

Ceravety Press & Cast

UNIVERSAL SPEED INVESTMENT FOR PRESSABLE CERAMICS AND CAST ALLOYS



Accuracy of fit has never been so easy to achieve

Ceravety Press & Cast sets new standards in investment technology. It can be used as a speed investment for pressing / press-over and casting procedures, and also for conventional overnight heating.

Thanks to its excellent expansion control, this investment ideally compensates for the shrinkage of pressed and cast objects. In this way, it creates very smooth surfaces with outstanding constant fit.

Ceravety Press & Cast ensures easy and gentle divestment, minimising the stress for objects with low wall thicknesses.

*Restoration and photos by German Bär,
St. Augustin, Germany*



Ceravety Press & Cast offers even more

- Suitability for all pressing pellets (high and low melting)
- Thin reaction layers on lithium disilicate
- Outstanding expansion control
- Excellent compensation for the shrinkage of non-precious and precious alloys
- Graphite-free material
- Long working time
- Accuracy of fit

Reliable and efficient – any time



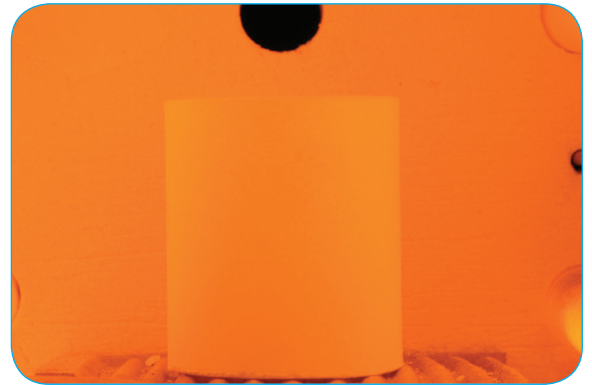
Long working time – accurate reproduction

Up to 6 minutes is sufficient time to fill several muffles in one step. The creamy consistency of the investment ensures accurate reproduction of the objects.

Speed or conventional preheating? The choice is yours

After a setting time of less than 25 minutes, you can heat the muffles in the speed technique or use the conventional preheating method.

The optimised interplay of setting expansion and thermal expansion provides excellent detail reproduction in both heating techniques.



Efficient and gentle divestment

Ceravety Press & Cast allows you to use the lowest blasting pressure for divestment, compared to conventional speed investments, and minimise the stress acting on pressed objects. Nevertheless, divestment time is reduced by almost 50 percent.

Thin reaction layers on lithium disilicate

The thermal conductivity of the investment is matched to lithium disilicate so that reaction layers on pressed objects are very thin. Gentle divestment of the objects, high detail reproduction at the margins, and smooth surfaces ensure a remarkable accuracy of fit immediately after sandblasting.



Ceravety Press & Cast users are impressed



Quality is paramount in our company. And SHOFU Ceravety Press & Cast investment perfectly fulfills our requirements, thanks to its easy handling and remarkable versatility.

The accuracy of fit of the restorations and the high detail reproduction and smoothness of their surfaces set new standards, especially in the use of lithium disilicate ceramics.

Ceravety has allowed us to achieve a new level of quality in our fabrication processes, and I can unreservedly recommend this product to anyone.
(Bernd Egger, ZTM)



SHOFU's new Ceravety investment fully satisfied me the very first time I tried it.

The product is highly accurate, suitable for multiple indications and greatly reduces the reaction layer when pressing lithium disilicate ceramics. It ensures smooth surfaces and absolute precision and saves a lot of time during the divestment and trying-in of the restorations.

Ceravety is more than just another investment. For me, it is a time-saving "divestment".

(German Bär, ZTM)

System components



CERAVETY PRESS & CAST

- Powder: 120 x 100 g (PN 6966)
- Powder: 30 x 100 g (PN 6968)
- Liquid: 2000 ml (PN 6967)
- Liquid: 300 ml (PN 6969)



SHOFU INC. 11 Kamitakamatsu-cho, Fukuine, Higashiyama-ku, Kyoto 605-0983, Japan (www.shofu.co.jp)
SHOFU DENTAL ASIA-PACIFIC PTE. LTD. 10 Science Park Road, #03-12 The Alpha, Science Park II, Singapore 117684 (www.shofu.com.sg)
SHOFU DENTAL TRADING (SHANGHAI) CO., LTD. No. 645 Jiye Road, Sheshan Industrial Park, Songjiang, Shanghai 201602, China (www.shofu.com.cn)
SHOFU DENTAL CORPORATION 1225 Stone Drive, San Marcos, CA 92078-4059, USA (www.shofu.com)
SHOFU UK Riverside House, River Lawn Road, Tonbridge, Kent, TN9 1EP, UK (www.shofu.co.uk)
SHOFU DENTAL GmbH Am Brüll 17, 40878 Ratingen, Germany (www.shofu.de)

SHOFU is a registered trademark of SHOFU INC. All other trademarks and registered trademarks are the property of their respective holders. SHOFU INC. reserves the right to change specifications without notice.



www.shofu.de