

BeutiSealant

Self Etching Fluoride Releasing
Pit & Fissure Sealant



Official Partner



Minimally Invasive
Cosmetic Dentistry



BeutiSealant

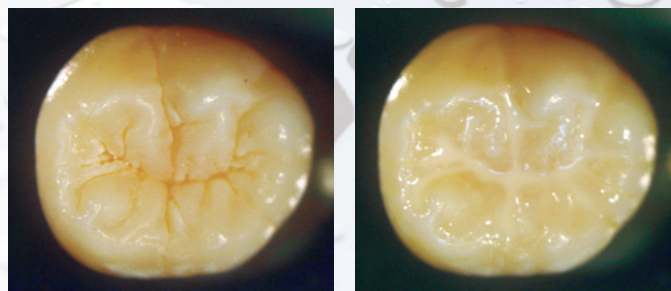
For decades, dentists and hygienists have had no alternative but to use phosphoric acid etching as "a necessary evil" to improve the bondability of dental sealants. In doing so, they have not only lost countless hours to these laborious steps, but also have inevitably destroyed otherwise healthy tooth structure with the damaging effects of harsh acids.

Driven by modern concepts of Minimally Invasive Cosmetic Dentistry, and recent developments in adhesives technology, Shofu has created a faster, easier, and gentler sealant system that eliminates the need for phosphoric acid etch and rinse steps entirely, while still maintaining equal or better shear bond strengths. Moreover, the unique Surface Pre-Reacted Glass (S-PRG) filler particles have been shown to assist in the remineralisation process.

- Ideal handling and viscosity; eliminate voids with bubble-free consistency
- Radiopacity equal to dentine: 0.92 mm Al
- Unique cariostatic properties of S-PRG fillers
- High shear bond strength without phosphoric acid etch or rinse required
- Four easy steps; 30 second application

Gentle on Enamel

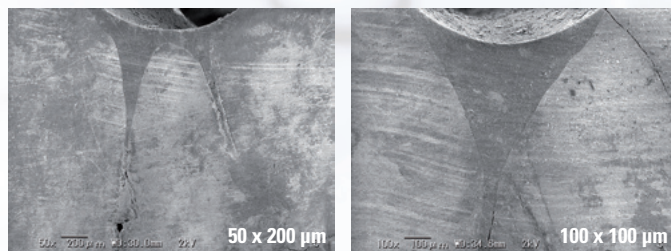
BeutiSealant Primer contains dual adhesive monomers that thoroughly penetrate and prepare pits and fissures for bonding to the sealant. Unlike traditional sealants which require phosphoric acid etching, demineralising and dehydrating healthy teeth, Shofu's self-etching primer is significantly less acidic helping to preserve healthy tooth structure.



Photos courtesy of Dr. Satoshi Fukumoto, Tohoku University, Japan

BeutiSealant is an easy to apply sealant optimised for smooth, bubble-free consistency. Achieve precise delivery without the common issue of overfilling with our specially designed no-ooze syringe, and a tiny 27 gauge needle tip.

SEM photos of deep penetration into fissures



Photos courtesy of Dr. Satoshi Fukumoto, Tohoku University, Japan

Four easy steps



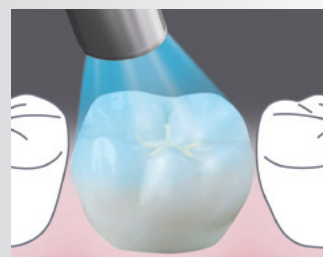
1 Apply primer to clean tooth and leave for 5 seconds



2 Gently air dry for 5 seconds

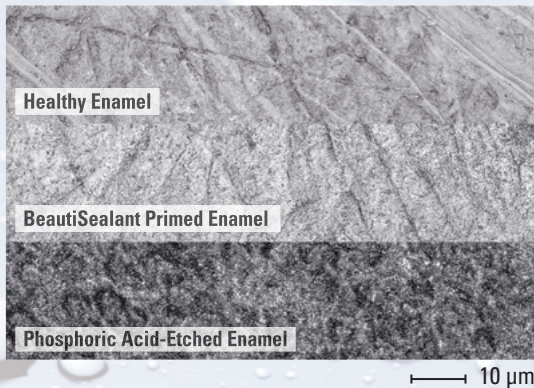


3 Apply paste

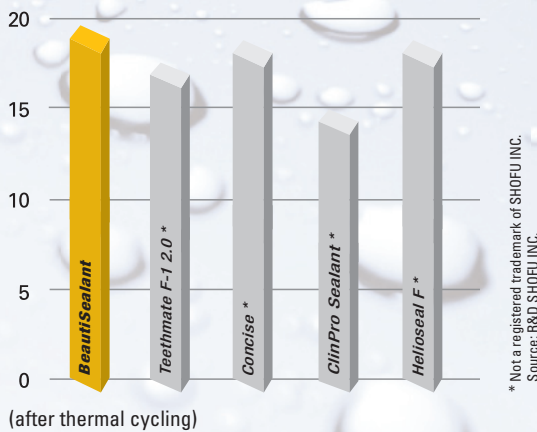


4 Light cure with a halogen (20 seconds) or LED (10 seconds) curing light

No Acid Etch



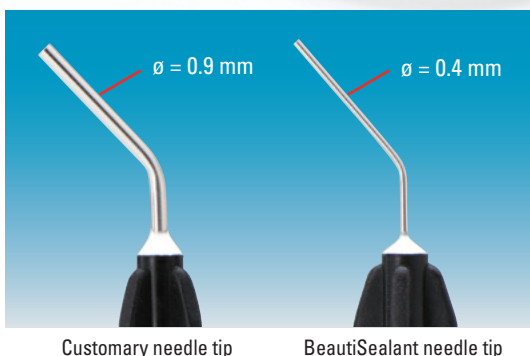
Shear Bond Strength to Enamel (MPa)



Despite the lack of etch-and-rinse technique, shear bond strengths remain at levels that meet or exceed market leading sealants at 19.5 MPa.

Tiny needle tip for fissure sealing

The only 0.4 mm wide needle tip allows precise control and dosage of the paste. The usual overfilling is largely avoided.

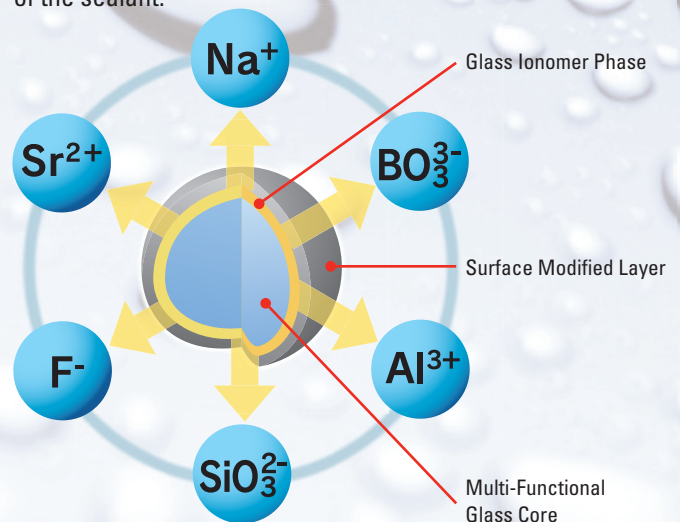


A Giomer

refers to any product containing Shofu's proprietary Surface Pre-Reacted Glass, or S-PRG filler particles. S-PRG filler uniquely releases six ions: Fluoride, Sodium, Strontium, Aluminum, Silicate, Borate, all with known bioactive

properties. Unlike glass ionomers and compomers which require water absorption following photocure to release fluoride; Gomers contain a multifunctional glass core that undergoes an acid-base reaction during manufacturing and is subsequently protected by a surface modified layer.

This trilaminar structure forms a type of stable glass ionomer which allows ion release and recharge to take place, while protecting the glass core from the damaging effects of moisture, greatly improving long-term durability. With its unique Giomer chemistry, BeautiSealant is therefore able to recharge its fluoride ions from household dental hygiene products such as toothpaste, providing sustained remineralisation benefits to adjacent tooth structure over the life of the sealant.



Key Features of Giomer Materials

S-PRG filler material has been clinically shown to:

- Recharge fluoride when treated with fluoridated products
- Decrease acid production of cariogenic bacteria
- Neutralise acid on contact
- Slow demineralisation, while promoting remineralisation of enamel
- Demonstrate an anti-plaque effect

Order Information



BeautiSealant

- BeautiSealant Paste 1.2 g
- BeautiSealant Primer 3 ml
- 5 Needle Tips
- 50 Microbrush Fine (pink)
- 25 V-Dish
- Directions for Use

PN 1798

BeautiSealant Paste 1.2 g

PN 1799

BeautiSealant Primer 3 ml

PN 1800

Prophylaxis Pastes



Merssage Regular

contains fluoride, RDA 170-180
mint flavour, tube of 40 g

PN 0572



Merssage Plus

contains fluoride, RDA < 10
orange flavour, tube of 38 g

PN 0575



Merssage Fine

contains fluoride, RDA 40-50
lemon flavour, tube of 40 g

PN 0573



Pressage

non-fluoride, RDA 170-180
tasteless, tube of 40 g

PN 0574



SHOFU INC. 11 Kamitakamatsu-cho, Fukuine, Higashiyama-ku, Kyoto 605-0983, Japan (www.shofu.co.jp)
 SHOFU INC. Singapore Branch 10 Science Park Road, #03-12 The Alpha, Science Park II, Singapore 117684 (www.shofu.com.sg)
 SHOFU DENTAL TRADING (SHANGHAI) CO., LTD. No. 645 Jiye Road, Sheshan Industrial Park, Songjiang, Shanghai 201602, China (www.shofu.com.cn)
 SHOFU DENTAL CORPORATION 1225 Stone Drive, San Marcos, CA 92078-4059, USA (www.shofu.com)
 SHOFU UK Riverside House, River Lawn Road, Tonbridge, Kent, TN9 1EP, UK (www.shofu.co.uk)
 SHOFU DENTAL GmbH [EC REP] Am Brüll 17, 40878 Ratingen, Germany (www.shofu.de)
 SHOFU is a registered trademark of SHOFU INC. All other trademarks and registered trademarks are the property of their respective holders. SHOFU INC. reserves the right to change specifications without notice.