

BeutiBond

LIGHT-CURING, SELF-ETCHING
ONE-COMPONENT ADHESIVE



ONE COMPONENT – ONE LAYER ...

BeutiBond is an innovative “all in one” adhesive of the 7th generation, for the restoration of natural enamel and dentine and offers high initial and long-term stable bonding.

Etch, prime and bond reliably with one component only and with one single application. No need for laborious procedures such as shaking or mixing anymore. You will obtain a reliable and reproducible result.

Moreover, postoperative sensitivities or white discolourations of the gingiva are virtually excluded thanks to the unique chemistry of BeutiBond.

The extremely low film thickness leaves plenty of space for highly aesthetic restorations, even in the case of small or shallow cavities.

7th GENERATION

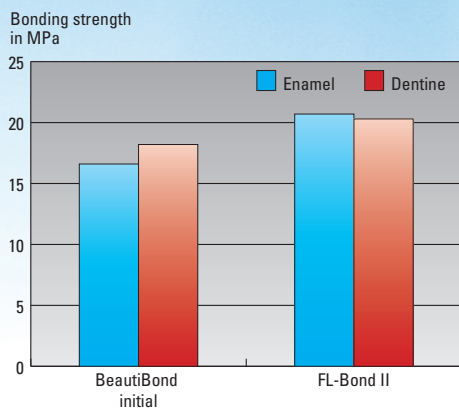
Top bonding strength

Excellent bonding to enamel and to dentine due to two specially developed monomers. The strength matches that of two-step systems.

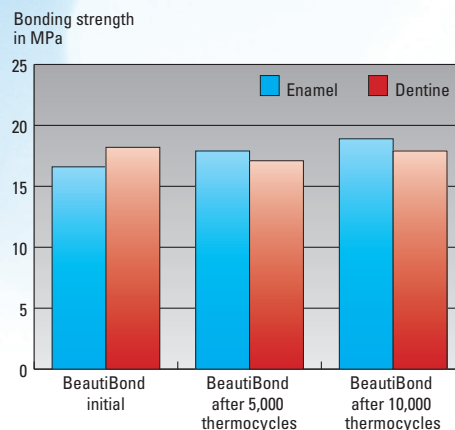
Permanently stable

The absence of hydrolysis-sensitive HEMA prevents ageing caused by hydrolysis and guarantees permanently strong and safe bonding.

Initial bond strength after 24 h



Permanent bond strength



Source: Internal data by SHOFU INC., Japan

... SIMPLE, FAST, SAFE

Enamel and dentine conditioning with one component only

For more complex restorations in particular, obviating unnecessary and technically sensitive procedures provides additional safety. Moreover, the resulting thin bonding layer creates ideal conditions for an invisible margin of the restoration.



Application of BeautiBond, drying and light curing. Pay attention to sufficient air drying.



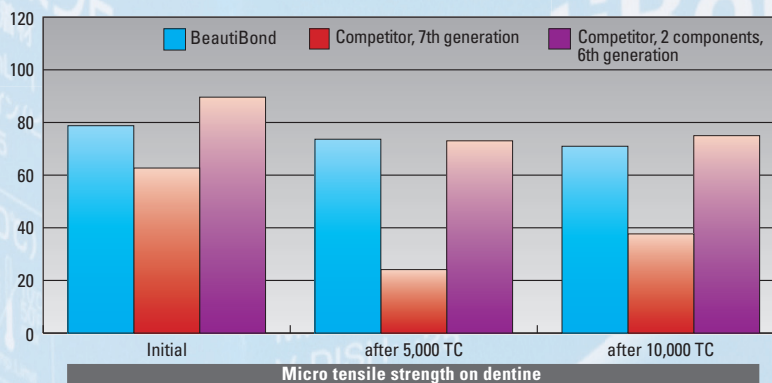
Stabilisation of the surface using BEAUTIFIL Flow F10 (A3.5) and build-up with BEAUTIFIL II (A3.5+Inc). Thanks to the thin bonding layer, no margin is visible.

Clinical photographs by courtesy of Dr. Kanamura

External studies on BeautiBond

At the "3rd Congress on Adhesive Dentistry 2008", Prof. Sano and Dr. Kawamoto from Hokkaido University, Japan, presented a comparative study of the micro tensile bond strength of BeautiBond including ageing simulations with competing products of the 6th and 7th generation. Compared to the two-component products of the 6th and 7th generation, there was no decrease in performance. Interestingly, however, a significantly superior bonding of BeautiBond to dentine after thermal cycling was discovered when compared to the competitor's one-component product with similarly simplified handling.

Bonding strength in MPa

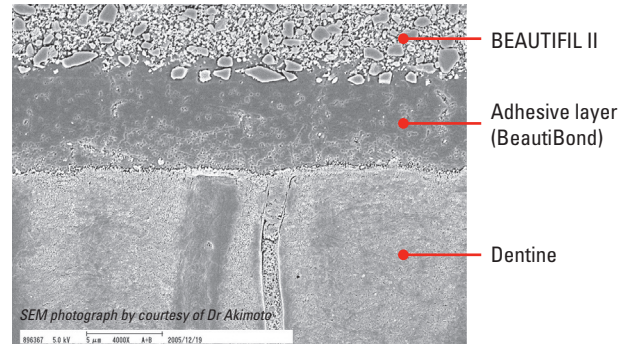


Source: "Micro-tensile bond strength of one-/two-step self-etching adhesives using Novel thermal cycling method"

KAWAMOTO Chiharu, NAGANO Futami, YASUMOTO Kei, SANO Hidehiko; Department of Restorative Dentistry, Division of Oral Health Science, Graduate School of Dental Medicine, Hokkaido University, Sapporo, JAPAN The Third International Congress on Adhesive Dentistry 2008 Xian China

Thin bonding layer

With a very thin bonding layer of around 5 μm , there is plenty of space for composite filling, thereby permitting aesthetic solutions for flat or shallow cavities in the context of minimally invasive therapy.

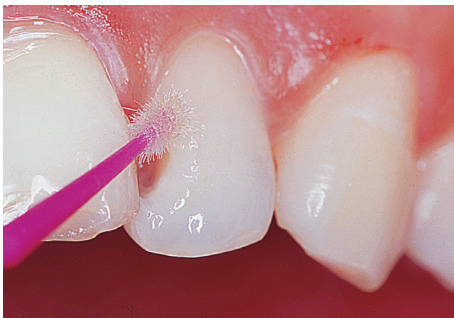


30 sec. after argon ion etching

Aesthetic basis even with flat and shallow restorations



Conservative tooth preparation before application of one-component adhesive BeutiBond



Application of BeutiBond, drying and light curing. The thin bonding layer leaves sufficient space for an aesthetic restoration of the small cavity.



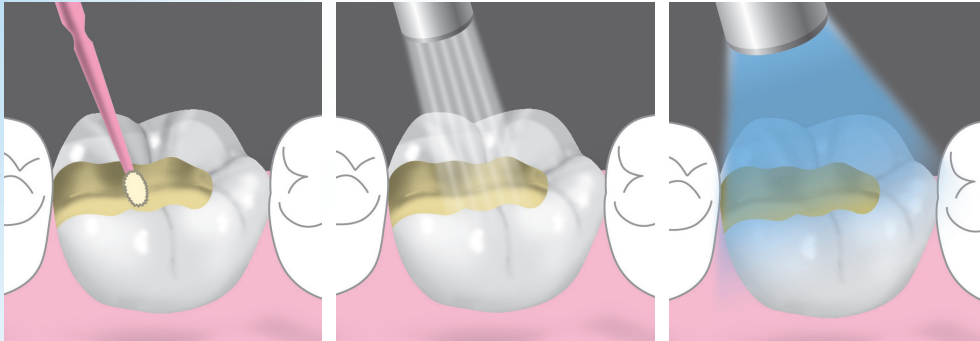
Excellent result with invisible margin in combination with BEAUTIFIL II

Clinical photographs by courtesy of Dr Miyazaki

... SIMPLE, FAST, SAFE

Simply safe

The absence of laborious and technically sensitive procedures guarantees bonding to be both fast and simple. Start with the build-up of your filling in less than 30 seconds.



1. Apply BeautiBond and leave it for 10 sec

2. Air-dry carefully for 3 sec, then air-blow for 2 sec at high pressure in order to thoroughly evaporate water and volatile components

3. Light-cure (halogen: 10 sec, LED: 5 sec.)

Optimized restoration basis

The restoration of shallow lesions close to the gingiva is associated with various difficulties. Here it is advantageous to have a reliable adhesive with high bonding strength to dentine at hand. This is what BeautiBond offers and it also avoids irritations of the surrounding gingival margin. After the curing of the bonding layer, BeautiBond facilitates further procedures by an optimized bonding of the composite layer which will be created.



In wedge-shaped defects, experience shows the handling of the restorative materials to be difficult. Therefore, the cured bonding layer ought to facilitate the build up of the composite.

Thus even shallow lesions can be repaired easily

Completed restoration with BEAUTIFIL II

Order information



BeutiBond

- BeutiBond 6 ml (bottle)
- Microtip Fine
(1 handle, 50 application tips)
- Dish, 25 pcs.

PN 1781



BeutiBond - Unit Dose

- BeutiBond 0.1 ml (Unit Dose), 50 pcs.
- MicroBrush Fine, 50 pcs.

PN 1782



BEAUTIFIL II

Fluoride releasing composite syringes 4.5 g each and tips 0.25 g each in the shades A1, A2, A3, A3.5, A4, B1, B2, B3, C2, C3, Incisal, Bleaching White, A20, A30



BEAUTIFIL Flow F02

Fluoride releasing viscous composite, syringes with 2 g each in the shades A1, A2, A3, A3.5, A4, A30, G (Gum)



BEAUTIFIL Flow F10

Fluoride releasing easy-flowing composite, syringes with 2 g each in the shades A1, A2, A3, A3.5, A4, A30, A3T



BEAUTIFIL Opaquer

Fluoride releasing flowable, highly opaque composite, syringes with 2 g each in the shades UO (Universal Opaque) und LO (Light Opaque)



SHOFU INC. 11 Kamitakamatsu-cho, Fukuine, Higashiyama-ku, Kyoto 605 - 0983, Japan (www.shofu.co.jp)
 SHOFU INC. Singapore Branch 10 Science Park Road, #03-12 The Alpha, Science Park II, Singapore 117684 (www.shofu.com.sg)
 SHOFU DENTAL SUPPLIES (SHANGHAI) CO. LTD. No. 645 Jiye Road, Sheshan Industry Park, Songjiang 201602, Shanghai, China (www.shofu.com.cn)
 SHOFU DENTAL CORPORATION 1225 Stone Drive, San Marcos, CA 92078-4059, USA (www.shofu.com)
 SHOFU DENTAL PRODUCTS LTD. Dukas Factory, Chiddingstone Causeway, Tonbridge, Kent, TN11 8JU, UK (www.shofu.de)
 SHOFU DENTAL GmbH [EC REP] Am Brüll 17, 40878 Ratingen, Germany (www.shofu.de)
 SHOFU is a registered trademark of SHOFU INC. All other trademarks and registered trademarks are the property of their respective holders. SHOFU INC. reserves the right to change specifications without notice.
 © Copyright 2001 SHOFU INC. All rights reserved.