

→ MECTRON SINUS PHYSIOLIFT®

SINUS LIFT TECHNIQUE

CRESTAL APPROACH –

SAFE, SIMPLE AND FAST

mectron s.p.a., via Loreto 15/A, 16042 Carasco (Ge), Italia, tel +39 0185 35361, fax +39 0185 351374, www.mectron.com, mectron@mectron.com

SINUS PHYSIOLIFT®



→ NEW INSERT



PIEZOSURGERY®

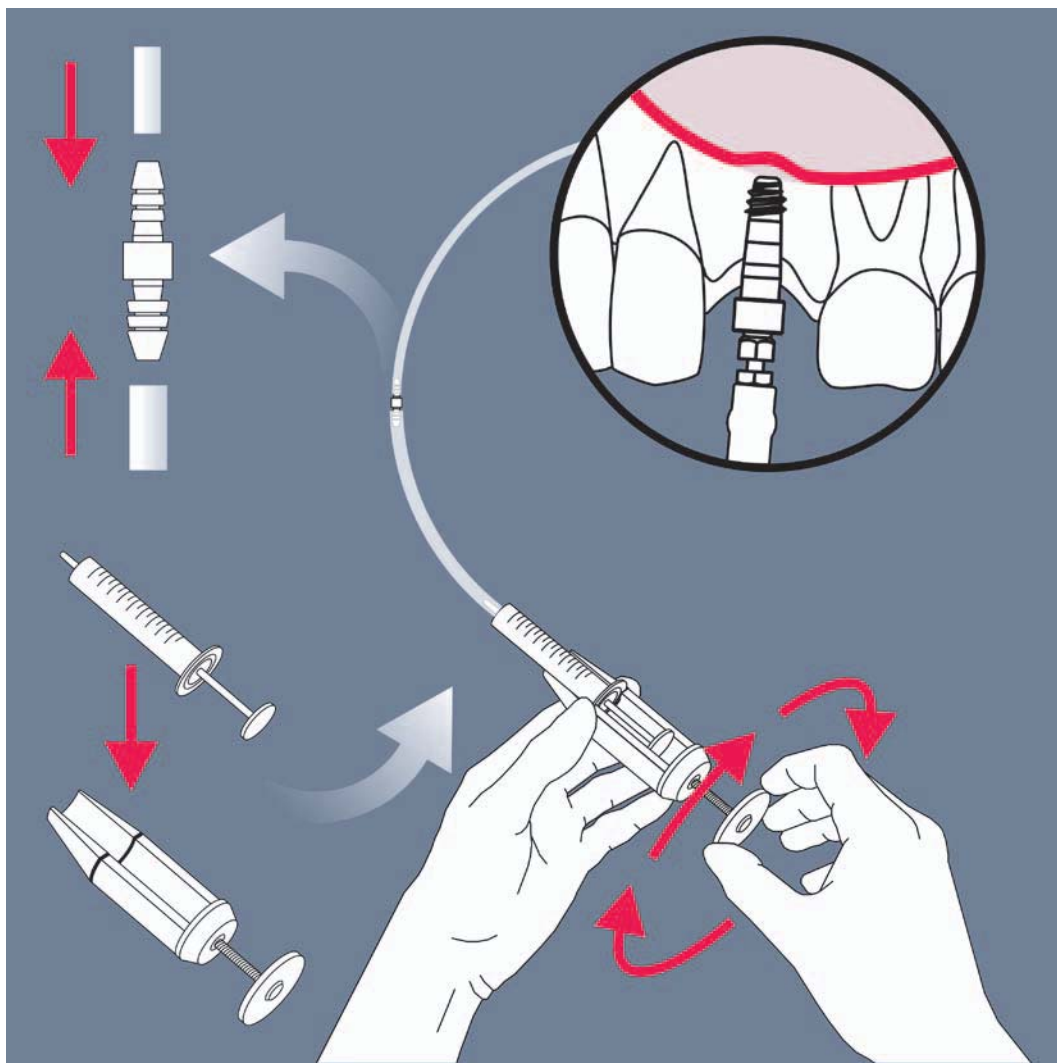
mectron

medical technology

..... SINUS PHYSIOLIFT®

CONTROLS PRESSURE IN THE SINUS CAVITY!

- Elevation of the sinus membrane with micrometric precision by means of hydrodynamic pressure
- Watertight sinus elevator for hydrodynamic sinus lift
- Atraumatic technique not requiring the use of hammer and osteotome
- Implant site preparation using PIEZOSURGERY® – the sinus basal cortex is removed with minimal risk of perforating the Schneiderian membrane
- Multiple implant placement can be performed
- A flapless procedure can be performed in some cases



After preparation of the site with PIEZOSURGERY®, the CS1 elevator is introduced, and the tube connected to a syringe containing 3 ml of physiological saline solution is then inserted in the CS1. With the Sinus Physiolift® protocol, it is possible to elevate the Schneiderian membrane safely, controlling the pressure of the liquid by means of the attached Physiolifter device.

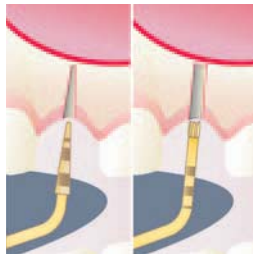
mectron

medical technology

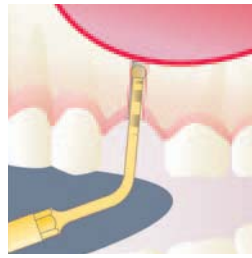
→ SINGLE IMPLANT SINUS LIFT



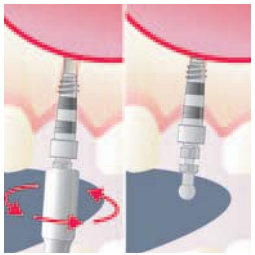
1 Incision



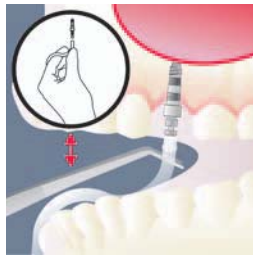
2 Preparation for inserting the elevator



3 Removal of the basal cortex



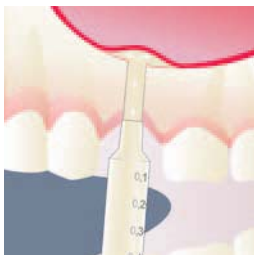
4 Insertion of the CS1 elevator



5 Attachment of Physiolifter



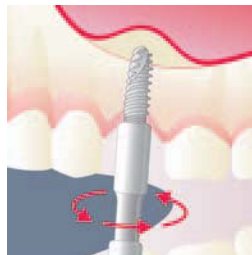
6 Elevation of the Schneiderian membrane



7 The actual lift

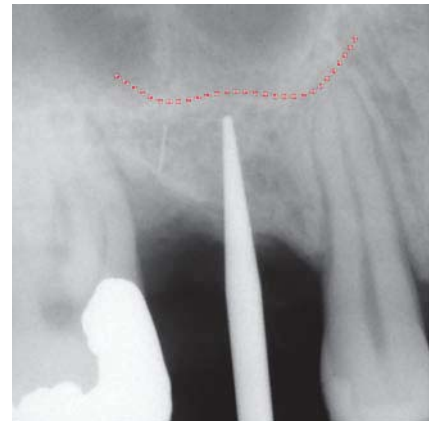


8 Removal of graft material from implant site

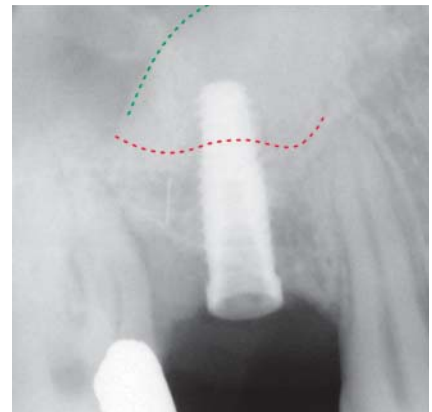


9 Implant placement

→ BEFORE

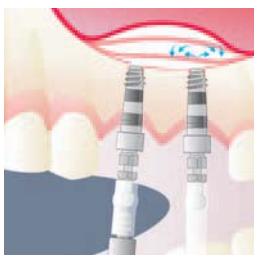


→ AFTER

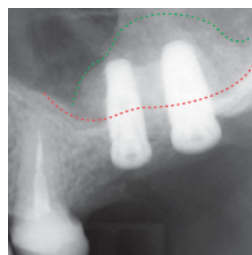
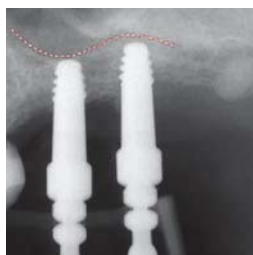


→ DR. ROSARIO SENTINERI TECHNIQUE

→ MULTIPLE IMPLANT SINUS LIFT

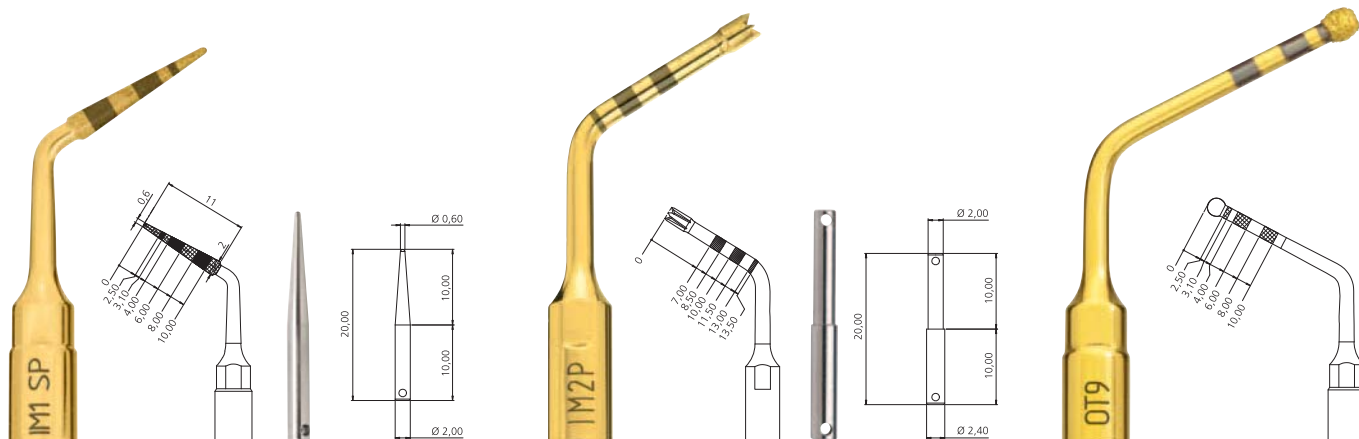


Insertion of the second CS1 elevator



Implant placement

MECTRON SINUS PHYSIOLIFT® KITS



→ SINUS PHYSIOLIFT® PRO KIT

Consisting of:

- PIEZOSURGERY® inserts: IM1 SP, IM2P, OT9
- Alignment pins: PIN IM1, PIN 2-2.4
- 2 crestal sinus elevators CS1
- Pressure control system: Physiolifter
- Micromotor and ratchet adapters: ADM10, ADR10
- Ratchet
- 3 silicone tubes with tube-tube connector
- 2 complete sealed tubes
- 3 sterile disposable syringes
- 2 insert trays

→ SINUS PHYSIOLIFT® BASIC KIT

Consisting of:

- 2 crestal sinus elevators CS1
- Pressure control system: Physiolifter
- Micromotor and ratchet adapters: ADM10, ADR10
- Ratchet
- 3 silicone tubes with tube-tube connector
- 2 complete sealed tubes
- 3 sterile disposable syringes
- 2 insert trays