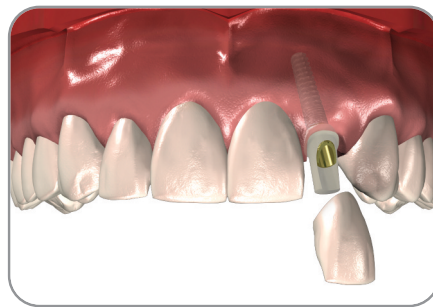


# Must Have Implants

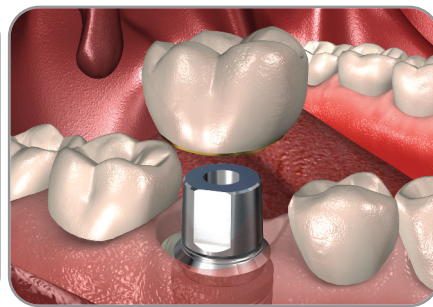
From Single Tooth Restoration  
To Overdentures and Teeth-in-1Day™



**Legacy™3**  
3.2mmD



Single Tooth Restoration  
with Legacy3 & Zirconia Abutment

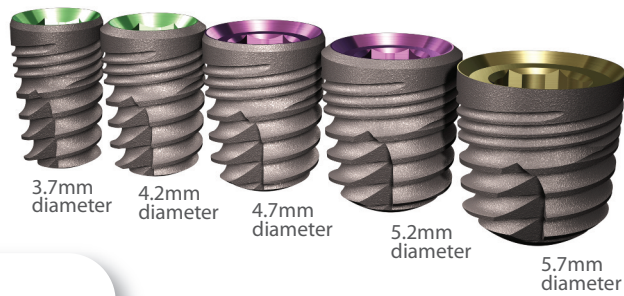


Immediate Molar Replacement  
with Legacy2 and Titanium Abutment



**Legacy™2**  
7.0mmD

**Legacy™3**  
6mmL



3.7mm diameter

4.2mm diameter

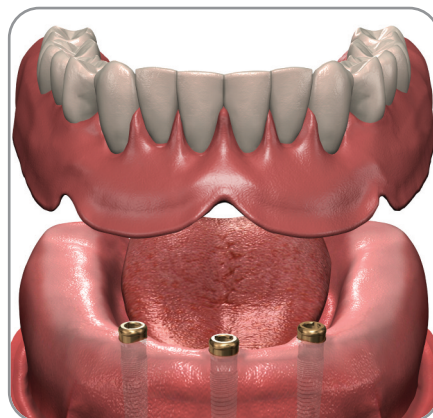
4.7mm diameter

5.2mm diameter

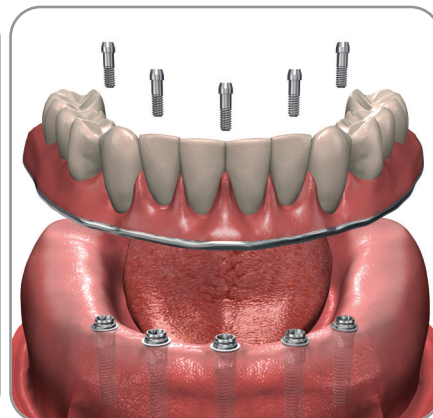
5.7mm diameter



**GoDirect™**  
3.0mmD



Implant-Retained Overdenture  
with GoDirect 1-Piece Implants



Implant-Supported Fixed Prosthesis  
with ScrewIndirect 1-Piece Implants



**ScrewIndirect®**  
3.0mmD

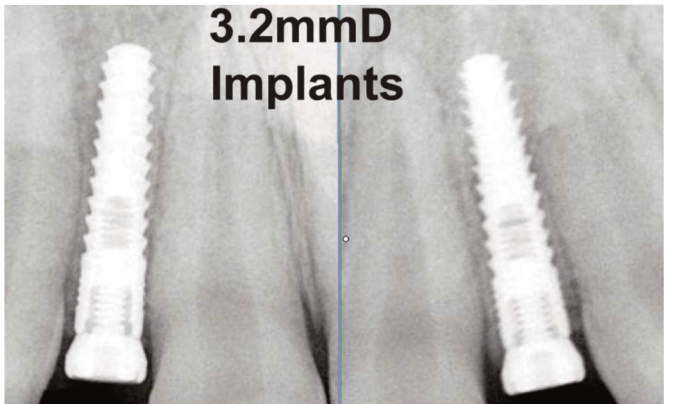
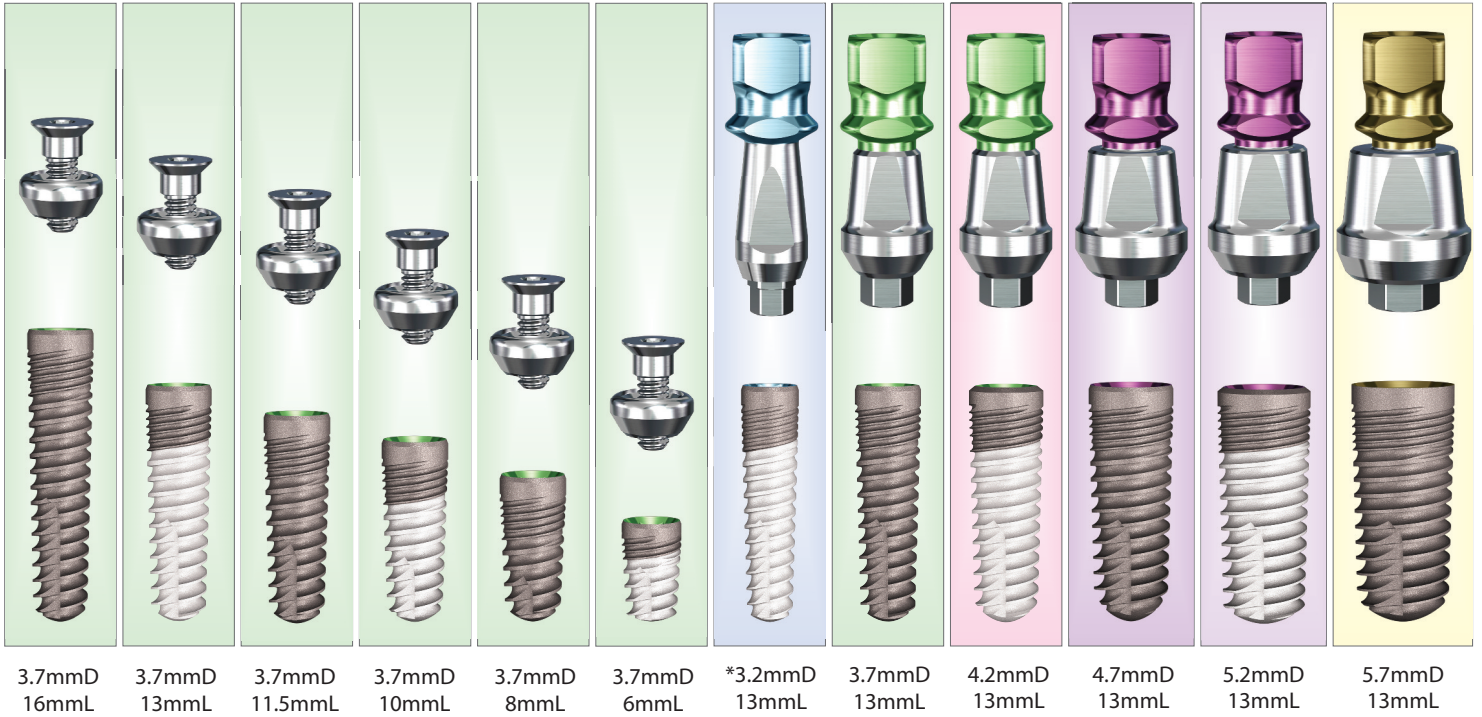
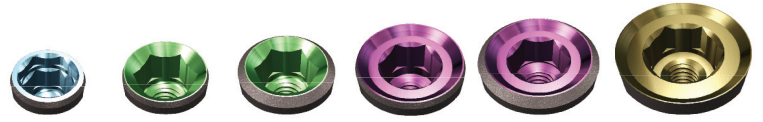
[www.implantdirect.com](http://www.implantdirect.com)

# Legacy3 Two-Stage Implant - SBM & HA

Surgical and Prosthetic Compatibility with Zimmer's Screw-Vent® Implants



\*3.2mmD not compatible

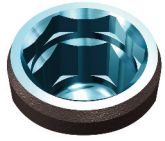




# Abutment Options Available for 3.2mmD Legacy

\*single tooth restorations

## 3.0mmD Platform



Fixture Mount

3.0mmD Platform



3.2mmD Implant



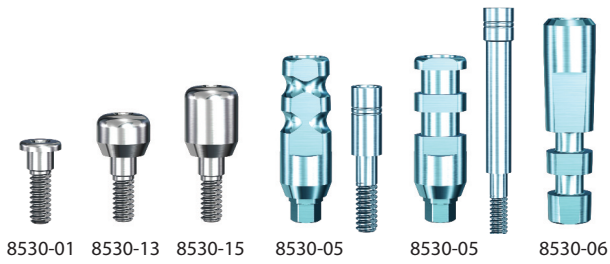
8530-31C  
8530-32C



8530-51-08C  
8530-52-08C



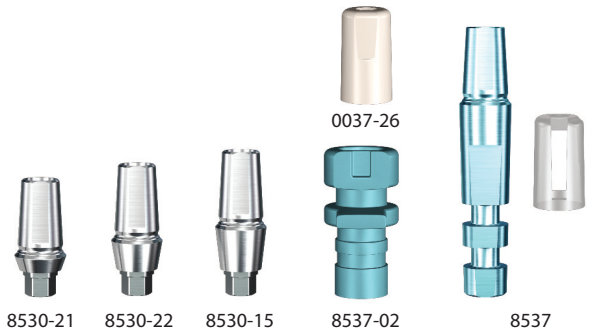
8530-51-15C  
8530-52-15C



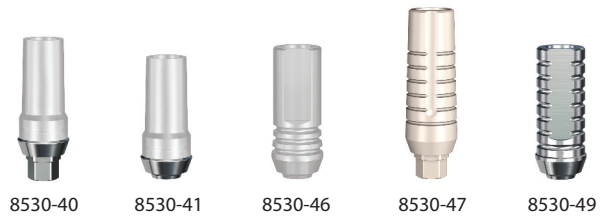
8530-01 8530-13 8530-15 8530-05 8530-05 8530-06



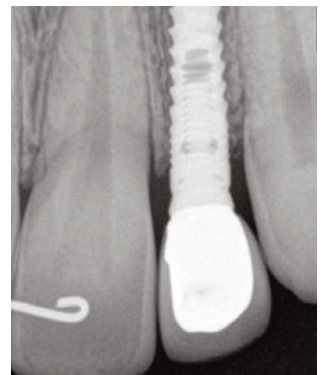
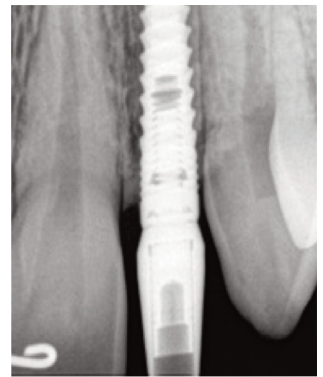
8530-31 8530-32 8530-51 8530-52



8530-21 8530-22 8530-15 0037-26 8537-02 8537



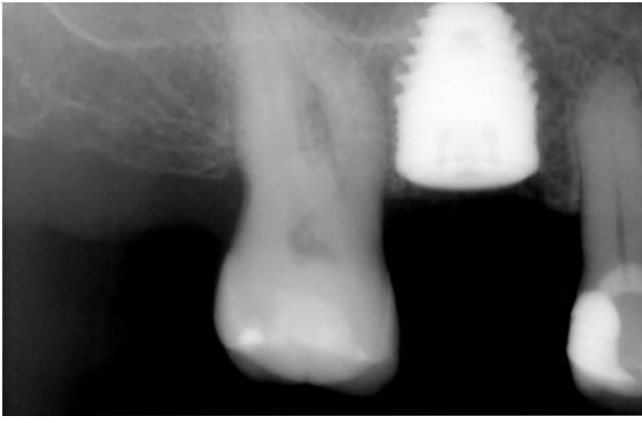
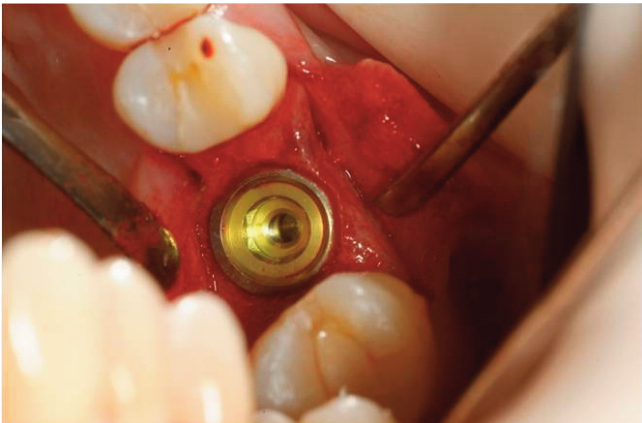
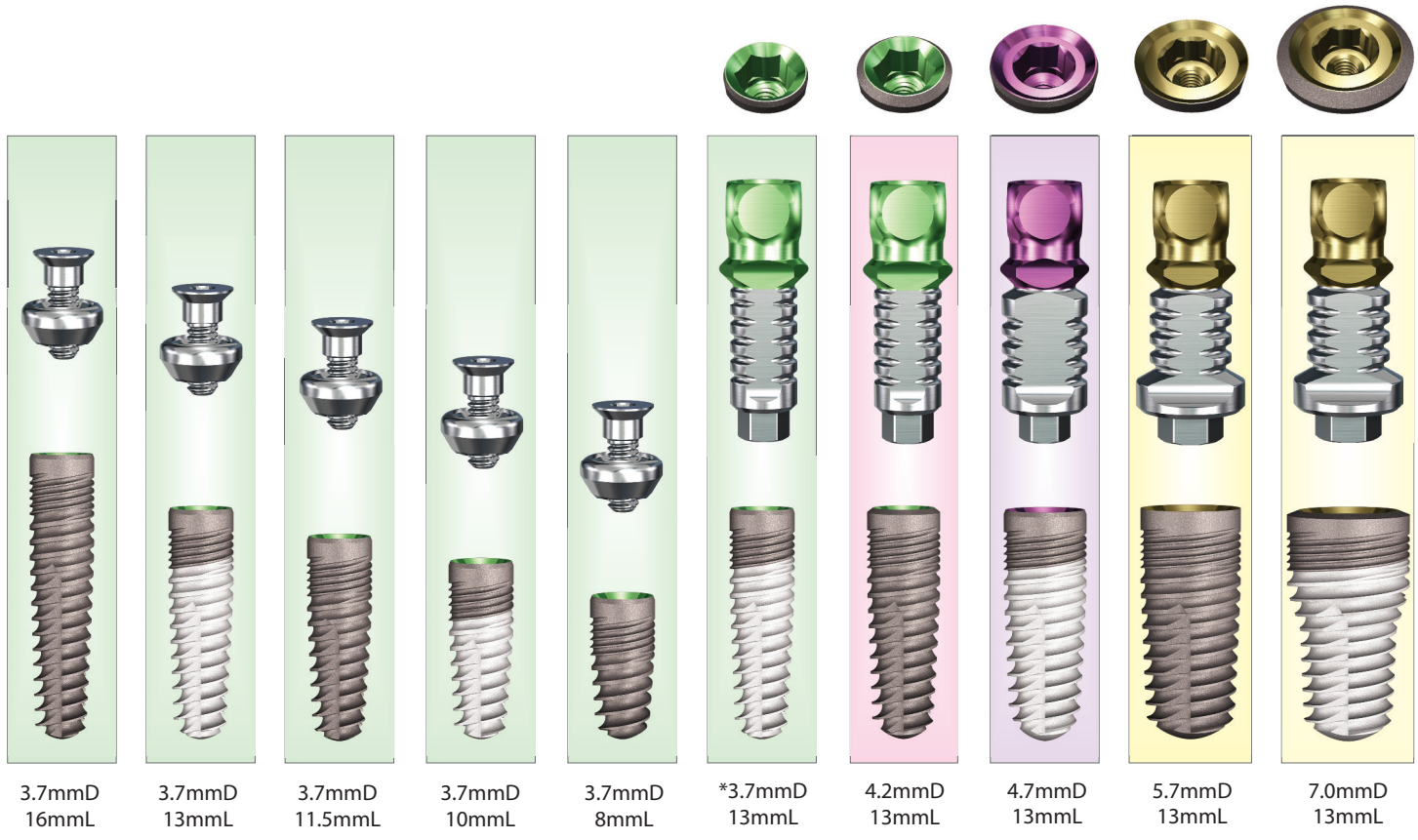
8530-40 8530-41 8530-46 8530-47 8530-49



# Legacy2 Two-Stage Implant - SBM & HA

Surgical and Prosthetic Compatibility with Zimmer's Screw-Vent® Implants

All-in-1 Packaging includes implants, titanium temporary abutment, transfers, healing collar & cover screw.



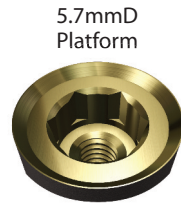


# Abutment Options Available for 7.0mmD Legacy 5.7mmD Platform

## 5.7mmD Platform



Fixture Mount



5.7mmD Platform

3.2mmD Implant



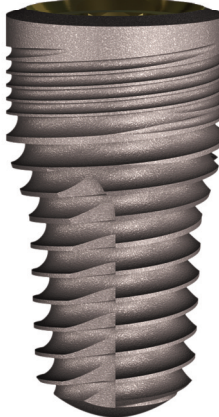
8057-31  
8057-32



8057-51  
8057-52



HLA5-6  
HLA5-7



8057-40



8057-44



8057-46



8057-47



8057-49



8057-01



8057-13



8057-15



8057-05



8057-08



8057-06



8057-21



8057-22



8057-23



3065-02



3065



3065



3065



8057-72



8057-74



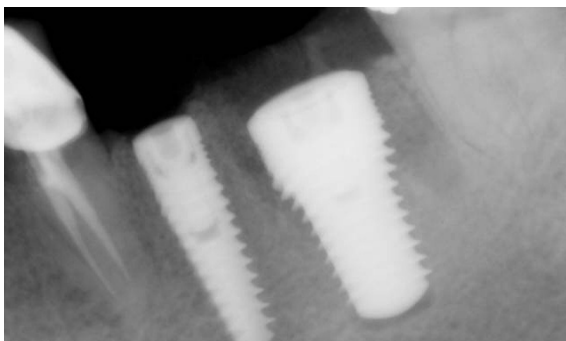
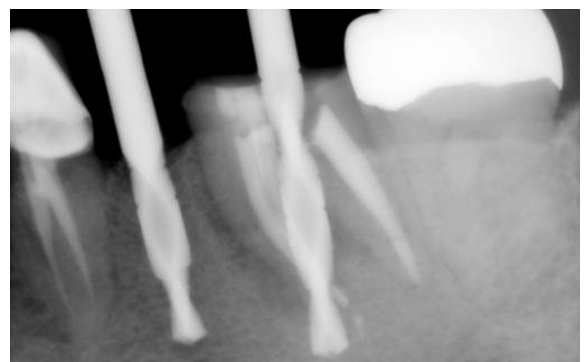
8057-61



8057-62



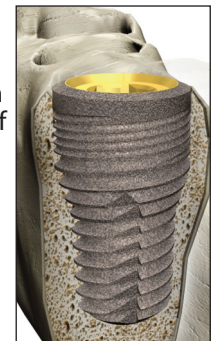
8057-64



## 7mmD x 13mmL

Tapered design with step-down in diameter allows placement of a longer implant

Micro-threads and self-tapping, progressively deeper body threads add to stability



# GoDirect™ One-Piece Implant

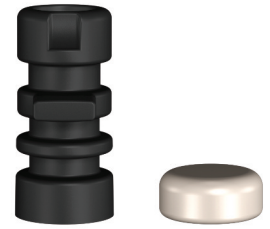
Implant Packaged with Snap-on Transfer and Snap-on Healing Cap



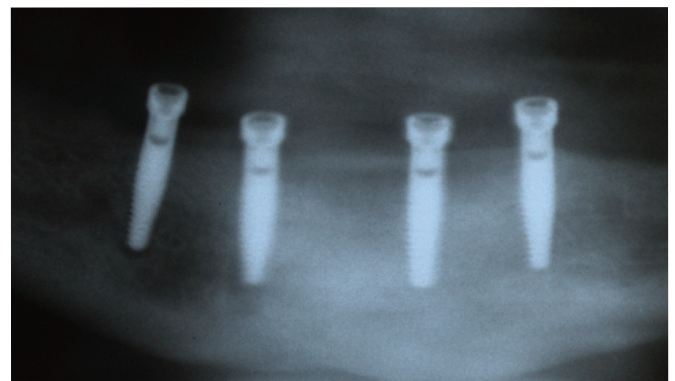
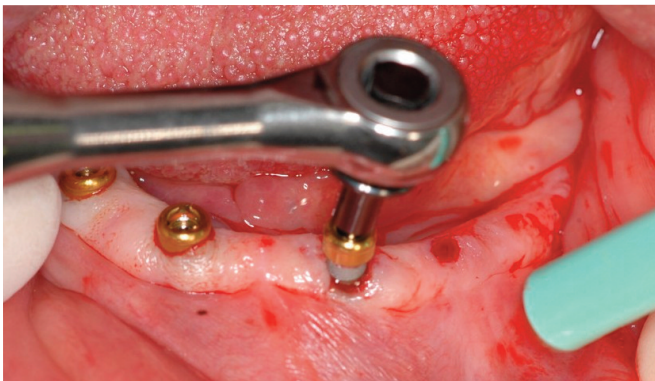
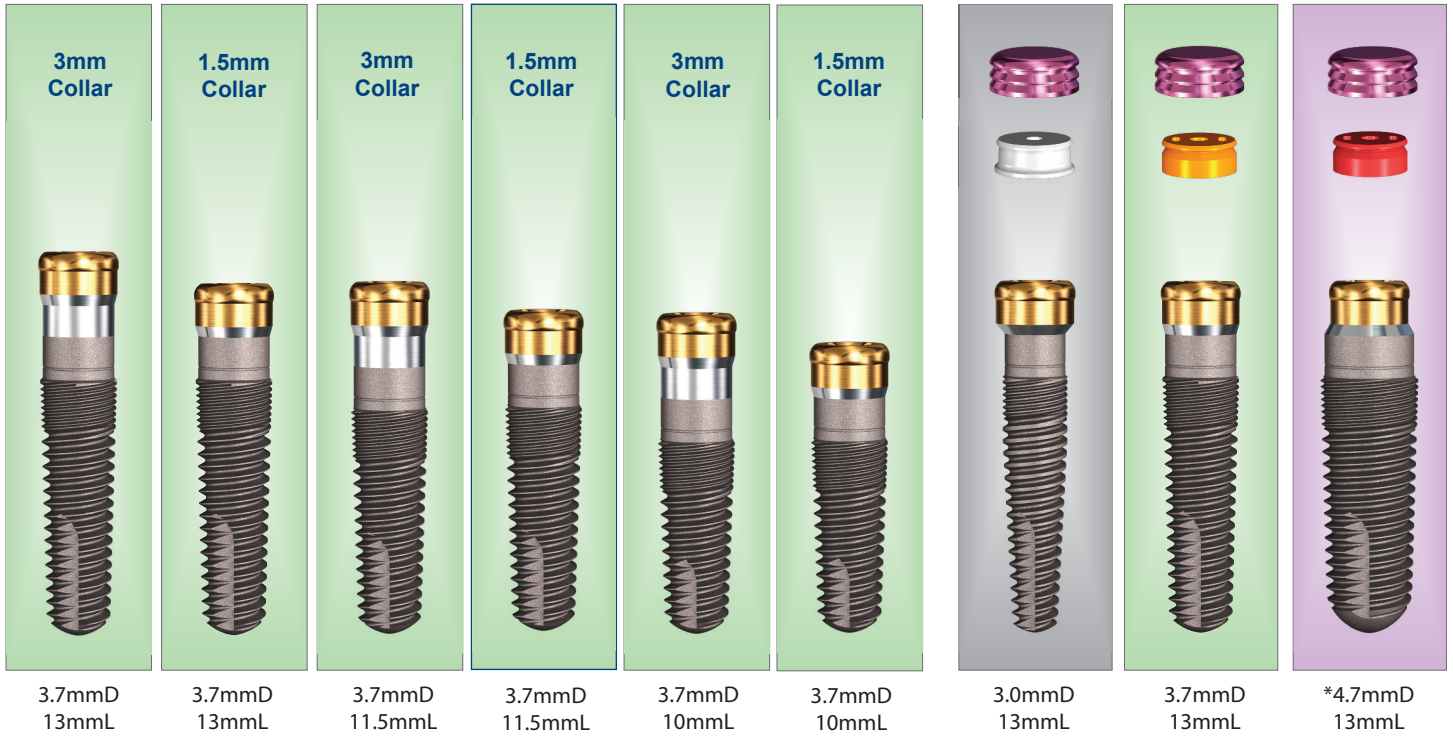
## Locator® Compatible Abutment Platform

(Locator® is a registered trademark of Zest Anchors Company. The GoDirect™ and GPS™ Systems are neither authorized, endorsed nor sponsored by Zest Anchors Company)

\*4.7mmD Only available in short height, 8mmL and 13mmL.



Transfer and Comfort Cap Included



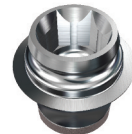


# ScrewIndirect® One-Piece Implant

Implant Packaged with 2mm Implant Extender, Snap-on Transfer and Snap-on Healing Cap



Gold Plastic



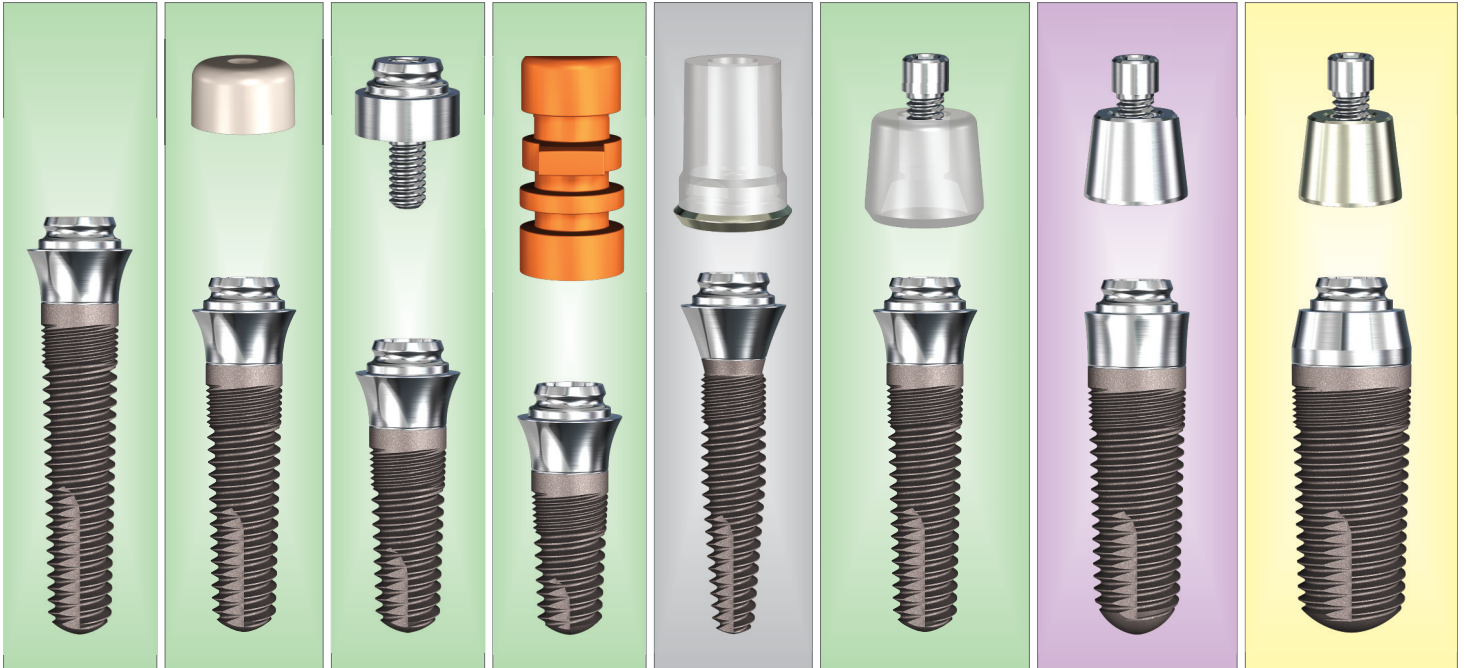
Plastic



Titanium



White Gold



3.7mmD  
16mmL

3.7mmD  
13mmL

3.7mmD  
10mmL

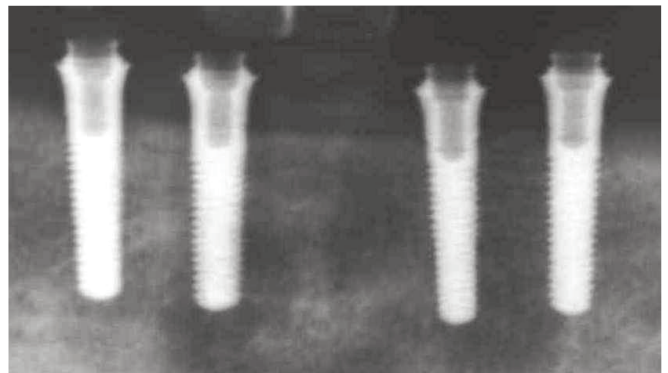
3.7mmD  
8mmL

3.0 mmD  
13mmL

3.7mmD  
13mmL

4.7mmD  
13mmL

5.7mmD  
13mmL



# Tired of Price Increases on Over-Priced Implants?

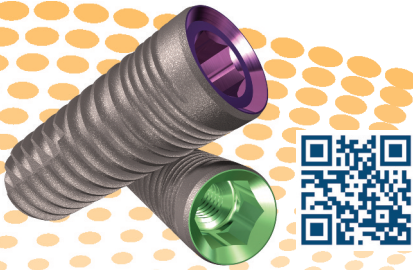


It's Time for a Reality Check. Choose Implant Direct for...  
Innovative Products. Great Value. Highest Customer Satisfaction<sup>1</sup>

## Legacy™3 Implant

All-in-1 Packaging includes implant, abutment, transfer, cover screw & healing collar  
\$175 vs \$621<sup>2</sup> from Zimmer Dental

✓ **Reality Check**  
Zimmer Customers  
Save \$446 with Legacy<sup>3</sup>



## SwishPlant™ Implant

All-in-1 Packaging includes implant, straight abutment/transfer, cover screw & healing collar  
\$200 vs \$705<sup>3</sup> from Straumann®

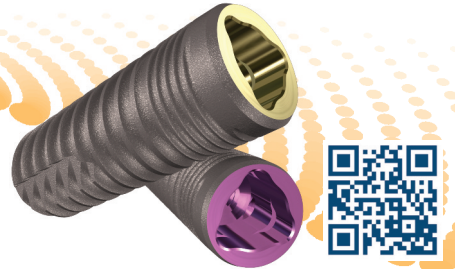
✓ **Reality Check**  
Straumann Customers  
Save \$505 with SwishPlant



## ReActive™ Implant

All-in-1 Packaging includes implant, abutment, transfer & cover screw  
\$200 vs \$694<sup>4</sup> from Nobel Biocare™

✓ **Reality Check**  
Nobel Customers  
Save \$494 with ReActive



## Implant Direct's New Las Vegas Training Center

Implant Direct offers an extensive list of educational opportunities at its Las Vegas Training Center with computers at each desk for Image Guided Surgical Training, models/mannequins for hands-on training and a four chair dental office for live surgical demonstrations.

For information on courses and dates, both in Las Vegas and throughout the US, visit Implant Direct's website or use your smart phone to link directly to our Educational Section.



**EARN 2 CE CREDITS FREE:** View Online Lecture with 3D Graphic Videos & Answer 13 Test Questions



## The Changing Reality of Implant Dentistry

Presented by Dr. Gerald Niznick  
Technological advances and economic factors have shifted the implant industry toward affordable care.

Price comparisons based upon US list prices as of February 2012. All trademarks are property of their respective companies.  
<sup>1</sup>Satisfied among Current and Former Users, by Company US Q211 Millenium Research Group A Decision Research, Inc. Company  
<sup>2</sup>US list price for Tapered Screw-Vent with micro grooves, healing collar & straight abutment  
<sup>3</sup>US list price for SLActive Tapered Effect implant, closure screw, healing abutment, solid abutment, transfer and comfort cap.  
<sup>4</sup>US list price for NobelActive with cover screw, impression coping & abutment. Live surgical demonstrations not available at all courses.



Approved PACE Program Provider FAGD/MAGD  
Credit Approval does not imply acceptance  
by a state or provincial board of dentistry or  
AGD endorsement  
8/1/2012 to 7/31/2015  
Provider ID# 316714