

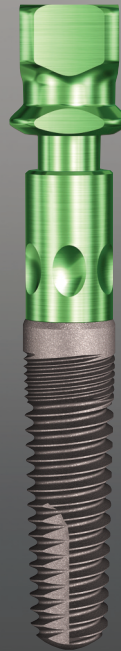


Legacy™ System Catalog



Legacy2

Legacy1



Legacy2



Legacy3



Legacy4





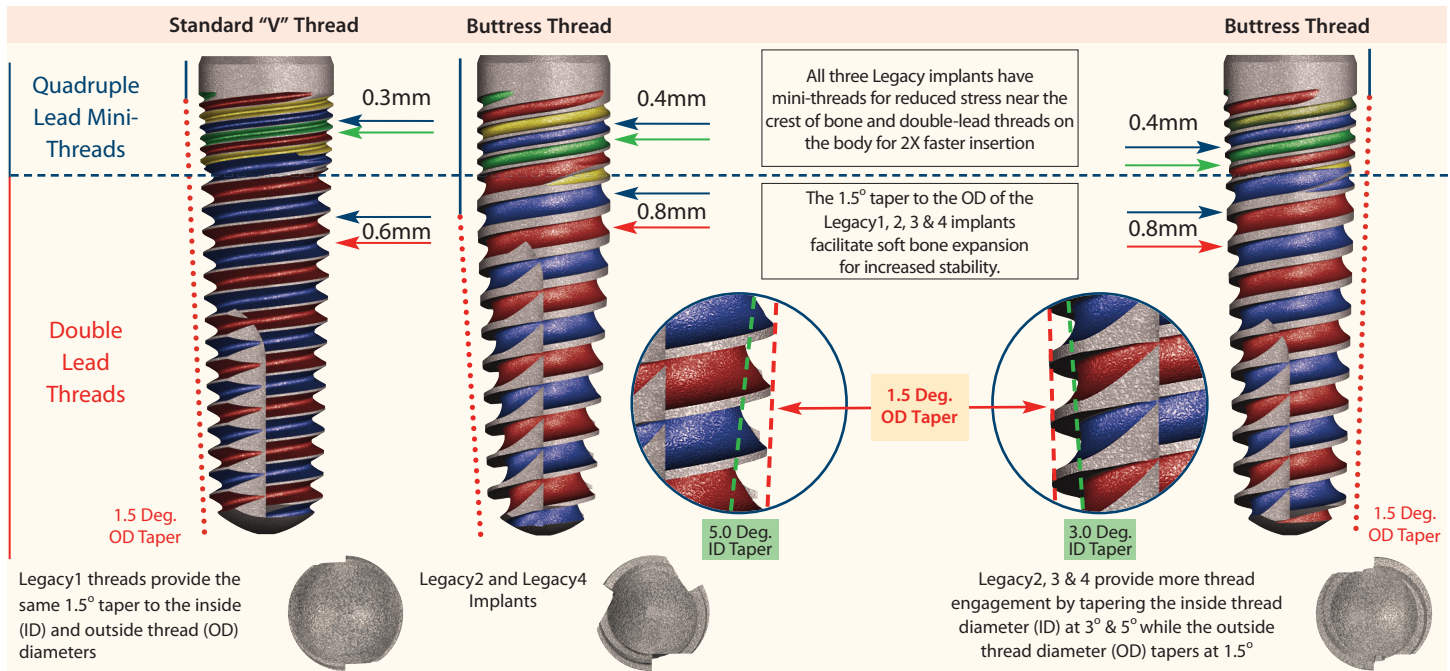
Table of Contents

	Page #	
	1-5	Implant Design, Surface & Dimensions
	6-13	Legacy1, Legacy2, Legacy3 & Legacy4 Implants 
	14-15	Labeling & Fixture-Mount Packaging
	16-17	Selection Chart for Legacy Systems 
	18	Cover Screws, Healing Collars, Transfers & Analogs
	19	Straight Abutment & Ancillary Components 
	20	Straight & Angled Contoured, Titanium & Zirconia Abutments
	21	Gold, Engaging & Non-Engaging Abutments 
	22	Selection Chart for Overdenture & Screw-Retained Restorations
	23	Screw-Receiving, Ball & GPS Abutments 
	24	Overdenture & Screw-Receiving Abutment Ancillary Products
	25-27	Instruments, Surgical Drills & Surgical Sequence 
	28-29	Surgical Tray



Mini-threads with Double-lead Threads for Faster Insertion

The bodies of the Legacy1, Legacy2, Legacy3 and Legacy4 implants are tapered to facilitate insertion in an undersized socket (stop at intermediate drill) for expansion in soft bone. This increases initial stability (*G. Niznick: Clinical Oral Health 2000 "Achieving Success in Soft Bone"*). The SBM textured surface extends over the entire endosseous portion of the Legacy system implants. Mini-threads start 1mm below the crest of the bone and extend for 2.0-2.5mm before transitioning into double-lead threads to the apex of the implant. The mini-threads are half the depth and half the distance between adjacent peaks compared to the double-lead threads that extend to the apex of the implant. Mini-threads reduce stress in the critical crestal bone region while double-lead threads reduce the number of turns required to seat the implant. Vertical cutting grooves extend up the implant from the apex for self-tapping insertion.

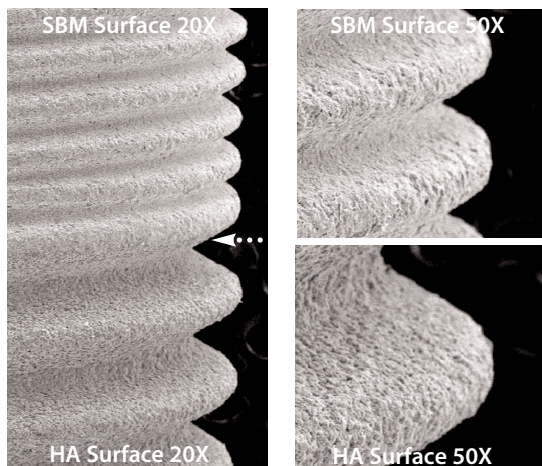


SBM™ and HA Coated Surface Options

SBM surface is created by using a Soluble Blast Media of Hydroxylapatite (HA) crystals to create a medium-rough texture. We use the same vendor for SBM and HA coated surface treatments as used by Paragon Implant Company from 1992-2000 when these studies were conducted.

SEM's of Our Surfaces

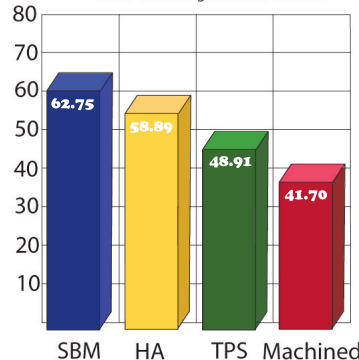
Mini-threads textured by blasting with SBM: Blasted with Soluble HA Particles
 HA Coating: High Crystalline 40u layer



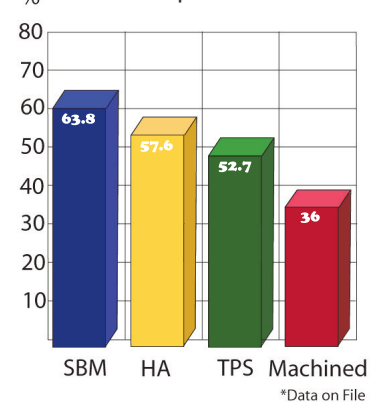
Animal Studies Bone Response to SBM Surface



Brazilian Study* Shows SBM Provides Superior Bone Contact
 Mean Percentage of Bone Contact

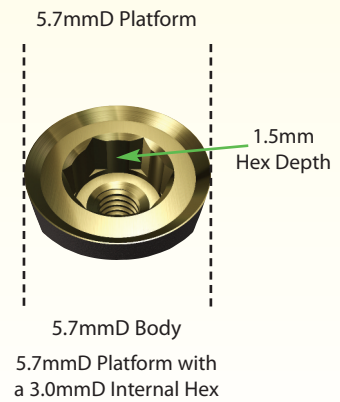
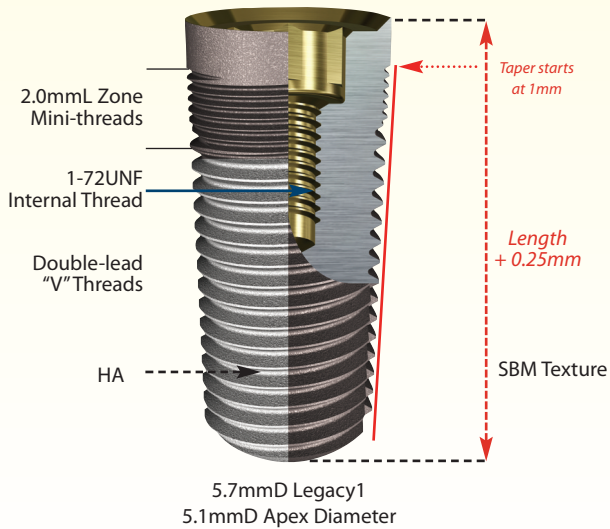
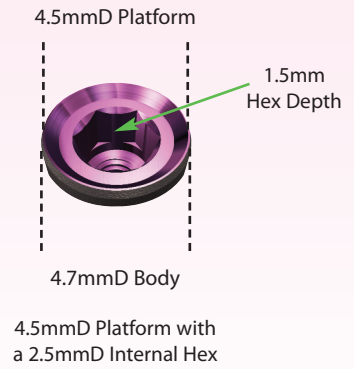
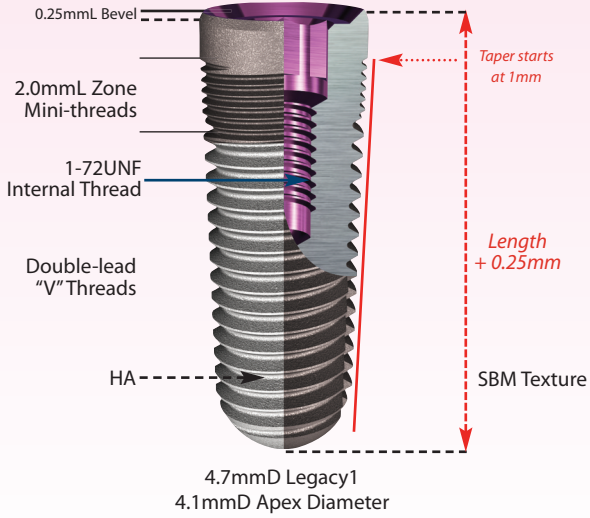
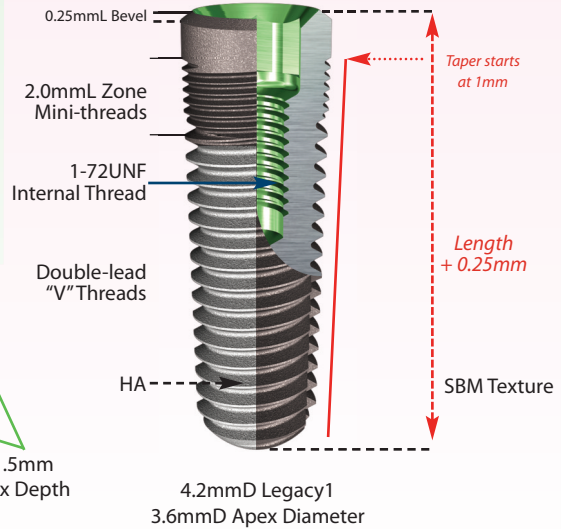
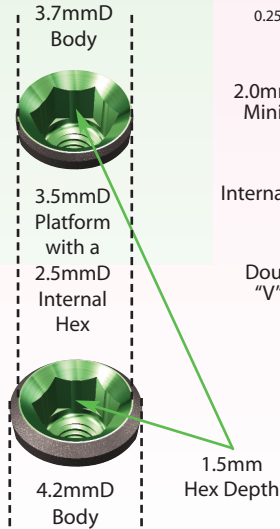
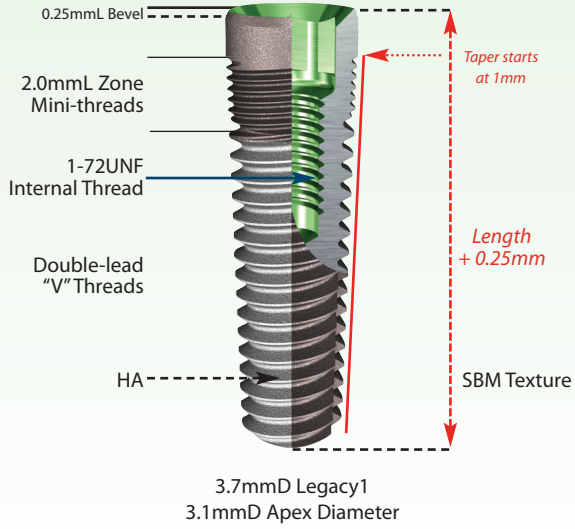


LSU Study* Shows SBM Provides Superior Bone Contact



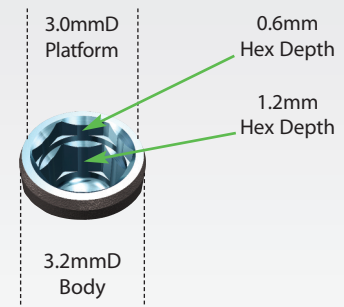
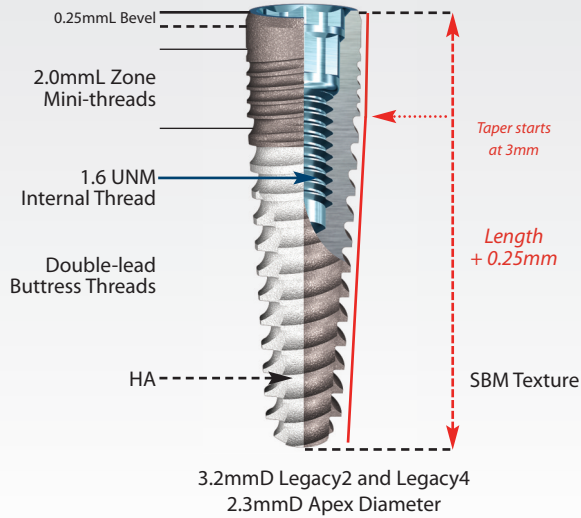


Legacy1 Implant Dimensions

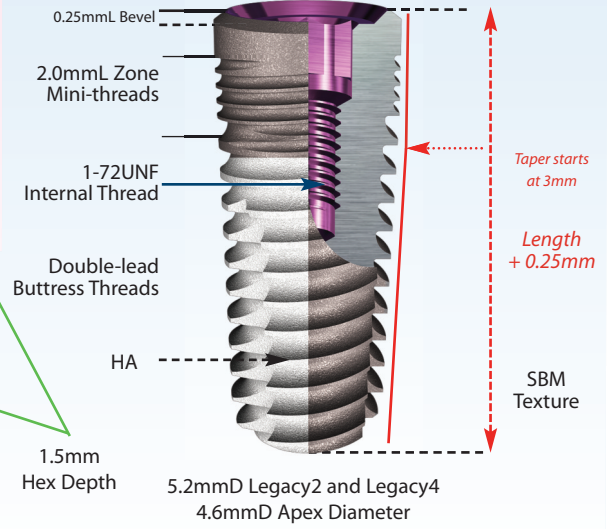
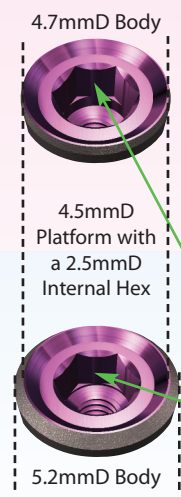
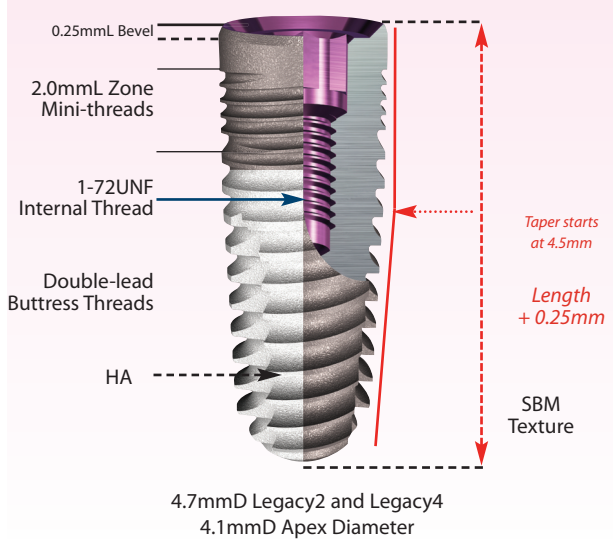
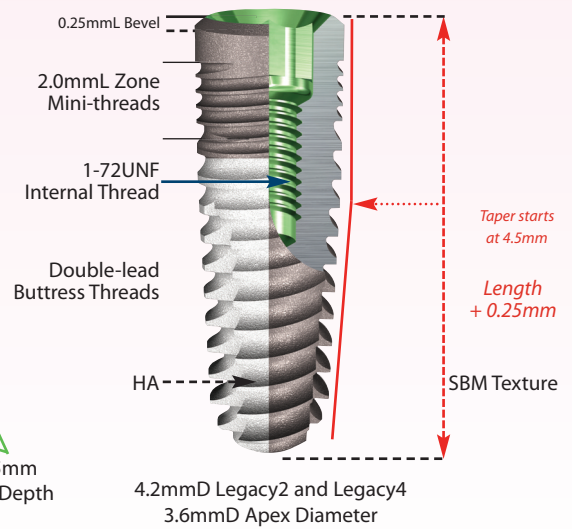
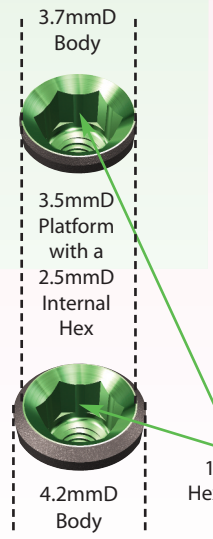
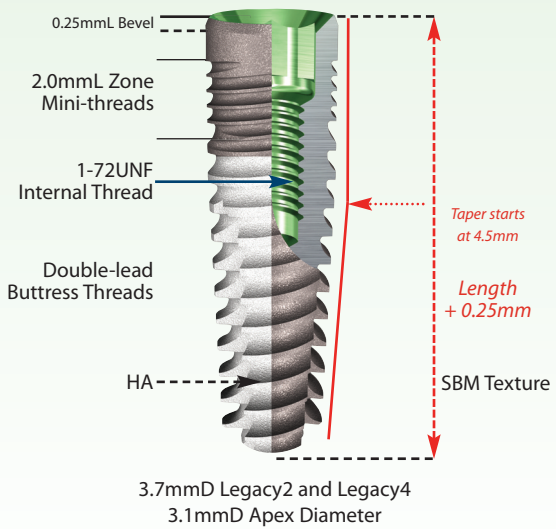




Legacy2 and Legacy4 Implant Dimensions

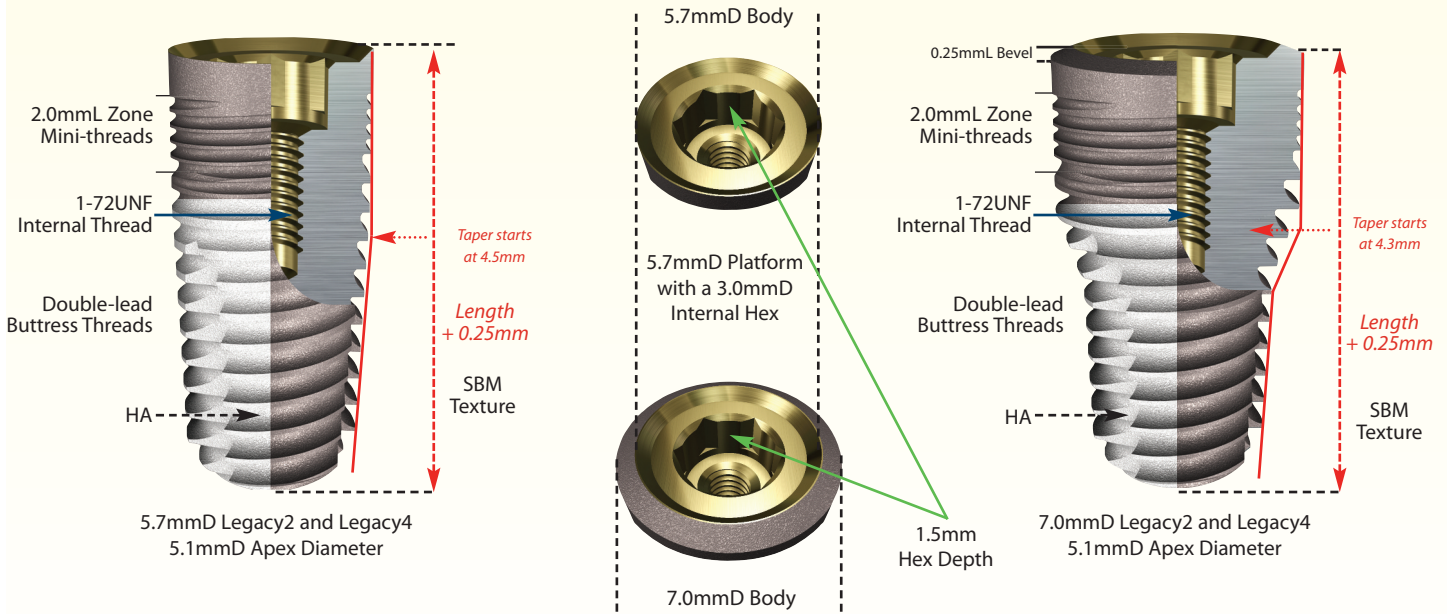


3.0mmD Platform with a Double Internal Hex
2.25mmD (upper) and 2.0mmD (lower)

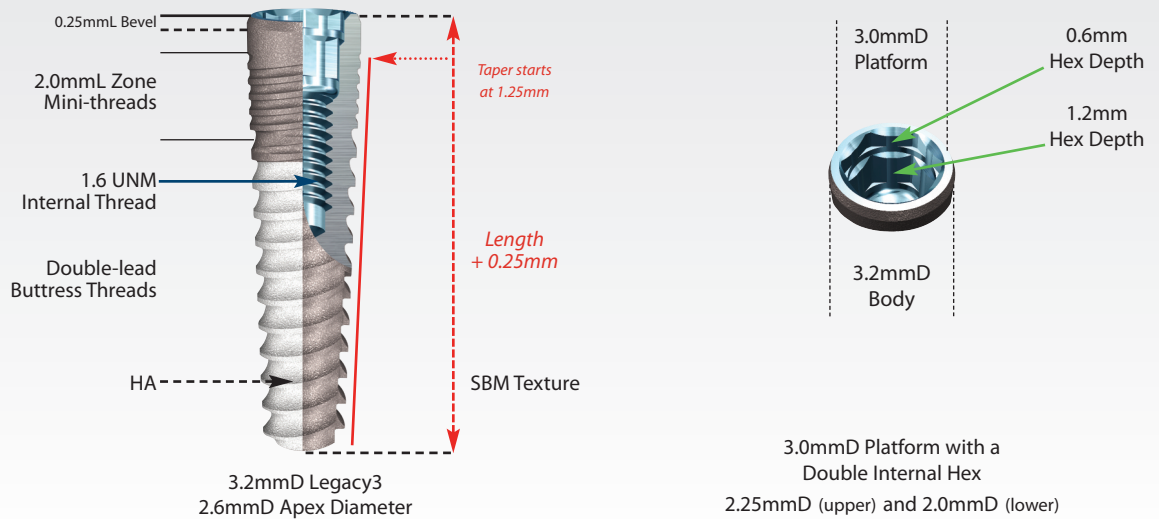




Legacy2 and Legacy4 Implant Dimensions continued

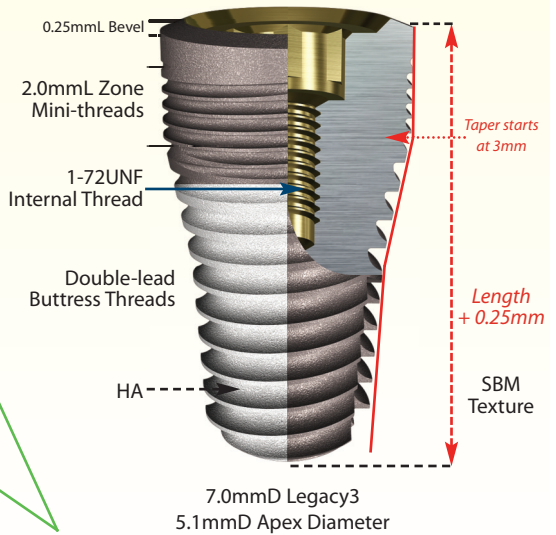
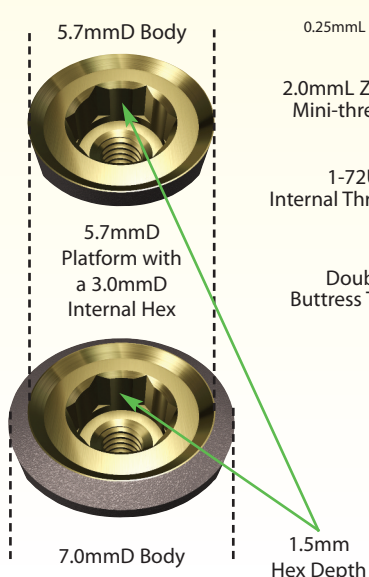
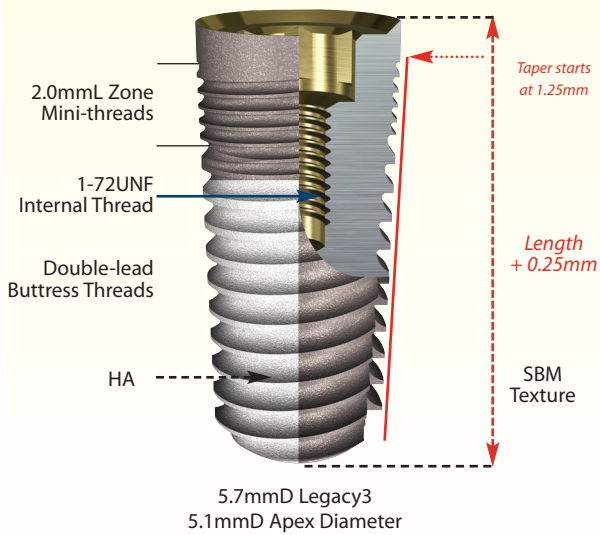
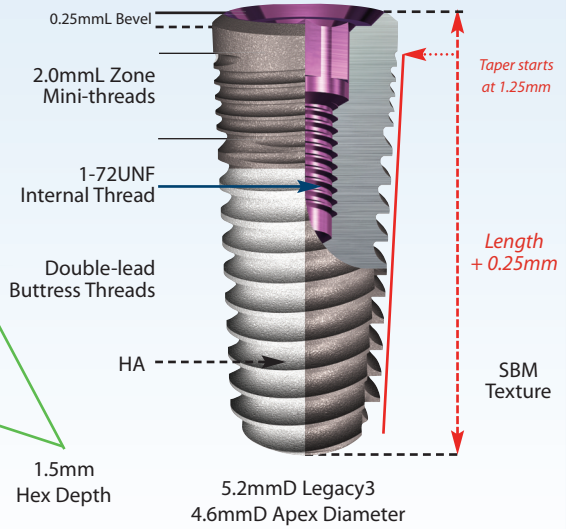
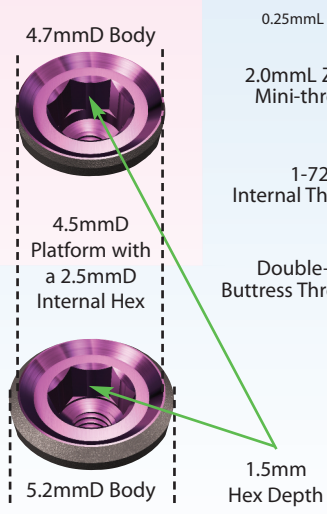
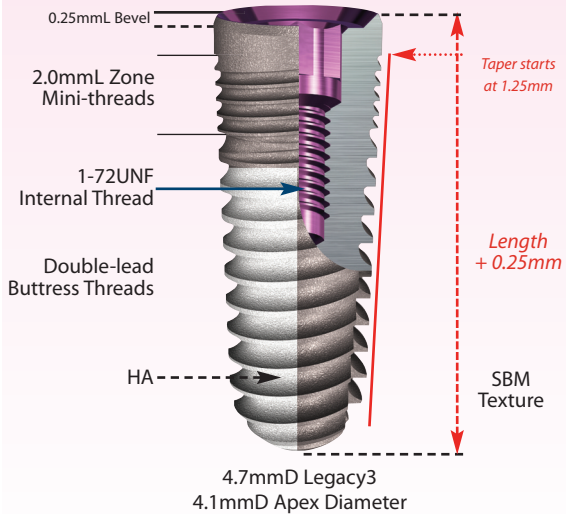
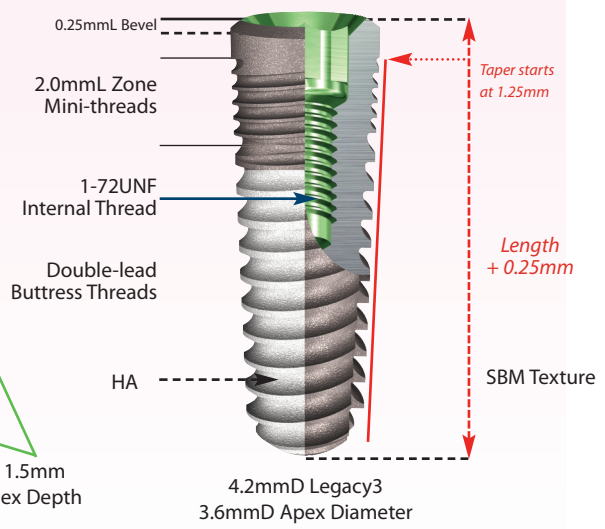
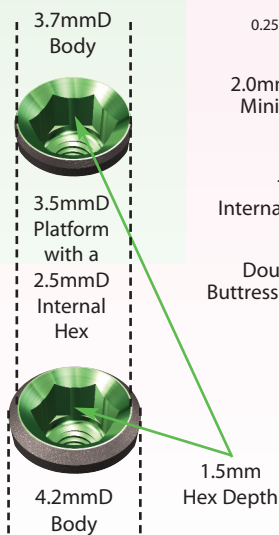
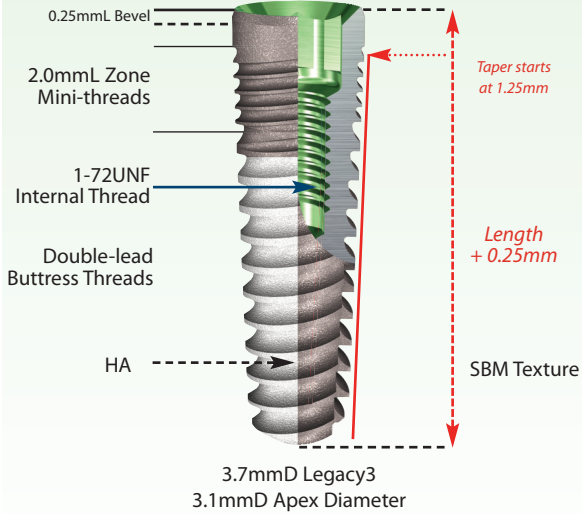


Legacy3 Implant Dimensions





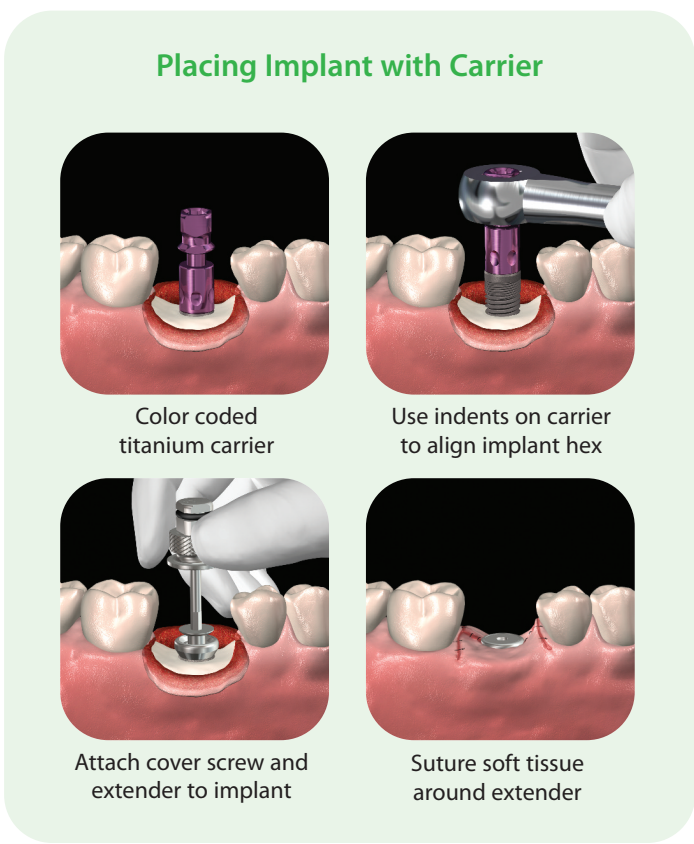
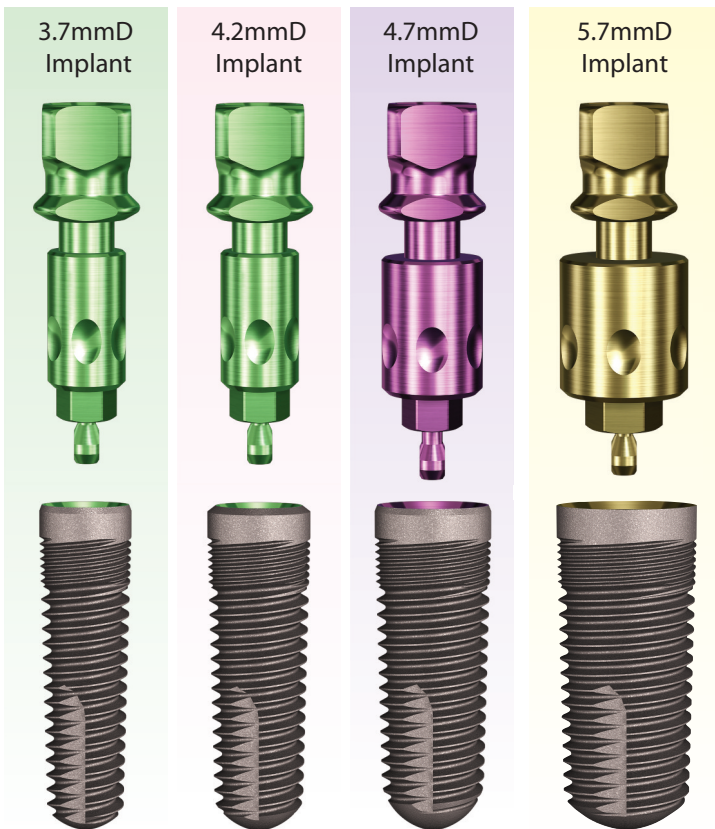
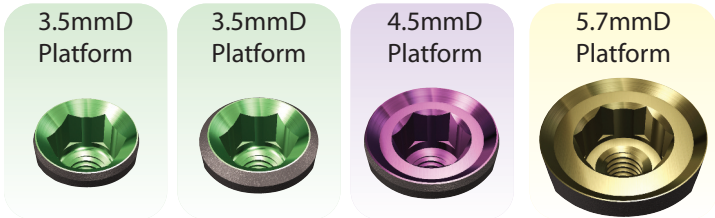
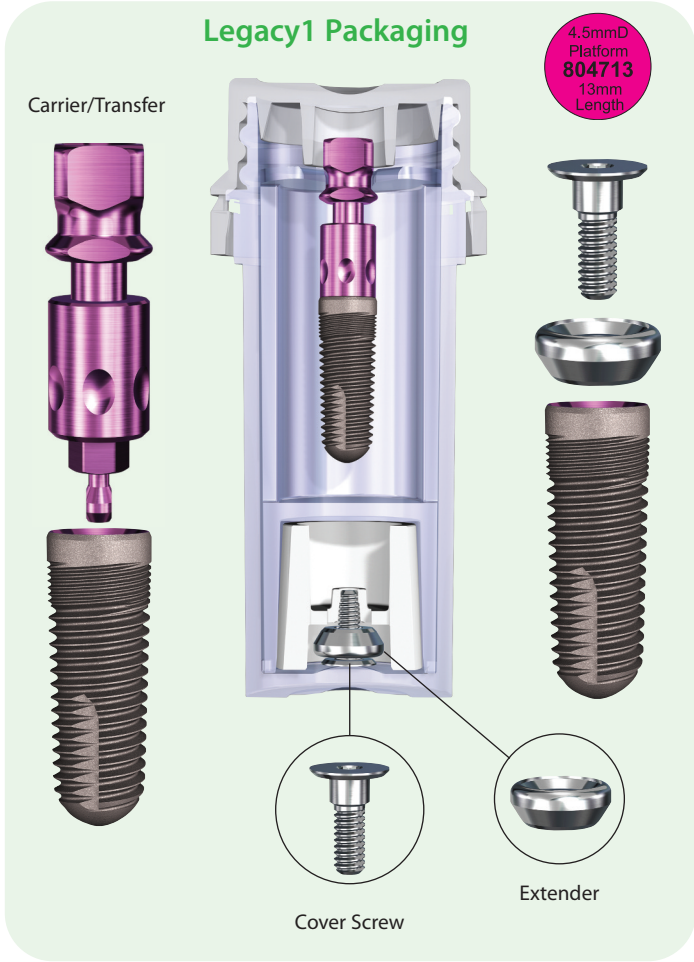
Legacy3 Implant Dimensions continued





Legacy1 Implant System Features & Benefits

- Internal connection with 1.5mm long hex & internal bevel
- Tapered body allows insertion using Tapered Screw-Vent® drills (except the 5.7mmD implant uses 5.4/4.8mmD Step Drill)
- Surface options: SBM (Soluble Blast Media) textured or HA-coated
- Double-lead "V" threads for 2X faster insertion & quadruple-lead threads near top for increased thread engagement & reduced stress
- 2mm extender retained by cover screw for use as a healing collar for one stage surgery
- Two self-tapping grooves, extending halfway up implant





Legacy1: Two-Piece Implant for Two-Stage Surgery

SBM and HA Surface Implants *Includes Cover Screw, Extender & Carrier/Transfer*

3.7mmD

SBM Code	HA Code	Diameter	Length	Platform
803708	813708	3.7mmD	8mmL	3.5mmD
803710	813710	3.7mmD	10mmL	3.5mmD
803711	813711	3.7mmD	11.5mmL	3.5mmD
803713	813713	3.7mmD	13mmL	3.5mmD
803716	813716	3.7mmD	16mmL	3.5mmD



4.2mmD

SBM Code	HA Code	Diameter	Length	Platform
804208	814208	4.2mmD	8mmL	3.5mmD
804210	814210	4.2mmD	10mmL	3.5mmD
804211	814211	4.2mmD	11.5mmL	3.5mmD
804213	814213	4.2mmD	13mmL	3.5mmD
804216	814216	4.2mmD	16mmL	3.5mmD



4.7mmD

SBM Code	HA Code	Diameter	Length	Platform
804708	814708	4.7mmD	8mmL	4.5mmD
804710	814710	4.7mmD	10mmL	4.5mmD
804711	814711	4.7mmD	11.5mmL	4.5mmD
804713	814713	4.7mmD	13mmL	4.5mmD
804716	814716	4.7mmD	16mmL	4.5mmD



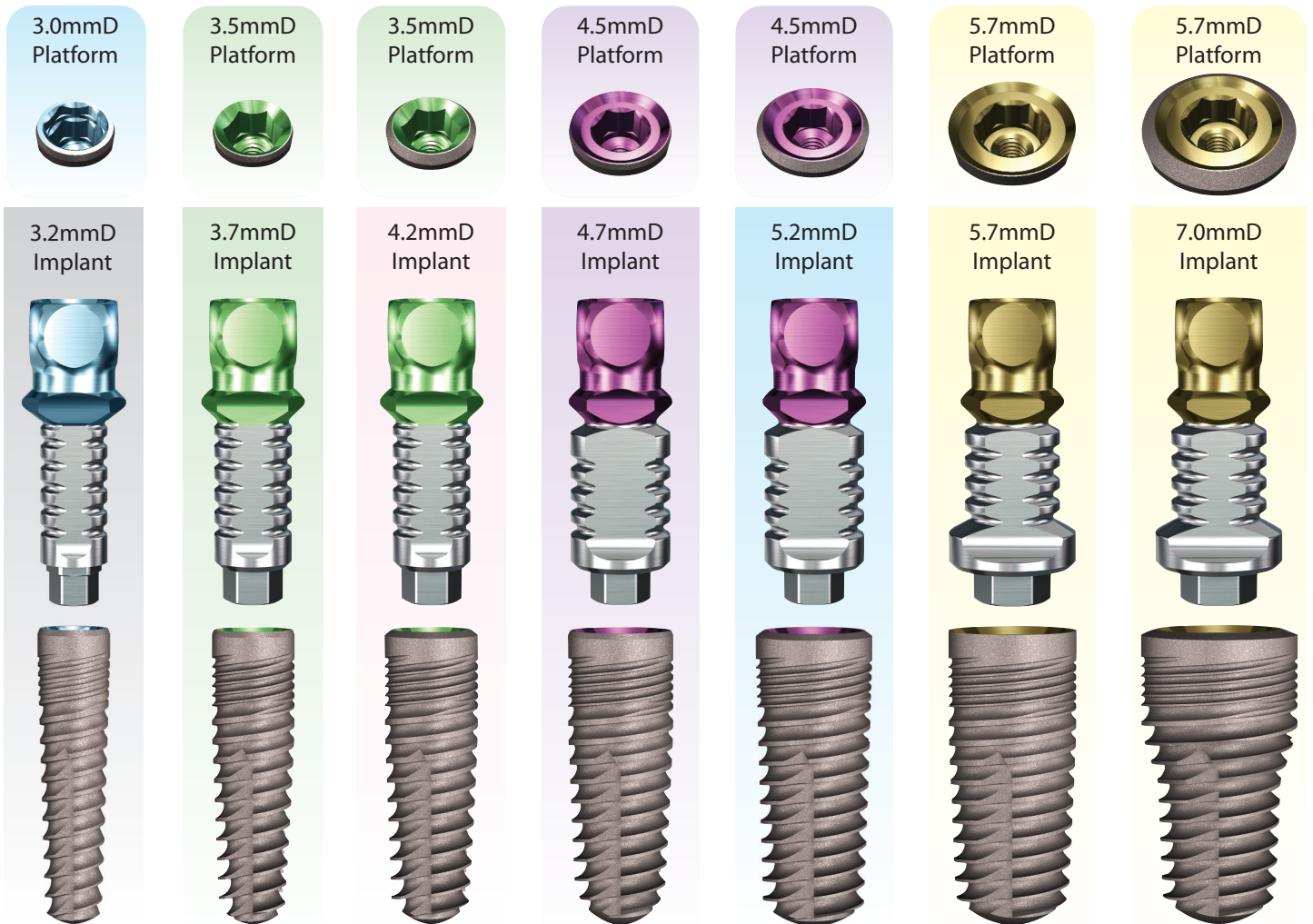
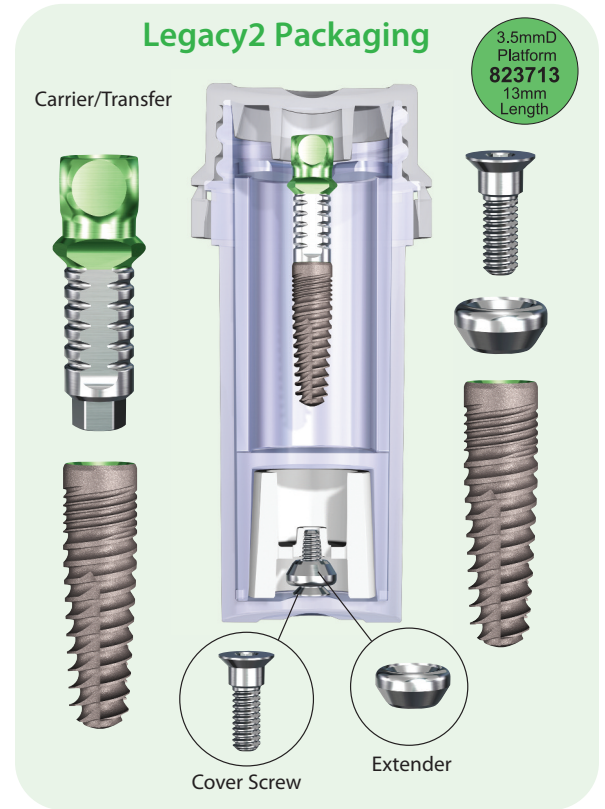
5.7mmD

SBM Code	HA Code	Diameter	Length	Platform
805708	815708	5.7mmD	8mmL	5.7mmD
805710	815710	5.7mmD	10mmL	5.7mmD
805711	815711	5.7mmD	11.5mmL	5.7mmD
805713	815713	5.7mmD	13mmL	5.7mmD
805716	815716	5.7mmD	16mmL	5.7mmD



Legacy2 Implant System Features & Benefits

- Internal connection with 1.5mm long hex & internal lead-in bevel
- Body is straight for top 1/3rd with bottom 2/3rds tapered for bone expansion. Surgically compatible with Tapered Screw-Vent® drills (except the 5.7mmD Implant uses 5.4/4.8mmD Step Drill)
- Surface options: SBM (Soluble Blast Media) textured or HA-coated
- Double-lead buttress threads for improved insertion & quadruple-lead threads near top for increased thread engagement & reduced stress
- 2mm extender retained by cover screw for use as a healing collar for one stage surgery
- Color-coded carrier usable as a closed-tray transfer & temporary abutment
- Three aggressive self-tapping grooves extending 2/3rds length up the implant





Legacy2: Two-Piece Implant for Two-Stage Surgery

SBM and HA Surface Implants Includes Cover Screw, Extender & Carrier/Transfer Extender NOT supplied with 6mmL implant

Legacy2

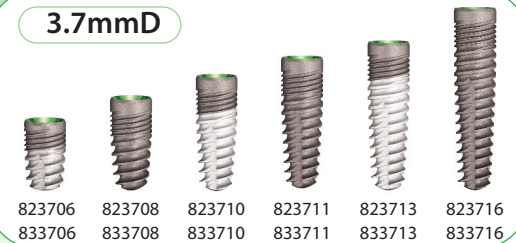
3.2mmD

SBM Code	HA Code	Diameter	Length	Platform
823208	833208	3.2mmD	8mmL	3.0mmD
823210	833210	3.2mmD	10mmL	3.0mmD
823211	833211	3.2mmD	11.5mmL	3.0mmD
823213	833213	3.2mmD	13mmL	3.0mmD
823216	833216	3.2mmD	16mmL	3.0mmD



3.7mmD

SBM Code	HA Code	Diameter	Length	Platform
823706	833706	3.7mmD	6mmL	3.5mmD
823708	833708	3.7mmD	8mmL	3.5mmD
823710	833710	3.7mmD	10mmL	3.5mmD
823711	833711	3.7mmD	11.5mmL	3.5mmD
823713	833713	3.7mmD	13mmL	3.5mmD
823716	833716	3.7mmD	16mmL	3.5mmD



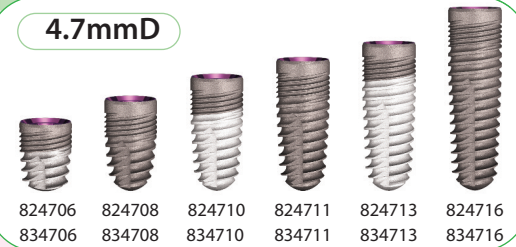
4.2mmD

SBM Code	HA Code	Diameter	Length	Platform
824206	834206	4.2mmD	6mmL	3.5mmD
824208	834208	4.2mmD	8mmL	3.5mmD
824210	834210	4.2mmD	10mmL	3.5mmD
824211	834211	4.2mmD	11.5mmL	3.5mmD
824213	834213	4.2mmD	13mmL	3.5mmD
824216	834216	4.2mmD	16mmL	3.5mmD



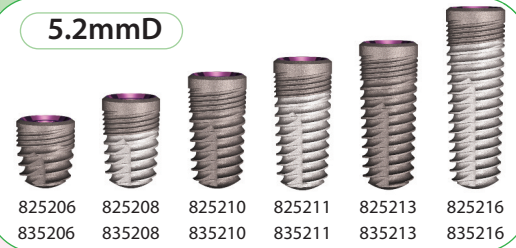
4.7mmD

SBM Code	HA Code	Diameter	Length	Platform
824706	834706	4.7mmD	6mmL	4.5mmD
824708	834708	4.7mmD	8mmL	4.5mmD
824710	834710	4.7mmD	10mmL	4.5mmD
824711	834711	4.7mmD	11.5mmL	4.5mmD
824713	834713	4.7mmD	13mmL	4.5mmD
824716	834716	4.7mmD	16mmL	4.5mmD



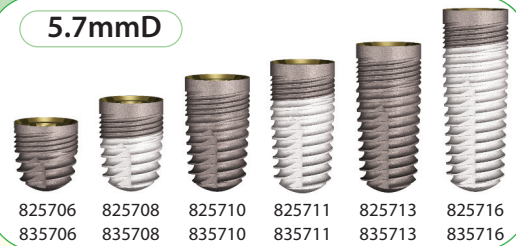
5.2mmD

SBM Code	HA Code	Diameter	Length	Platform
825206	835206	5.2mmD	6mmL	4.5mmD
825208	835208	5.2mmD	8mmL	4.5mmD
825210	835210	5.2mmD	10mmL	4.5mmD
825211	835211	5.2mmD	11.5mmL	4.5mmD
825213	835213	5.2mmD	13mmL	4.5mmD
825216	835216	5.2mmD	16mmL	4.5mmD



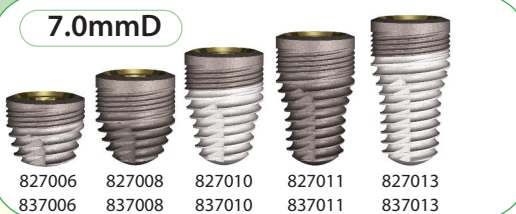
5.7mmD

SBM Code	HA Code	Diameter	Length	Platform
825706	835706	5.7mmD	6mmL	5.7mmD
825708	835708	5.7mmD	8mmL	5.7mmD
825710	835710	5.7mmD	10mmL	5.7mmD
825711	835711	5.7mmD	11.5mmL	5.7mmD
825713	835713	5.7mmD	13mmL	5.7mmD
825716	835716	5.7mmD	16mmL	5.7mmD



7.0mmD

SBM Code	HA Code	Diameter	Length	Platform
827006	837006	7.0mmD	6mmL	5.7mmD
827008	837008	7.0mmD	8mmL	5.7mmD
827010	837010	7.0mmD	10mmL	5.7mmD
827011	837011	7.0mmD	11.5mmL	5.7mmD
827013	837013	7.0mmD	13mmL	5.7mmD





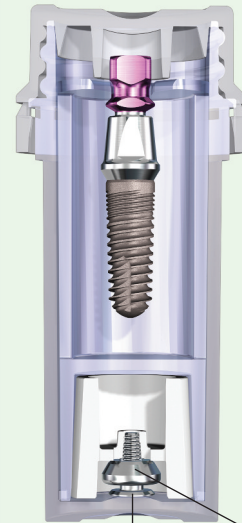
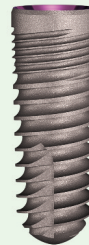
Legacy3 Implant System Features & Benefits

- Internal connection with 1.5mm long hex & internal lead-in bevel
- Tapered body allows insertion using Tapered Screw-Vent® drills for 3.7mmD, 4.2mmD & 4.7mmD implants only
- Surface options: SBM (Soluble Blast Media) textured or HA-coated
- Double-lead buttress threads for improved insertion & initial stability, quadruple-lead threads near top for increased thread engagement & reduced stress
- 2mm extender retained by cover screw for use as a healing collar or for one or two-stage surgery
- Color-coded carrier usable as a closed-tray transfer and/or final full-contour abutment
- Two self-tapping grooves, extending halfway up implant

Legacy3 Packaging

4.5mmD Platform
854713
13mm Length

Carrier/Transfer



Cover Screw



Extender

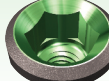
3.0mmD Platform



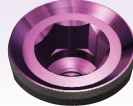
3.5mmD Platform



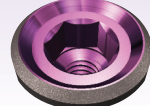
3.5mmD Platform



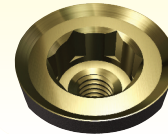
4.5mmD Platform



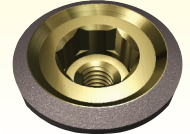
4.5mmD Platform



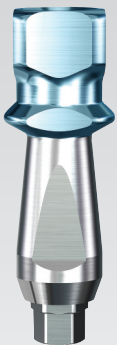
5.7mmD Platform



5.7mmD Platform



3.2mmD Implant



3.7mmD Implant



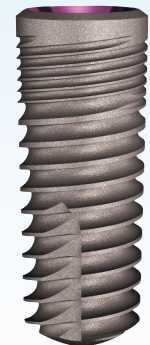
4.2mmD Implant



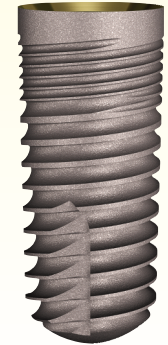
4.7mmD Implant



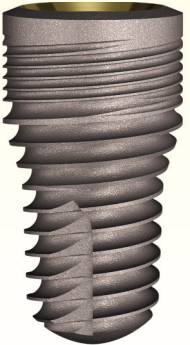
5.2mmD Implant



5.7mmD Implant



7.0mmD Implant





Legacy3: Two-Piece Implant for Two-Stage Surgery

SBM and HA Surface Implants *Includes Cover Screw, Extender & Carrier/Transfer Extender NOT supplied with 6mmL implant*

Legacy3

3.2mmD

SBM Code	HA Code	Diameter	Length	Platform
853208	863208	3.2mmD	8mmL	3.0mmD
853210	863210	3.2mmD	10mmL	3.0mmD
853211	863211	3.2mmD	11.5mmL	3.0mmD
853213	863213	3.2mmD	13mmL	3.0mmD
853216	863216	3.2mmD	16mmL	3.0mmD



3.7mmD

SBM Code	HA Code	Diameter	Length	Platform
853706	863706	3.7mmD	6mmL	3.5mmD
853708	863708	3.7mmD	8mmL	3.5mmD
853710	863710	3.7mmD	10mmL	3.5mmD
853711	863711	3.7mmD	11.5mmL	3.5mmD
853713	863713	3.7mmD	13mmL	3.5mmD
853716	863716	3.7mmD	16mmL	3.5mmD



4.2mmD

SBM Code	HA Code	Diameter	Length	Platform
854206	864206	4.2mmD	6mmL	3.5mmD
854208	864208	4.2mmD	8mmL	3.5mmD
854210	864210	4.2mmD	10mmL	3.5mmD
854211	864211	4.2mmD	11.5mmL	3.5mmD
854213	864213	4.2mmD	13mmL	3.5mmD
854216	864216	4.2mmD	16mmL	3.5mmD



4.7mmD

SBM Code	HA Code	Diameter	Length	Platform
854706	864706	4.7mmD	6mmL	4.5mmD
854708	864708	4.7mmD	8mmL	4.5mmD
854710	864710	4.7mmD	10mmL	4.5mmD
854711	864711	4.7mmD	11.5mmL	4.5mmD
854713	864713	4.7mmD	13mmL	4.5mmD
854716	864716	4.7mmD	16mmL	4.5mmD



5.2mmD

SBM Code	HA Code	Diameter	Length	Platform
855206	865206	5.2mmD	6mmL	4.5mmD
855208	865208	5.2mmD	8mmL	4.5mmD
855210	865210	5.2mmD	10mmL	4.5mmD
855211	865211	5.2mmD	11.5mmL	4.5mmD
855213	865213	5.2mmD	13mmL	4.5mmD
855216	865216	5.2mmD	16mmL	4.5mmD



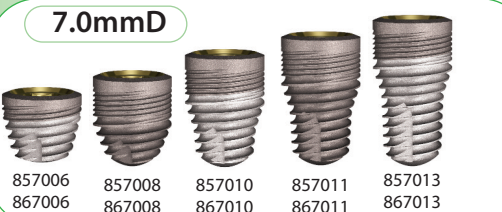
5.7mmD

SBM Code	HA Code	Diameter	Length	Platform
855706	865706	5.7mmD	6mmL	5.7mmD
855708	865708	5.7mmD	8mmL	5.7mmD
855710	865710	5.7mmD	10mmL	5.7mmD
855711	865711	5.7mmD	11.5mmL	5.7mmD
855713	865713	5.7mmD	13mmL	5.7mmD
855716	865716	5.7mmD	16mmL	5.7mmD



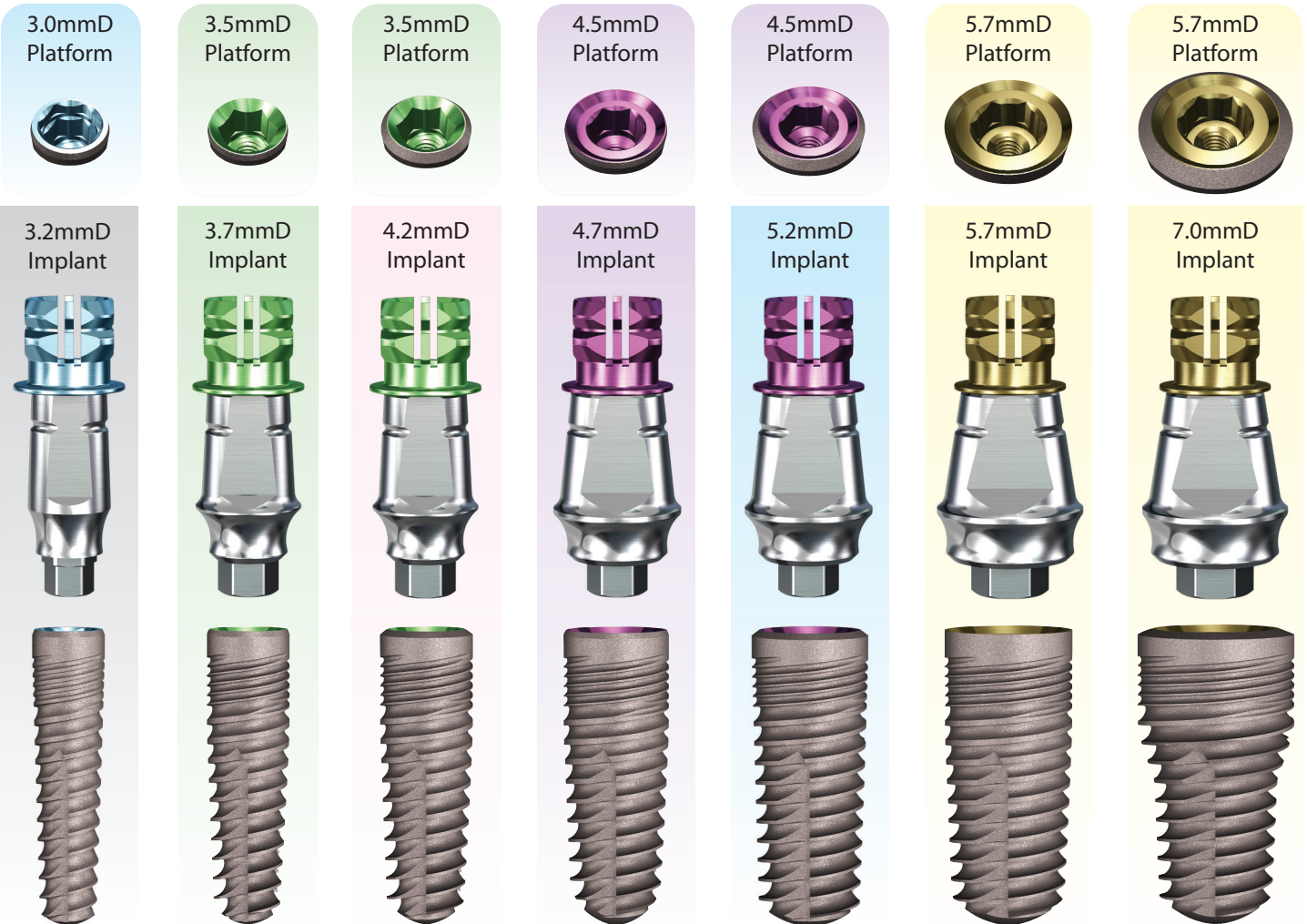
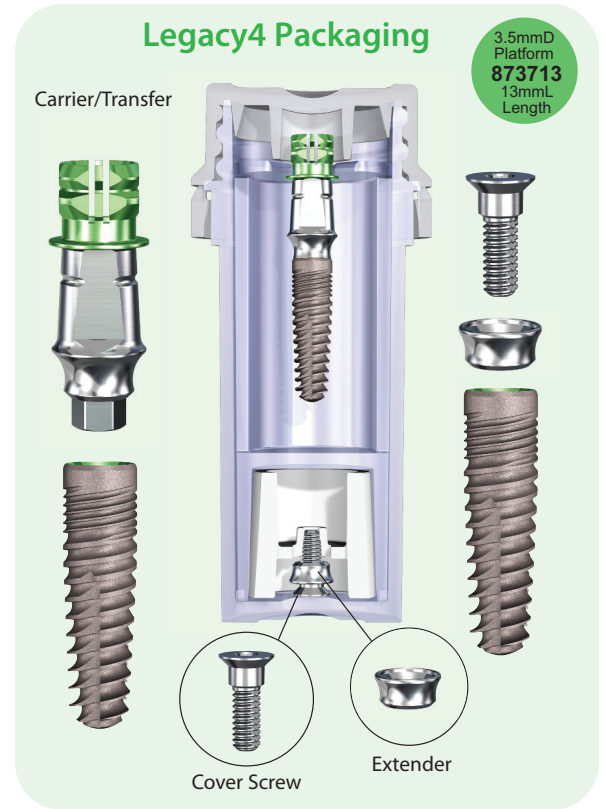
7.0mmD

SBM Code	HA Code	Diameter	Length	Platform
857006	867006	7.0mmD	6mmL	5.7mmD
857008	867008	7.0mmD	8mmL	5.7mmD
857010	867010	7.0mmD	10mmL	5.7mmD
857011	867011	7.0mmD	11.5mmL	5.7mmD
857013	867013	7.0mmD	13mmL	5.7mmD



Legacy4 Implant System Features & Benefits

- Revolutionary new, two-piece fixture-mount. Top includes torque-safety feature and detaches in impression for metal-to-metal transfer accuracy
- Fixture-mount may be shortened at the line to function as a final preparable abutment
- 2mm extender retained by cover screw for use as a healing collar for one-stage surgery features a concave transgingival profile which matches the fixture-mount
- Internal connection with 1.5mm long hex & internal lead-in bevel
- Body is straight for top 1/3rd with bottom 2/3rds tapered for bone expansion. Surgically-compatible with Tapered Screw-Vent® drills (except the 5.7mmD implant uses 5.4/4.8mmD Step Drill)
- Double-lead buttress threads for improved insertion and quadruple-lead threads near top for increased thread engagement & reduced stress
- Surface options: SBM (Soluble Blast Media) textured or HA-coated
- Three aggressive self-tapping grooves extend 2/3rds length up the implant





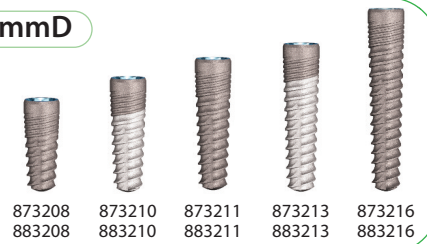
Legacy4: Two-Piece Implant for Two-Stage Surgery

SBM and HA Surface Implants Includes Cover Screw, Extender & Carrier/Transfer Extender NOT supplied with 6mmL implant

Legacy4

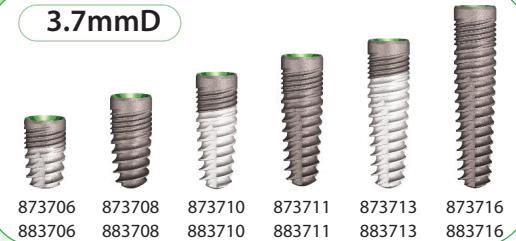
3.2mmD

SBM Code	HA Code	Diameter	Length	Platform
873208	883208	3.2mmD	8mmL	3.0mmD
873210	883210	3.2mmD	10mmL	3.0mmD
873211	883211	3.2mmD	11.5mmL	3.0mmD
873213	883213	3.2mmD	13mmL	3.0mmD
873216	883216	3.2mmD	16mmL	3.0mmD



3.7mmD

SBM Code	HA Code	Diameter	Length	Platform
873706	883706	3.7mmD	6mmL	3.5mmD
873708	883708	3.7mmD	8mmL	3.5mmD
873710	883710	3.7mmD	10mmL	3.5mmD
873711	883711	3.7mmD	11.5mmL	3.5mmD
873713	883713	3.7mmD	13mmL	3.5mmD
873716	883716	3.7mmD	16mmL	3.5mmD



4.2mmD

SBM Code	HA Code	Diameter	Length	Platform
874206	884206	4.2mmD	6mmL	3.5mmD
874208	884208	4.2mmD	8mmL	3.5mmD
874210	884210	4.2mmD	10mmL	3.5mmD
874211	884211	4.2mmD	11.5mmL	3.5mmD
874213	884213	4.2mmD	13mmL	3.5mmD
874216	884216	4.2mmD	16mmL	3.5mmD



4.7mmD

SBM Code	HA Code	Diameter	Length	Platform
874706	884706	4.7mmD	6mmL	4.5mmD
874708	884708	4.7mmD	8mmL	4.5mmD
874710	884710	4.7mmD	10mmL	4.5mmD
874711	884711	4.7mmD	11.5mmL	4.5mmD
874713	884713	4.7mmD	13mmL	4.5mmD
874716	884716	4.7mmD	16mmL	4.5mmD



5.2mmD

SBM Code	HA Code	Diameter	Length	Platform
875206	885206	5.2mmD	6mmL	4.5mmD
875208	885208	5.2mmD	8mmL	4.5mmD
875210	885210	5.2mmD	10mmL	4.5mmD
875211	885211	5.2mmD	11.5mmL	4.5mmD
875213	885213	5.2mmD	13mmL	4.5mmD
875216	885216	5.2mmD	16mmL	4.5mmD



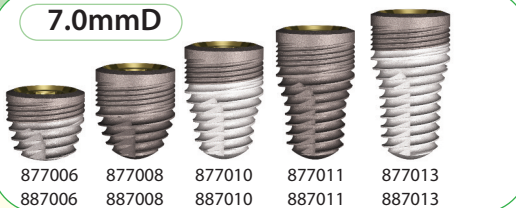
5.7mmD

SBM Code	HA Code	Diameter	Length	Platform
875706	885706	5.7mmD	6mmL	5.7mmD
875708	885708	5.7mmD	8mmL	5.7mmD
875710	885710	5.7mmD	10mmL	5.7mmD
875711	885711	5.7mmD	11.5mmL	5.7mmD
875713	885713	5.7mmD	13mmL	5.7mmD
875716	885716	5.7mmD	16mmL	5.7mmD



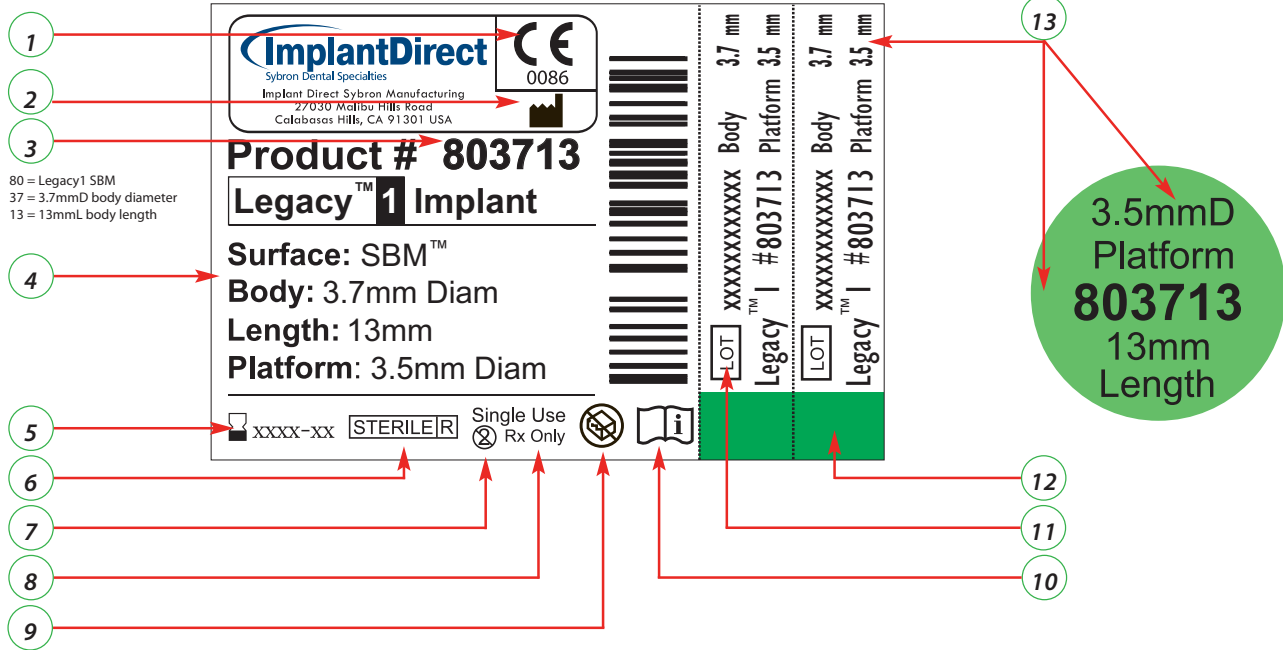
7.0mmD

SBM Code	HA Code	Diameter	Length	Platform
877006	887006	7.0mmD	6mmL	5.7mmD
877008	887008	7.0mmD	8mmL	5.7mmD
877010	887010	7.0mmD	10mmL	5.7mmD
877011	887011	7.0mmD	11.5mmL	5.7mmD
877013	887013	7.0mmD	13mmL	5.7mmD



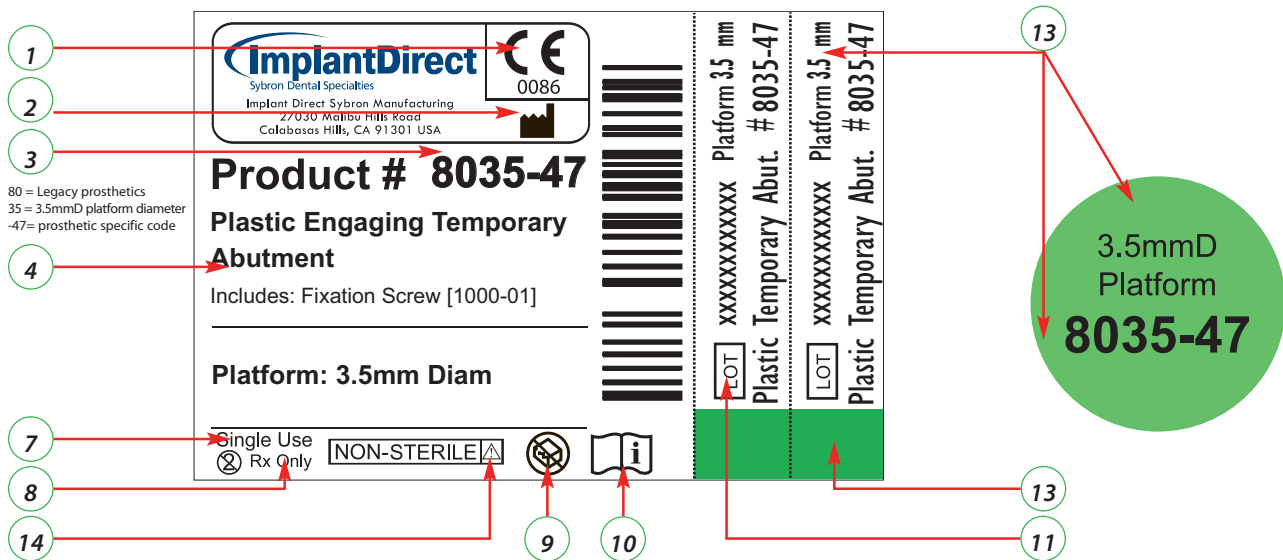


Legacy Implant Vial and Cap Label



80 = Legacy1 SBM
37 = 3.7mmD body diameter
13 = 13mmL body length

Legacy Prosthetic Vial and Cap Label



80 = Legacy prosthetics
35 = 3.5mmD platform diameter
-47= prosthetic specific code

- | | |
|--|--|
| | 1) Our products carry the CE mark and fulfill the requirements of the Medical Device Directive 93/42/EEC |
| | 2) Manufacturer Symbol |
| | 3) Product code or reference number |
| | 4) Product description |
| | 5) Use before expiration date (XXXX-XX) |
| | 6) Gamma sterilization symbol |
| | 7) Single-use only symbol |
| | 8) Caution: US law restricts the sale of these devices by or on the order of a dentist or physician |
| | 9) Tamper proof symbol |
| | 10) Refer to Instructions For Use (IFU) |
| | 11) Lot number (XXXXXXXXXX) |
| | 12) Implant body diameter color reference on surgical tray |
| | 13) Implant prosthetic platform diameter (written and color-coded) |
| | 14) Non-sterile symbol |



The implant is mounted on a color-coded Carrier/Transfer.
A cover screw and extender are included in each vial.



Prepare surgical site with double cutting step drill



All the implants come in a sterile vial



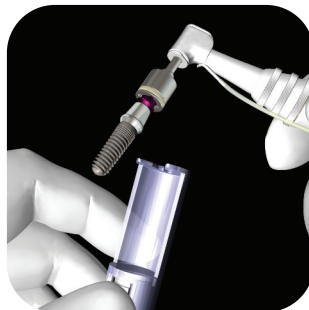
Each vial label is color-coded with two tear-off labels



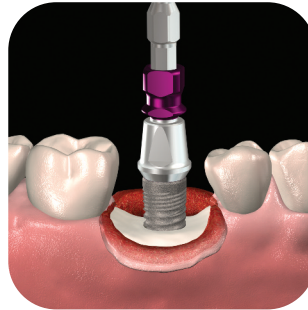
Each cap label is color coded by platform diameter of implant



Drop implant assembly out of vial onto a sterile surface



Remove implant assembly with insertion tool & drill or ratchet



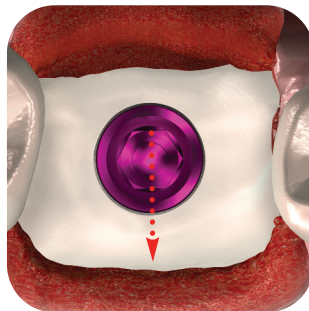
Insert implant into osteotomy



Index fixture-mount flat to labial



Remove fixture-mount



Align the flat of the fixture mount to the labial



Remove the holder containing the cover screw & extender



Unscrew the cover screw & extender



Attach the cover screw to implant



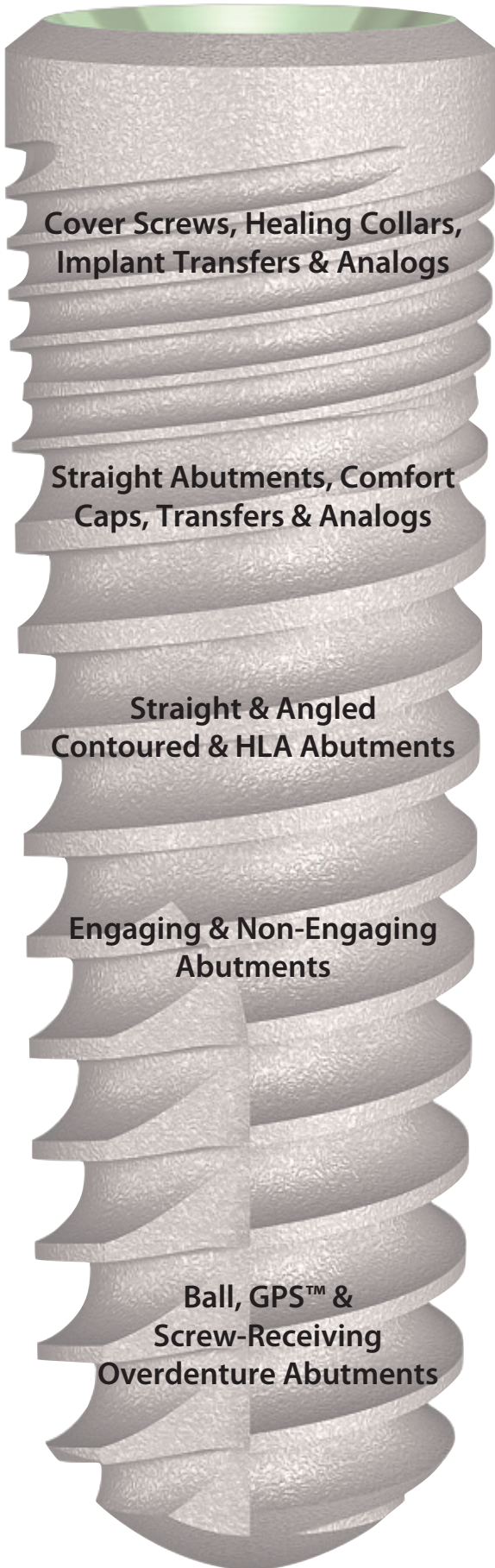
Suture soft tissue over cover screw



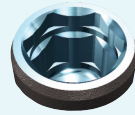
Attach the cover screw & extender to implant



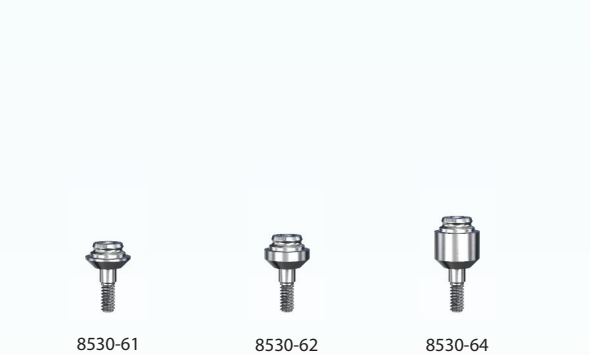
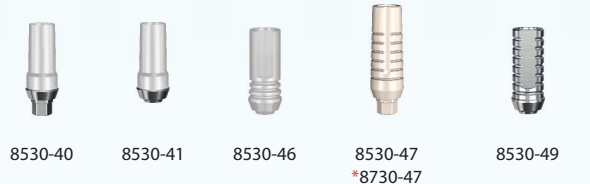
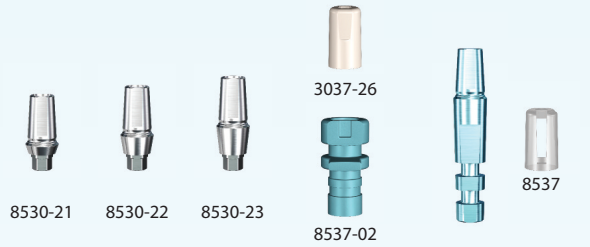
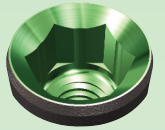
Suture soft tissue around cover screw & extender



3.0mmD Platform



3.5mmD Platform

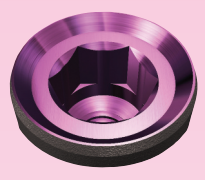


*concave profile



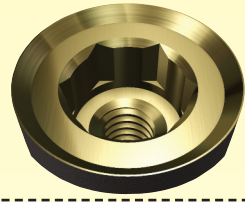
Fixture-Mount

4.5mmD Platform

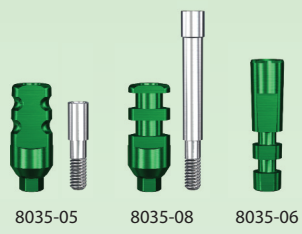


Fixture-Mount

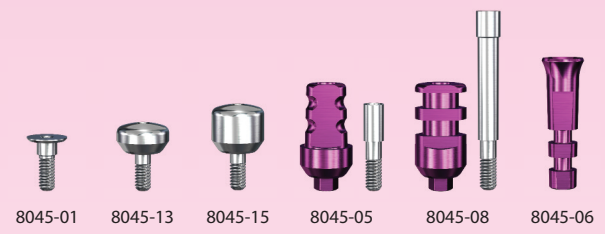
5.7mmD Platform



Fixture-Mount



8035-05 8035-08 8035-06



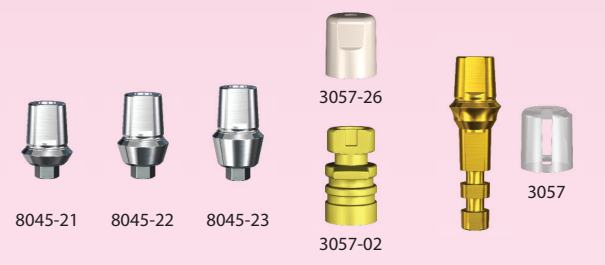
8045-01 8045-13 8045-15 8045-05 8045-08 8045-06



8057-01 8057-13 8057-15 8057-05 8057-08 8057-06



3047-26 3047 3047-02



8045-21 8045-22 8045-23 3057-26 3057 3057-02



8057-21 8057-22 8057-23 3065-26 3065 3065-02



8035-51-15C 8035-51-08C 8035-52-15C 8035-52-08C



HLA3-4 HLA3-5 8045-31 8045-31C 8045-32 8045-32C 8045-51 8045-52 8045-51-15C 8045-52-15C 8045-51-08C 8045-52-08C HLA4-5 HLA4-6



8057-31 8057-32 8057-51 8057-52 HLA5-6 HLA5-7



8035-46 8035-47 *8735-47 8035-49



8045-40 8045-41 8045-44 8045-46 8045-47 *8745-47 8045-49



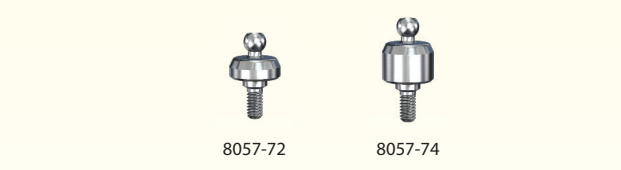
8057-40 8057-44 8057-46 8057-47 *8757-47 8057-49



8035-74



8045-72 8045-74



8057-72 8057-74



8035-61 8035-62 8035-64



8045-64-15 8045-64-30 8045-61 8045-62 8045-64



8057-61 8057-62 8057-64



8035-92 8035-93 8035-94 8035-95



8045-94-15 8045-94-30 8045-91 8045-92 8045-93 8045-94 8045-95



8057-91 8057-92 8057-93 8057-94 8057-95



Cover Screws, Healing Collars, Transfers & Analogs

Surgical Cover Screws

Requires 1.25mmD Hex Tool

Code	Code [*for 6mmL Only]	Platform
8530-01	-	3.0mmD
8035-01	8035-01S	3.5mmD
8045-01	8045-01S	4.5mmD
8057-01	8057-01S	5.7mmD



Healing Collars

Requires 1.25mmD Hex Tool

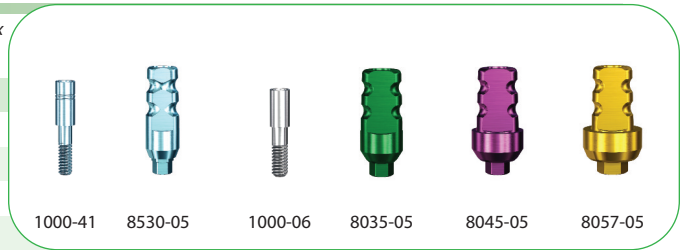
Code	Platform	Width	Length
8530-13	3.0mmD	3.8mmD	3mmL
8530-15	3.0mmD	3.8mmD	5mmL
8035-13	3.5mmD	4.8mmD	3mmL
8035-15	3.5mmD	4.8mmD	5mmL
8045-13	4.5mmD	5.8mmD	3mmL
8045-15	4.5mmD	5.8mmD	5mmL
8057-13	5.7mmD	6.6mmD	3mmL
8057-15	5.7mmD	6.6mmD	5mmL



Closed-Tray Implant Transfers

Price includes Fixation Screw with 1.25mmD Hex

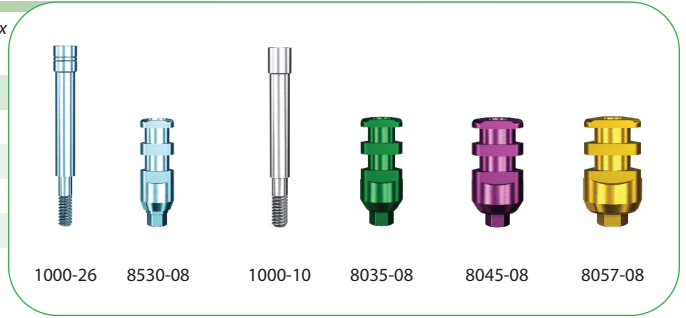
Code	Platform	Replacement Screw
8530-05	3.0mmD	1000-41
8035-05	3.5mmD	1000-06
8045-05	4.5mmD	1000-06
8057-05	5.7mmD	1000-06



Open-Tray Implant Transfers

Price includes Fixation Screw with 1.25mmD Hex

Code	Platform	Replacement Screw
8530-08	3.0mmD	1000-26
8035-08	3.5mmD	1000-10
8045-08	4.5mmD	1000-10
8057-08	5.7mmD	1000-10



Implant Analogs

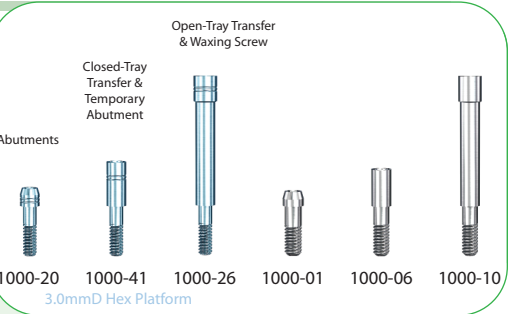
Code	Platform
8530-06	3.0mmD
8035-06	3.5mmD
8045-06	4.5mmD
8057-06	5.7mmD



Replacement Fixation Screws

Requires 1.25mmD Hex Tool

Code	Description
1000-20	For use with 3.0mmD hexagon platform
1000-41	For use with 3.0mmD hexagon platform
1000-26	For use with 3.0mmD hexagon platform
1000-01	For use with 3.5, 4.5 & 5.7mmD hexagon platforms
1000-06	For use with 3.5, 4.5 & 5.7mmD hexagon platforms
1000-10	For use with 3.5, 4.5 & 5.7mmD hexagon platforms



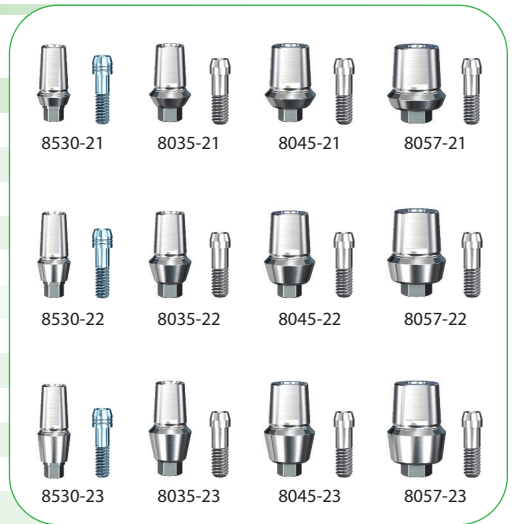


Straight Abutments, Snap-on Transfers & Lab Analogs

Straight Abutments

Includes Transfer, Comfort Cap & Fixation Screw with 1.25mmD Hex

Code	Platform	Collar Heights	Use Analog
8530-21	3.0mmD	1.0mm	8537
8530-22	3.0mmD	2.0mm	8537
8530-23	3.0mmD	3.0mm	8537
8035-21	3.5mmD	1.0mm	3047
8035-22	3.5mmD	2.0mm	3047
8035-23	3.5mmD	3.0mm	3047
8045-21	4.5mmD	1.0mm	3057
8045-22	4.5mmD	2.0mm	3057
8045-23	4.5mmD	3.0mm	3057
8057-21	5.7mmD	1.0mm	3065
8057-22	5.7mmD	2.0mm	3065
8057-23	5.7mmD	3.0mm	3065



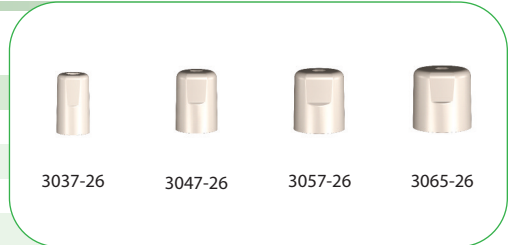
Straight Abutment Transfers

Code	Abutment Width
8537-02	3.7mmD
3047-02	4.7mmD
3057-02	5.7mmD
3065-02	6.5mmD



Straight Abutment Comfort Caps

Code	Abutment Width
3037-26	3.7mmD
3047-26	4.7mmD
3057-26	5.7mmD
3065-26	6.5mmD



Straight Abutment Analogs

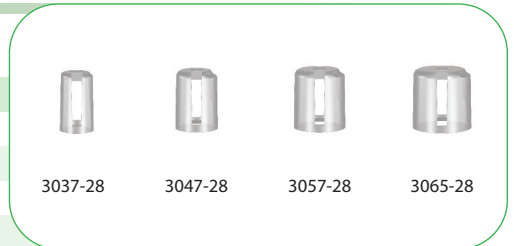
Includes Castable Coping

Code	Abutment Width
8537	3.7mmD
3047	4.7mmD
3057	5.7mmD
3065	6.5mmD



Straight Abutment Castable Coping

Code	Abutment Width
3037-28	3.7mmD
3047-28	4.7mmD
3057-28	5.7mmD
3065-28	6.5mmD



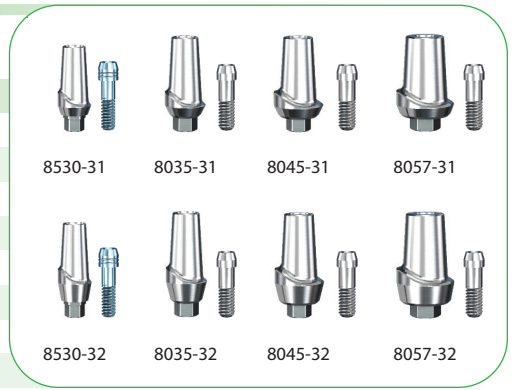


Straight & Angled Contoured, Titanium & Zirconia Abutments

Straight Titanium Contoured Abutments

Price includes Fixation Screw with 1.25mmD Hex

Code	Platform	Collar Heights	Replacement Screw
8530-31	3.0mmD	1mm	1000-20
8530-32	3.0mmD	2mm	1000-20
8035-31	3.5mmD	1mm	1000-01
8035-32	3.5mmD	2mm	1000-01
8045-31	4.5mmD	1mm	1000-01
8045-32	4.5mmD	2mm	1000-01
8057-31	5.7mmD	1mm	1000-01
8057-32	5.7mmD	2mm	1000-01



Angled Titanium Contoured Abutments

Price includes Fixation Screw with 1.25mmD Hex

Code	Platform	Collar Heights	Replacement Screw
8530-51	3.0mmD	.75mm	1000-20
8530-52	3.0mmD	2mm	1000-20
8035-51	3.5mmD	.75mm	1000-01
8035-52	3.5mmD	2mm	1000-01
8045-51	4.5mmD	.75mm	1000-01
8045-52	4.5mmD	2mm	1000-01
8057-51	5.7mmD	.75mm	1000-01
8057-52	5.7mmD	2mm	1000-01



0°, 8° & 15° Zirconia Contoured Abutments

Price includes Fixation Screw with 1.25mmD Hex

Code	Platform	Angulation	Collar Heights	Replacement Screw
8530-31C	3.0mmD	0°	1mm	1000-20
8530-32C	3.0mmD	0°	2mm	1000-20
8530-51-08C	3.0mmD	8°	1mm	1000-20
8530-52-08C	3.0mmD	8°	2mm	1000-20
8530-51-15C	3.0mmD	15°	1mm	1000-20
8530-52-15C	3.0mmD	15°	2mm	1000-20
8530-30CB	3.0mmD	-	.5mm	1000-20

Code	Platform	Angulation	Collar Heights	Replacement Screw
8035-31C	3.5mmD	0°	1mm	1000-01
8035-32C	3.5mmD	0°	2mm	1000-01
8035-51-08C	3.5mmD	8°	1mm	1000-01
8035-52-08C	3.5mmD	8°	2mm	1000-01
8035-51-15C	3.5mmD	15°	1mm	1000-01
8035-52-15C	3.5mmD	15°	2mm	1000-01
8035-30CB	3.5mmD	-	.5mm	1000-01

Code	Platform	Angulation	Collar Heights	Replacement Screw
8045-31C	4.5mmD	0°	1mm	1000-01
8045-32C	4.5mmD	0°	2mm	1000-01
8045-51-08C	4.5mmD	8°	1mm	1000-01
8045-52-08C	4.5mmD	8°	2mm	1000-01
8045-51-15C	4.5mmD	15°	1mm	1000-01
8045-52-15C	4.5mmD	15°	2mm	1000-01
8045-30CB	4.5mmD	-	.5mm	1000-01





Engaging & Non-Engaging, Gold, Plastic & Titanium Abutments

Straight Full-Contoured (HLA) Abutments

Price includes Fixation Screw with 1.25mmD Hex

Code	Platform	Collar Heights	Replacement Screw
HLA3-4	3.5mmD	0mm	1000-01
HLA3-5	3.5mmD	0mm	1000-01
HLA4-5	4.5mmD	0mm	1000-01
HLA4-6	4.5mmD	0mm	1000-01
HLA5-6	5.7mmD	0mm	1000-01
HLA5-7	5.7mmD	0mm	1000-01



Gold Engaging Cast-to Abutments

Price includes Fixation Screw with 1.25mmD Hex

Code	Platform	Collar Heights	Replacement Screw
8530-40	3.0mmD	1.0mm	1000-20
8035-40	3.5mmD	1.0mm	1000-01
8045-40	4.5mmD	1.0mm	1000-01
8057-40	5.7mmD	1.0mm	1000-01



Gold Non-Engaging Cast-to Abutments

Price includes Fixation Screw with 1.25mmD Hex

Code	Platform	Collar Heights	Replacement Screw
8530-41	3.0mmD	1.0mm	1000-20
8035-41	3.5mmD	1.0mm	1000-01
8045-41	4.5mmD	1.0mm	1000-01



Plastic Engaging Castable Abutments

Price includes Fixation Screw with 1.25mmD Hex

Code	Platform	Collar Heights	Replacement Screw
8035-44	3.5mmD	0mm	1000-01
8045-44	4.5mmD	0mm	1000-01
8057-44	5.7mmD	0mm	1000-01



Plastic Non-Engaging Castable Abutments

Price includes Fixation Screw with 1.25mmD Hex

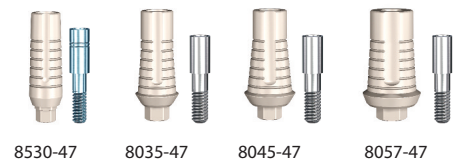
Code	Platform	Collar Heights	Replacement Screw
8530-46	3.0mmD	0mm	1000-20
8035-46	3.5mmD	0mm	1000-01
8045-46	4.5mmD	0mm	1000-01
8057-46	5.7mmD	0mm	1000-01



Plastic Engaging Temporary Abutments

Price includes Fixation Screw with 1.25mmD Hex

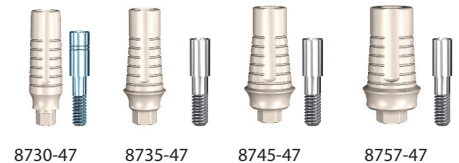
Code	Platform	Collar Heights	Replacement Screw
8530-47	3.0mmD	1.0mm	1000-41
8035-47	3.5mmD	1.0mm	1000-06
8045-47	4.5mmD	1.0mm	1000-06
8057-47	5.7mmD	1.0mm	1000-06



Plastic Engaging Temporary Abutments - Concave Profile

Price includes Fixation Screw with 1.25mmD Hex

Code	Platform	Collar Heights	Replacement Screw
8730-47	3.0mmD	1.0mm	1000-41
8735-47	3.5mmD	1.0mm	1000-06
8745-47	4.5mmD	1.0mm	1000-06
8757-47	5.7mmD	1.0mm	1000-06



Titanium Non-Engaging Temporary Abutments

Price includes Fixation Screw with 1.25mmD Hex

Code	Platform	Collar Heights	Replacement Screw
8530-49	3.0mmD	1.0mm	1000-20
8035-49	3.5mmD	1.0mm	1000-01
8045-49	4.5mmD	1.0mm	1000-01
8057-49	5.7mmD	1.0mm	1000-01



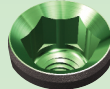


Selection Chart: Overdenture & Screw-Retained Restorations

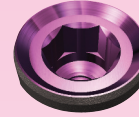
3.0mmD Platform



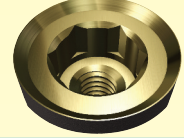
3.5mmD Platform



4.5mmD Platform



5.7mmD Platform



Screw-Receiving Overdenture Abutments (*Includes Transfer & Comfort Cap)

Overdenture Abutments



8530-61
8530-62
8530-64



8035-61
8035-62
8035-64



8035-64-15
8035-64-30



8045-61
8045-62
8045-64



8045-64-15
8045-64-30



8057-61
8057-62
8057-64

Screw-Receiving Overdenture Abutment Transfer, Analog & Comfort Cap

OD Abutment Comfort Cap Transfer & Analogs



*4000-13



*1000-68



1000-61



1000-62



1000-63

Overdenture Screw-Retained Copings

Overdenture Abutment Components



1000-64

Gold



1000-65

Titanium



1000-66

Plastic



1000-67

Gold/Plastic



1000-69

Titanium

Ball Abutments (**Includes Transfer & Comfort Cap)

Ball Abutments



8035-72
8035-74



8045-72
8045-74



8057-72
8057-74

Ball Attachments

Ball Abutment Components



**1000-87



**1000-84



1000-85



1000-81



1000-82



1000-88



1000-83



1000-86

GPS Abutments (***)Includes Transfer, Abutment Housing Kit & Comfort Cap

GPS Abutments



8530-91
8530-92
8530-93
8530-94



8035-91
8035-92
8035-93
8035-94
8035-95



8035-94-15
8035-94-30



8045-91
8045-92
8045-93
8045-94
8045-95



8045-94-15
8045-94-30



8057-91
8057-92
8057-93
8057-94
8057-95

GPS Attachments

GPS Abutment Components



***4500-26



***1000-94



1000-95



1000-92C



1000-92G



1000-92R



1000-92E



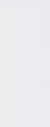
1000-93



1000-98S



1000-98SI



1000-91



***1000-91W



1000-96

Abutments are compatible with Zimmer, BioHorizons (Internal) and MIS Implants with 3.5mm, 4.5mmD and 5.7mmD prosthetic platforms



Screw-Receiving, Ball & GPS Abutments

Screw-Receiving Overdenture Abutments

Includes Transfer & Comfort Cap - requires 1.25mmD Hex Tool

Platform	Collar Heights		
	1mmL	2mmL	4mmL
3.0mmD	-	8530-62	8530-64
3.5mmD	8035-61	8035-62	8035-64
4.5mmD	8045-61	8045-62	8045-64
5.7mmD	8057-61	8057-62	8057-64



Ball Abutments

Includes Transfer & Comfort Cap - requires 1.25mmD Hex Tool

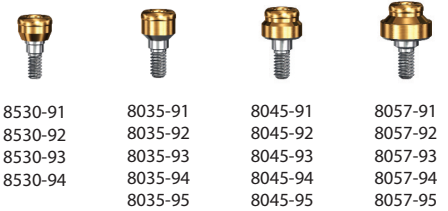
Platform	Collar Heights	
	2mmL	4mmL
3.5mmD	8035-72	8035-74
4.5mmD	8045-72	8045-74
5.7mmD	8057-72	8057-74



GPS Abutments

Includes Transfer, Comfort Cap, Metal Housing, White Male Liner & Spacer - requires 1.25mmD Hex Tool

Platform	Collar Heights				
	1mmL	2mmL	3mmL	4mmL	5mmL
3.0mmD	8530-91	8530-92	8530-93	8530-94	-
3.5mmD	8035-91	8035-92	8035-93	8035-94	8035-95
4.5mmD	8045-91	8045-92	8045-93	8045-94	8045-95
5.7mmD	8057-91	8057-92	8057-93	8057-94	8057-95



Screw-Receiving Angled Overdenture Abutments

Includes Transfer & Comfort Cap - requires 1.25mmD & 2.5mmD Hex Tool

Code	Platform	Description
8035-64-15	3.5mmD	15° Angled Abutment
8045-64-15	4.5mmD	15° Angled Abutment
8035-64-30	3.5mmD	30° Angled Abutment
8045-64-30	4.5mmD	30° Angled Abutment



Angled GPS Abutments

Includes Transfer, Comfort Cap, Metal Housing, White Male Liner & Spacer - requires 1.25mmD Hex Tool

Code	Platform	Description
8035-94-15	3.5mmD	15° Angled Abutment
8045-94-15	4.5mmD	15° Angled Abutment
8035-94-30	3.5mmD	30° Angled Abutment
8045-94-30	4.5mmD	30° Angled Abutment



Replacement Tops for Angled Abutments

Includes Transfer & Comfort Cap

Code	Description
1000-60	Replacement Screw Top for Angled Base [Requires 2.5mmD Hex Tool]
1000-70	Replacement Ball Top for Angled Base [Requires 1.25mmD Hex Tool]
1000-90	Replacement GPS Top for Angled Base [Requires 1.25mmD Hex Tool]



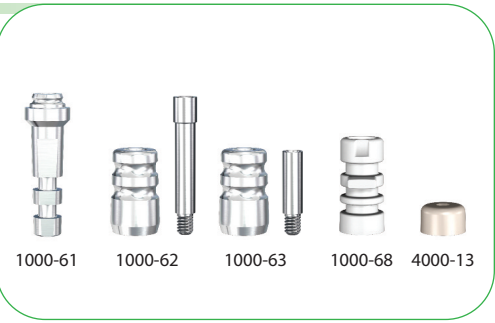


Ancillary Components for Overdenture & Screw-Retained Restorations

Screw-Receiving Overdenture Abut. Comfort Cap, Transfers & Analog

Screws require
1.25mmD Hex Tool

Code	Prosthetic Platform	Description
1000-61	5.0mmD	Aluminum Analog
1000-62	5.0mmD	Open-Tray Transfer plus Fixation Screw
1000-63	5.0mmD	Closed-Tray Transfer plus Fixation Screw
1000-68	5.0mmD	Plastic Abutment Transfer - 2ea
4000-13	5.0mmD	Plastic Comfort Cap - 2ea
1000-14	-	Replacement Open-Tray Fixation Screw - 2ea
1000-15	-	Replacement Closed-Tray Fixation Screw - 2ea



Overdenture Screw-Retained Abutment Components

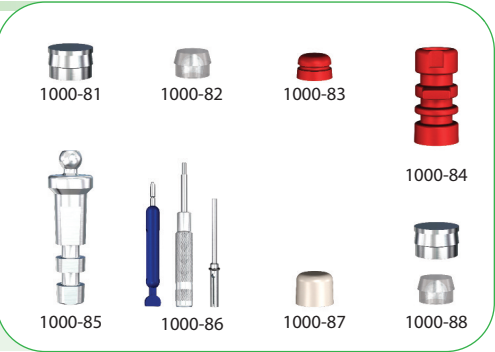
Includes Fixation Screw [1000-05]
with 1.25mmD Hex

Code	Prosthetic Platform	Description
1000-05	-	Coping Replacement Fixation Screw - 2ea
1000-64	5.0mmD	Gold Coping
1000-65	5.0mmD	Titanium Coping
1000-66	5.0mmD	Plastic Coping
1000-67	5.0mmD	Gold & Plastic Coping
1000-69	5.0mmD	Titanium Temporary Coping



Ball Abutment Components

Code	Description
1000-81	Ball Abutment Housing - 2ea
1000-82	Nylon Liner - 2ea
1000-83	Nylon Liner Transfer - 2ea
1000-84	Ball Abutment Transfer - 2ea
1000-85	Ball Abutment Analog
1000-86	Ball Abutment Tools
1000-87	Ball Abutment Comfort Cap - 2ea
1000-88	Ball Abutment Housing & Nylon Liner



GPS Abutment Transfer, Analogs and Alignment Tools

Code	Description
1000-94	Impression Coping - 2ea
1000-95	Abutment Analog 4mmD - 2ea
1000-97	Abutment Parallel Post - 4ea
4500-26	Comfort Cap - 2ea
1000-99	Plastic Abutment Angle Measure Guide



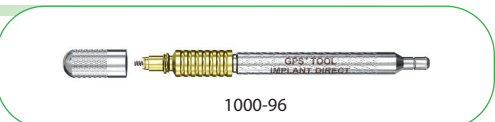
GPS Abutment Components

Code	Retention Force	Description
1000-92W	5.0lbs	Internal Replacement Male White - 4ea
1000-92P	3.0lbs	Internal Replacement Male Pink - 4ea
1000-92B	1.5lbs	Internal Replacement Male Blue - 4ea
1000-92C	4.5lbs	External Replacement Male Clear - 4ea
1000-92G	3.0lbs	External Replacement Male Green - 4ea
1000-92E	2.0lbs	External Replacement Male Orange - 4ea
1000-92R	1.0lb	External Replacement Male Red - 4ea
1000-91	-	GPS Housing Kit - 1ea
1000-91W	-	GPS Housing Kit w/ White Internal Male - 1ea
1000-93	-	Black Processing Male - 4ea
1000-98SI	Assorted	Internal Processing Cap/Male Kit - 1ea
1000-98S	Assorted	External Processing Cap/Male Kit - 1ea



GPS Instrumentation

Code	Description
1000-96	Core Tool - Male Removal & Seating Tool





Tapered Hex Tools

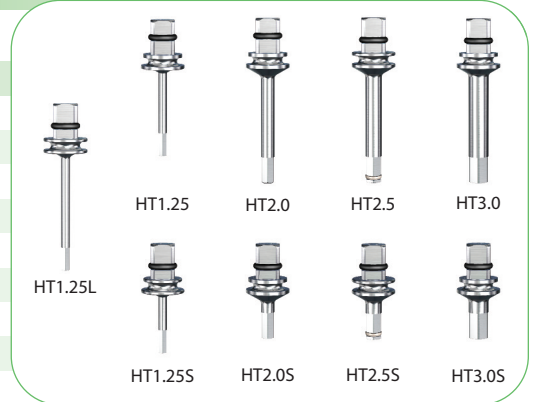
Code	Description
THT1.25	1.25mmD Tapered Hex Tool Long
THT1.25S	1.25mmD Tapered Hex Tool Short



Straight Hex Tools

Square connection for use with Ratchet or Torque Wrench

Code	Description
HT1.25L	1.25mmD Straight Hex Tool Extra Long (For use with Torque Wrench)
HT1.25	1.25mmD Straight Hex Tool Long (For use with Torque Wrench)
HT1.25S	1.25mmD Straight Hex Tool Short (For use with Torque Wrench)
HT2.0	2.0mmD Hex Tool Long
HT2.0S	2.0mmD Hex Tool Short
HT2.5	2.5mmD Hex Tool Long (with retentive O-ring)
HT2.5S	2.5mmD Hex Tool Short (with retentive O-ring)
HT3.0	3.0mmD Hex Tool Long
HT3.0S	3.0mmD Hex Tool Short



Hex Drills

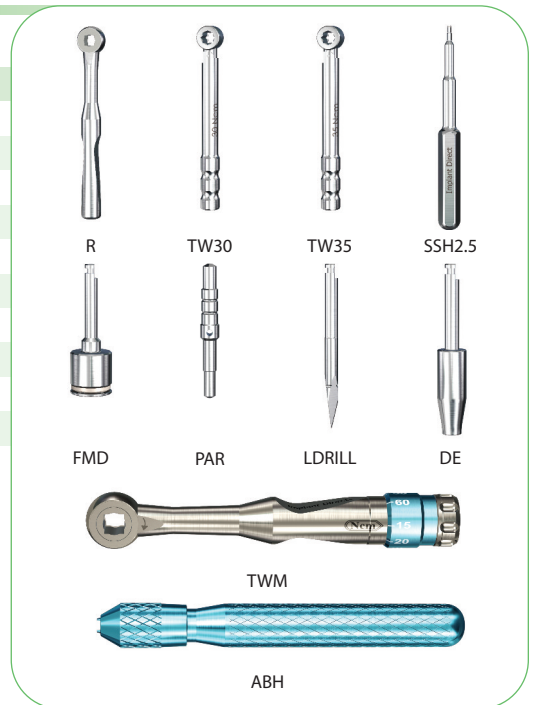
Latch head connection for use with Surgical Motor

Code	Description
HD1.25	1.25mmD Hex Drill
HD2.0	2.0mmD Hex Drill
HD2.5	2.5mmD Hex Drill (with retentive O-ring)
HD3.0	3.0mmD Hex Drill



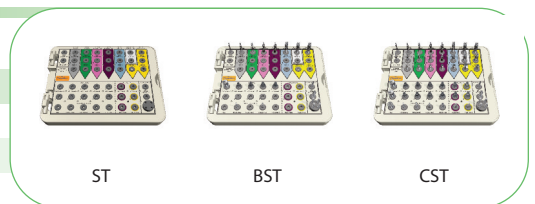
Ancillary Instruments

Code	Description
R	Ratchet
TW30	30Ncm Torque Wrench
TW35	35Ncm Torque Wrench
SSH2.5	2.5mmD Stainless Steel Handle (with retentive O-ring)
FMD	Fixture Mount Drill
PAR	Paralleling Tool 2.8/2.3
LDRILL	Locator Drill
DE	Drill Extender
TWM	Multi-Setting Torque Wrench (15, 20, 25, 30, 35, 40, 45, 50 & 60Ncm)
ABH	Analog Holder



Surgical Trays

Code	Description
ST	Empty Surgical Kit for Legacy System Implants
BST	Basic Surgical Kit for Legacy System Implants
CST	Complete Surgical Kit for Legacy System Implants





3.2mmD Implants

Code	Description
SD2.3	2.3/2.0mmD Step Drill with 6-16 markings
SD2.3S	2.3/2.0mmD Step Drill with 6-10 markings
SD2.8	2.8/2.3mmD Step Drill with 6-16 markings
SD2.8S	2.8/2.3mmD Step Drill with 6-10 markings
CBD3.2	Cortical Bone Drill for 3.0 and 3.2mmD Implants



3.7mmD Implants

Code	Description
SD3.4	3.4/2.8mmD Step Drill with 6-16 markings
SD3.4S	3.4/2.8mmD Step Drill with 6-10 markings
CBD3.7	Cortical Bone Drill for 3.7mmD Implants



4.2mmD Implants

Code	Description
SD3.8	3.8/3.4mmD Step Drill with 6-16 markings
SD3.8S	3.8/3.4mmD Step Drill with 6-10 markings
CBD4.2	Cortical Bone Drill for 4.2mmD Implants



4.7mmD Implants

Code	Description
SD4.4	4.4/3.8mmD Step Drill with 6-16 markings
SD4.4S	4.4/3.8mmD Step Drill with 6-10 markings
CBD4.7	Cortical Bone Drill for 4.7mmD Implants



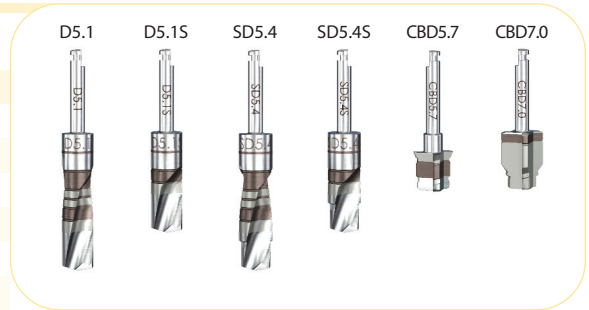
5.2mmD Implants

Code	Description
SD4.8	4.8/4.4mmD Step Drill with 6-16 markings
SD4.8S	4.8/4.4mmD Step Drill with 6-10 markings
CBD5.2	Cortical Bone Drill for 5.2mmD Implants



5.7 and 7.0mmD Implants

Code	Description
D5.1	5.1mmD Straight Drill with 6-16 markings
D5.1S	5.1mmD Straight Drill with 6-10 markings
SD5.4	5.4/4.8mmD Step Drill with 6-16 markings
SD5.4S	5.4/4.8mmD Step Drill with 6-10 markings
CBD5.7	Cortical Bone Drill for 5.7mmD Implants
CBD7.0	Cortical Bone Drill for 7.0mmD Implants





Drill Sequence

3.2mmD Straight /Tapered Implant

3.0/3.2



Soft Bone Final



SD2.3
2.3/2.0mmD

Dense Bone Final



SD2.8
2.8/2.3mmD

Optional
Bone Contour



CBD3.2

3.7mmD Straight /Tapered Implant

3.5/3.7



SD2.3
2.3/2.0mmD

Soft Bone Final



SD2.8
2.8/2.3mmD

Dense Bone Final



SD3.4
3.4/2.8mmD

Optional
Bone Contour



CBD3.7

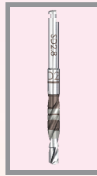
4.2mmD Straight /Tapered Implant

3.5/4.2



SD2.3
2.3/2.0mmD

Optional



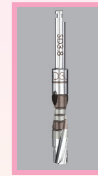
SD2.8
2.8/2.3mmD

Soft Bone Final



SD3.4
3.4/2.8mmD

Dense Bone Final



SD3.8
3.8/3.4mmD

Optional
Bone Contour



CBD4.2

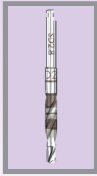
4.7mmD Straight /Tapered Implant

4.5/4.7



SD2.3
2.3/2.0mmD

Optional



SD2.8
2.8/2.3mmD



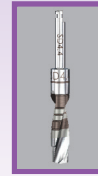
SD3.4
3.4/2.8mmD

Soft Bone Final



SD3.8
3.8/3.4mmD

Dense Bone Final



SD4.4
4.4/3.8mmD

Optional
Bone Contour



CBD4.7

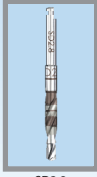
5.2mmD Straight /Tapered Implant

4.5/5.2

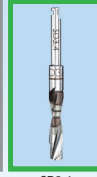


SD2.3
2.3/2.0mmD

Optional



SD2.8
2.8/2.3mmD



SD3.4
3.4/2.8mmD

Optional



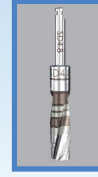
SD3.8
3.8/3.4mmD

Soft Bone Final



SD4.4
4.4/3.8mmD

Dense Bone Final



SD4.8
4.8/4.4mmD

Optional
Bone Contour



CBD5.2

5.7mmD & 7.0mmD Straight /Tapered Implant

5.7/5.7

5.7/7.0

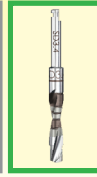


SD2.3
2.3/2.0mmD

Optional



SD2.8
2.8/2.3mmD



SD3.4
3.4/2.8mmD

Optional



SD3.8
3.8/3.4mmD



SD4.4
4.4/3.8mmD

Optional



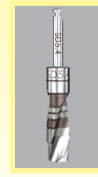
SD4.8
4.8/4.4mmD

Soft Bone Final



D5.1
5.1mmD

Dense Bone Final



SD5.4
5.4/4.8mmD

Optional
Bone Contour
for 5.7mmD



CBD5.7

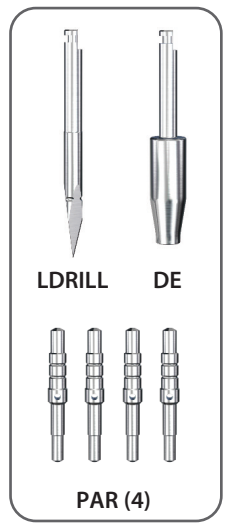
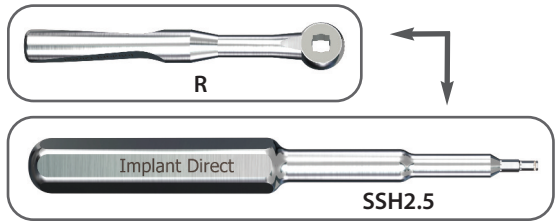
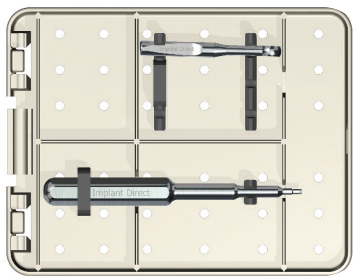
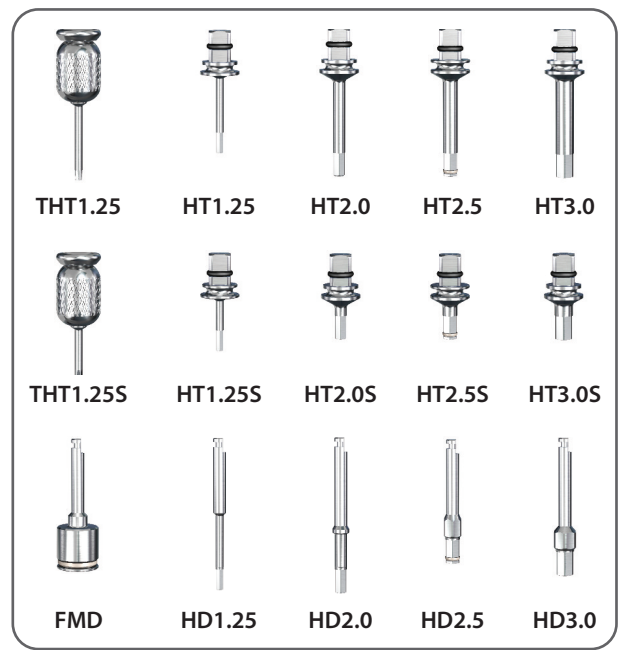
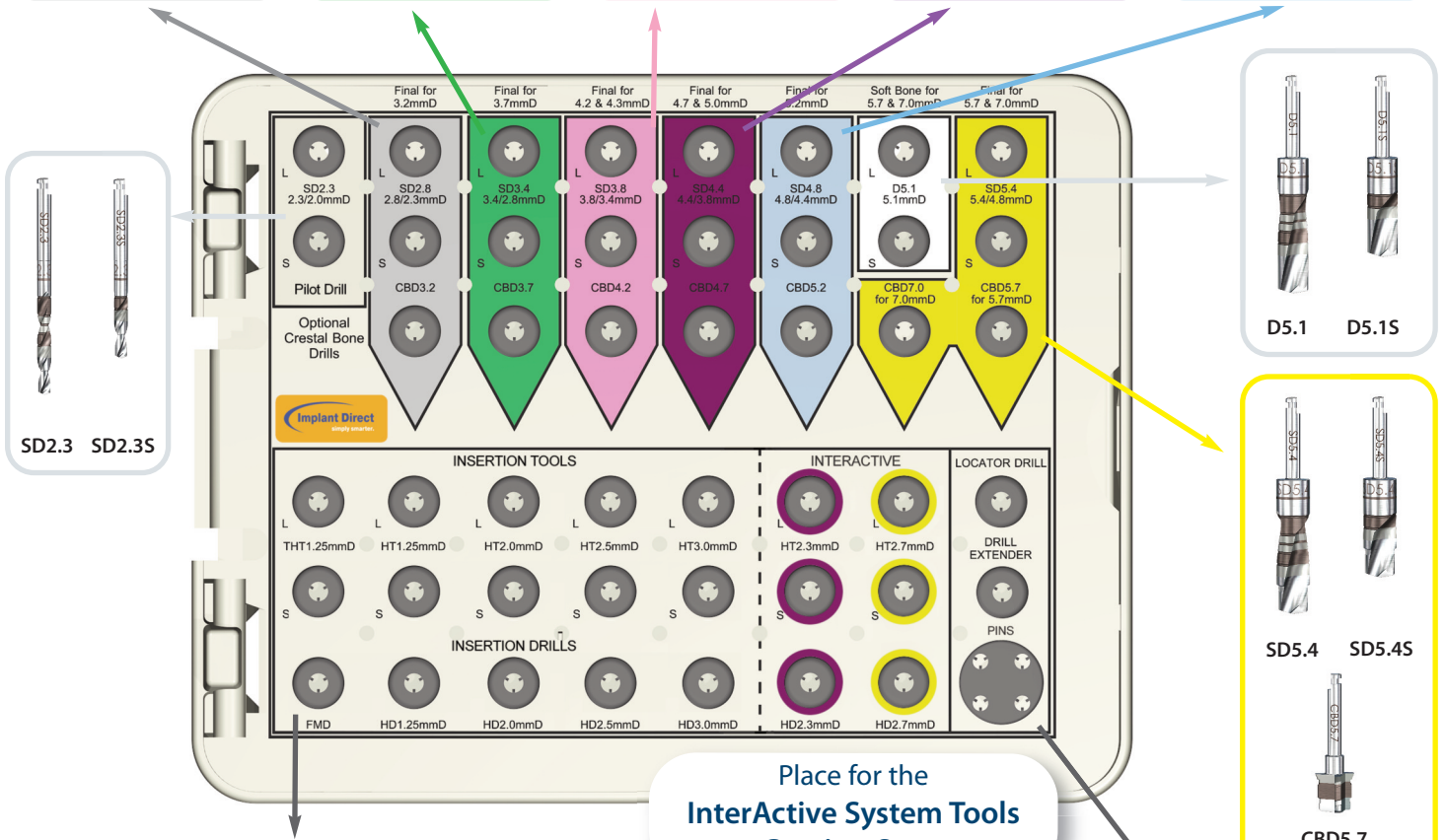
Optional
Bone Contour
for 7.0mmD



CBD7.0

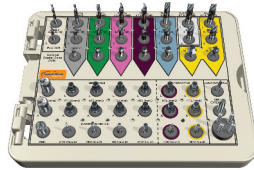


Complete Surgical Tray Contents





Lid



Inside



Empty Tray

Surgical Tray Contents		Complete Kit	Basic Kit	Conversion Kit
Code	Description			
ST	Empty Surgical Tray	X	X	X
SD2.3	2.3/2.0mmD Step Drill-Long	X	X	
SD2.3S	2.3/2.0mmD Step Drill-Short	X		
SD2.8	2.8/2.3mmD Step Drill-Long	X	X	
SD2.8S	2.8/2.3mmD Step Drill-Short	X		
CBD3.2	3.2mmD Cortical Drill	X		X
SD3.4	3.4/2.8mmD Step Drill-Long	X	X	
SD3.4S	3.4/2.8mmD Step Drill-Short	X		
CBD3.7	3.7mmD Cortical Drill	X		X
SD3.8	3.8/3.4mmD Step Drill-Long	X	X	X
SD3.8S	3.8/3.4mmD Step Drill-Short	X		X
CBD4.2	4.2mmD Cortical Drill	X		X
SD4.4	4.4/3.8mmD Step Drill-Long	X	X	
SD4.4S	4.4/3.8mmD Step Drill-Short	X		
CBD4.7	4.7mmD Cortical Drill	X		X
SD4.8	4.8/4.4mmD Step Drill-Long	X	X	X
SD4.8S	4.8/4.4mmD Step Drill-Short	X		X
CBD5.2	5.2mmD Cortical Drill	X		X
D5.1	5.1mmD Straight Drill-Long	X	X	
D5.1S	5.1mmD Straight Drill-Short	X		
SD5.4	5.4/4.8mmD Step Drill-Long	X	X	
SD5.4S	5.4/4.8mmD Step Drill-Short	X		
CBD5.7	5.7mmD Cortical Drill	X		X
Hex Tools				
THT1.25	1.25mmD Tapered Hex Tool-Long	X	X	
THT1.25S	1.25mmD Tapered Hex Tool-Short	X		
HT1.25	1.25mmD Straight Hex Tool-Long	X	X	
HT1.25S	1.25mmD Straight Hex Tool-Short	X		
HT2.0	2.0mmD Straight Hex Tool-Long	X	X	
HT2.0S	2.0mmD Straight Hex Tool-Short	X		
HT2.5	2.5mmD Straight Hex Tool-Long	X	X	
HT2.5S	2.5mmD Straight Hex Tool-Short	X		
HT3.0	3.0mmD Straight Hex Tool-Long	X	X	
HT3.0S	3.0mmD Straight Hex Tool-Short	X		
HD1.25	1.25mmD Hex Drill	X	X	
HD2.0	2.0mmD Hex Drill	X		X
HD2.5	2.5mmD Hex Drill	X	X	
HD3.0	3.0mmD Hex Drill	X		X
Ancillary Instrumentation				
FMD	Fixture Mount Drill	X		
LDRILL	Locator Drill	X	X	
DE	Drill Extender	X	X	
R	Ratchet	X	X	
PAR (x4)	Paralleling Tool 2.8/2.3	X	X	
SSH2.5	2.5mmD Stainless Steel Handle	X		

A Legacy of Innovation



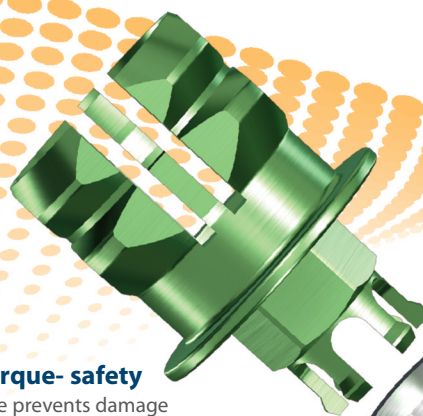
Legacy4 implant combines the popular Legacy2 implant body with a revolutionary two-piece fixture-mount for precision transfers and prosthetic simplicity.



Legacy™4 Implant



All-in-1 Packaging includes implant, fixture-mount, abutment, transfer, cover screw & healing collar



Square top detaches with impression for **metal to metal transfer accuracy**

Torque- safety
feature prevents damage to implant interface

Two-Piece fixture-mount (patent pending) with **preparable abutment**

Concave transgingival profile

1982 Core-Vent® Implant & Abutment System
Pat. #4,431,416, #4,645,453, #4,488,875, #4,758,161

1986 Screw-Vent® – First Internal Connection
Pat. #4,960,381

1987 Micro-Vent® – First Small Diameter Implant
Pat. #5,061,181

1990 Sterile Fixture-Mount Packaging Pat. #5,062,800

1994 Friction-Fit Internal Connection Pat. #5,334,024
Friction-Fit External Connection Pat. #5,433,606

1995 Tapered Implant with Surgical Protocol for Stability
Pat. #5,427,527

1996 Selective Surface & Dual Transition Surface Treatments
Pat. #5,571,017, #5,885,079

1999 Advent® One-Piece Implant for Edentulous Jaws
Pat. #5,989,028

2006 Application-Specific Spectra-System® of Implants
Micro-threads Pat. #7,677,891, Healing Collar Packaging Pat. #7,396,231,
One-Piece Multi-unit Implant and Abutment Pat. #7,699,613, #8,118,596
Multi-Functional Fixture-Mount Pat. #7,785,107

2007 RePlant® System with Tri-lobe Compatibility Pat #7,108,510

2008 SwishPlant™ with Octagon/Square Connection
Patent Pending

2009 GoDirect® One-Piece Implant for Overdenture Attachment
Patent Pending

2010 GPS™ Abutment with Internal Resilient Overdenture Attachment
Patent Pending

2012 Legacy4 Implant with Two-Piece Fixture-Mount Packaging
Patent Pending

Quadruple-lead micro-threads

Progressively deeper buttress threads

Three long cutting grooves



Over 30 Years of Implant Innovation

Gerald A. Niznick, DMD, MSD
President & CEO
Implant Direct Int'l

