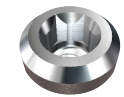


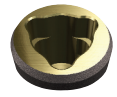
Transforming the Implant Industry

Innovative Designs, Highest Quality, Broadest Product Line, Lowest Prices, Online Ordering, Technical Support and All-in-1 Packaging

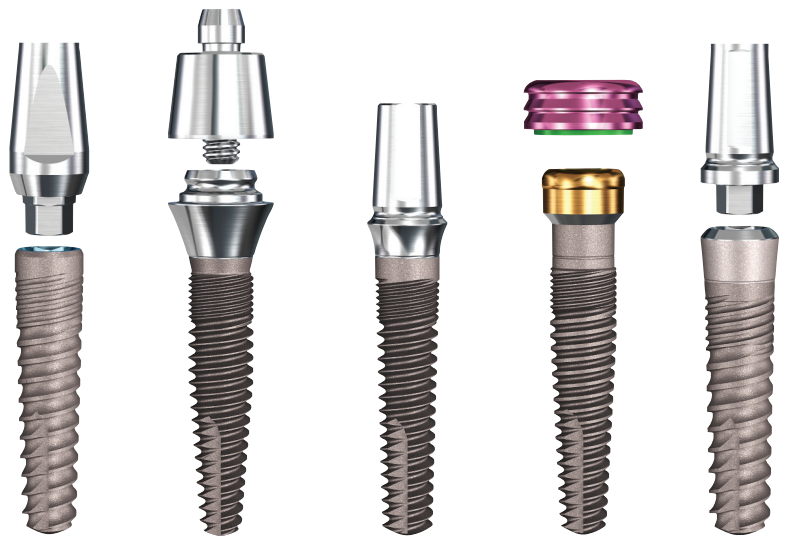
Narrow One- and Two-Piece Implants



ScrewPlant®
Internal Hex
Connection



ReActive®
Internal Tri-Lobe
Connection



Legacy3
3.2mmD

ScrewIndirect®
3.0mmD

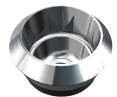
ScrewDirect®
3.0mmD

GoDirect™
3.0mmD

SwishPlant
3.3mmD



Legacy™3
Original Conical
Connection



SwishPlus™
Internal Octagon
Connection

Implant Prosthetics



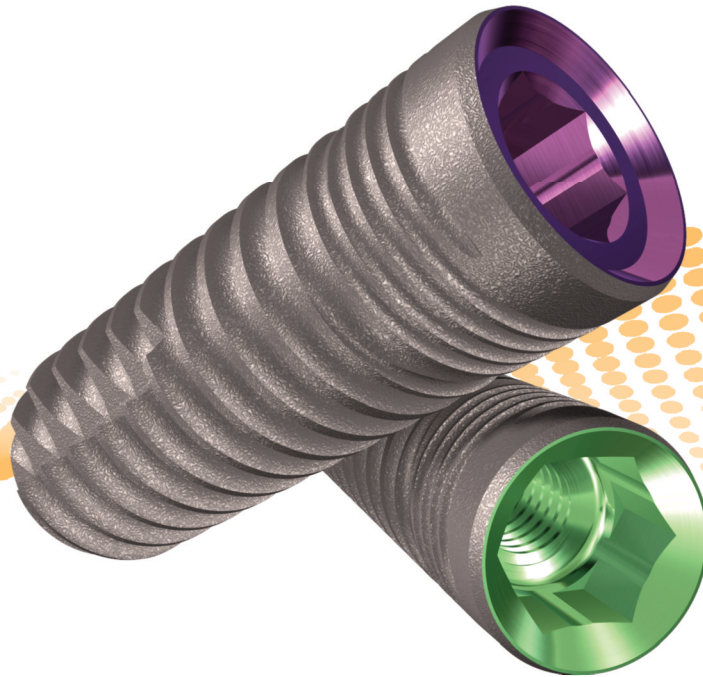
www.implantdirect.com



Designed For Success,



Cover Screw Healing Collar



Customer Service & Technical Support
online, over the phone, or in your office

Reality Check
Zimmer Customers
Save \$433 with Legacy3

Legacy™3 Implant

All-in-1 Packaging includes implant, abutment, transfer, cover screw & healing collar
\$200 vs \$633¹ from Zimmer Dental



Legacy™ Implant System Advantages:

Industry-Compatible Internal Hex

Prosthetic compatibility with Zimmer Dental Screw-Vent®, BioHorizons® & MIS implants

Surgical Compatibility with Tapered Screw-Vent®

No need to change surgical protocol or tools

Three Implant Designs & Packaging Options

Allows for selection based on price, packaging or thread design

Legacy1: \$150 includes cover screw, healing collar & carrier

Legacy2: \$175 includes cover screw, healing collar & temporary abutment/transfer

Legacy3: \$200 includes cover screw, healing collar & preparable abutment/transfer

Micro-Threads

Reduce crestal stress for improved initial stability

Widest Range of Dimensional Options

The entire Legacy system includes seven implant diameters

(3.2, 3.7, 4.2, 4.7, 5.2, 5.7, 7.0mm) & six implant lengths (6, 8, 10, 11.5, 13, 16mm)

Our price	\$85	\$100	\$100	\$100	\$120	\$120	\$40	\$112	\$100	\$120	\$100	\$120
Zimmer Dental*	\$162	\$220	\$175	\$190	\$216	\$245	\$67	\$179	\$166	N/A	\$217	\$297

Legacy1

Standard "V" Threads
Matches Screw-Vent®



Legacy2

Aggressive Buttress
Threads for Increased
Stability



Legacy3

Progressive Buttress
Threads for Increased
Surface



Intro Offer: Make the switch & receive three FREE implants.³

Price comparisons based upon US list prices as of January 2013. All trademarks are property of their respective companies.

¹US list price for Tapered Screw-Vent with micro grooves, healing collar & straight abutment

²US list price for NobelActive with cover screw, impression coping & abutment

³Terms and conditions apply.

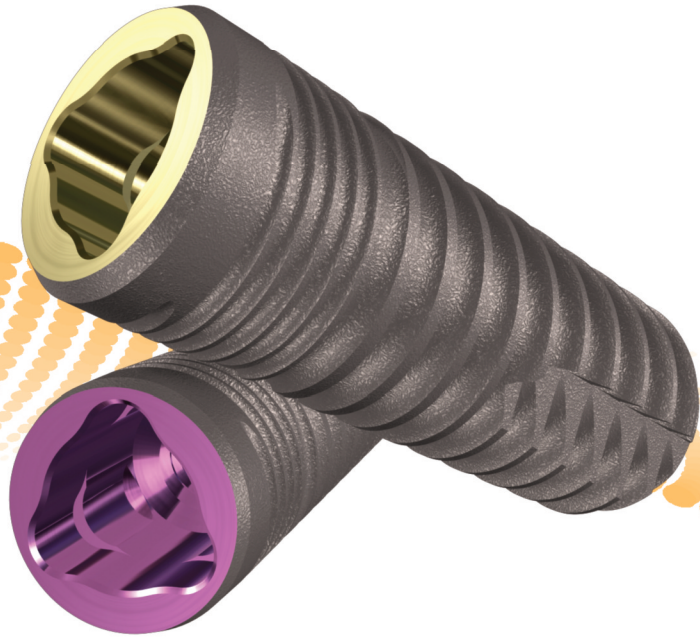
⁴Implant Dent 2011; 20: 13-19 (n190); ⁵PSN-EAO09PSI-346 (n373) Reports available at www.implantdirect.com

Packaged For Value



Five Year Warranty³

98% Success in Sinus Elevation Cases⁴
99% Success in Immediate Load Maxillary Cases⁵



Cover Screw



ReActive™ Implant

All-in-1 Packaging includes implant, abutment, transfer & cover screw
\$200 vs \$718² from Nobel Biocare™

Reality Check
Nobel Customers
Save \$518 with ReActive

RePlant®
Body Dimensions Match NobelReplace™

RePlus®
Body Taper for Bone Expansion

ReActive™
Buttress Threads for Increased Surface



RePlant® Implant System Advantages:

Nobel Biocare-Compatible Internal Tri-Lobe
Prosthetic compatibility with Nobel Biocare's NobelReplace™ Implant

Surgical Compatibility with RePlant & NobelReplace™
No need to change surgical protocol or tools

Three Implant Designs & Packaging Options
Allows for selection based on price, packaging or thread design

- RePlant:** \$175 includes cover screw & temporary abutment/transfer
- RePlus:** \$200 includes cover screw & "snappy" abutment/transfer
- ReActive:** \$200 includes cover screw & preparable abutment/transfer

Micro-Threads
Reduce crestal stress for improved initial stability

Coronal Bevel on RePlus & ReActive
Allows for use of platform switching technology

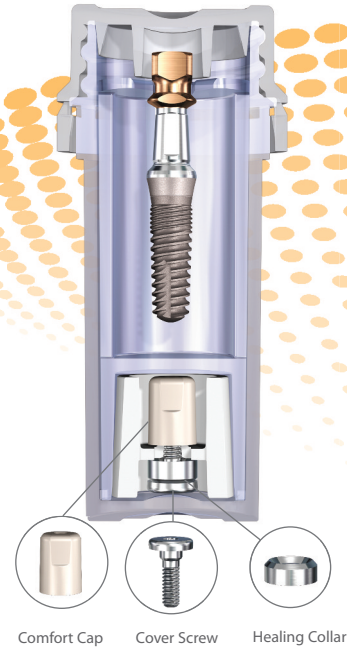
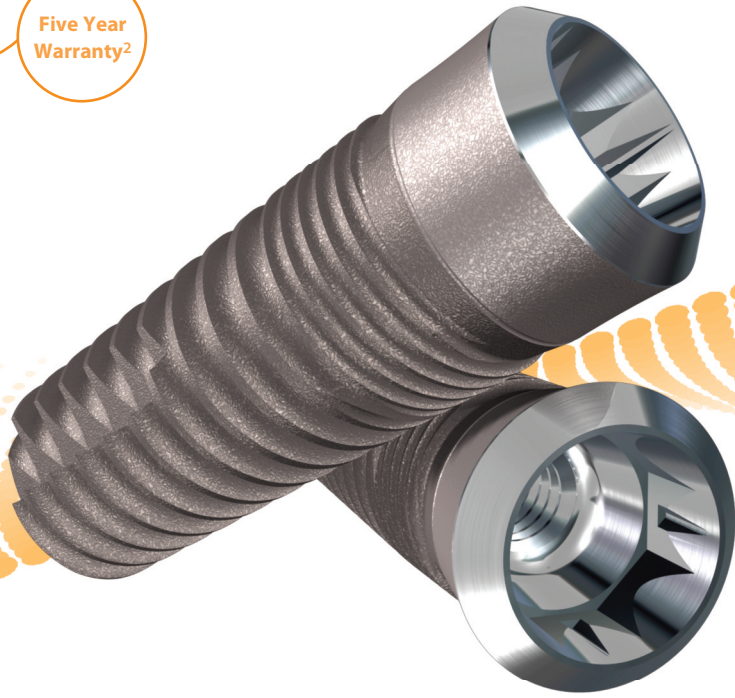
Titanium Alloy
Offers superior strength to pure titanium

Our price	\$85	\$100	\$100	\$100	\$120	\$120	\$40	\$112	\$100	\$120	\$100	\$120
Nobel Biocare™	\$194	\$192	\$175	\$232	\$223	\$295	\$75	\$225	\$156	N/A	\$236	\$282

Designed For Success, Packaged For Value

Customer Service & Technical Support online, over the phone, or in your office

Five Year Warranty²



Reality Check
Straumann Customers
Save \$537 with SwishPlant

SwishPlant™ Implant

All-in-1 Packaging includes implant, straight abutment/transfer, cover screw, healing collar & comfort cap
\$200 vs \$737¹ from Straumann

Swish™ Implant System Advantages:

Internal Octagon (Niznick US Pat. #4,960,381 Licensed to Straumann)
Prosthetic compatibility with Straumann's Tissue-Level implants (Standard, Standard Plus and Tapered Effect)
Internal square broached in flats of octagon for fixture-mount engagement (Pat. Pend.)

Two Implant Designs & Packaging Options

Allows for selection based on price, packaging or thread design

SwishPlus³: \$150 includes cover screw, healing collar & carrier compatible with Straumann tool & standard ratchet

- 1 2mm neck half textured for tissue-level or esthetic placement
- 2 Micro-grooves for improved tissue attachment & reduced stress
- 3 Progressively-deeper single-lead threads for increased surface area & complete surgical compatibility
- 4 Self-tapping groove for increased initial stability
- 5 Tapered apical end to initiate self-tapping

SwishPlant: \$200 includes cover screw, healing collar, comfort cap & straight abutment/transfer

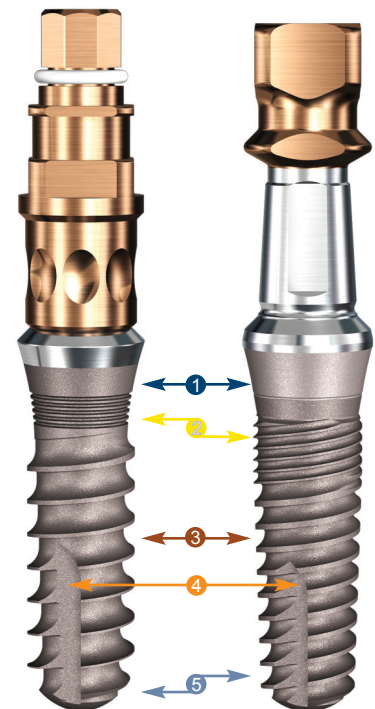
- 1 2mm neck lightly textured for bone- or tissue-level placement
- 2 Micro-threads for improved tissue attachment, reduced stress & increased stability
- 3 Progressively-deeper double-lead threads for increased surface area & faster insertion
- 4 Self-tapping groove for increased initial stability
- 5 Tapered body for soft bone expansion

SwishPlus

Straight with Micro-Grooves & Straumann Threads

SwishPlant

Tapered with Micro-Threads & Double-Lead Threads



	Solid Abutment Kit	Narrow Abutment	Straight Snap-On	Straight Contoured	15° Angled Contoured	Gold/Plastic	Zirconia/Ti Abutment	Angled Zirconia/Ti Abutment	Plastic Temporary Abutment	Ball Attachment	GPS™ Attachment	Angled GPS™ Attachment	Multiple-Unit w/Cap & Transfer	Straight	Angled
Our price	\$115	\$100	\$100	\$100	\$100	\$120	\$120	\$120	\$40	\$112	\$100	\$120	\$100	\$120	\$120
Straumann [®]	\$250	\$202	\$202	\$210	\$185	\$185	\$374 ⁴	\$374 ⁴	\$70	\$297	\$196	N/A	\$191	N/A	N/A

Intro Offer: Make the switch & receive three FREE implants?

Price comparisons based upon US list prices as of January 2013. All trademarks are property of their respective companies.

¹US list price for SLActive Tapered Effect implant, closure screw, healing abutment, solid abutment, transfer and comfort cap.

²Terms and conditions apply.

³System Variation: 3.3mmD & 5.7mmD SwishPlus are tapered; 3.3mmD also has SwishPlant threads.

⁴Comparison based upon Straumann's CARES Custom Zirconia Abutment. Price varies depending upon the laboratory.

Customer Service & Technical Support online, over the phone, or in your office

Five Year Warranty²

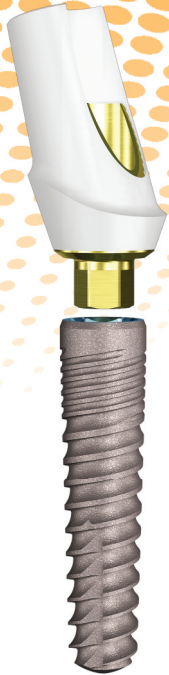
Taking Mini-Implants to a New Dimension



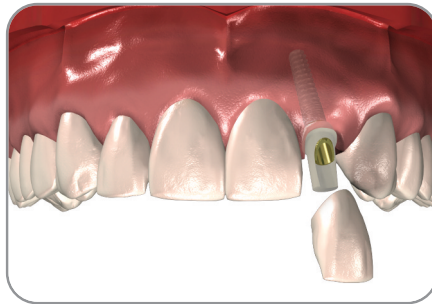
Legacy™3
3.2mmD

1- and 2-piece small diameter implants providing the simplicity and cost savings of mini-implants with the strength, surface area and restorative options of conventional implants

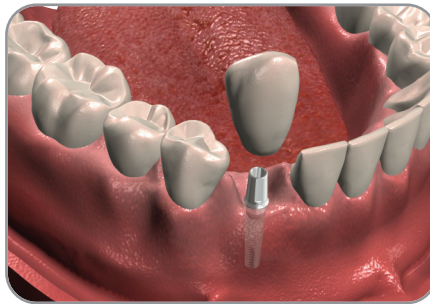
ScrewDirect®
3.0mmD



From Single Tooth Restorations...



Single Tooth Restoration with Legacy3 & Zirconia Abutment

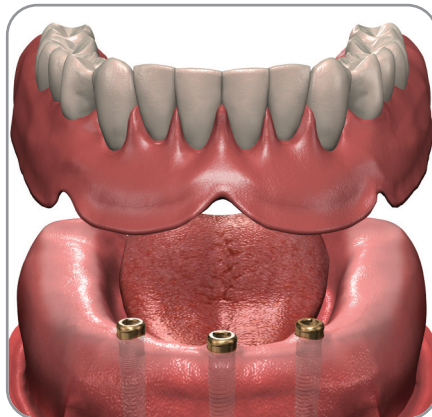


Single Tooth Restoration with ScrewDirect

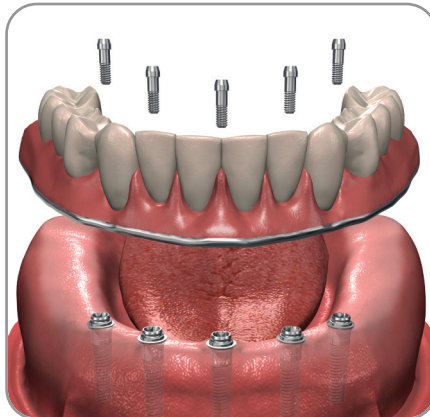
GoDirect™
3.0mmD

ScrewIndirect®
3.0mmD

To Overdentures and Teeth-in-1Day™



Implant-Retained Overdenture with GoDirect 1-Piece Implants



Implant-Supported Fixed Prosthesis with ScrewIndirect 1-Piece Implants

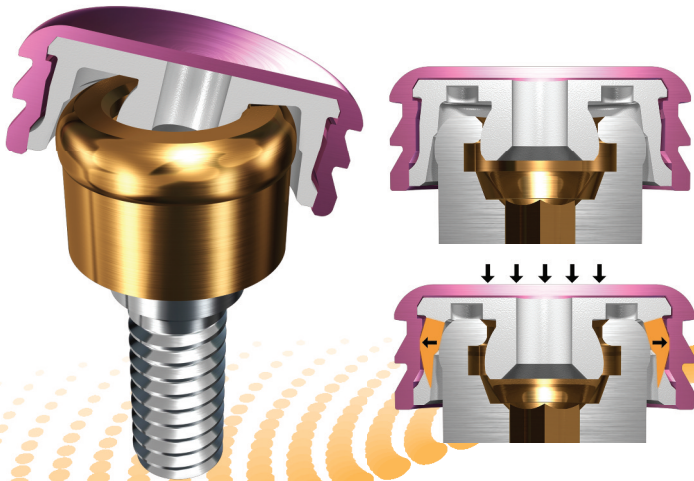


Learn more about Mini-Implants

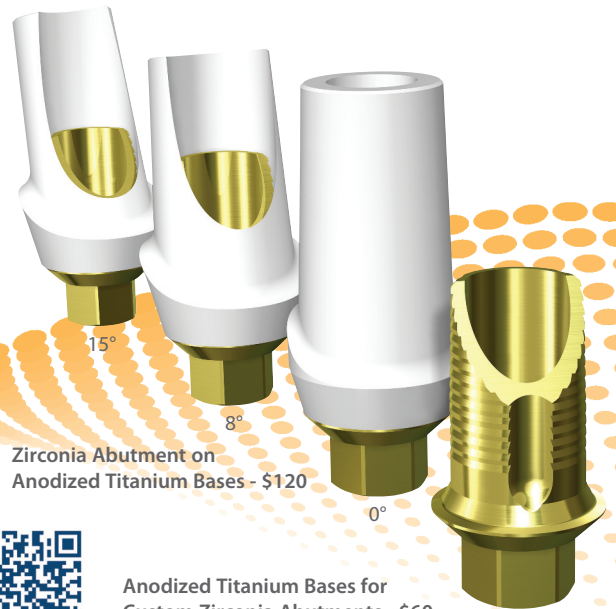


www.implantdirect.com | 888-649-6425

Simply Smarter Prosthetic Solutions



GPS® Abutment in 5 Collar Heights - \$100
NEW GPS™ Internal Attachment provides vertical and rotational stress-breaking



Zirconia Abutment on Anodized Titanium Bases - \$120

Anodized Titanium Bases for Custom Zirconia Abutments - \$60



GPS™ Overdenture Attachment System features Straight & Angled Abutments that provide a retentive platform compatible with LOCATOR® attachments. All-in-1 Packaging includes Anodized Housing with 5lbs Retentive Nylon Liner (nylon liners in 1.5, 3 & 5lbs - 4 for \$22) & Transfer. Straight Abutments accommodate up to 20° divergence while 15° & 30° Angled Abutments are suited for overdentures on angled implants.

Zirconia Abutments on Titanium Bases combine esthetics with strength & precision for restorations in the esthetic zone. The titanium base is gold anodized to maintain the natural tooth color of the zirconia while providing structural support. These stock abutments with contoured margins are provided in 0°, 8° & 15° with 1 & 2mm collar heights to minimize the need for preparation, thereby providing the benefits of custom abutments at less than half the price.

Joining our full line of industry-compatible prosthetics



Legacy™
Internal Hex

Compatible with Zimmer, BioHorizons®, MIS®



ScrewPlant®
Internal Hex

with External Bevel - ID Proprietary



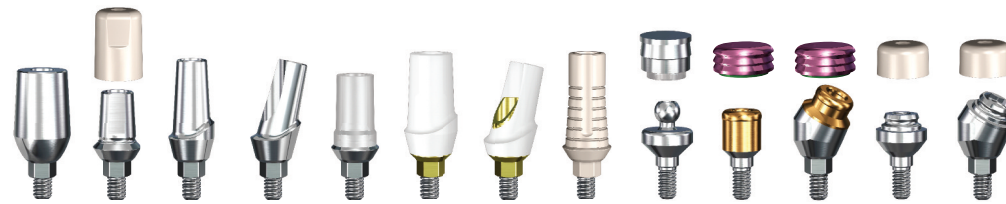
RePlant®
Internal Tri-Lobe

Compatible with NobelReplace™



Swish™
Internal Octagon

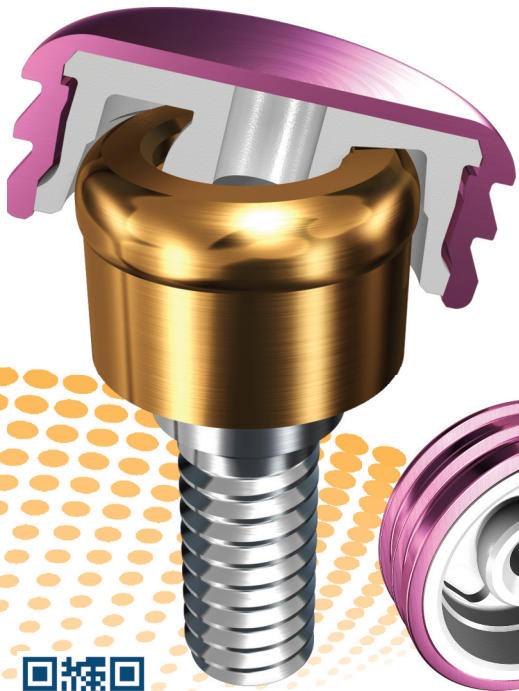
Compatible with Straumann Tissue Level



	Laboratory Abutment	Straight Snap-On	Straight Contoured	15° Angled Contoured	Gold/Plastic	Zirconia/Ti Abutment	Angled Zirconia/Ti Abutment	Plastic Temporary Abutment	Ball Attachment	GPS™ Attachment	Angled GPS™ Attachment	Multiple-Unit w/Cap & Transfer Straight	Multiple-Unit w/Cap & Transfer Angled
Our price	\$85	\$100	\$100	\$100	\$120	\$120	\$120	\$40	\$112	\$100	\$120	\$100	\$120
Zimmer Dental®	\$160	\$215	\$170	\$180	\$210	\$239	\$254	\$67	\$178	\$166	N/A	\$202	\$294
Straumann®	N/A	\$190	\$195	\$195	\$255	\$339 ¹	\$339 ¹	\$65	\$275	\$195	N/A	\$180	N/A
Nobel Biocare™	\$145	\$186	\$170	\$225	\$216	\$285	\$285	\$72	\$217	\$149	N/A	\$229	\$274

Buy 1 Zirconia \$120 abutment and receive 1 Free Titanium \$100 abutment²
 (or \$100 credit for any 2nd abutment). For online orders enter ZR85 in coupon code box

Price comparisons based upon US list prices as of February 2012. All trademarks are the property of their respective companies.
¹Comparison based upon Straumann's CARES custom zirconia abutment. Price varies depending upon the laboratory.
²Terms and conditions apply. Limit one offer per practice. Free abutment not to exceed \$100 value. No cash value.
³Data on file regarding GPS Internal and Zest Anchor's LOCATOR attachment with dual retention.
 LOCATOR® is a registered trademark of Zest Anchors Company. The GoDirect™ and GPS™ Systems are neither authorized, endorsed nor sponsored by Zest Anchors Company.



GPS^{Pat. Pend.} Attachment Leading the Way

GPS[®] with Internal Connection

- Retention Initially Retained when Tipped 10°³
- Vertical Resiliency for Less Stress on Implant



GPS[®] Overdenture Attachment System

New Internal Cap Attachment with Added Advantages

External Retention

Pink Anodized Titanium Cap with increased retention in denture base

Black Processing Cap made from high melting point plastic

Abutment inserted with standard insertion tools for each system

Internal Retention

Maintains greater % of initial retention over the first year in function than Zest's LOCATOR[®] Attachment (Insertion at 0° for 1200 cycles³)

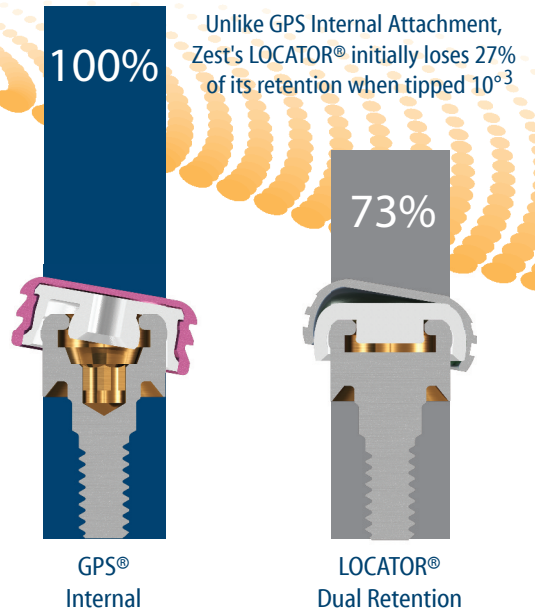


Internal cavity of abutment allows for increased vertical resiliency with occlusal loading

Titanium & nylon cap rotate together - eliminating cavity for plaque and debris present with Zest's LOCATOR Attachment

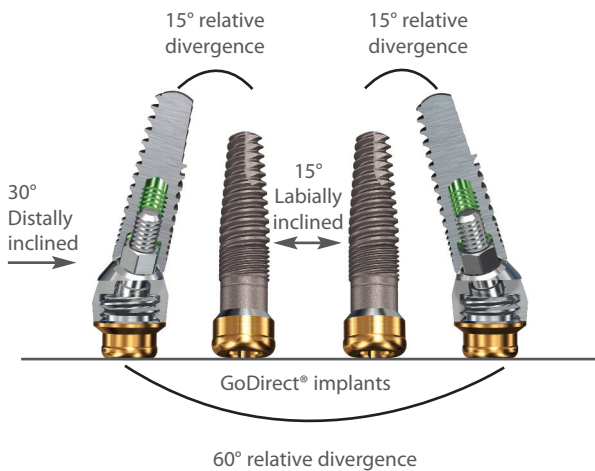
Straight Abutment with Cap Attachment, Transfer, Spacer & Comfort Cap: \$100

Zimmer: \$166; Straumann: \$195
Nobel Biocare: \$149; Zest Anchors Co: \$156



Only GPS offers 15° & 30° Angled Abutments with LOCATOR[®]-compatible platforms
Rated "Excellent" for "Tolerance of Non-Parallelism" in an Independent Report

- Gordon J. Christensen CLINICIANS REPORT, November 2011



GPS angled abutments accommodate the greatest degree of relative divergence available on the market

Straight and angled GPS abutments are available for: NobelReplace, NobelActive, Straumann Tissue Level, Zimmer's Screw-Vent, BioHorizons[®], MIS & Blue Sky Bio GoDirect[®] 1-piece implants with LOCATOR[®]-compatible platform. \$175 includes transfer and comfort cap. Internal threads allow for attachment of multi-unit abutment to convert treatment to fixed prosthesis.

Watch "All-over-4" 3D Graphic Video
GPS angled abutments combined with GoDirect implants provide an economical solution for treating edentulous jaws.

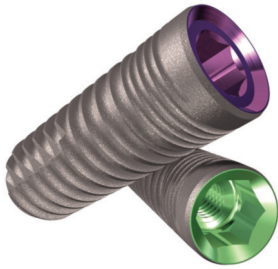


Dare to Compare on Innovation, Quality, Service and Value

Legacy™3 Implant

All-in-1 Packaging includes implant, abutment, transfer, cover screw & healing collar
\$200 vs \$633¹ from Zimmer Dental

✓ **Reality Check**
Zimmer Customers
Save \$433 with Legacy3



SwishPlant™ Implant

All-in-1 Packaging includes implant, straight abutment/transfer, cover screw & healing collar
\$200 vs \$737² from Straumann®

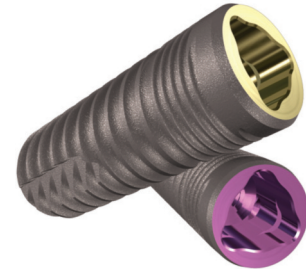
✓ **Reality Check**
Straumann Customers
Save \$537 with SwishPlant



ReActive™ Implant

All-in-1 Packaging includes implant, abutment, transfer & cover screw
\$200 vs \$718³ from Nobel Biocare™

✓ **Reality Check**
Nobel Customers
Save \$518 with ReActive



Implant Direct's New Las Vegas Training Center

Implant Direct offers an extensive list of educational opportunities at its Las Vegas Training Center with computers at each desk for Image Guided Surgical Training, models/mannequins for hands-on training and a four chair dental office for live surgical demonstrations.

24 CE CREDITS

Implant Dentistry 101: Three-Day Introductory Course

March 21-23 | May 16-18 | June 13-15

16 CE CREDITS

3D Implantology: Two-Day Advanced Course

Featuring Anatomage Passage surgical guide starter software

April 19-20 | August 16-17 | October 18-19



View Dr. Niznick's 2-Hour Lecture at Las Vegas Training Center & Earn 2 CE Credits FREE

Dr. Gerald Niznick discusses how the latest implant design innovations are shaping the future of implantology.



New
Check out our easy to use mobile app!

Introductory Offer: Make the switch & receive three FREE implants.⁴

www.implantdirect.com | 888-649-6425

Price comparisons based upon US list prices as of January 2013. All trademarks are property of their respective companies.
Satisfied among Current and Former Users, by Company US Q211 Millenium Research Group A Decision Research, Inc. Company
¹US list price for Tapered Screw-Vent with micro grooves, healing collar & straight abutment
²US list price for SLActive Tapered Effect implant, closure screw, healing abutment, solid abutment, transfer and comfort cap.
³US list price for NobelActive with cover screw, impression coping & abutment
⁴Terms and conditions apply
Live surgical demonstrations not available at all courses



Approved PACE Program Provider FAGD/MAGD Credit Approval does not imply acceptance by a state or provincial board of dentistry or AGD endorsement 8/1/2012 to 7/31/2015 Provider ID# 316714