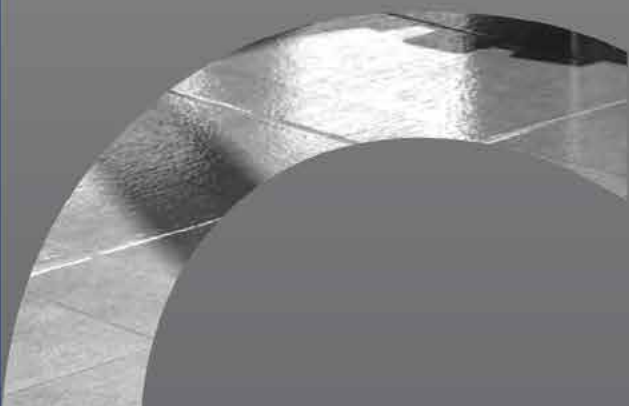
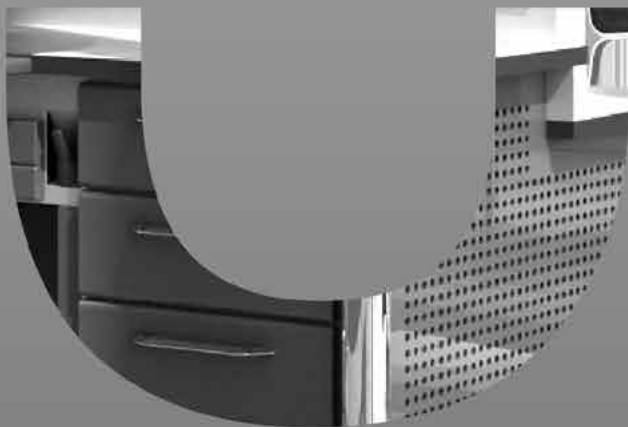




**Ermetal**

Experience  
starts from the line.

## Product Catalogue





Experience  
starts from the line...



**Ermetal**

Experience  
starts from the line.

ERMETAL, founded in 1978, is a global company engaged in manufacturing functional furniture for dental laboratories and practices.

Since its establishment, it has provided services to 45 countries in 5 continents and has consolidated a solid position in the international arena.

As the leading manufacturer for dental practices and laboratories, ERMETAL gives dentists and dental technicians the best service possible by falling back on its 7000 m<sup>2</sup> big production facility, competency and expertise of 50 staff members, and in the constant search for new technologies.

ERMETAL is able to observe projects directly on-site, benefits not only from its highly-experienced designers and state of the art production technologies when manufacturing homogenous products, but also when going beyond this and focus on need-based and tailor-made products.

Strengthen its production capacity by investing in human potential and new technologies, widen its product portfolio through research and development.

Always there, when you need a reliable product.  
Because **experience starts from the line...**

**Süleyman KARA**  
CEO



# C O N T E N T

04 **M SERIES**  
Laboratory Workbenches

28 **E SERIES**  
Complementary Modules

32 **LAB. 21**  
Laboratory Cabinets

44 **SPARE PARTS & ACCESSORY**

Ermetal Workbenches are designed and created to offer supreme quality, functionality, and durability to guarantee capital performance in today's lab environments.

Technical workstations and workbenches are the heart of any busy and efficient dental lab. Daily demands ranging from productivity to employee ergonomics, mean that you have to choose the products that support your systematic work which will last for years.

Our workbench systems offer a huge choice of heights and widths and functional accessories in either single-sided or double-sided or even specially designed configurations. This is the most modular, flexible, re-configurable technician workbench series available today.

**Technician  
Workbenches**

**Inspire your  
*imagination***



## Standart Features

- HPL-Compact & Wooden Worktops
- Chrom Legs
- Fix LED Lighting System
- 8-Level Analog Speed Switch
- 800 W Suction Engine
- Telescopic Drawer Slides
- Gas & Air Supply
- Plastic Suction Peg
- Wooden Arm Rests
- Round INOX Work Plate

## Optional Features

- Laminate Worktop
- Articulated, Flexible Lighting System
- 8-Level Digital Speed Switch
- Soft-Closing Drawer Slides
- Wooden Suction Peg



## Standart Features

- HPL-Compact Worktop
- Fix LED Lighting System
- 8-Level Analog Speed Switch
- 800 W Suction Engine
- Basic Drawer Slides
- Gas & Air Supply
- Plastic Suction Peg
- Wooden Arm Rests
- Square INOX Workplate

## Optional Features

- Laminate Worktop
- Articulated, Flexible Lighting System
- Telescopic & Soft-Closing Drawer Slides
- Wooden Suction Peg
- Round INOX Workplate



## M - 80

**Technical Details:**  
 Doctor's Single Workbench  
 22 mm HPL - Compact Worktop  
 Articulated, Flexible Lighting System, 2750 lm  
 800 W Suction System  
 Gas & Air Supply  
 2- Drawer Storage System  
 2- Drawer System for Waste & Dust  
 Complementary Cabinet for Ceramic Furnace  
 Dimensions: 60 x 111,5 x 86 cm (h)

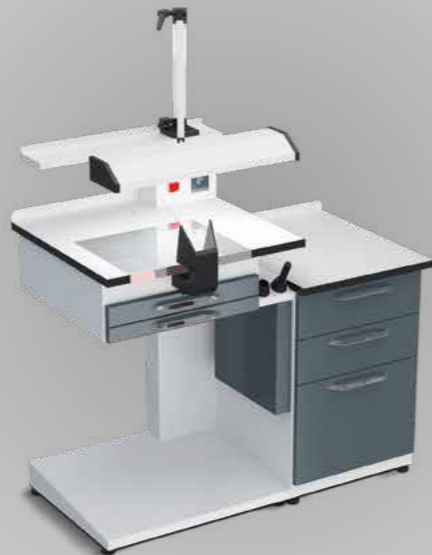
**Technical Details:**  
 Single Technician Workbench  
 22 mm HPL - Compact Worktop  
 Fix LED - Lighting System, 4000 lm  
 800 W Suction System  
 Gas & Air Supply  
 4- Drawer Storage System  
 2- Drawer System for Waste & Dust  
 Dimensions: 60 x 111,5 x 86 cm (h)

## M - 82

## M - 82 (CL)

**Technical Details:**  
 Single Technician Workbench  
 Chrome Legs Model  
 22 mm HPL - Compact Worktop  
 Articulated, Flexible Lighting System, 2750 lm  
 800 W Suction System  
 Gas & Air Supply  
 5- Drawer Storage System  
 2- Drawer System for Waste & Dust  
 Dimensions: 60 x 118 x 90 cm (h)

*Discreet design,*  
**powerful identity.**







**Technical Details:**  
 Single Technician Workbench  
 22 mm HPL - Compact Worktop  
 Fix LED - Lighting System, 5200 lm  
 800 W Suction System  
 Gas & Air Supply  
 8- Drawer Storage System  
 2- Drawer System for Waste & Dust  
 Dimensions: 60 x 150 x 86 cm (h)

### M - 82 / A

### M - 82 / A (CL)

**Technical Details:**  
 Single Technician Workbench  
 Chrome Legs Model  
 22 mm HPL - Compact Worktop  
 Articulated, Flexible Lighting System, 2750 lm  
 800 W Suction System  
 Gas & Air Supply  
 10- Drawer Storage System  
 2- Drawer System for Waste & Dust  
 Dimensions: 60 x 158 x 90 cm (h)



**Technical Details:**  
 Single Technician Corner Workbench with Storage Module  
 22 mm HPL - Compact Worktop  
 2 x Fix LED-Lighting System, 4000 lm  
 800 W Suction System  
 Gas & Air Supply  
 8- Drawer Storage System  
 2- Drawer System for Waste & Dust  
 Storage Corner Module  
 Dimensions: 60 x (187 x 187) x 86 cm (h)

### M - 82 / C

### M - 82 / C (CL)

**Technical Details:**  
 Single Technician Corner Workbench with Storage Module  
 Chrome Legs Model  
 22 mm HPL - Compact Worktop  
 2 x Articulated, Flexible Lighting System, 2750 lm  
 800 W Suction System  
 Gas & Air Supply  
 10- Drawer Storage System  
 4- Drawer System for Waste & Dust  
 Storage Corner Module  
 Dimensions: 60 x (190 x 190) x 90 cm (h)





**Technical Details:**  
 Single Technician Corner Workbench  
 22 mm HPL- Compact Worktop  
 2 x Fix LED -Lighting System, 4000 lm  
 800 W Suction System  
 Gas & Air Supply  
 8- Drawer Storage System  
 2- Drawer System for Waste & Dust  
 Dimensions: 60 x (171 x 171) x 86 cm (h)

**M - 82 / L**

**M - 82 / L (CL)**

**Technical Details:**  
 Single Technician Corner Workbench  
 Chrome Legs Model  
 22 mm HPL - Compact Worktop  
 2 x Articulated, Flexible Lighting System, 2750 lm  
 800 W Suction System  
 Gas & Air Supply  
 10- Drawer Storage System  
 2- Drawer System for Waste & Dust  
 Dimensions: 60 x (174 x 174) x 90 cm (h)



**Technical Details:**  
 Head Technician Workbench  
 Chrome Legs Model  
 22 mm HPL - Compact Worktop  
 Articulated, Flexible Lighting System, 2750 lm  
 800 W Suction System  
 Gas & Air Supply  
 10- Drawer Storage System  
 2- Drawer System for Waste & Dust  
 Dimensions: 89 x 210 x 90 cm (h)

**M - 83**





**Technical Details:**  
 Double Technician Workbench  
 22 mm HPL- Compact Worktop  
 Fix LED - Lighting System, 6200 lm  
 2 x 800 W Suction System  
 Gas & Air Supply  
 4- Drawer Storage System  
 4- Drawer System for Waste & Dust  
 Dimensions: 60 x 175 x 86 cm (h)

### M - 93

### M - 93 (CL)

**Technical Details:**  
 Double Technician Workbench  
 Chrome Legs Model  
 22 mm HPL - Compact Worktop  
 2 x Articulated, Flexible Lighting System, 2750 lm  
 2 x 800 W Suction System  
 Gas & Air Supply  
 5- Drawer Storage System  
 4- Drawer System for Waste & Dust  
 Dimensions: 60 x 183 x 90 cm (h)



**Technical Details:**  
 Double Technician Workbench  
 22 mm HPL- Compact Worktop  
 Fix LED - Lighting System, 7800 lm  
 2 x 800 W Suction System  
 Gas & Air Supply  
 8- Drawer Storage System  
 4- Drawer System for Waste & Dust  
 Dimensions: 60 x 215 x 86 cm (h)

### M - 96

### M - 96 (CL)

**Technical Details:**  
 Double Technician Workbench  
 Chrome Legs Model  
 22 mm HPL - Compact Worktop  
 2 x Articulated, Flexible Lighting System, 2750 lm  
 2 x 800 W Suction System  
 Gas & Air Supply  
 10- Drawer Storage System  
 4- Drawer System for Waste & Dust  
 Dimensions: 60 x 222 x 90 cm (h)



## M - 85

### Technical Details:

Single Technician Workbench  
22 mm HPL - Compact Worktop  
Fix LED - Lighting System, 4800 lm  
800 W Suction System  
Gas & Air Supply  
9- Drawer Storage System  
2- Drawer System for Waste & Dust  
Dimensions: 60 x 138 x 90 cm (h)



### Optional Features

Articulated, Flexible Lighting System, 2750 lm  
0,80 kW Brushless Suction Engine



## M - 98

### Technical Details:

Double Technician Workbench  
22 mm HPL - Compact Worktop  
Fix LED-Lighting System, 7600 lm  
2 x 800 W Suction System  
Gas & Air Supply  
8- Drawer Storage System  
4- Drawer System for Waste & Dust  
Dimensions: 60 x 232 x 90 cm (h)



### Optional Features

2 x Articulated, Flexible Lighting System, 2750 lm  
2 x 0,80 kW Brushless Suction Engine





**Technical Details:**  
 Technician Group Workbench for Three Technicians  
 22 mm HPL - Compact Worktop  
 3 x Fix LED - Lighting System, 4000 lm  
 3 x 800 W Suction System  
 Gas & Air Supply  
 3 x Complementary Cabinet for Ceramic Furnace  
 Dimensions: 245 x 285 x 86 cm (h)  
 13m<sup>2</sup> Working Space

## M - 100

## M - 100 (CL)

**Technical Details:**  
 Technician Group Workbench for Three Technicians  
 Chrome Legs Model  
 22 mm HPL - Compact Worktop  
 6 x Articulated, Flexible Lighting System, 2750 lm  
 3 x 800 W Suction System  
 Gas & Air Supply  
 3 x Complementary Cabinet for Ceramic Furnace  
 Dimensions: 250 x 290 x 90 cm (h)  
 14 m<sup>2</sup> Working Space



**Technical Details:**  
 Technician Group Workbench for Three Technicians  
 Chrome Legs Model  
 22 mm HPL - Compact Worktop  
 3 x Articulated, Flexible Lighting System, 2750 lm  
 3 x 800 W Suction System  
 Gas & Air Supply  
 Dimensions: 237 x 275 x 90 cm (h)  
 14 m<sup>2</sup> Working Space

## M - 150

## M - 200

**Technical Details:**  
 Technician Group Workbench for Four Technicians  
 Chrome Legs Model  
 22 mm HPL - Compact Worktop  
 4 x Articulated, Flexible Lighting System, 2750 lm  
 4 x 800 W Suction System  
 Gas & Air Supply  
 Convenient Shelf System  
 Dimensions: 230 x 240 x 90 cm (h)  
 10 m<sup>2</sup> Working Space





**Technical Details:**  
 Technician Group Workbench for Four Technicians  
 Chrome Legs Model  
 22 mm HPL - Compact Worktop  
 4 x Articulated, Flexible Lighting System, 2750 lm  
 4 x 800 W Suction System  
 Gas & Air Supply  
 Convenient Shelf System  
 Dimensions: 245 x 245 x 90 cm (h)  
 16 m<sup>2</sup> Working Space

## M - 260

## M - 280

**Technical Details:**  
 Technician Group Workbench for Four Technicians  
 Chrome Legs Model  
 22 mm HPL - Compact Worktop  
 4 x Articulated, Flexible Lighting System, 2750 lm  
 4 x 800 W Suction System  
 Gas & Air Supply  
 4 x Complementary Cabinet for Ceramic Furnace  
 Dimensions: 305 x 305 x 90 cm (h)  
 16 m<sup>2</sup> Working Space



**Technical Details:**  
 Technician Group Workbench for Four Technicians  
 22 mm HPL - Compact Worktop  
 4 x Fix LED - Lighting System, 4000 lm  
 4 x 800 W Suction System  
 Gas & Air Supply  
 4 x Complementary Cabinet for Ceramic Furnace  
 Dimensions: 348 x 348 x 90 cm (h)  
 20 m<sup>2</sup> Working Space

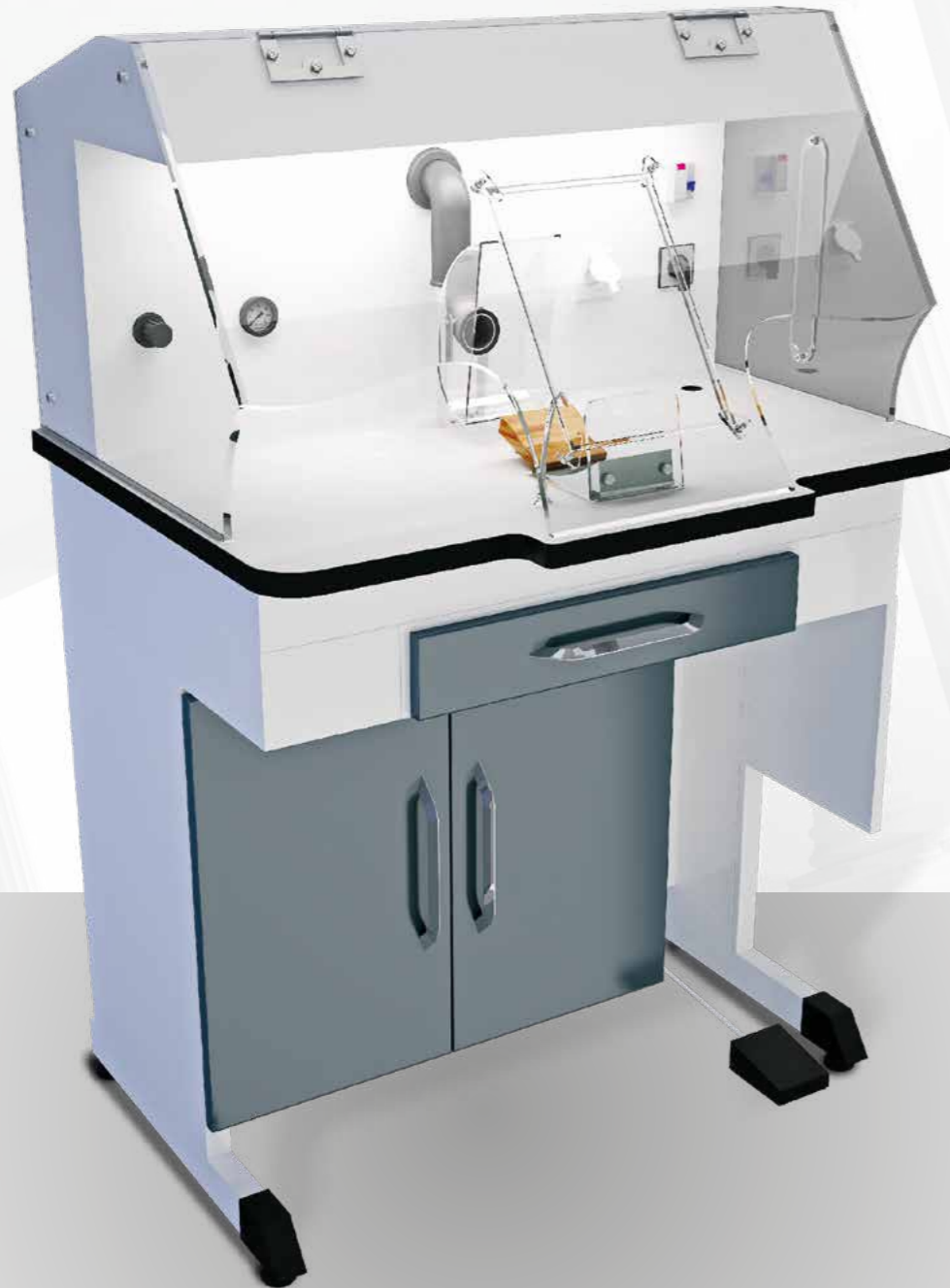
## M - SAM

## M - SAM (CL)

**Technical Details:**  
 Technician Group Workbench for Four Technicians  
 Chrome Legs Model  
 22 mm HPL - Compact Worktop  
 8 x Articulated, Flexible Lighting System, 2750 lm  
 4 x 800 W Suction System  
 Gas & Air Supply  
 4 x Complementary Cabinet for Ceramic Furnace  
 Dimensions: 355 x 355 x 90 cm (h)  
 22 m<sup>2</sup> Working Space



## S-BOX



### Technical Details:

Single Technician Workbench with Safety Hood  
 22 mm HPL - Compact Worktop  
 8 mm strong, closed, Plexy Glass Safety Hood  
 Etange Luminaire with 2 x 18 W Fluorescent Tubes  
 0,80 kW Brushless Suction Engine  
 Two-Ways Suction Channel  
 0,10 Micron Filter Sleeve  
 25 L Capacity for Dust Reservoir  
 Foot Pedal Control  
 Gas & Air Supply  
 Single Drawer System for Waste & Dust  
 Dimensions: 64 x 86 x 126 cm (h)

The S-Box has been specifically designed for roughing-out plaster and porcelain. Our main goal is to guarantee a clean and sturdy workplace while making sure that all particles are caught and sealed and can't affect the health of technicians in a negative way.

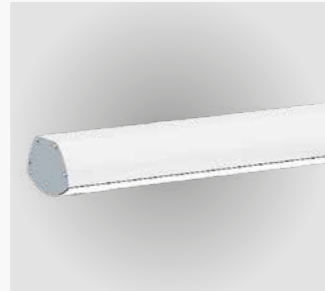
Dust and even smaller particles are filtered through a special filtering cloth and finally collected in a special container to prevent any danger of inhaling resins, gypsum and polluting metal dust produced while working. Ergonomic controls allow the technician to be efficient and fast with a minimal amount of movement. Technical gimmicks such as the changeable viewing panel, which can be replaced when worn-out is only one example of the unique concept behind this unit.



### Lighting Systems



Articulated, Flexible Lighting System



Fix LED Lighting System

### Gas Supply



Gas Tap



Gas Connection Hose

### Worktops



Laminate Worktop

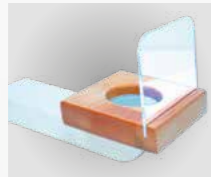


HPL-Compact Worktop



Wooden Worktop

### Working Area



Wooden Peg



Plastic Peg



Arm Rests



Round Workplate



Square Workplate

### Speed Controllers



Analog Speed Control



Digital Speed Control



16 A Residual Current Fuse

### Drawer Slides



Basic Drawer Slides



Soft-Closing Drawer Slides



Telescopic Drawer Slides

### Vacuum Systems



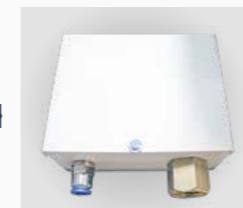
Teflon Filter



Dust Bag



Vacuum Engine



8 mm Pneumatic Air Thread

1/2 inch Gas Thread

### Air Supply



Retractable Air Mechanism



Air Gun









**Technical Details:**  
22 mm HPL- Compact Worktop  
Single Drawer, 13 cm (h)  
Single Door + Shelf Complementary Module  
Dimensions: 60 x 50 x 86 cm (h)

**E - 37**



**Technical Details:**  
22 mm HPL- Compact Worktop  
2- Drawer, each 13 cm (h)  
Single Door Complementary Module  
Dimensions: 60 x 50 x 86 cm (h)

**E - 38**

**E - 35**

**Technical Details:**  
22 mm HPL- Compact Worktop  
Double - Door + 2- Shelf Complementary Module  
Dimensions: 60 x 60 x 86 cm (h)



**E - 36**

**Technical Details:**  
22 mm HPL- Compact Worktop  
Single Door + 2- Shelf Complementary Module  
Dimensions: 60 x 50 x 86 cm (h)



**E - 39**

**Technical Details:**  
22 mm HPL - Compact Worktop  
4- Drawer, each 17 cm (h) Complementary Module  
Dimensions: 60 x 50 x 86 cm (h)



**E - 40**

**Technical Details:**  
22 mm HPL - Compact Worktop  
5- Drawer, each 13 cm (h) Complementary Module  
Dimensions: 60 x 50 x 86 cm (h)





**Technical Details:**  
22 mm HPL - Compact Worktop  
Single Door + 2- Shelf Complementary Module  
Dimensions: 60 x 50 x 76 cm (h)

**E - 41**



**Technical Details:**  
22 mm HPL - Compact Worktop  
2- Drawer, each 13 cm (h)  
Single Door Complementary Module  
Dimensions: 60 x 50 x 76 cm (h)

**E - 42**



**Technical Details:**  
22 mm HPL - Compact Worktop  
Single Door + Shelf Complementary Module for Corner  
Dimensions: 75 x 75 x 86cm (h)

**E - 49**

**E - 43**

**Technical Details:**  
22 mm HPL - Compact Worktop  
4- Drawer, each 15 cm (h) Complementary Module  
Dimensions: 60 x 50 x 76 cm (h)



**E - 50**

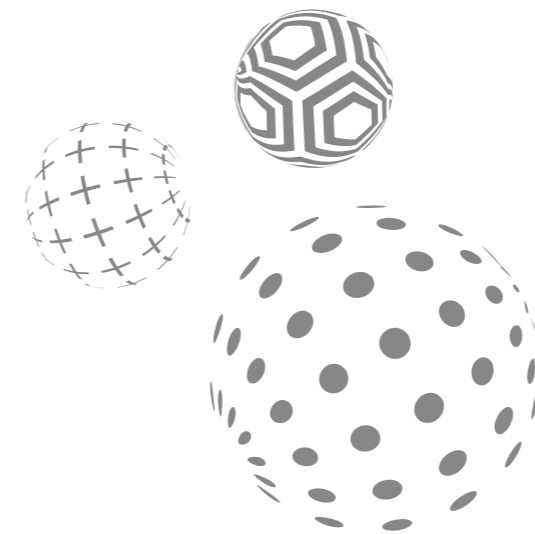
**Technical Details:**  
22 mm HPL - Compact Worktop  
Double - door + 2- Shelf Complementary Module for Corner  
Dimensions: 75 x 75 x 86 cm (h)



The foundation of an ideal laboratory environment is based on the planning stage. Unfortunately, plaster rooms are often neglected, but the Ermetal difference lies here! Benefit from our years of experience and the variety of solutions for your plaster room - you will immediately feel the difference.



**LAB. 21**



**Flawless**  
*Production*



**Technical Details:**  
INOX Worktop  
Square Legs with a height of 15 cm  
Single Drawer, 13 cm (h)  
Single Door + Shelf Laboratory Module  
Dimensions: 60 x 50 x 90 cm (h)

**LAB. 21 - B**

**Technical Details:**  
INOX Worktop  
Square Legs with a height of 15 cm  
3- Drawer, each 23,5 cm (h) Laboratory Module  
Suitable for Plaster Storage  
Dimensions: 60 x 50 x 90 cm (h)

**LAB. 21 - C**

**LAB. 21 - A**

**Technical Details:**  
INOX Worktop  
Square Legs with a height of 15 cm  
Single Door + 2- Shelf Laboratory Module  
Dimensions: 60 x 50 x 90 cm (h)



**LAB. 21 - D4**

**Technical Details:**  
INOX Worktop  
Square Legs with a height of 15 cm  
4- Drawer, each 18cm (h) Laboratory Module  
Dimensions: 60 x 50 x 90 cm (h)



**LAB. 21 - D5**

**Technical Details:**  
INOX Worktop  
Square Legs with a height of 15 cm  
5-Drawer, each 14 cm (h) Laboratory Module  
Dimensions: 60 x 50 x 90 cm (h)



**Flawless**  
*Production*



**Technical Details:**  
 INOX Worktop  
 35 x 40 x 18cm (h) Dimensions for INOX Sink  
 Air Gun Nozzle  
 Square Legs with a height of 15 cm  
 Double - door Laboratory Module  
 Dimensions: 60 x 100 x 90 cm (h)

**LAB. 21 - E 1**



**Technical Details:**  
 INOX Worktop  
 35 x 70 x 18cm (h) Dimensions for INOX Sink  
 INOX Sink Grid  
 Plastic or INOX Plaster Trap  
 Air Gun Nozzle  
 Square Legs with a height of 15 cm  
 Double - door Laboratory Module  
 Dimensions: 60 x 100 x 90 cm (h)

**LAB. 21 - E 2**



**Technical Details:**  
 INOX Worktop  
 Integrated INOX Hood  
 35 x 70 x 18 cm (h) Dimensions for INOX Sink  
 INOX Sink Grid  
 Plastic or INOX Plaster Trap  
 Air Gun Nozzle  
 Square Legs with a height of 15 cm  
 Double - door Laboratory Module  
 Dimensions: 60 x 100 x 90 cm (h)

**LAB. 21 - E 3**

**LAB. 21 - J**

**Technical Details:**  
 Completely made of INOX  
 Heavy - Duty Castor Wheels, fully lockable  
 3 Compartments for Plaster  
 65 L Capacity  
 Dimensions: 34 x 48 x 58 cm (h)





**Technical Details:**  
INOX Worktop  
Integrated Waste Chute with Spatula Scraper  
40 L Waste Bin in Cabinet  
Square Legs with a height of 15 cm  
Single Door + Shelf Laboratory Module  
Dimensions: 60 x 50 x 90 cm (h)

**LAB. 21 - G**



**Technical Details:**  
INOX Worktop  
Integrated Waste Chute with Spatula Scraper  
40 L Waste Bin in Cabinet  
Square Legs with a height of 15 cm  
Tilt-Out Drawer Suitable for Plaster Storage  
Single Drawer, 15 cm (h)  
Single Door + Shelf Laboratory Module  
Dimensions: 60 x 100 x 90 cm (h)

**LAB. 21 - GA**



**Technical Details:**  
INOX Worktop  
Square Legs with a height of 15 cm  
Single Door + 2- Shelf Laboratory Module  
60 x 100 x 90 cm (h)

**LAB. 21 - KA**



**Technical Details:**  
INOX Worktop  
Square Legs with a height of 15 cm  
Single Door + 2- Shelf Laboratory Module  
Dimensions: 60 x 100 x 90 cm (h)

**LAB. 21 - AK**

**LAB. 21 - GB**

**Technical Details:**  
INOX Worktop  
Integrated Waste Chute with Spatula Scraper  
40 L Waste Bin in Cabinet  
Square Legs with a height of 15 cm  
2- Drawer, each 30 cm (h)  
Suitable for Plaster Storage  
Single Door + Shelf Laboratory Module  
Dimensions: 60 x 100 x 90 cm (h)

**LAB. 21 - GC**

**Technical Details:**  
INOX Worktop  
Integrated Waste Chute with Spatula Scraper  
40 L Waste Bin in Cabinet  
Square Legs with a height of 15 cm  
3- Drawer, each 23,5 cm (h)  
Suitable for Plaster Storage  
Single Door + Shelf Laboratory Module  
Dimensions: 60 x 100 x 90 cm (h)

**LAB. 21 - H**

**Technical Details:**  
Completely made of INOX  
Heavy-Duty Castor Wheels, fully lockable  
INOX Handle  
85 L Capacity  
Dimensions: 40 x 45 x 65 cm (h)





**Technical Details:**  
22 mm HPL - Compact Worktop  
4- Shelf Shelving Unit for packaging  
Square Legs with a height of 15 cm  
Single Door and 5- Drawer Module System  
Dimensions: 60 x 100 x 205 cm (h)

**LAB. 21 - W 100**

**LAB. 21 - W 150**

**Technical Details:**  
22 mm HPL - Compact Worktop  
4- Shelf Shelving Unit for packaging  
Square Legs with a height of 15 cm  
Double Door and 5- Drawer Module System  
Dimensions: 60 x 150 x 205 cm (h)



**Technical Details:**  
Single Wall Cabinet  
Single Door and 2- Shelf  
Dimensions: 30 x 50 x 60 cm (h)

**LAB. 21 - AS-1**



**Technical Details:**  
Double Wall Cabinet  
Double - door and 2- Shelf Shelving Unit  
Dimensions: 30 x 100 x 60 cm (h)

**LAB. 21 - AS-2**

**LAB. 21 - AS-3**

**Technical Details:**  
Wall - Mounted, 2- Shelf Shelving Unit  
Dimensions: 30 x 100 x 60 cm (h)



**LAB. 21 - AS-4**

**Technical Details:**  
Wall-Mounted, 2- Shelf Shelving Unit with Sliding Glass Doors  
Dimensions: 30 x 100 x 60 cm (h)









ER - L001



ER - L002



ER - L030



ER - L029

ER-L010/A = 13 x 33,5 cm  
ER-L010/B = 13,5 x 18,5 cm  
ER-L010/S = 12,5 x 16,5 cm  
ER-L010/M = 14,5 x 17,5 cm  
ER-L010/L = 17,5 x 18,5 cm  
ER-L010/XL = 17,5 x 24,5 cm



ER - L010



ER - L011



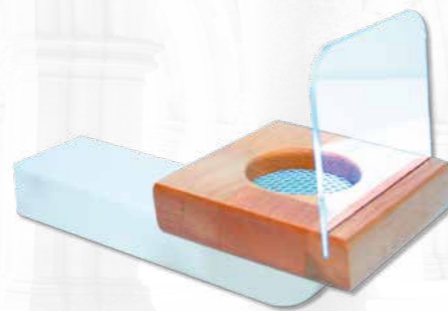
ER - L035



ER - L036



ER - L018



ER - L021



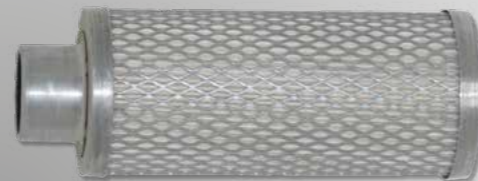
ER - L065



ER - L061



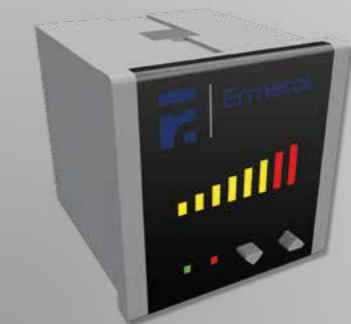
ER - L012



ER - L014



ER - L042



ER - L044



ER - L025



ER - L024



ER - L041



ER - L040



ER - L072



ER - L071



ER - L075



ER - L074



ER - L070



ER - L069



ER - L073



ER - L080



ER - L083



ER - L083



ER - L087



ER - L086



ER - L089



ER - L064 / 1



ER - L064 / 2



ER - L051



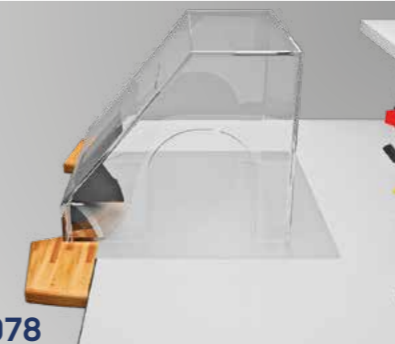
ER - L053



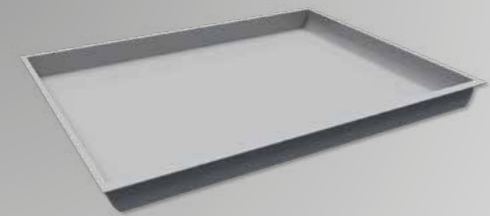
ER - L064 / 3



ER - L064 / 4



ER - L078



ER - L063



A l m o s t

a l l p r o d u c t s

can be **completely customized.**

*The possibilities are endless.*

#### **From Inspiration to Realisation**

We bring together inspiration and know-how. Art and life...

Each ERMETAL collection has its own unique personality.

Creativity, customization and responsibility: the unique values that define ERMETAL and our collections.

Our collections combine original designs, high-quality materials and unique know-how.

Our design process is a trinity between technology, materials science and intelligent form.



Büğdüz Mah. Çankırı Bul. No: 119  
06750 Akyurt ANKARA - TÜRKİYE  
T: +90 312 348 64 08 (pbx)  
F: +90 312 348 94 64

[ermetaldental.com.tr](http://ermetaldental.com.tr)  
[info@ermetaldental.com.tr](mailto:info@ermetaldental.com.tr)