

# Zirkonzahn®

*Human Zirconium Technology*



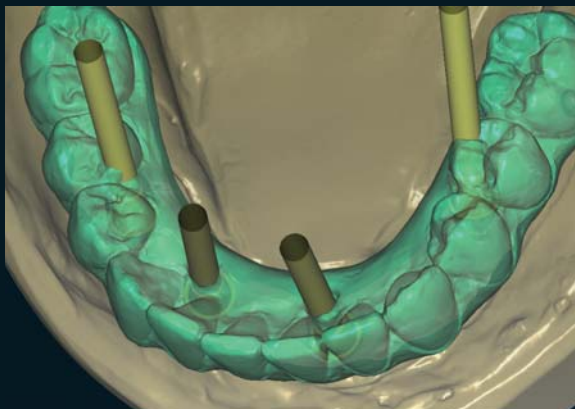
**100% PRETTAU® ZIRCONIA - MADE BY CAD/CAM**

*“Zirconia needs heroes“ Enrico Steger*

## *Screw-retained Prettau® bridge with titanium bases*

This case study shows a patient requiring an occlusally screw-retained bridge (Prettau® bridge) in the lower mandible area, with titanium bases on 4 implants (abutments at 20° angle).

Firstly, the wax-up of the resin teeth is made and then scanned. Modelling is performed followed by the nesting and milling with the CAD/CAM System 5-TEC. After milling, the blank is processed by using the ceramic cut-back technique on the 6 teeth of the front sector. The model is adapted to the structure and the veneers of 33 – 23 and the gum are coated with ICE Zirkon Ceramics. The structure is then coloured and glazed. Finally, the titanium bases are glued on in the mouth, guaranteeing maximum precision in positioning on the implants.



## *The Prettau® Bridge*

Dr. Bryan Limmer – University of North Carolina

Georg Walcher – Zirkonzahn Education Center



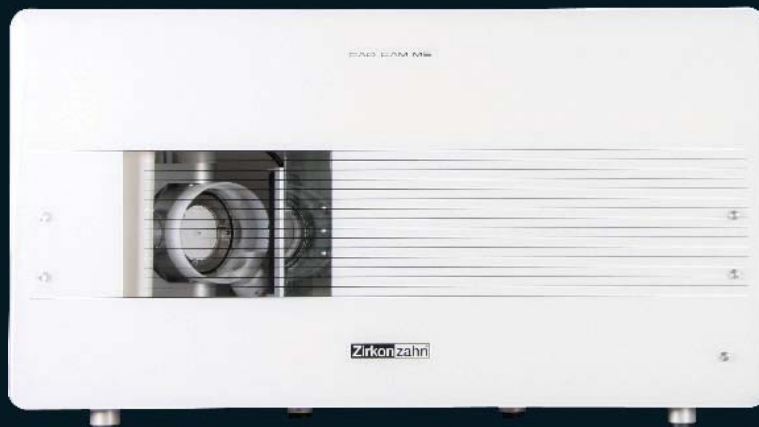
# Zirkonzahn®



*Milled with Zirkonzahn CAD/CAM System 5-TEC*

## HUMAN ZIRCONIUM TECHNOLOGY

*ZIRKONZAHN Worldwide - Tel +39 0474 066 680 - info@zirkonzahn.com - www.zirkonzahn.com*



WEAA5438=

*All information is subject to change. Errors and omissions excepted. Version: 06.09.2012*