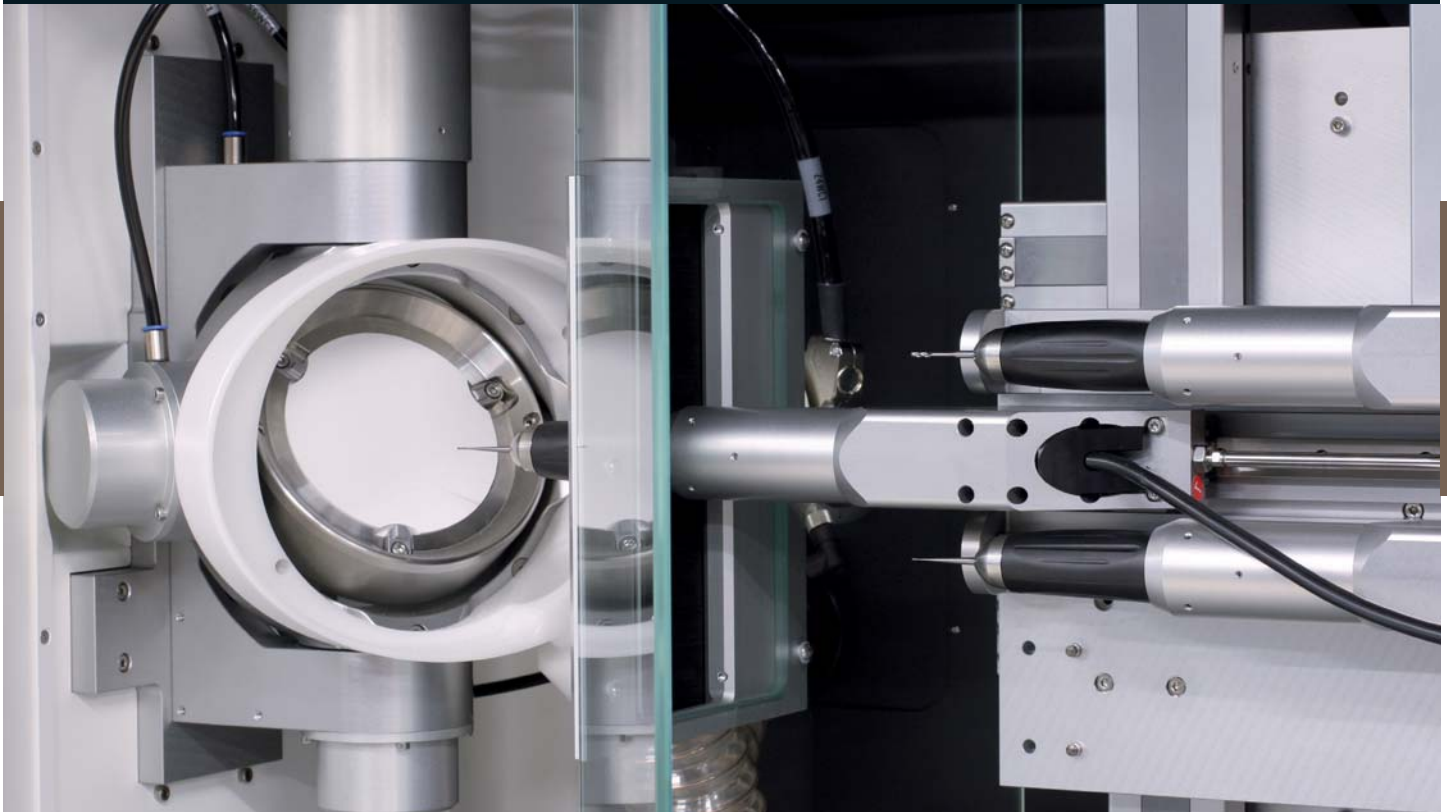


Zirkonzahn®

Human Zirconium Technology



CAD/CAM SYSTEM S-TEC

CAD/CAM System 5-TEC

- Suitable also for small laboratories
- Every single working step can be carried out in your own lab
- Open, future-proof system with modular technology

Advantages of 5+5 axes milling technology

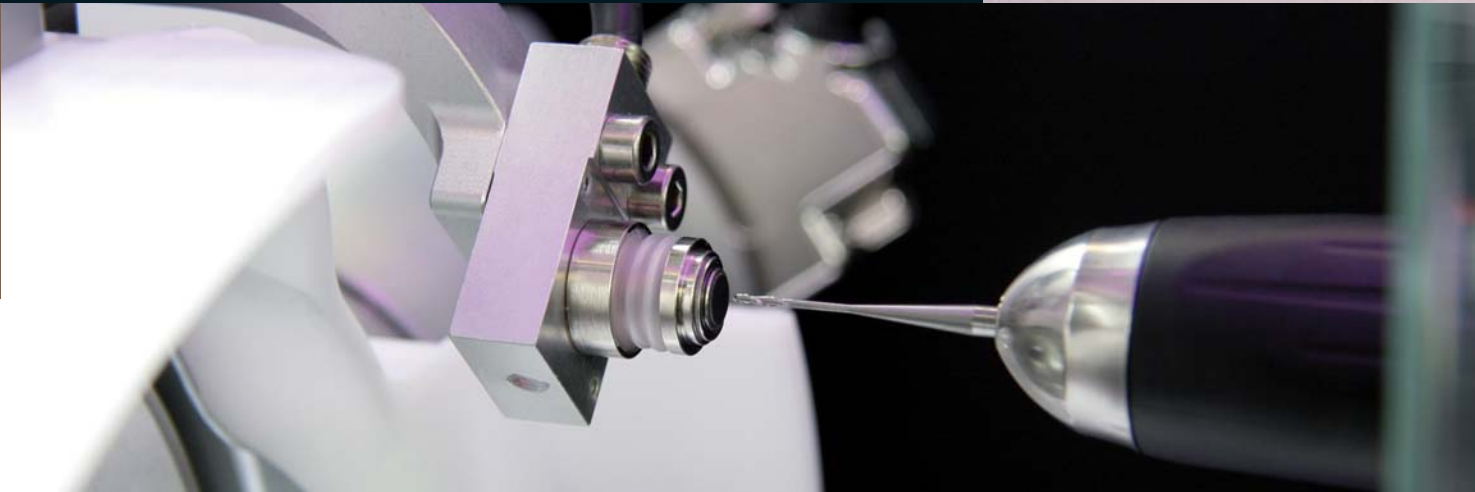
- Multi-purpose applications: for crowns and bridges, including occlusally screw-retained bridges, abutments, bars, attachments, inlays/onlays, bite splints, veneers.
- Milling of restorations with undercuts in all directions
- Modular concept design ensures that new parts can be upgraded individually

Materials possible for milling

- Presintered zirconium dioxide and aluminium oxide
- Resin and wax
- In future, also metal and ceramics can be milled



*Milled with Zirkonzahn CAD/CAM
System 5-TEC - 100 % Prettau Zirconia*

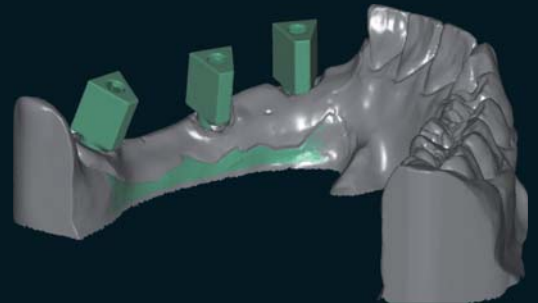


Precision achieved by Zirkonzahn technology

- Milling tools are measured with an accuracy of up to 0,001 mm
- Self-calibration of the system ensures - among other things - the highest possible precision when defining the zero point (axes intersection point)

Scanner S600

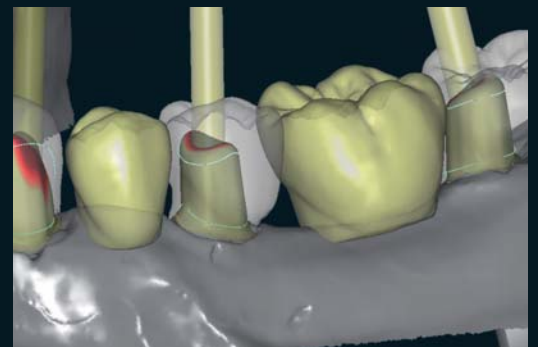
- Fully automated, optical strip-light scanner; precision: $\leq 10 \mu\text{m}$
- Easy to handle thanks to operating guidance (scan assistant)
- Scannable objects: individual dies, full arch bridges, bite records, opposing as mushbite, wax-ups, veneers and abutments
- Model rotation of up to 360° and inclination of up to 100° : any aspect of the object can be captured
- Occlusion levels and lifting devices can be scanned
- Extra-large survey parameters allow for scanning the articulator, whole arches and mockup frame works (Double Scan)
- For an exact replication of the virtual articulator within the modelling software, the lab articulator can be calibrated in the scanner (axis position)



*Software Module CAD/CAM
Occlusally Screwed Bridges*

Software

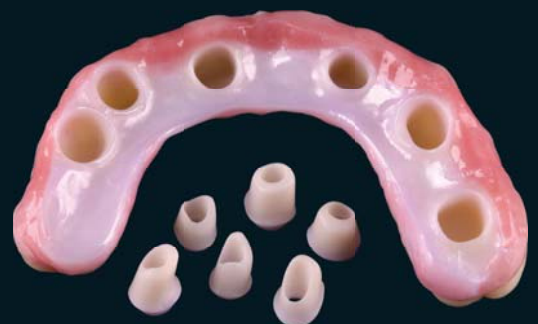
- User-friendly and purpose oriented: developed by a dental technician for dental technicians
- Simultaneous functions of scanning, modeling and milling
- Modular concept enables future integration of still unknown technologies
- Ongoing system updates thanks to continuous innovations and consistent software development (also in cooperation with our customers)



Software Module CAD/CAM Abutments

Additional software modules

- *Software Module CAD/CAM Occlusally Screwed Bridges*
 - Models occlusally screw-retained bridges and bars with individual profiles
 - Enables free design of emergence-profiles under consideration of anatomic tooth shapes
 - Virtual, continuously growing library with implant and connector systems as well as additional tooth shapes
- *Software Module CAD/CAM Abutments*
 - Models individual abutments and their emergence profiles
 - Supports a variety of different implant systems
 - Creates abutments with simultaneous consideration of the secondary structure. After the forms are finished, both - abutments and secondary structure - can be milled simultaneously



Milled with Zirkozahn CAD/CAM System 5-TEC

Zirkonzahn®

COMPLETE CAD/CAM SYSTEM S-TEC

System components:

- Computer driven 5-axes milling unit M5 with 2 milling handpieces and milling bur calibration
- Fully automated optical scanner S600
- Software package consisting of:
Scan software, modeling software, milling software, archive software, nesting software and CAM software
- Personal computer with 16:10 widescreen display

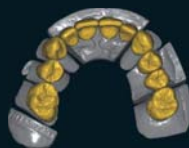


Zirkonzahn® .Modellier - ADDITIONAL MODULES



Inlay/Onlay

Module for Inlays/Onlays and Veneers



Prettau (fully anatomic)

Module for full-anatomical designs (incl. reduction option)



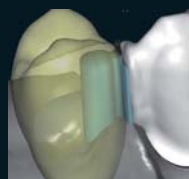
Telescopic Crowns

Module for primary telescopic crowns



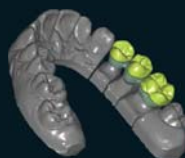
Occlusally Screwed Bridges

Module for occlusally screwed bridges and crowns



Attachment

Module for prefabricated attachments



Overpress crowns and bridges

Module for 'press over' crown & bridgework



Wax-up/Situ/Mirror imaging

Module for working with diagnostic wax-ups, situ-scans (Double Scan) and mirror imaging opposing arch scans with reference to scanned master model



Bar

Module for custom bars



Abutments

Module for abutments



Virtual articulator

Module for articulated functional joint movements

ZIRKONZAHN World Wide - Tel +39 0474 066 680 - info@zirkonzahn.com - www.zirkonzahn.com



WEAA5425=

Specifications and delivery subject to change without notice