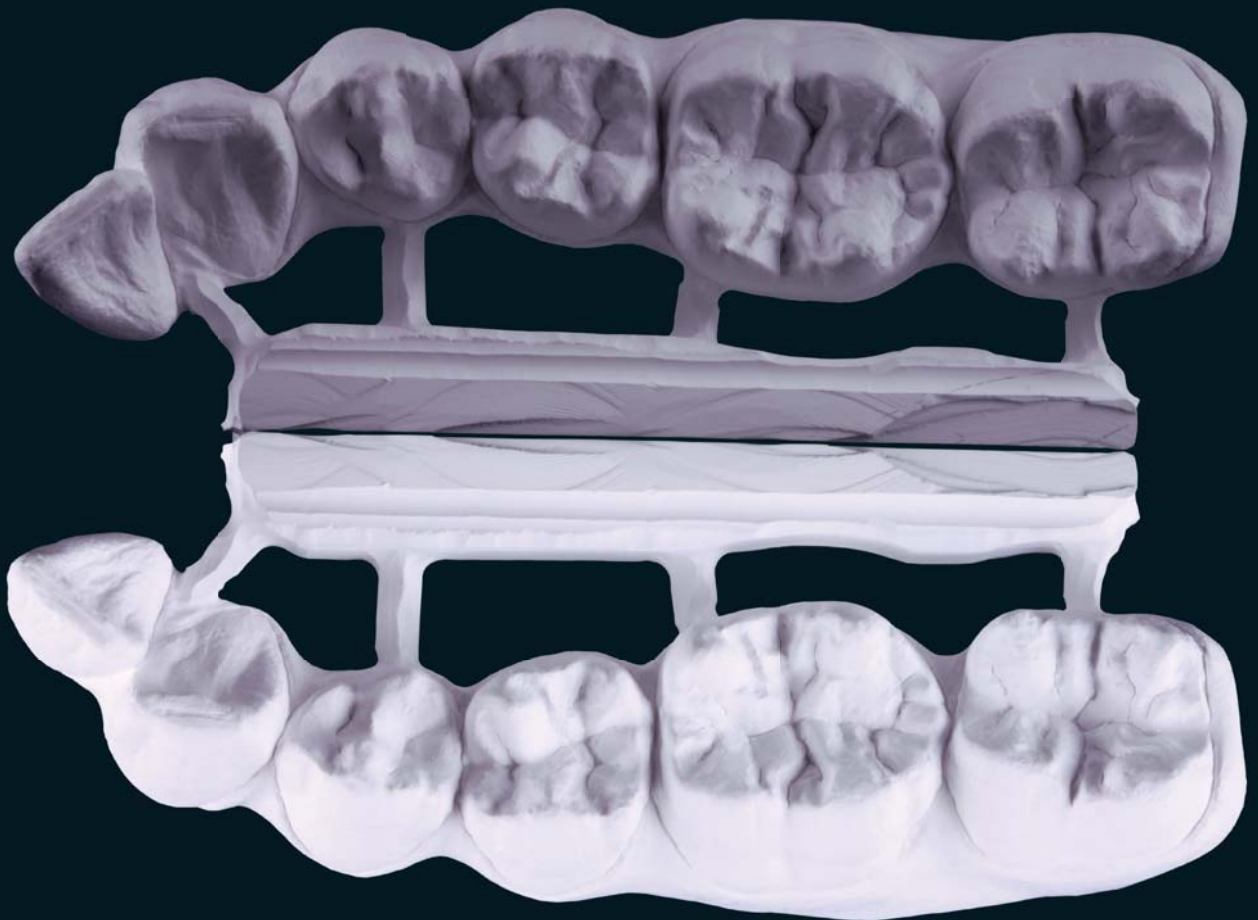


Zirkonzahn[®]

Human Zirconium Technology

Open and fully automated Scanner S600



Milled with Zirkonzahn CAD/CAM System 5-TEC

„... for the love of what we do!“



Open, fully automated Scanner S600

- Fully automated, optical strip-light scanner
- Scannable objects: Amongst others individual dies, arch segments, full arch models, bite records, opposing dentition, wax-ups, mushbite, veneers, abutments
- Bite rims, tooth set-up aids can be shown
- Model rotation up to 360° and incline up to 100°: Any aspect of the object can be recorded
- The extra-large survey parameters allow for whole-arch and articulator scans
- Opposing dentition scan: From mushbite records, complete arches
- Articulator scan
- Scanning of mock-up framework (double scan)
- Precision of the scanner: $\leq 10 \mu\text{m}/\text{micron}$
- Easy application by a comprehensible scan assistant
- Ultra-precise axis control
- Generates STL-Files



NEW

Software Module CAD/CAM Virtual articulator

Module for articulated functional
joint movements



COMPLETE CAD/CAM SYSTEM S-TEC

System components:

- *Computer driven 5-axes milling unit M5 with 2 milling handpieces and milling bur calibration*
- *Fully automated optical scanner S600*
- *Scan-, modeling- and milling software*
- *Personal computer with screen*



ZIRKONZAHN World Wide - Tel +39 0474 066 680 - info@zirkonzahn.com - www.zirkonzahn.com



WEAA5417=