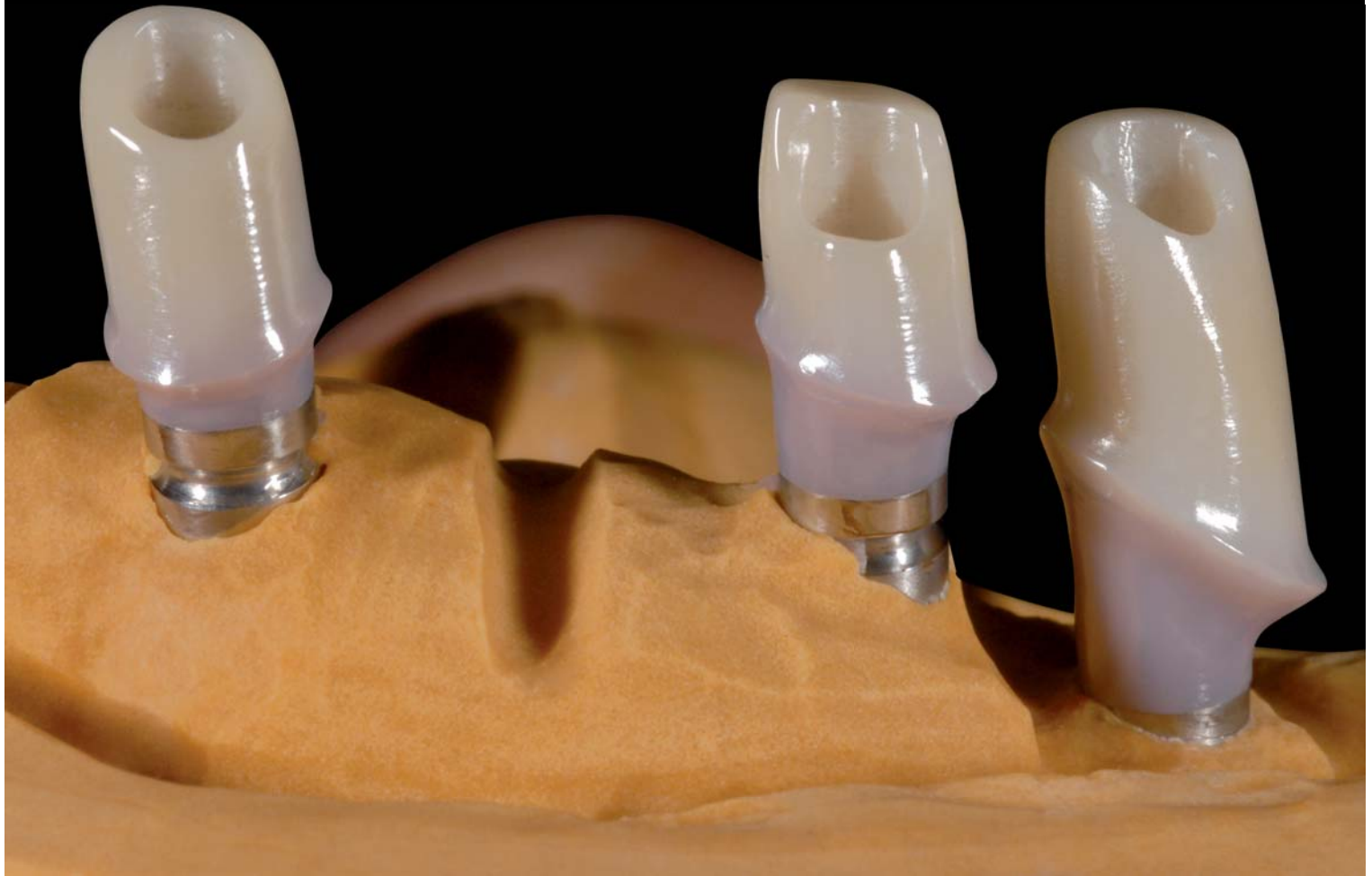


Zirkonzahn®

Human Zirconium Technology



Abutment blanks with Alignment Bar set

Use of prefabricated Abutment Blanks for various implant systems



Accessories used



Alignment Bar set for Zirkograph 025 with tilting device |

(Item number: ZBAA6501)

Consists of:

1x Alignment Bar for Zirkograph 025 with tilting device

1x Abutment Alignment Block for zirconia blank

2x Cylinder-head screw M4 x 20 galvanized

2x Counter-sunk head screw M3 x 8 for insert guide fixation

2x Nuts for Alignment Bar fixation



Alignment Bar set for Designer Zirkograph and Zirkograph 025 ECO with 5th axis |

(Item number: ZBAA6511)

Consists of:

1x Alignment Bar for Designer Zirkograph and Zirkograph 025 ECO with 5th axis

1x Abutment Alignment Block for zirconia blank

2x Cylinder-head screw M4 x 20 galvanized

2x Counter-sunk head screw M3 x 8 for insert guide fixation

2x Nuts for Alignment Bar fixation



Alignment Bar for Zirkograph 025 with tilting device |

(Item number: ZBAA6521)

Alignment Bar for Designer Zirkograph and Zirkograph 025 ECO with 5th axis |

(Item number: ZBAA6531)



Abutment Alignment Block for zirconia blank |

(Item number: ZBAA6571)



Cylinder-head screw M4 x 20 galvanized |

(Item number: ZBAA6541)



Nuts for Alignment Bar fixation |

(Item number: ZBAA6551)



Counter-sunk head screw M3 x 8 for insert guide fixation |

(Item number: ZBAA6561)



Guide Block to fit Brånemark® 4,1 |

(Item number: ZBAA6601)



Guide Block to fit Brånemark® 5,1 |

(Item number: ZBAA6611)



Guide Block to fit Straumann® NN 3,5 |

(Item number: ZBAA6621)



Guide Block to fit Straumann® RN 4,8 |

(Item number: ZBAA6631)



Guide Block to fit Straumann® WN 6,5 |

(Item number: ZBAA6641)



Guide Block to fit Astra® 3,5/4,0 |

(Item number: ZBAA6651)



Guide Block to fit Astra® 4,5/5,0 |

(Item number: ZBAA6661)

Prefabricated abutment blanks



Zirconia Abutment Blank Transluzent compatible with **Brånemark® 4,1**
(Item number: ZRABP013)
Contents: 3 pieces



Zirconia Abutment Blank Transluzent compatible with **Brånemark® 5,1**
(Item number: ZRABP023)
Contents: 3 pieces



Zirconia Abutment Blank Transluzent compatible with **Straumann® NN 3,5**
(Item number: ZRABP033)
Contents: 3 pieces



Zirconia Abutment Blank Transluzent compatible with **Straumann® RN 4,8**
(Item number: ZRABP043)
Contents: 3 pieces



Zirconia Abutment Blank Transluzent compatible with **Straumann® WN 6,5**
(Item number: ZRABP053)
Contents: 3 pieces



Zirconia Abutment Blank Transluzent compatible with **Astra® 3,5/4,0**
(Item number: ZRABP063)
Contents: 3 pieces



Zirconia Abutment Blank Transluzent compatible with **Astra® 4,5/5,0**
(Item number: ZRABP073)
Contents: 3 pieces

Manual for the use of Abutment Blanks with Alignment Bar

STEP 1



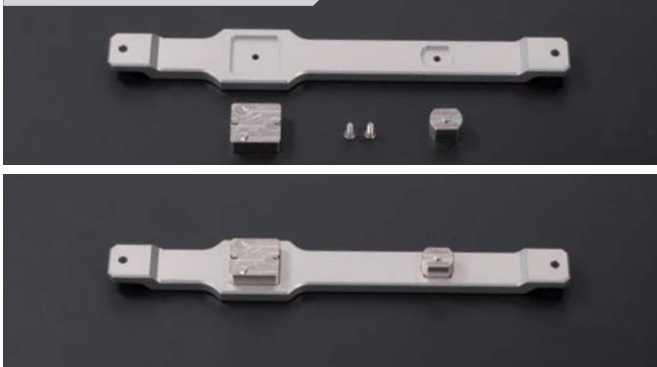
Prepare Zirkograph 025, Zirkograph 025 ECO or Designer Zirkograph: Remove standard screws and replace with cylinder-head screws M4 x 20 (part of Alignment Bar set)

STEP 2



Flip milling table 180 degrees to reverse side – note the protruding threads of cylinder-head screws M4 x 20

STEP 3



Fix Abutment Alignment Block for zirconia blank and Guide Block (match implant system used) to Alignment Bar with counter-sunk head screw M3 x 8 (part of Alignment Bar set)

STEP 4



Flip milling table 180 degrees back to top side – Insert and fasten milling table inserts for zirconia blank and template disc

STEP 5



Flip back to reverse side – fix Alignment Bar to milling table with nuts (part of Alignment Bar set)

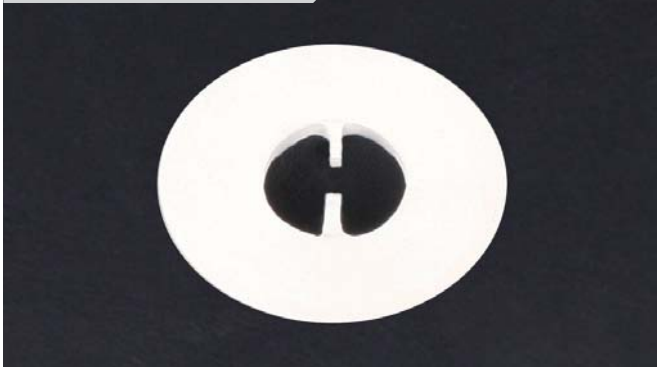
STEP 6



Flip back to top side

Manual for the use of Abutment Blanks with Alignment Bar

STEP 7



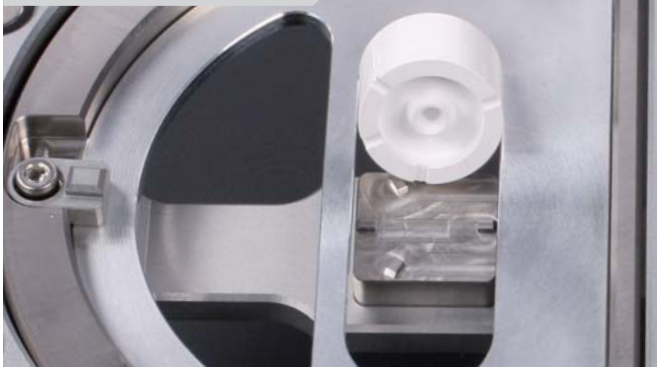
Prepare template disc as shown

STEP 8



Attach abutment mock-up to Guide Block and fix to template disc – then fix template disc to milling table insert in the usual manner with glue-gel

STEP 9



Position Zirconia Abutment Blank on Abutment Alignment Block (match implant system used)

STEP 10



Fix zirconia abutment blank to milling table insert with glue gel

STEP 11



Flip back to reverse side – remove nuts and Alignment Bar from milling table; Return to top side – commence milling

STEP 12



Copy mill outer perimeters only as usual – Note: Screw access channel and fitting surface are prefabricated and complete – no further milling required. Finish in the usual manner