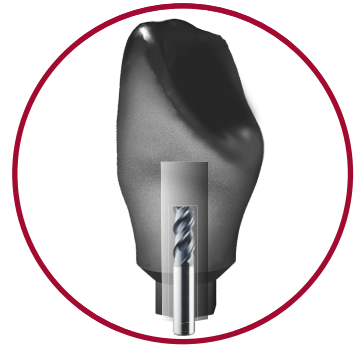


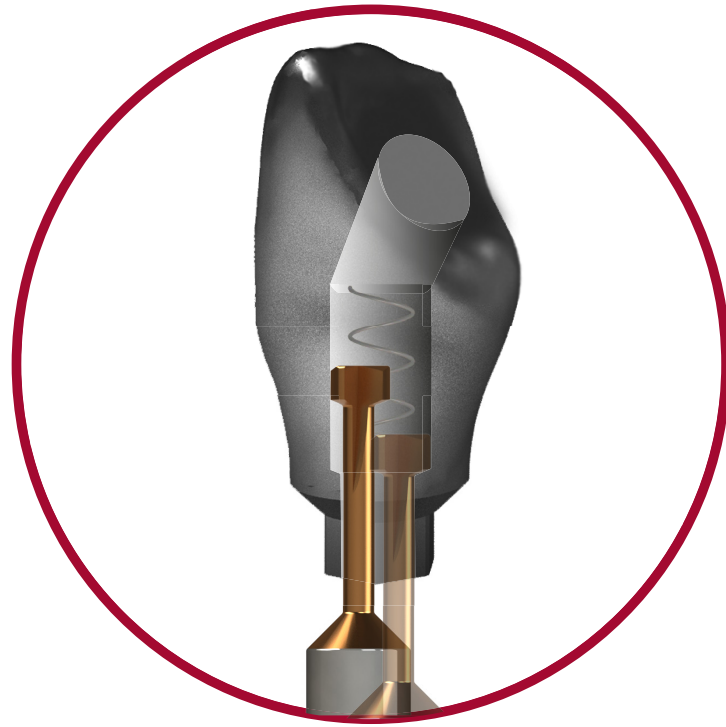
# Dynamic Milling Tool



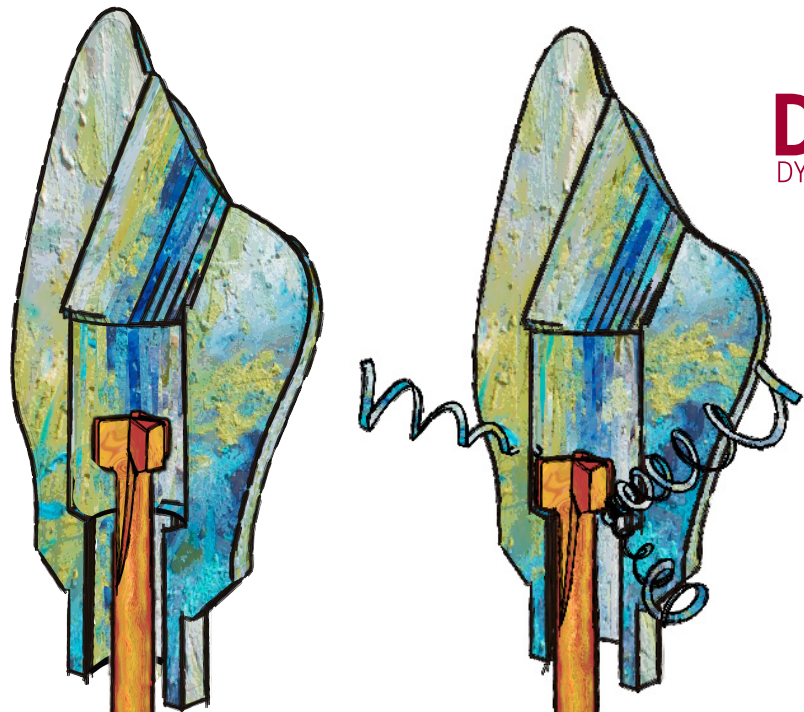
**STEP 1:**  
Crown with pre drill.



**STEP 2:**  
Crown with Angled channel.



**STEP 3:**  
Crown with Dynamic Milling Tool.  
Milling the screw seat and increasing the diameter of the straight channel.



**DMTONE**  
DYNAMIC MILLING TOOL



AV. BLONDEL, 54 3º  
25002 LLEIDA (SPAIN)  
TEL. +34 973 289 580  
das@dynamicabutment.com  
www.dynamicabutment.com



**DYNAMIC  
MILLING  
TOOL**

**DMTONE**  
DYNAMIC MILLING TOOL

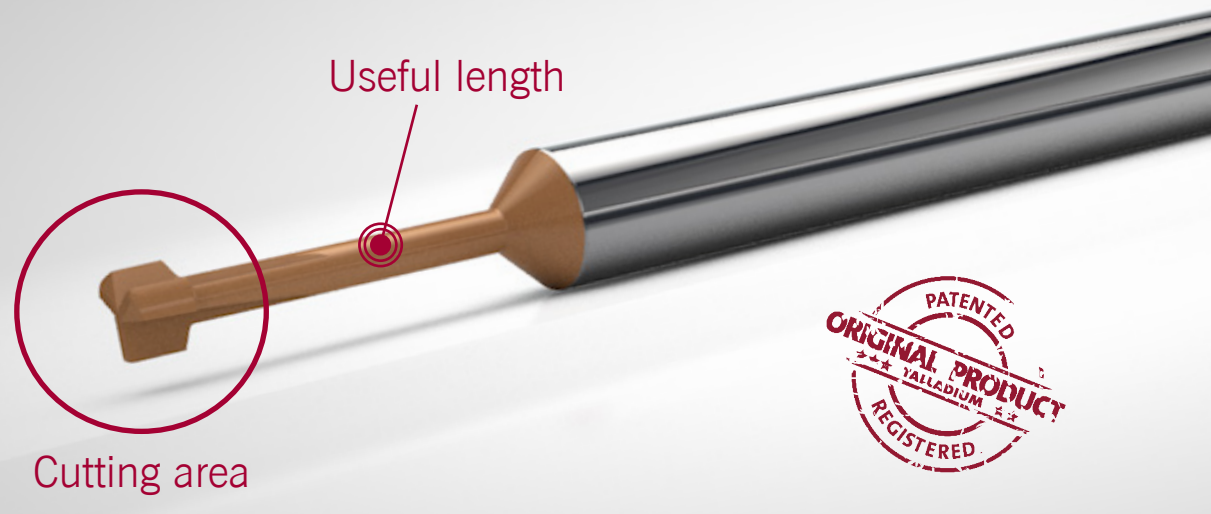
# Dynamic Milling Tool

# Dimensional Characteristics

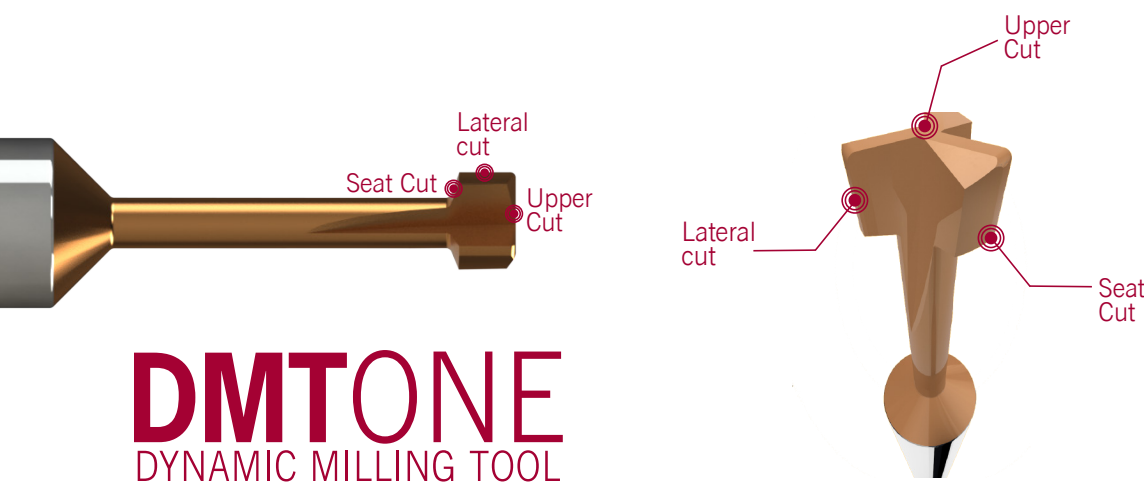
# Study of the Tool

Each tool is compatible depending on screw seating, metric and length

Precision milling tool. In the screwed angled structure direct to implant, it is used to mill the screw seating and to increase the internal diameter of the straight channel.

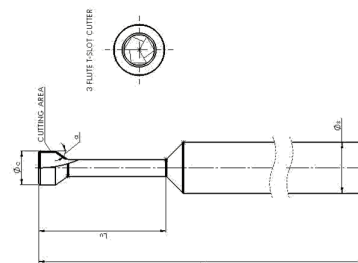


There are 3 cutting wing-tips with 3 different cutting area each, to mill the screw seating and to increase the internal diameter of the straight channel.



CONNECTION	REFERENCE	CUTTING DIAMETER	SEAT	USEFUL LENGTH (max drilling depth)	SUPPORT DIAMETER (SHANK)	TOTAL LENGTH
		$\varnothing_c$	$\alpha$	$L_u$	$\varnothing_s$	$L_t$
STRAUMANN BONE LEVEL NP, RP	33.315.804.01-2	1,6	15	8	3	50
	33.415.804.01-2	1,6	15	8	4	50
	33.615.804.01-2	1,6	15	8	6	50
NOBEL BIOCARE ACTIVE NP	33.335.754.01-2	1,6	35	7,5	3	50
	33.435.754.01-2	1,6	35	7,5	4	50
	33.635.754.01-2	1,6	35	7,5	6	50
OSSTEM TS NP	33.345.804.01-2	1,6	45	8	3	50
	33.445.804.01-2	1,6	45	8	4	50
BIOMET 3I CERTAIN NP, ASTRA AQUA	33.390.754.01-2	1,6	90	7,5	3	50
	33.490.754.01-2	1,6	90	7,5	4	50
	33.690.754.01-2	1,6	90	7,5	6	50
BIOMET 3I CERTAIN RP, NOBEL BIOCARE BRANEMARK NP, NOBEL BIOCARE REPLACE NP	33.390.805.01-2	1,7	90	8	3	50
	33.490.805.01-2	1,7	90	8	4	50
	33.690.805.01-2	1,7	90	8	6	50
ZIMMER SCREW-VENT NP, RP	33.370.716.01-2	1,8	70	7,1	3	50
	33.470.716.01-2	1,8	70	7,1	4	50
	33.670.716.01-2	1,8	70	7,1	6	50
NOBEL BIOCARE BRANEMARK RP, NOBEL BIOCARE MULTI-UNIT RP, BIOMET 3I OSSEOTITE NP	33.390.716.01-2	1,8	90	7,1	3	50
	33.490.716.01-2	1,8	90	7,1	4	50
	33.690.716.01-2	1,8	90	7,1	6	50
STRAUMANN INTERNAL OCTAGON RP	33.315.708.01-2	2	15	7	3	50
	33.415.708.01-2	2	15	7	4	50
	33.615.708.01-2	2	15	7	6	50
STRAUMANN SYNOCTA RP	33.330.708.01-2	2	30	7	3	50
	33.430.708.01-2	2	30	7	4	50
	33.630.708.01-2	2	30	7	6	50
NOBEL BIOCARE ACTIVE RP	33.335.758.01-2	2	35	7,5	3	50
	33.435.758.01-2	2	35	7,5	4	50
	33.635.758.01-2	2	35	7,5	6	50
OSSTEM TS RP	33.345.808.01-2	2	45	8	3	50
	33.445.808.01-2	2	45	8	4	50
NOBEL BIOCARE REPLACE RP, ASTRA LILAC	33.390.958.01-2	2	90	9,5	3	50
	33.490.958.01-2	2	90	9,5	4	50
	33.690.958.01-2	2	90	9,5	6	50

\*Full compatibility chart in the CadCam Intraoral Solutions catalogue



TESTED and VALIDATED by **worknc Dental**

