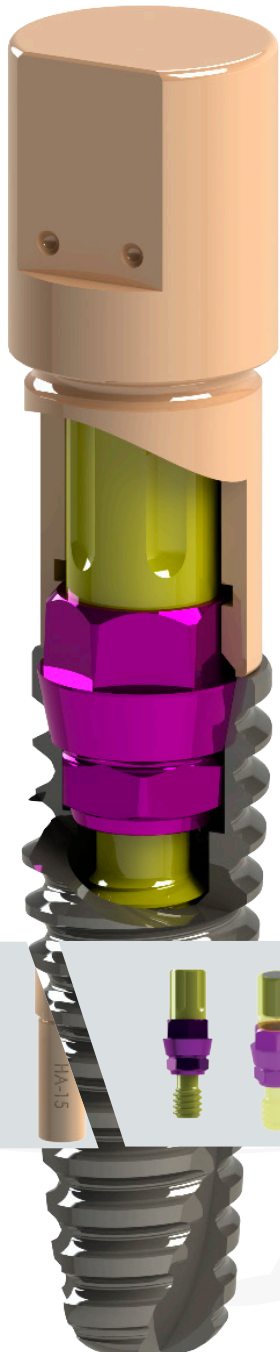




CAD-CAM INTRAORAL SOLUTIONS



Angulated
Own Technology



DYNAMIC ABUTMENT® SOLUTIONS


AV. BLONDEL, 54 3º · 25002 · LLEIDA (SPAIN)
TEL. +34 973 289 580
das@dynamicabutment.com
www.dynamicabutment.com

The information included in this catalogue is exclusively addressed to professionals in dental sector.

All commercial trademarks mentioned herein are fully registered by their respective companies, and the images that appear are just to provide an orientation.

Talladium reserves the right to modify this document without previous notice.

Talladium is not responsible for the inadequate execution of these products if the warning indications corresponding to every reference are not contemplated.

 Approval of total quality system assurance by notified body, according to Community legislation, for sterile and medical devices Class I.
Class I includes: Intraoral Scanbody, Intraoral System Adaptor, Digital Analog and Intraoral System screwdriver.



Visit our Online Store to find all our products and compatibilities :

www.dynamicabutmentstore.com

INDEX

5	LIST OF INTRAORAL SYSTEM COMPATIBILITIES
6	RESEARCH & DEVELOPMENT
7	QUALITY CENTER & INTERNATIONAL CUSTOMER SERVICE
8	DYNAMIC SYSTEM FOR MILLING STRUCTURES
10	INTRAORAL SYSTEM
12	INTRAORAL SCANBODY
13	ADAPTOR
14	DIGITAL ANALOG
16	DIRECT TO IMPLANT
18	DYNAMIC TI-BASE®
20	PRE-MILLED
22	SOWTFARE CAD-CAM
24	DIRECT TO IMPLANT CAD-CAM
26	DYNAMIC TI-BASE® CAD-CAM
27	DIGITAL ANALOG CAD-CAM
27	PRE-MILLED CAD
28	INTRAORAL SYSTEM COMPATIBILITES
134	DYNAMIC SCREWDRIVER & DYNAMIC SCREWS
135	COMPLEMENTS
136	DYNAMIC SCREWS TECHNICAL SPECIFICATIONS
138	STRAIGHT SCREWS TECHNICAL SPECIFICATIONS
140	INTRAORAL SYSTEM COLORS ACCORDING TO COMPATIBILITY
143	DYNAMIC MILLING TOOL SPECIFICATIONS
144	TALLADIUM GUARANTEE

Intraoral System



List of INTRAORAL SYSTEM compatibilities

AB	28	DENTALTECH	60	MPI	100
ACE	30	DENTIS	62	NEOBIOTECH	102
ADIN	32	DENTIUM	64	NEODENT	104
ALPHABIO	34	DIO IMPLANTS	66	NOBEL BIOCARE	106
ANCLADEN	36	DSP BIOMEDICAL	68	NORMON	110
ANTHOGRYR	36	ECKERMAN	68	OSSEOLIFE	110
ARDS	38	ELITE MEDICAL	68	OSSTEM IMPLANT	112
ASTRA	40	EUROTEKNIKA	70	OSTEOPLUS	114
AVINENT	42	GALIMPLANT	76	PHIBO	114
BIOGENESIS	44	GMI (ILERIMPLANT)	76	PROCLINIC	116
BIOHORIZON	46	GT MEDICAL	78	RADHEX	118
BIOMET 3I	48	HI-TECH	80	SGS	118
BIOLOK	50	IHDE DENTAL (IMBIODENT)	82	SIGNO VINCES	120
BIONER	52	IMPLANT DIRECT	84	SOUTHERN IMPLANTS	122
BIOTEC	54	JDENTALCARE	88	STRAUMANN	126
BTI	54	KEYSTONE	88	SYBRON IMPLANTS SOLUTIONS	128
BTK	56	KLOCKNER	90	TITANIUM-FIX	128
B&W	56	LEADER	90	TRI DENTAL IMPLANTS	130
CONEXÃO SISTEMA DE PRÓTESE	58	MEGAGEN	92	TRINON	130
CORTEX	60	MICRODENT	94	ZIMMER	132
		MIS	96		
		MOZO GRAU	98		

Research & Development

Always ready to be trendsetters

Our main purpose is to keep leading the way in angled systems, that is why our research and innovation in prosthetic solutions are our hallmarks.

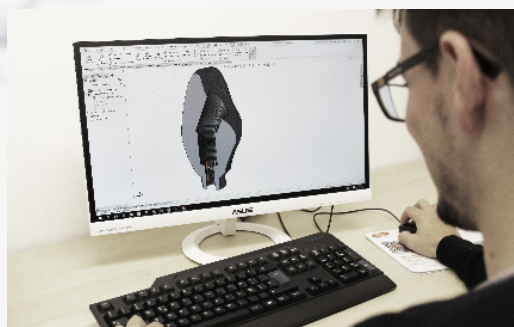
The proximity to professional needs and the innovative philosophy of our brand allow our technical team to be at the cutting edge of the sector. When developing the product, we give priority to product output, ease of use and improvement in terms of the aesthetic result.

Research and development of new products have been our main objectives. This enabled us to create innovative projects responding to sector needs.

The result (in the shape of numerous patents presented by our R&D&I Department) has been new products launched onto the market, fruit of work done in our R&D&I department and a good working relationship with the best people and leading companies in the sector that, like Dynamic Abutment Solutions, champion research and development.

Dynamic Abutment Solutions: always ready to be trendsetters. That is why we have started our **Production Center**: our own production center which allows us to rapidly create prototypes for new products and undertake applied research into new technologies.

The UNE-166002 certified R&D&I Centre ensures an exhaustive control of all the developmental stages for new projects. This enables these projects to turn into new products to the benefit of our clients as rapidly as possible and under the highest levels of safety and quality.



Quality Center

Dynamic Abutment® Solutions features significant resources to ensure our clients receive products in the very best quality and safety guaranteed.

It has the latest marking, control and measurement equipment, in addition to specific features to effect physical-chemical treatments on our products .

Our presence in international markets means we have the mandatory healthcare certificates supporting our healthcare product: CE marking, CMD/CAS standards and FDA certificates.

One of our primary commitments is the guarantee that the devices which we make available to our clients fully meet all healthcare regulations.

Our primary concern from the very beginning has been the quality and safety of our products: UNE-EN ISO 9001:2015 , UNE-EN ISO 13485:2016, and UNE 166002:2014



The Quality Center has an ISO-8 clean room



Quality Management System



Medical devices



Health Canada Certified

International Customer Service

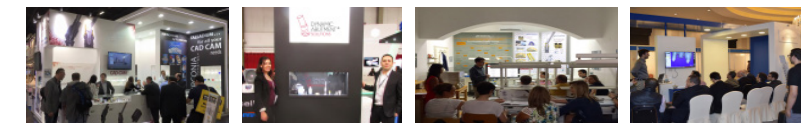
At Dynamic Abutment® Solutions we are very proud to offer an excellent customer service. Our aim is to establish constant communication with our international distributors and partners. We offer instant replies and solutions, answers to your queries, and provide technical advice for more complex cases.

Our international department also offers support to register our products in other countries.

Direct contact with and suggestions from our clients allow us to continuously improving the quality of the products and services we offer on a daily basis.



Fairs and events attendances and training courses



Dynamic System for milling structures

More than
100.000
cases resolved
with Dynamic
System

The Screwdriver set of 3.0 Dynamic Abutment® System is used in those cases in which rectification of the entry of the screw due to an unfavorable position of the implants is necessary, improving the functionality and aesthetics of the milled prosthesis.

Dynamic Screwdriver

Screwdriver with hexalobular head, exclusively to the 3.0 Dynamic Abutment® system; lengths: 18, 24, 32mm.

Our screwdriver has a contra-angle connection to make it easier to use with a dynamometer or manual ratchet, with the corresponding adaptors or handles.

Dynamic Screws

They cover all the tread metrics available on the market. They are used with the 3.0 Dynamic Abutment®, the 3.0 Dynamic TiBase® or milled structures with an angled screw channel of up to 30°. There are several lengths for each metric to ease adaptation to the structures. All of them are made of grade 5 titanium

All screws are perfectly identified with their batch and reference numbers, which allow each and every screw to be traced and recorded in the patient's card and in the clinical or laboratory records. Only the 3.0 dynamic screwdriver must be used to install them.





Intraoral System

High precision Scanbody Intraoral System for intra and extraoral CAD scanning procedures, incorporating the angled working system.



Digital registration of implant position using a scanner

Accurate & easy to use

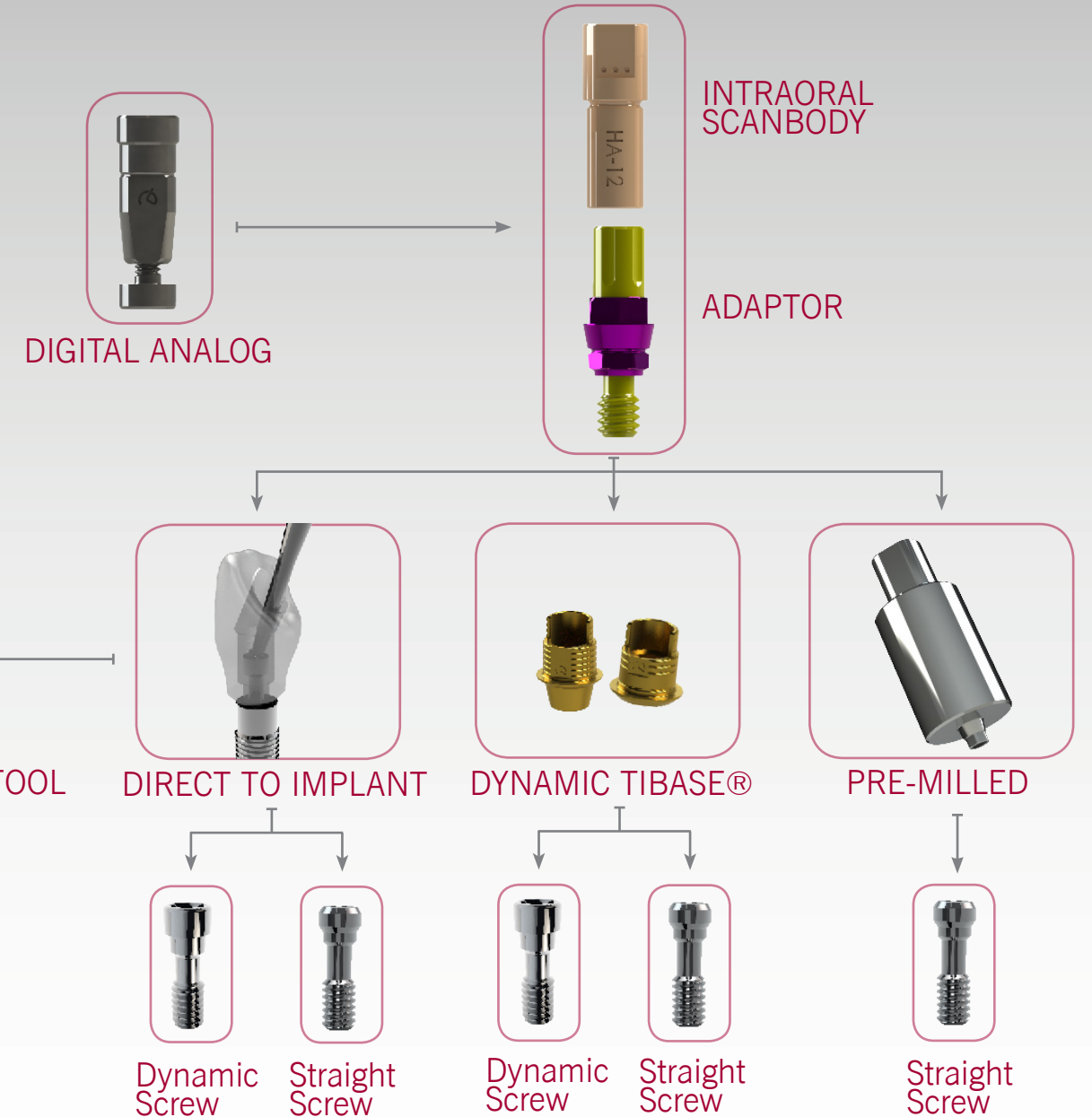
Unique Fastening System



Certified product

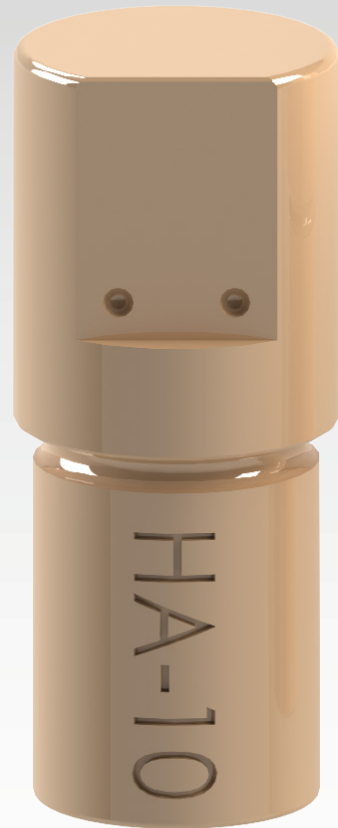


The Dynamic Abutment® Solutions Micro-Scan system brings together cutting edge technology developed by the R&D&I department to provide the greatest precision and accuracy in the scanning and milling process. We have a certified minimum accuracy of $\pm 3 \mu\text{m}$



Also suitable for Lab Scanner

Intraoral Scanbody



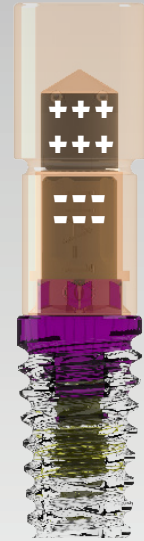
The scanbody does not bolt onto the implant, so there are no holes in the upper section which means the Z axis is free to improve scanbody body scanning

Hole free scanbody and not screwed

10 scanbodies for over 200 compatibilities



Fastened to an adaptor using a magnet

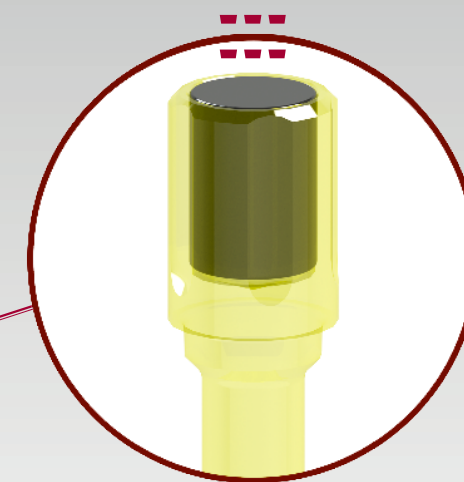


3 lengths (10mm, 12mm & 15* mm) for the most complex scanbody reading cases.

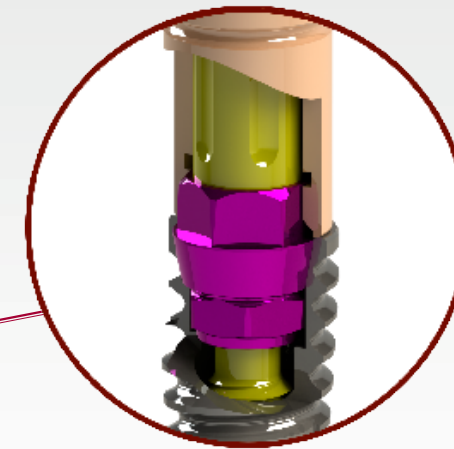
* On request

Adaptor

Connecting element between the scanbody and the implant. Marked with different colors according to compatibility.



Fastened to the scanbody using a magnet



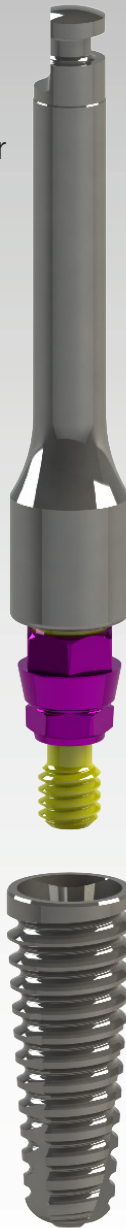
Screwed into the implant

Enables to know the position of the implant faces



1 adaptor for 3 scanbodies of different heights

Universal and special screwdriver for the adaptor



Digital Analog

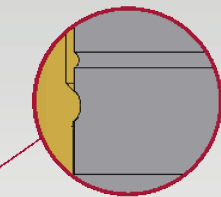


Digital replica of the dental implant to simulate implant position in a 3D printed dental model.

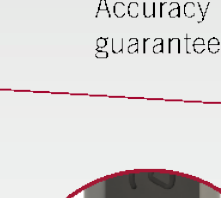


3D Printed Model

The dental model - for later insertion of the replicas - is designed using the CAD libraries.



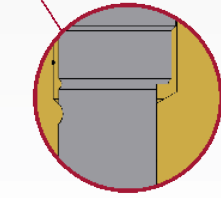
Concave notch
Top precision in longitudinal position.



Curved Surface
Accuracy of orientation guaranteed



Screwed fastening
Prevents the analog from moving in Z.



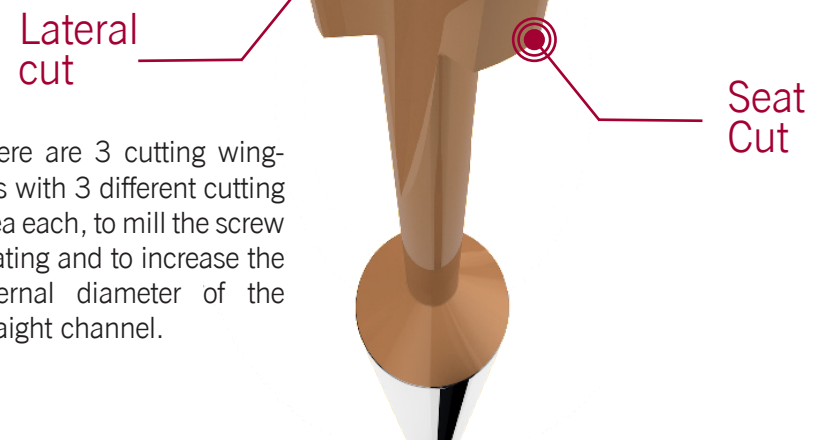
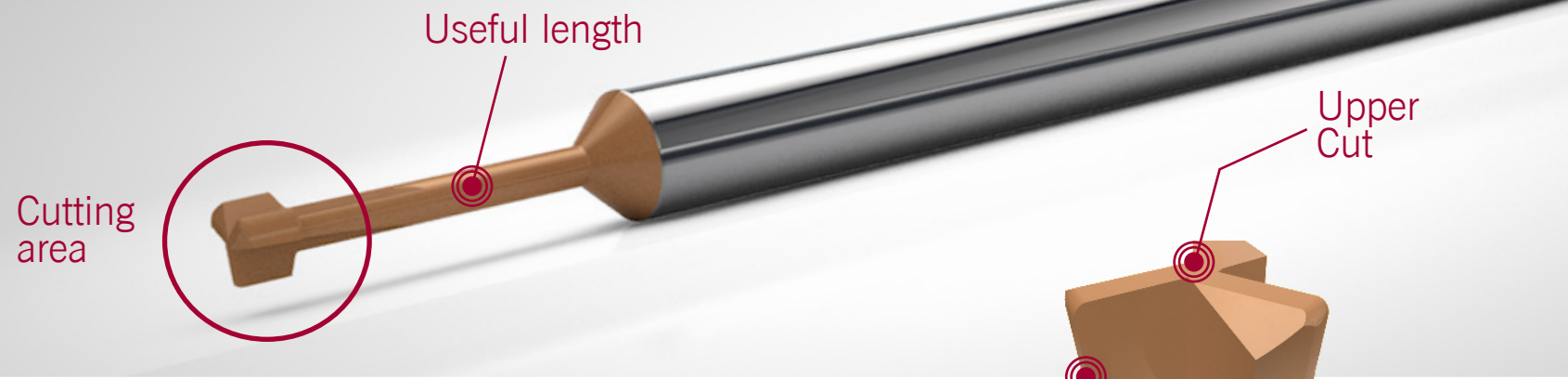
Longitudinal cut
Longitudinal cut to avoid rotation in X-Y.



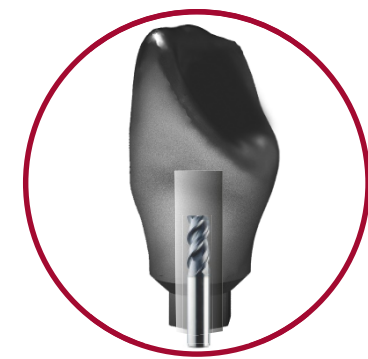
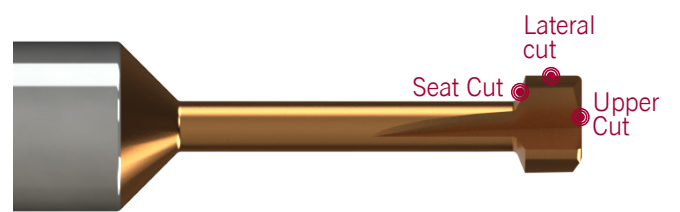
Direct to implant

Each tool is compatible depending on screw seating, metric and length

Precision milling tool. In the screwed angled structure direct to implant, it is used to mill the screw seating and to increase the internal diameter of the straight channel.



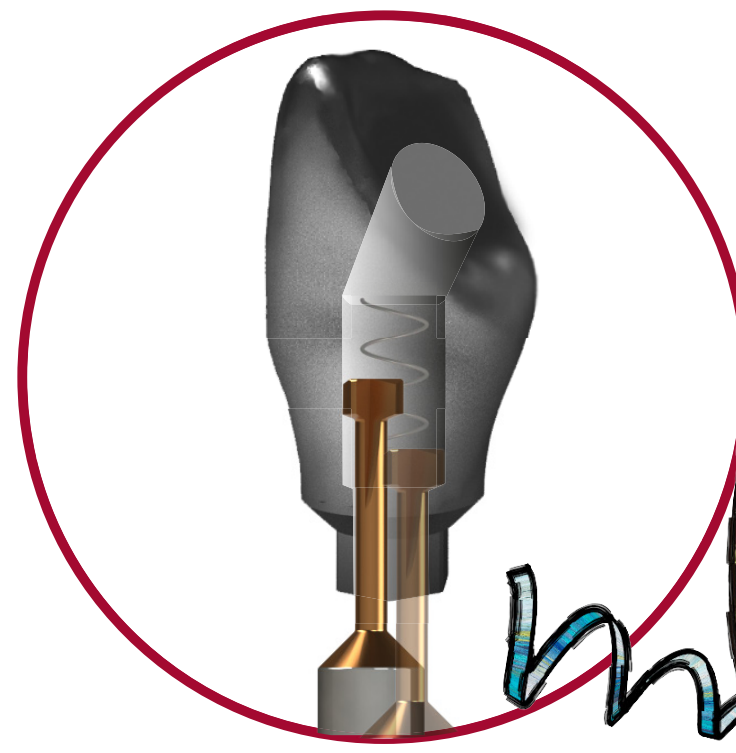
There are 3 cutting wing-tips with 3 different cutting area each, to mill the screw seating and to increase the internal diameter of the straight channel.



STEP 1:
Crown with pre drill.

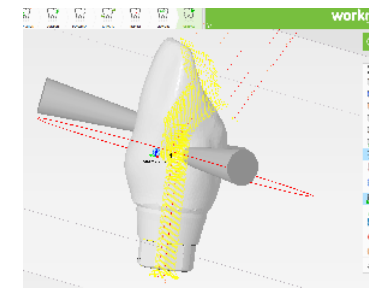


STEP 2:
Crown with Angled channel.

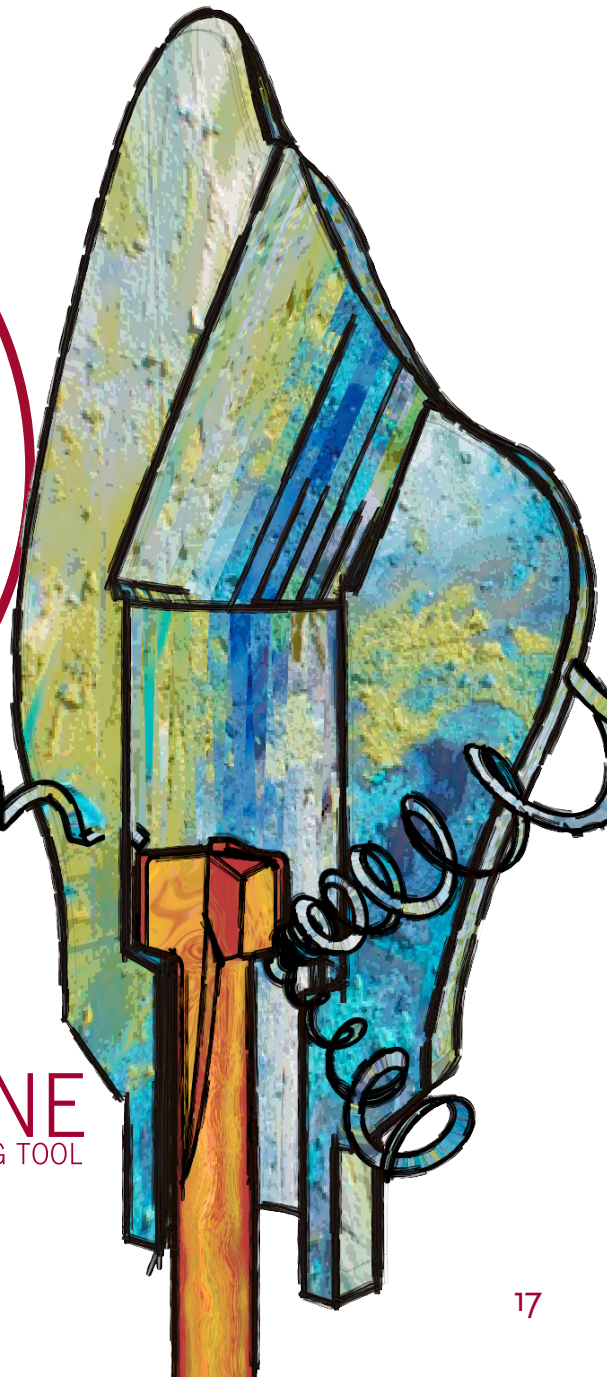


STEP 3:
Crown with Dynamic Milling Tool.
Milling the screw seat and increasing the diameter of the straight channel.

TESTED and VALIDATED by
worknc Dental



DMTONE
DYNAMIC MILLING TOOL

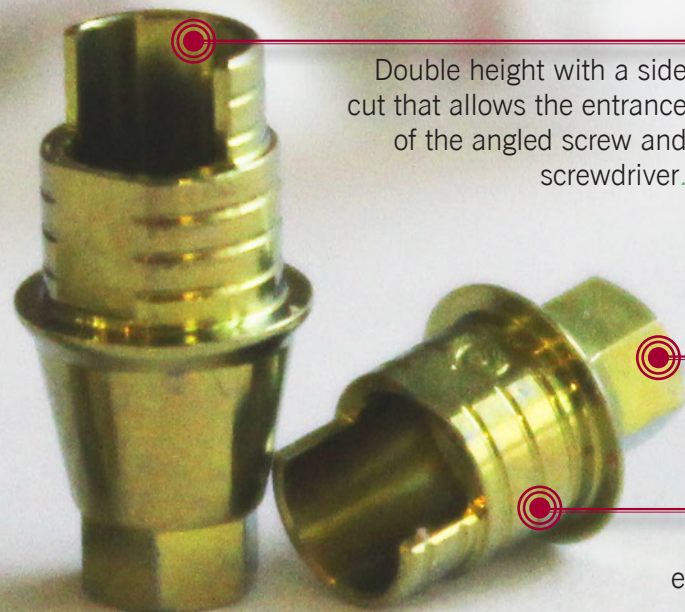


Dynamic TiBase®

Dynamic TiBases® are a technological contribution to the digital treatment for the angled systems development using CAD/CAM: the Dynamic system includes the Dynamic TiBase®, the dynamic screw-screwdriver set, scanbodies and digital libraries available for the main CAD softwares on the market: Exocad, 3Shape, Dentalwings and EGS.

To correct angulation up to 30°

Our grade 5 titanium bases are **gold anodized** to improve the work's aesthetic.

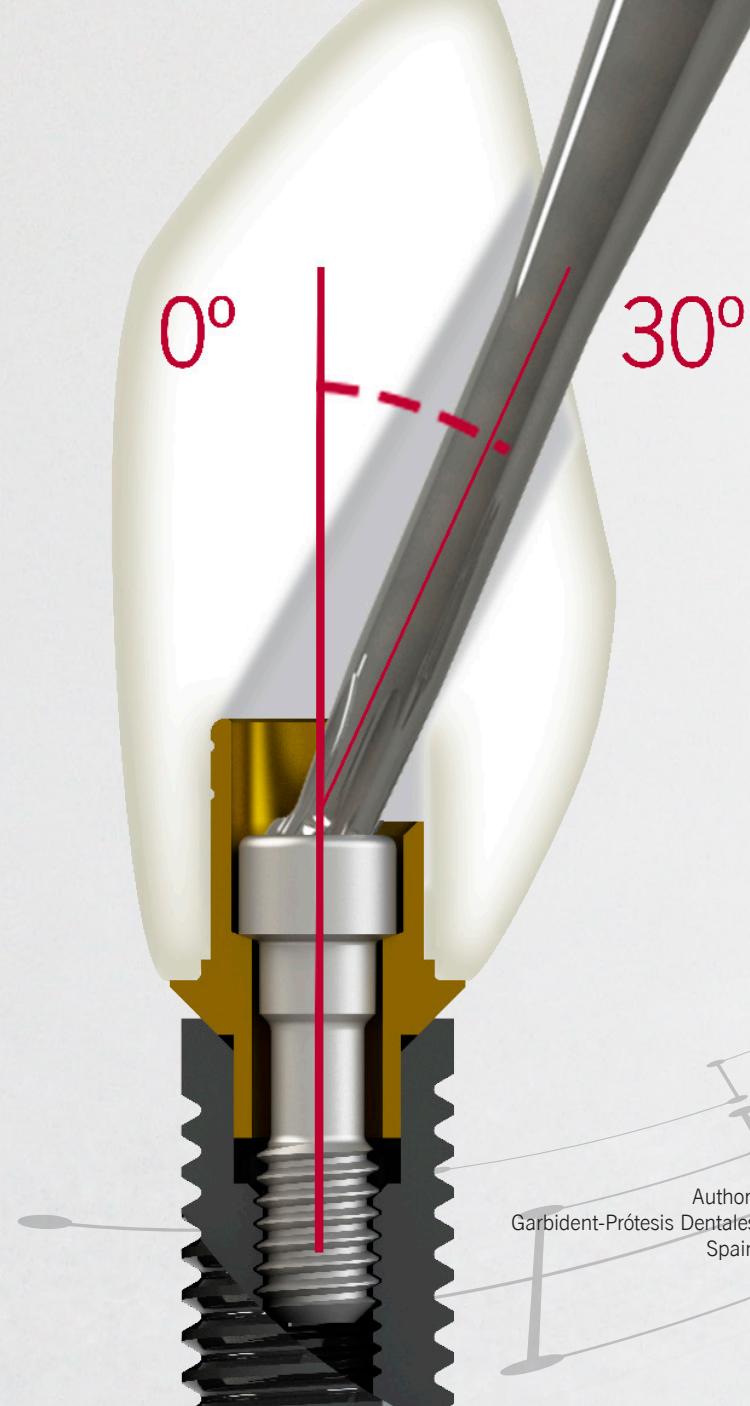


Double height with a side cut that allows the entrance of the angled screw and screwdriver.

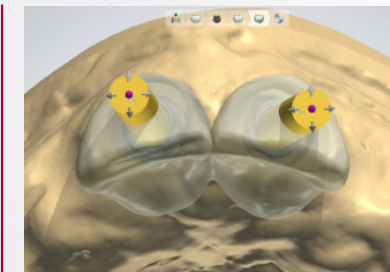
Precision machined up to +/- 5 microns

Exterior retentions that ensure a good cement grip

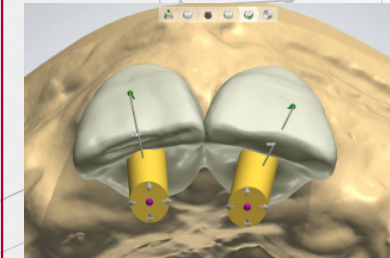
Narrow platform maximum angulation 25°
Regular/Wide platform maximum angulation 30°



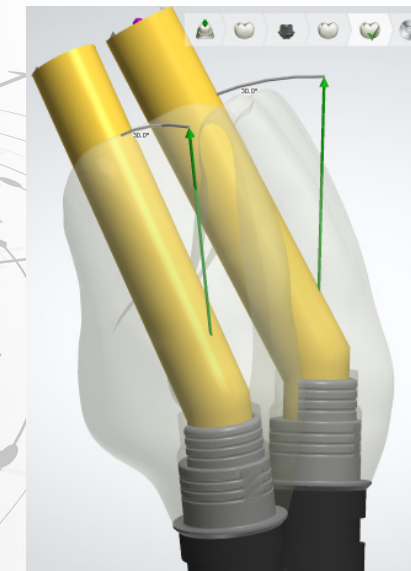
More than 50.000 cases solved with Dynamic TiBase®



Structure design without angulation.



Structure design with 30° angulation.

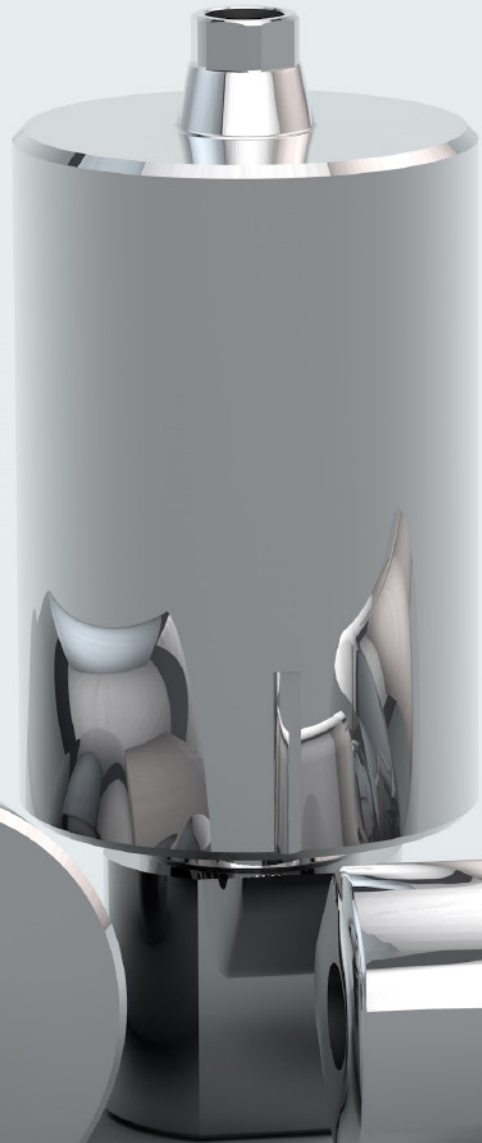


Angulation correction from 0 to 30°

Author:
Garbident-Prótesis Dentales
Spain

Pre-Milled

The new Titanium and Cobalt-chrome Pre-milled abutment blanks to mill fast and efficiently single crowns have a precise connection adjustments up to ± 5 microns, compatible with different implant systems. Our Pre-milled abutment blank has a back side engagement with own V geometry which precisely ensures its position in the machine, having a unique engagement system.

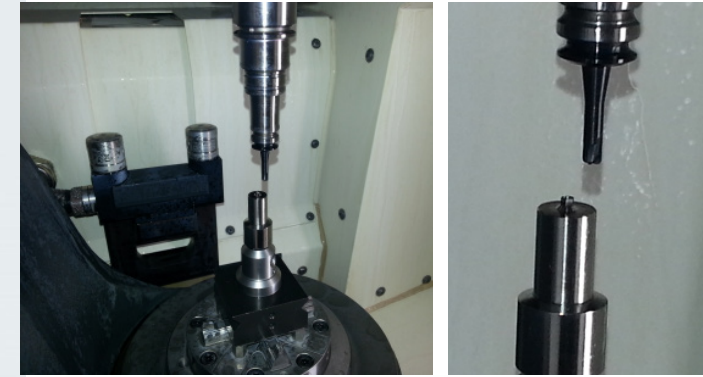
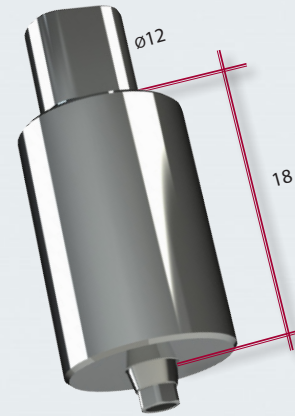


Materials: **Titanium**
Cobalt-chrome, which allows to apply ceramics directly

Precision machined up to ± 5 microns

A unique universal support for all blanks

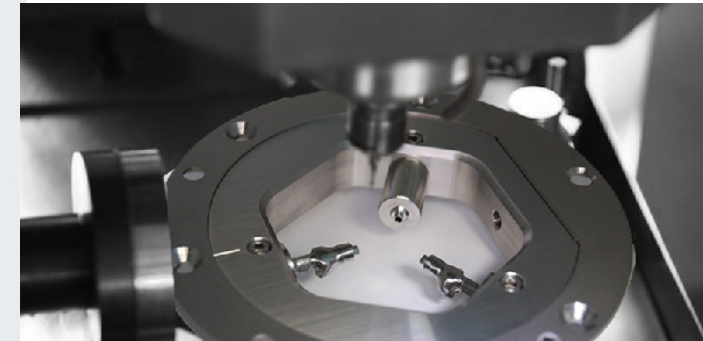
Optimized for a better milling strategy



CNC Grip

Grip for machines with rotatory head compatible with EROWA 10x10 system.

Grip for 98-100 disc



Universal disc grip of 98 mm diameter for metal milling machines to position fast and precisely 3 pre-milled abutment blanks with engagement on the back side of the implant connection.



Fastened with V geometry

The backside fastening system protects the connection to be free of mechanical stress during the milling process.



Titanium grade V
ISO 5832-3

To cement single crowns

Cobalt-Chrome
ISO 5832-12

To apply ceramics directly

Software CAD-CAM

CAD/CAM technology now represents the most innovative approaching in the fixed prostheses development and is a progress over conventional dentistry, allowing extremely precise design and high quality restorations.

3shape
exocad

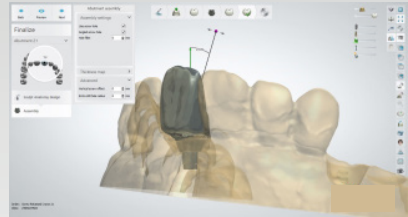
dental wings



There are different **working options** with the libraries:

- ||➔ Direct to Implant
- ||➔ Digital Analog
- ||➔ Dynamic TiBase®
- ||➔ Pre-Milled
- ||➔ Standard Library
- ||➔ Premium Library

Direct to implant CAD



3shape

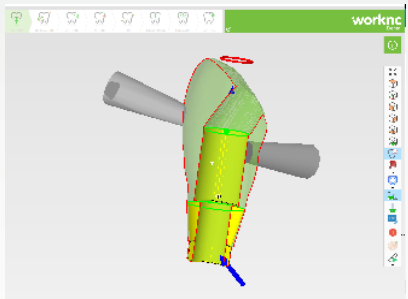


exocad

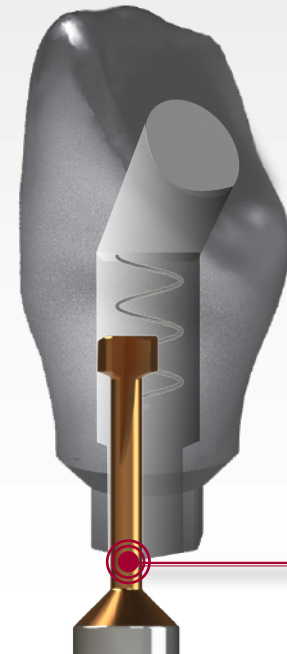


dental wings

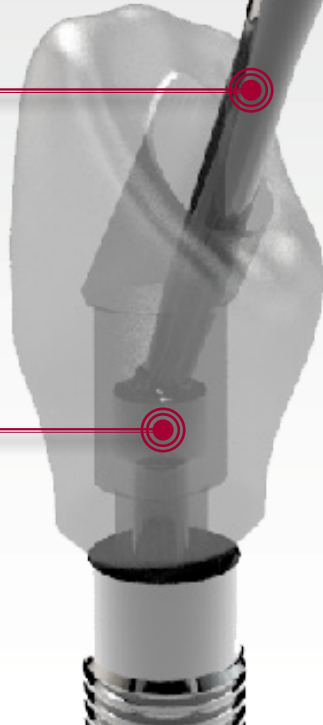
CAM Tested CAM Software angulated Direct to implant



worknc
Dental



Dynamic Milling Tool



Dynamic Screwdriver

Dynamic Screw



Standard CAD Library

To design the aesthetic part of the prosthesis

The real connection is validated in CAM Software



Premium CAD Library

To design the aesthetic part of the prosthesis. With Premium Library implant connection in CAD is with nominal values.

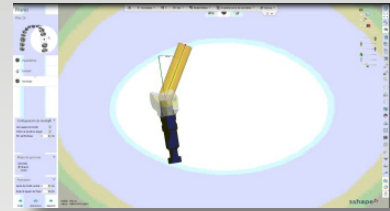
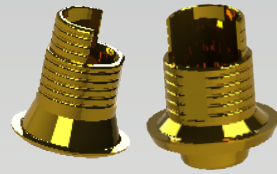
Allows to mill implant connection CAD files

Customer mills with nominal values. If necessary it is possible to adjust the connection in CAM or Machine*

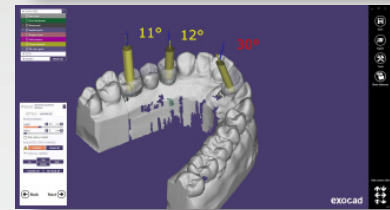
*To mill direct to implant with any CAM software

Customized Library for each customer. We adjust the connection in CAD for each customer until validated the connection

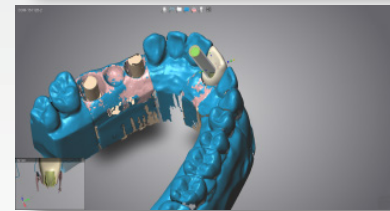
Dynamic TiBase® CAD



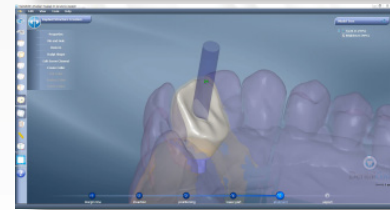
3shape



exocad



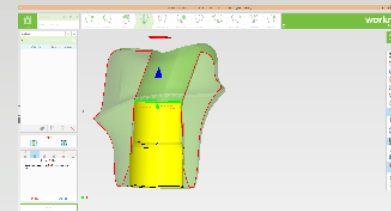
dental wings



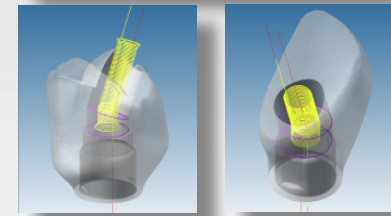
egs
Enhanced Geometry Solutions

CAM

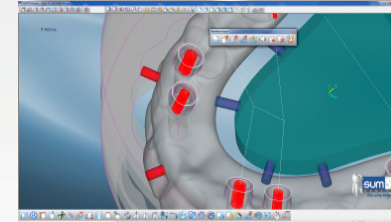
Tested CAM Software



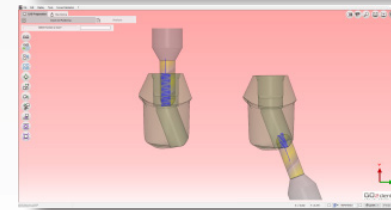
worknc
Dental



hyperDENT
COMPACT CLASSIC OPTIONS



sum31
DENTAL
One step beyond

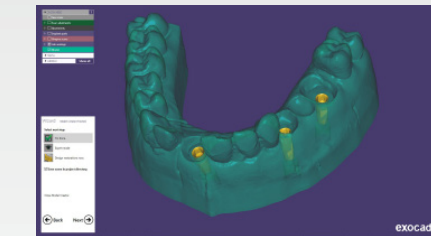


GO2 dental
cam for dental labs

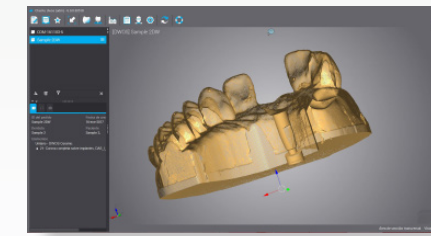
Digital Analog CAD - CAM



3shape
Model Builder



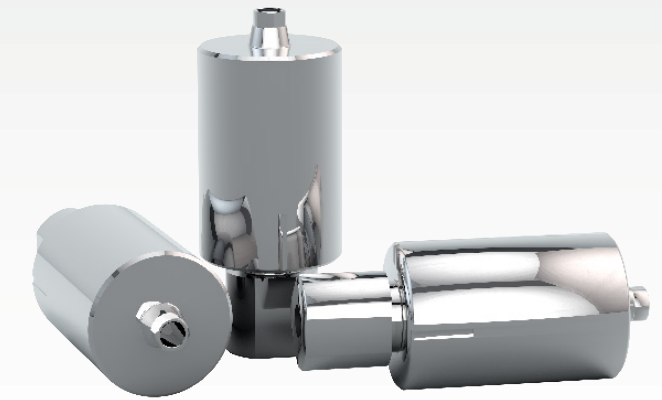
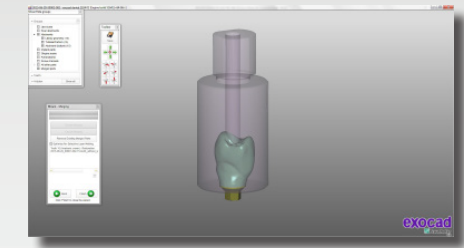
exocad
Model Creator



dental wings
Model Builder

Pre-milled CAD

3shape
exocad
dental wings



INTRAORAL SCANBODY

MODEL	IMPLANT Ø	PLATFORM	SCANBODY	HEIGHT mm	INTRAORAL LIBRARY CODE	ADAPTOR	DIGITAL ANALOG
I2	3,5/3,75/4,2/4,5/	Standard	52.410.101.01-2	10	DAS_I_10_0040	50.312.040.01-2	34.612.040.01-2
			52.412.101.01-2	12	DAS_I_12_0040		
	5/6	Standard	52.410.101.01-2	10	DAS_I_10_0040	50.312.040.01-2	34.612.040.01-2
			52.412.101.01-2	12	DAS_I_12_0040		
I22	3,75/4,22	Standard	52.410.101.01-2	10	DAS_I_10_0040	50.312.040.01-2	34.612.040.01-2
			52.412.101.01-2	12	DAS_I_12_0040		
I5	3,5/3,75/4,2/4,5/	Standard	52.410.101.01-2	10	DAS_I_10_0040	50.312.040.01-2	34.612.040.01-2
			52.412.101.01-2	12	DAS_I_12_0040		
	5/6/7/8	Standard	52.410.101.01-2	10	DAS_I_10_0040	50.312.040.01-2	34.612.040.01-2
			52.412.101.01-2	12	DAS_I_12_0040		
I55	3,75/4,2/4,5	Standard	52.410.101.01-2	10	DAS_I_10_0040	50.312.040.01-2	34.612.040.01-2
			52.412.101.01-2	12	DAS_I_12_0040		
	5/6/7/8	Standard	52.410.101.01-2	10	DAS_I_10_0040	50.312.040.01-2	34.612.040.01-2
			52.412.101.01-2	12	DAS_I_12_0040		
I10	4,2/5	Standard	52.410.101.01-2	10	DAS_I_10_0040	50.312.040.01-2	34.612.040.01-2
			52.412.101.01-2	12	DAS_I_12_0040		
I15	6/7/8	Standard	52.410.101.01-2	10	DAS_I_10_0040	50.312.040.01-2	34.612.040.01-2
			52.412.101.01-2	12	DAS_I_12_0040		

DYNAMIC TI-BASE®		SCREWS		PRE-MILLED		DYNAMIC MILLING TOOL		
NON-ENGAGING (R) ENGAGING (NR)	GINGIVAL HEIGHT	DYNAMIC SCREW	STRAIGHT SCREW	COBALT-CHROME	TITANIUM	DYNAMIC MILLING TOOL	SHANK	
31.322.040.01-2	R	0,6	41.317.071.01-2	40.317.004.01-2	32.212.040.01-2	32.312.040.01-2	33.370.716.01-2	3
31.312.040.01-2	NR						33.470.716.01-2	4
31.322.040.01-2	R	0,6	41.317.071.01-2	40.317.004.01-2	32.212.040.01-2	32.312.040.01-2	33.370.716.01-2	3
31.312.040.01-2	NR						33.470.716.01-2	4
31.322.040.01-2	R	0,6	41.317.071.01-2	40.317.004.01-2	32.212.040.01-2	32.312.040.01-2	33.370.716.01-2	3
31.312.040.01-2	NR						33.470.716.01-2	4
31.322.040.01-2	R	0,6	41.317.071.01-2	40.317.004.01-2	32.212.040.01-2	32.312.040.01-2	33.370.716.01-2	3
31.312.040.01-2	NR						33.470.716.01-2	4
31.322.040.01-2	R	0,6	41.317.071.01-2	40.317.004.01-2	32.212.040.01-2	32.312.040.01-2	33.370.716.01-2	3
31.312.040.01-2	NR						33.470.716.01-2	4
31.322.040.01-2	R	0,6	41.317.071.01-2	40.317.004.01-2	32.212.040.01-2	32.312.040.01-2	33.370.716.01-2	3
31.312.040.01-2	NR						33.470.716.01-2	4
31.322.040.01-2	R	0,6	41.317.071.01-2	40.317.004.01-2	32.212.040.01-2	32.312.040.01-2	33.370.716.01-2	3
31.312.040.01-2	NR						33.470.716.01-2	4

INTRAORAL SCANBODY

MODEL	IMPLANT Ø	PLATFORM	SCANBODY	HEIGHT mm	INTRAORAL LIBRARY CODE	ADAPTOR	DIGITAL ANALOG
External Hex	3,3	NP 3,5	52.410.103.01-2	10	DAS_I_10_0023	50.312.023.01-2	34.612.023.01-2
			52.412.103.01-2	12	DAS_I_12_0023		
	3,75/4	RP 4,1	52.410.101.01-2	10	DAS_I_10_0024	50.313.024.01-2	34.613.024.01-2
			52.412.101.01-2	12	DAS_I_12_0024		
Infinity TRI-CAM	3,5	3,5	52.410.108.01-2	10	DAS_I_10_0026	50.312.026.01-2	34.612.026.01-2
			52.412.108.01-2	12	DAS_I_12_0026		
	4,3	4,3	52.410.109.01-2	10	DAS_I_10_0027	50.313.027.01-2	34.613.027.01-2
			52.412.109.01-2	12	DAS_I_12_0027		
Infinity Internal Hex	3,7/4,1	3,5	52.410.101.01-2	10	DAS_I_10_0040	50.312.040.01-2	34.612.040.01-2
			52.412.101.01-2	12	DAS_I_12_0040		
	4,7/5,1	4,5	52.410.102.01-2	10	DAS_I_10_0041	50.313.041.01-2	34.613.041.01-2
			52.412.102.01-2	12	DAS_I_12_0041		

DYNAMIC TI-BASE®		SCREWS		PRE-MILLED		DYNAMIC MILLING TOOL	
------------------	--	--------	--	------------	--	----------------------	--

NON-ENGAGING (R) ENGAGING (NR)		GINGIVAL HEIGHT	DYNAMIC SCREW	STRAIGHT SCREW	COBALT-CHROME	TITANIUM	DYNAMIC MILLING TOOL	SHANK
31.322.023.01-2	R	0,3	41.316.059.01-2	40.316.008.01-2	--	--	33.390.805.01-2	3
31.312.023.01-2	NR						33.490.805.01-2	4
31.323.024.01-2	R	0,3	41.320.060.01-2	40.320.008.01-2	32.213.024.01-2	32.313.024.01-2	33.390.716.01-2	3
31.313.024.01-2	NR						33.490.716.01-2	4
31.322.026.01-2	R	0,5	41.318.075.01-2	40.318.008.01-2	--	--	33.390.805.01-2	3
31.312.026.01-2	NR						33.490.805.01-2	4
31.322.026.02-2	R	1,2	41.318.075.01-2	40.318.008.01-2	--	--	33.690.805.01-2	6
31.312.026.02-2	NR							
31.323.027.01-2	R	0,3	41.320.090.01-2	40.320.008.03-2	32.213.027.01-2	32.313.027.01-2	33.390.958.01-2	3
31.313.027.01-2	NR						33.490.958.01-2	4
31.323.027.02-2	R	1,2	41.320.090.01-2	40.320.008.03-2	32.213.027.01-2	32.313.027.01-2	33.690.958.01-2	6
31.313.027.02-2	NR							
31.322.040.01-2	R	0,6	41.317.071.01-2	40.317.004.01-2	32.212.040.01-2	32.312.040.01-2	33.370.716.01-2	3
31.312.040.01-2	NR						33.470.716.01-2	4
31.323.041.01-2	R	0,4	41.317.071.01-2	40.317.004.01-2	32.213.041.01-2	32.313.041.01-2	33.370.716.01-2	3
31.313.041.01-2	NR						33.470.716.01-2	4
							33.670.716.01-2	6

INTRAORAL SCANBODY

MODEL	IMPLANT Ø	PLATFORM	SCANBODY	HEIGHT mm	INTRAORAL LIBRARY CODE	ADAPTOR	DIGITAL ANALOG
Swell	3,3	3,45	52.410.101.01-2	10	DAS_I_10_0040	50.312.040.01-2	34.612.040.01-2
			52.412.101.01-2	12	DAS_I_12_0040		
	3,75/4,2	3,6	52.410.101.01-2	10	DAS_I_10_0040	50.312.040.01-2	34.612.040.01-2
			52.412.101.01-2	12	DAS_I_12_0040		
	5	4	52.410.101.01-2	10	DAS_I_10_0040	50.312.040.01-2	34.612.040.01-2
			52.412.101.01-2	12	DAS_I_12_0040		
	6	4,6	52.410.101.01-2	10	DAS_I_10_0040	50.312.040.01-2	34.612.040.01-2
			52.412.101.01-2	12	DAS_I_12_0040		
Touareg-S / Touareg-OS	3,5	3,45	52.410.101.01-2	10	DAS_I_10_0040	50.312.040.01-2	34.612.040.01-2
			52.412.101.01-2	12	DAS_I_12_0040		
	3,75/4,2	3,6	52.410.101.01-2	10	DAS_I_10_0040	50.312.040.01-2	34.612.040.01-2
			52.412.101.01-2	12	DAS_I_12_0040		
	5	4	52.410.101.01-2	10	DAS_I_10_0040	50.312.040.01-2	34.612.040.01-2
			52.412.101.01-2	12	DAS_I_12_0040		
	6	5	52.410.101.01-2	10	DAS_I_10_0040	50.312.040.01-2	34.612.040.01-2
			52.412.101.01-2	12	DAS_I_12_0040		
Touareg CloseFit	3,5	RP	52.410.103.01-2	10	DAS_I_10_0021	50.312.021.01-2	34.612.021.01-2
			52.412.103.01-2	12	DAS_I_12_0021		
	4,3/5	WP	52.410.101.01-2	10	DAS_I_10_0022	50.313.022.01-2	34.613.022.01-2
			52.412.101.01-2	12	DAS_I_12_0022		

DYNAMIC TI-BASE®		SCREWS		PRE-MILLED		DYNAMIC MILLING TOOL		
NON-ENGAGING	(R) ENGAGING (NR)	GINGIVAL HEIGHT	DYNAMIC SCREW	STRAIGHT SCREW	COBALT-CHROME	TITANIUM	DYNAMIC MILLING TOOL	SHANK

NON-ENGAGING	(R) ENGAGING (NR)	GINGIVAL HEIGHT	DYNAMIC SCREW	STRAIGHT SCREW	COBALT-CHROME	TITANIUM	DYNAMIC MILLING TOOL	SHANK
31.322.040.01-2	R	0,6	41.317.071.01-2	40.317.004.01-2	32.212.040.01-2	32.312.040.01-2	33.370.716.01-2	3
31.312.040.01-2	NR						33.470.716.01-2	4
31.322.040.01-2	R	0,6	41.317.071.01-2	40.317.004.01-2	32.212.040.01-2	32.312.040.01-2	33.370.716.01-2	3
31.312.040.01-2	NR						33.470.716.01-2	4
31.322.040.01-2	R	0,6	41.317.071.01-2	40.317.004.01-2	32.212.040.01-2	32.312.040.01-2	33.370.716.01-2	3
31.312.040.01-2	NR						33.470.716.01-2	4
31.322.040.01-2	R	0,6	41.317.071.01-2	40.317.004.01-2	32.212.040.01-2	32.312.040.01-2	33.370.716.01-2	3
31.312.040.01-2	NR						33.470.716.01-2	4
31.322.040.01-2	R	0,6	41.317.071.01-2	40.317.004.01-2	32.212.040.01-2	32.312.040.01-2	33.370.716.01-2	3
31.312.040.01-2	NR						33.470.716.01-2	4
31.322.040.01-2	R	0,6	41.317.071.01-2	40.317.004.01-2	32.212.040.01-2	32.312.040.01-2	33.370.716.01-2	3
31.312.040.01-2	NR						33.470.716.01-2	4
31.322.021.01-2	R	1,5	41.316.073.01-2	40.316.008.02-2	--	--	33.335.754.01-2	3
31.312.021.01-2	NR						33.435.754.01-2	4
31.323.022.01-2	R	1,3	41.320.075.01-2	40.320.008.02-2	32.213.022.01-2	32.313.022.01-2	33.335.758.01-2	3
31.313.022.01-2	NR						33.435.758.01-2	4
31.323.022.02-2	R	2	41.320.075.01-2	40.320.008.02-2	32.213.022.01-2	32.313.022.01-2	33.635.758.01-2	4
31.313.022.02-2	NR						33.635.758.01-2	6

INTRAORAL SCANBODY

MODEL	IMPLANT Ø	PLATFORM	SCANBODY	HEIGHT mm	INTRAORAL LIBRARY CODE	ADAPTOR	DIGITAL ANALOG
Alphabio External		Narrow	52.410.103.01-2	10	DAS_I_10_0023	50.312.023.01-2	34.612.023.01-2
			52.410.103.01-2	12	DAS_I_12_0023		
		Regular	52.410.101.01-2	10	DAS_I_10_0024	50.313.024.01-2	34.613.024.01-2
			52.412.101.01-2	12	DAS_I_12_0024		
SPI	3,3/3,75/4,2/5/6	Universal	52.410.101.01-2	10	DAS_I_10_0040	50.312.040.01-2	34.612.040.01-2
			52.412.101.01-2	12	DAS_I_12_0040		
ICE	3,7/3,75/4,2/4,65/5,3	Universal	52.410.101.01-2	10	DAS_I_10_0040	50.312.040.01-2	34.612.040.01-2
			52.412.101.01-2	12	DAS_I_12_0040		
DFI	3,3/3,75/4,2/4,5	Universal	52.410.101.01-2	10	DAS_I_10_0040	50.312.040.01-2	34.612.040.01-2
			52.412.101.01-2	12	DAS_I_12_0040		
ATID	3,3/3,75/4,2/5/6	Universal	52.410.101.01-2	10	DAS_I_10_0040	50.312.040.01-2	34.612.040.01-2
			52.412.101.01-2	12	DAS_I_12_0040		

DYNAMIC TI-BASE®		SCREWS		PRE-MILLED		DYNAMIC MILLING TOOL	
------------------	--	--------	--	------------	--	----------------------	--

NON-ENGAGING (R) ENGAGING (NR)		GINGIVAL HEIGHT	DYNAMIC SCREW	STRAIGHT SCREW	COBALT-CHROME	TITANIUM	DYNAMIC MILLING TOOL	SHANK
31.322.023.01-2	R	0,3	41.316.059.01-2	40.316.008.01-2	--	--	33.390.805.01-2	3
31.312.023.01-2	NR						33.490.805.01-2	4
31.323.024.01-2	R	0,3	41.320.060.01-2	40.320.008.01-2	32.213.024.01-2	32.313.024.01-2	33.390.716.01-2	3
31.313.024.01-2	NR						33.490.716.01-2	4
31.322.040.01-2	R	0,6	41.317.071.01-2	40.317.004.01-2	32.212.040.01-2	32.312.040.01-2	33.490.716.01-2	3
31.312.040.01-2	NR						33.470.716.01-2	4
31.322.040.01-2	R	0,6	41.317.071.01-2	40.317.004.01-2	32.212.040.01-2	32.312.040.01-2	33.370.716.01-2	3
31.312.040.01-2	NR						33.470.716.01-2	4
31.322.040.01-2	R	0,6	41.317.071.01-2	40.317.004.01-2	32.212.040.01-2	32.312.040.01-2	33.470.716.01-2	3
31.312.040.01-2	NR						33.670.716.01-2	4
31.322.040.01-2	R	0,6	41.317.071.01-2	40.317.004.01-2	32.212.040.01-2	32.312.040.01-2	33.470.716.01-2	3
31.312.040.01-2	NR						33.470.716.01-2	4
31.322.040.01-2	R	0,6	41.317.071.01-2	40.317.004.01-2	32.212.040.01-2	32.312.040.01-2	33.470.716.01-2	3
31.312.040.01-2	NR						33.670.716.01-2	4

Compatible with - ANCLADEN

INTRAORAL SCANBODY

MODEL	IMPLANT Ø	PLATFORM	SCANBODY	HEIGHT mm	INTRAORAL LIBRARY CODE	ADAPTOR	DIGITAL ANALOG
Anclalock	3,75/4,25/5	3,5	52.410.101.01-2	10	DAS_I_10_0040	50.312.040.01-2	34.612.040.01-2
			52.412.101.01-2	12	DAS_I_12_0040		

Compatible with - ANTHOGRYR

INTRAORAL SCANBODY

MODEL	IMPLANT Ø	PLATFORM	SCANBODY	HEIGHT mm	INTRAORAL LIBRARY CODE	ADAPTOR	DIGITAL ANALOG
Anthofit HE	3,5/3,75/4	R (4,1)	52.410.101.01-2	10	DAS_I_10_0024	50.313.024.01-2	34.613.024.01-2
			52.412.101.01-2	12	DAS_I_12_0024		
Ossfit	3,5/4,2	4,8	52.410.110.01-2	10	DAS_I_10_0037	50.313.037.01-2	34.613.037.01-2
			52.412.110.01-2	12	DAS_I_12_0037		

DYNAMIC TI-BASE® **SCREWS** **PRE-MILLED** **DYNAMIC MILLING TOOL**

NON-ENGAGING (R) ENGAGING (NR)	GINGIVAL HEIGHT	DYNAMIC SCREW	STRAIGHT SCREW	COBALT-CHROME	TITANIUM	DYNAMIC MILLING TOOL	SHANK
31.322.040.01-2	R	41.317.071.01-2	40.317.004.01-2	32.212.040.01-2	32.312.040.01-2	33.370.716.01-2	3
31.312.040.01-2	NR					0,6	33.470.716.01-2
						33.670.716.01-2	6

DYNAMIC TI-BASE® **SCREWS** **PRE-MILLED** **DYNAMIC MILLING TOOL**

NON-ENGAGING (R) ENGAGING (NR)	GINGIVAL HEIGHT	DYNAMIC SCREW	STRAIGHT SCREW	COBALT-CHROME	TITANIUM	DYNAMIC MILLING TOOL	SHANK
31.323.024.01-2	R	41.320.065.01-2	40.320.008.01-2	32.213.024.01-2	32.313.024.01-2	33.390.716.01-2	3
31.313.024.01-2	NR					0,3	33.490.716.01-2
						33.690.716.01-2	6
31.323.037.01-2	R	41.320.067.01-2	40.320.007.01-2	32.213.037.01-2	32.313.037.01-2	33.315.708.01-2	3
31.313.037.01-2	NR					0,6	33.415.708.01-2
						33.615.708.01-2	6

INTRAORAL SCANBODY

MODEL	IMPLANT Ø	PLATFORM	SCANBODY	HEIGHT mm	INTRAORAL LIBRARY CODE	ADAPTOR	DIGITAL ANALOG
Smart	3,75/4,2/4,5	3,75	52.410.101.01-2	10	DAS_I_10_0040	50.312.040.01-2	34.612.040.01-2
			52.412.101.01-2	12	DAS_I_12_0040		
Classic	3,75/4,2/4,5	3,75	52.410.101.01-2	10	DAS_I_10_0040	50.312.040.01-2	34.612.040.01-2
			52.412.101.01-2	12	DAS_I_12_0040		
	3,3/3,75/4,2/5/6	3,75	52.410.101.01-2	10	DAS_I_10_0040	50.312.040.01-2	34.612.040.01-2
			52.412.101.01-2	12	DAS_I_12_0040		
Premium	3,3/3,75/4,2/5/6	3,75	52.410.101.01-2	10	DAS_I_10_0040	50.312.040.01-2	34.612.040.01-2
			52.412.101.01-2	12	DAS_I_12_0040		

DYNAMIC TI-BASE®		SCREWS		PRE-MILLED		DYNAMIC MILLING TOOL	
------------------	--	--------	--	------------	--	----------------------	--

NON-ENGAGING (R) ENGAGING (NR)		GINGIVAL HEIGHT	DYNAMIC SCREW	STRAIGHT SCREW	COBALT-CHROME	TITANIUM	DYNAMIC MILLING TOOL	SHANK
31.322.040.01-2	R	0,6	41.317.071.01-2	40.317.004.01-2	32.212.040.01-2	32.312.040.01-2	33.370.716.01-2	3
31.312.040.01-2	NR						33.470.716.01-2	4
31.322.040.01-2	R	0,6	41.317.071.01-2	40.317.004.01-2	32.212.040.01-2	32.312.040.01-2	33.370.716.01-2	3
31.312.040.01-2	NR						33.470.716.01-2	4
31.322.040.01-2	R	0,6	41.317.071.01-2	40.317.004.01-2	32.212.040.01-2	32.312.040.01-2	33.370.716.01-2	3
31.312.040.01-2	NR						33.470.716.01-2	4
31.322.040.01-2	R	0,6	41.317.071.01-2	40.317.004.01-2	32.212.040.01-2	32.312.040.01-2	33.370.716.01-2	3
31.312.040.01-2	NR						33.470.716.01-2	4

INTRAORAL SCANBODY

MODEL	IMPLANT Ø	PLATFORM	SCANBODY	HEIGHT mm	INTRAORAL LIBRARY CODE	ADAPTOR	DIGITAL ANALOG
Aqua	3,5/4	Aqua(Narrow)	52.410.103.01-2	10	DAS_I_10_0004	50.313.004.01-2	34.613.004.01-2
			52.412.103.01-2	12	DAS_I_12_0004		
Lilac	4,5/5	Lilac (Wide)	52.410.102.01-2	10	DAS_I_10_0005	50.314.005.01-2	34.614.005.01-2
			52.412.102.01-2	12	DAS_I_12_0005		

DYNAMIC TI-BASE® **SCREWS** **PRE-MILLED** **DYNAMIC MILLING TOOL**

NON-ENGAGING (R) ENGAGING (NR)		GINGIVAL HEIGHT	DYNAMIC SCREW	STRAIGHT SCREW	COBALT-CHROME	TITANIUM	DYNAMIC MILLING TOOL	SHANK
31.323.004.01-2 31.313.004.01-2	R NR	1	41.316.076.01-2	40.316.005.02-2	32.213.004.01-2	32.313.004.01-2	33.390.754.01-2	3
31.323.004.02-2 31.313.004.02-2	R NR	2					33.490.754.01-2 33.690.754.01-2	4 6
31.324.005.01-2 31.314.005.01-2	R NR	1	41.320.090.01-2	40.320.005.03-2	32.214.005.01-2	32.314.005.01-2	33.390.958.01-2	3
31.324.005.02-2 31.314.005.02-2	R NR	2					33.490.958.01-2 33.690.958.01-2	4 6

INTRAORAL SCANBODY

MODEL	IMPLANT Ø	PLATFORM	SCANBODY	HEIGHT mm	INTRAORAL LIBRARY CODE	ADAPTOR	DIGITAL ANALOG
HE	3,3/3,8/4/4,2/4,8//4,5/5	4,1	52.410.101.01-2	10	DAS_I_10_0024	50.313.024.01-2	34.613.024.01-2
			52.412.101.01-2	12	DAS_I_12_0024		
HI	3,1//3,5/4	3,5	52.410.101.01-2	10	DAS_I_10_0040	50.312.040.01-2	34.612.040.01-2
			52.412.101.01-2	12	DAS_I_12_0040		
	3,3/3,8/4/4,2/4,8//4,5/5	4,1	52.410.101.01-2	10	DAS_I_10_0040	50.312.040.01-2	34.612.040.01-2
			52.412.101.01-2	12	DAS_I_12_0040		
Transepithelial		Regular	52.410.111.01-2	10	DAS_I_10_0025	50.313.025.01-2	34.613.025.01-2

DYNAMIC TI-BASE® SCREWS PRE-MILLED DYNAMIC MILLING TOOL

NON-ENGAGING (R) ENGAGING (NR)	GINGIVAL HEIGHT	DYNAMIC SCREW	STRAIGHT SCREW	PRE-MILLED		DYNAMIC MILLING TOOL	
				COBALT-CHROME	TITANIUM	DYNAMIC MILLING TOOL	SHANK
31.323.024.01-2	R	41.320.060.01-2	40.320.008.01-2	32.213.024.01-2	32.313.024.01-2	33.390.716.01-2	3
31.313.024.01-2	NR					0,3	33.490.716.01-2
31.322.040.01-2	R	41.317.071.01-2	40.317.004.01-2	32.212.040.01-2	32.312.040.01-2	33.370.716.01-2	3
31.312.040.01-2	NR					0,6	33.470.716.01-2
31.322.040.01-2	R	41.317.071.01-2	40.317.004.01-2	32.212.040.01-2	32.312.040.01-2	33.370.716.01-2	3
31.312.040.01-2	NR					0,6	33.470.716.01-2
31.323.025.01-2	R	41.314.039.01-2	40.314.008.01-2	--	--	33.390.716.01-2	3
						33.490.716.01-2	4
						33.690.716.01-2	6

INTRAORAL SCANBODY

MODEL	IMPLANT Ø	PLATFORM	SCANBODY	HEIGHT mm	INTRAORAL LIBRARY CODE	ADAPTOR	DIGITAL ANALOG
3icon	3,3	Mini (Pink)	52.410.103.01-2	10	DAS_I_10_0023	50.312.023.01-2	34.612.023.01-2
			52.412.103.01-2	12	DAS_I_12_0023		
	3,75/4/4,3/4,5	Regular (Blue)	52.410.101.01-2	10	DAS_I_10_0024	50.313.024.01-2	34.613.024.01-2
			52.412.101.01-2	12	DAS_I_12_0024		
Aticon	3,5//4/4,5/5	Pink/Blue	52.410.102.01-2	10	DAS_I_10_0005	50.314.005.01-2	34.614.005.01-2
			52.412.102.01-2	12	DAS_I_12_0005		
Iticon	3,5/4,1/4,8	4,8	52.410.110.01-2	10	DAS_I_10_0037	50.313.037.01-2	34.613.037.01-2
			52.412.110.01-2	12	DAS_I_12_0037		

DYNAMIC TI-BASE® SCREWS PRE-MILLED DYNAMIC MILLING TOOL

NON-ENGAGING (R) ENGAGING (NR)		GINGIVAL HEIGHT	DYNAMIC SCREW	STRAIGHT SCREW	COBALT-CHROME	TITANIUM	DYNAMIC MILLING TOOL	SHANK
31.322.023.01-2	R	0,3	41.316.059.01-2	40.316.008.01-2	--	--	33.390.805.01-2	3
31.312.023.01-2	NR						33.490.805.01-2	4
31.323.024.01-2	R	0,3	41.320.060.01-2	40.320.008.01-2	32.213.024.01-2	32.313.024.01-2	33.390.716.01-2	3
31.313.024.01-2	NR						33.490.716.01-2	4
31.324.005.01-2	R	1	41.320.090.01-2	40.320.005.03-2	32.214.005.01-2	32.314.005.01-2	33.390.958.01-2	3
31.314.005.01-2	NR						33.490.958.01-2	4
31.324.005.02-2	R	2	41.320.090.01-2	40.320.005.03-2	32.214.005.01-2	32.314.005.01-2	33.690.958.01-2	6
31.314.005.02-2	NR						33.690.958.01-2	6
31.323.037.01-2	R	0,6	41.320.067.01-2	40.320.007.01-2	32.213.037.01-2	32.313.037.01-2	33.315.708.01-2	3
31.313.037.01-2	NR						33.415.708.01-2	4
							33.615.708.01-2	6

INTRAORAL SCANBODY

MODEL	IMPLANT Ø	PLATFORM	SCANBODY	HEIGHT mm	INTRAORAL LIBRARY CODE	ADAPTOR	DIGITAL ANALOG
Tapered Internal	3/3,8/4,6	3,5 (Yellow)	52.410.101.01-2	10	DAS_I_10_0040	50.312.040.01-2	34.612.040.01-2
			52.412.101.01-2	12	DAS_I_12_0040		
	4,6/5,8	4,5 (Green)	52.410.102.01-2	10	DAS_I_10_0041	50.313.041.01-2	34.613.041.01-2
			52.412.102.01-2	12	DAS_I_12_0041		
Internal	3,5/4	3,5 (Yellow)	52.410.101.01-2	10	DAS_I_10_0040	50.312.040.01-2	34.612.040.01-2
			52.412.101.01-2	12	DAS_I_12_0040		
	4/5	4,5 (Green)	52.410.102.01-2	10	DAS_I_10_0041	50.313.041.01-2	34.613.041.01-2
			52.412.102.01-2	12	DAS_I_12_0041		

DYNAMIC TI-BASE®		SCREWS		PRE-MILLED		DYNAMIC MILLING TOOL	
------------------	--	--------	--	------------	--	----------------------	--

NON-ENGAGING (R) ENGAGING (NR)		GINGIVAL HEIGHT	DYNAMIC SCREW	STRAIGHT SCREW	COBALT-CHROME	TITANIUM	DYNAMIC MILLING TOOL	SHANK
31.322.040.01-2	R	0,6	41.317.071.01-2	40.317.004.01-2	32.212.040.01-2	32.312.040.01-2	33.370.716.01-2	3
31.312.040.01-2	NR						33.470.716.01-2	4
31.323.041.01-2	R	0,4	41.317.071.01-2	40.317.004.01-2	32.213.041.01-2	32.313.041.01-2	33.370.716.01-2	3
31.313.041.01-2	NR						33.470.716.01-2	4
31.322.040.01-2	R	0,6	41.317.071.01-2	40.317.004.01-2	32.212.040.01-2	32.312.040.01-2	33.370.716.01-2	3
31.312.040.01-2	NR						33.470.716.01-2	4
31.323.041.01-2	R	0,4	41.317.071.01-2	40.317.004.01-2	32.213.041.01-2	32.313.041.01-2	33.370.716.01-2	3
31.313.041.01-2	NR						33.470.716.01-2	4
31.313.041.01-2	NR						33.670.716.01-2	6

INTRAORAL SCANBODY

MODEL	IMPLANT Ø	PLATFORM	SCANBODY	HEIGHT mm	INTRAORAL LIBRARY CODE	ADAPTOR	DIGITAL ANALOG
Osseotite	3,25	3,4	52.410.104.01-2	10	DAS_I_10_0003	50.312.003.01-2	34.612.003.01-2
			52.410.101.01-2	10	DAS_I_10_0024		
	4	4,1	52.412.101.01-2	12	DAS_I_12_0024	50.313.024.01-2	34.613.024.01-2
Certain	3,25/4	3,4	52.410.103.01-2	10	DAS_I_10_0001	50.312.001.01-2	34.612.001.01-2
			52.412.103.01-2	12	DAS_I_12_0001		
	4/5	4,1	52.410.101.01-2	10	DAS_I_10_0002	50.313.002.01-2	34.613.002.01-2
			52.412.101.01-2	12	DAS_I_12_0002		
Low Profile		Universal	52.410.111.01-2	10	DAS_I_10_0025	50.313.025.01-2	34.613.025.01-2

DYNAMIC TI-BASE® **SCREWS** **PRE-MILLED** **DYNAMIC MILLING TOOL**

NON-ENGAGING (R) ENGAGING (NR)		GINGIVAL HEIGHT	DYNAMIC SCREW	STRAIGHT SCREW	COBALT-CHROME	TITANIUM	DYNAMIC MILLING TOOL	SHANK
31.322.003.01-2	R	0,3	41.320.065.01-2	40.320.003.02-2	--	--	33.390.716.01-2	3
31.312.003.01-2	NR						33.490.716.01-2	4
31.323.024.01-2	R	0,3	41.320.060.01-2	40.320.003.02-2	32.213.024.01-2	32.313.024.01-2	33.390.716.01-2	3
31.313.024.01-2	NR						33.490.716.01-2	4
31.322.001.01-2	R	0,3	41.316.084.01-2	40.316.003.01-2	--	--	33.390.754.01-2	3
31.312.001.01-2	NR						33.490.754.01-2	4
31.322.001.02-2	R	1,2					33.690.754.01-2	6
31.312.001.02-2	NR							
31.323.002.01-2	R	0,3	41.316.084.01-2	40.316.003.01-2	32.213.002.01-2	32.313.002.01-2	33.390.805.01-2	3
31.313.002.01-2	NR						33.490.805.01-2	4
31.323.002.02-2	R	1,2					33.690.805.01-2	6
31.313.002.02-2	NR							
31.323.025.01-2	R	0,3	41.314.039.01-2	40.314.008.01-2	--	--	33.390.716.01-2	3
	NR						33.490.716.01-2	4

INTRAORAL SCANBODY

MODEL	IMPLANT Ø	PLATFORM	SCANBODY	HEIGHT mm	INTRAORAL LIBRARY CODE	ADAPTOR	DIGITAL ANALOG
External Hexagon	3,45	3,45	52.410.104.01-2	10	DAS_I_10_0003	50.312.003.01-2	34.612.003.01-2

DYNAMIC TI-BASE® **SCREWS** **PRE-MILLED** **DYNAMIC MILLING TOOL**

NON-ENGAGING (R) ENGAGING (NR)		GINGIVAL HEIGHT	DYNAMIC SCREW	STRAIGHT SCREW	COBALT-CHROME	TITANIUM	DYNAMIC MILLING TOOL	SHANK
31.322.003.01-2	R	0,3	41.320.065.01-2	40.320.003.02-2	--	--	33.390.716.01-2	3
31.312.003.01-2	NR						33.490.716.01-2	4
							33.690.716.01-2	6

INTRAORAL SCANBODY

MODEL	IMPLANT Ø	PLATFORM	SCANBODY	HEIGHT mm	INTRAORAL LIBRARY CODE	ADAPTOR	DIGITAL ANALOG
Ikelt / Bikelt	3,3/3,75/4	4,1	52.410.101.01-2	10	DAS_I_10_0024	50.313.024.01-2	34.613.024.01-2
			52.412.101.01-2	12	DAS_I_12_0024		
Hikelt	3,8	3,95	52.410.101.01-2	10	DAS_I_10_0040	50.312.040.01-2	34.612.040.01-2
			52.412.101.01-2	12	DAS_I_12_0040		
	4,7	4,9	52.410.102.01-2	10	DAS_I_10_0041	50.313.041.01-2	34.613.041.01-2
			52.412.102.01-2	12	DAS_I_12_0041		
TopDM	3,5	3,5	52.410.103.01-2	10	DAS_I_10_0021	50.312.021.01-2	34.612.021.01-2
			52.412.103.01-2	12	DAS_I_12_0021		
	4	4	52.410.103.01-2	10	DAS_I_10_0021	50.312.021.01-2	34.612.021.01-2
			52.412.103.01-2	12	DAS_I_12_0021		
	5	5	52.410.103.01-2	10	DAS_I_10_0021	50.312.021.01-2	34.612.021.01-2
			52.412.103.01-2	12	DAS_I_12_0021		
Transepithelial A-5M		Regular	52.410.111.01-2	10	DAS_I_10_0025	50.313.025.01-2	34.613.025.01-2

DYNAMIC TI-BASE®		SCREWS		PRE-MILLED		DYNAMIC MILLING TOOL	
NON-ENGAGING (R) ENGAGING (NR)	GINGIVAL HEIGHT	DYNAMIC SCREW	STRAIGHT SCREW	COBALT-CHROME	TITANIUM	DYNAMIC MILLING TOOL	SHANK

NON-ENGAGING (R) ENGAGING (NR)	GINGIVAL HEIGHT	DYNAMIC SCREW	STRAIGHT SCREW	COBALT-CHROME	TITANIUM	DYNAMIC MILLING TOOL	SHANK	
31.323.024.01-2	R	41.320.060.01-2	40.320.008.01-2	32.213.024.01-2	32.313.024.01-2	33.390.716.01-2	3	
31.313.024.01-2	NR					0,3	33.490.716.01-2	4
31.322.040.01-2	R	41.317.071.01-2	40.317.004.01-2	32.212.040.01-2	32.312.040.01-2	33.370.716.01-2	3	
31.312.040.01-2	NR					0,6	33.470.716.01-2	4
31.323.041.01-2	R	41.317.071.01-2	40.317.004.01-2	32.213.041.01-2	32.313.041.01-2	33.370.716.01-2	3	
31.313.041.01-2	NR					0,4	33.470.716.01-2	4
31.322.021.01-2	R	41.316.073.01-2	40.316.008.02-2			33.335.754.01-2	3	
31.312.021.01-2	NR					1,5	33.435.754.01-2	4
31.322.021.01-2	R	41.316.073.01-2	40.316.008.02-2			33.335.754.01-2	3	
31.312.021.01-2	NR					1,5	33.435.754.01-2	4
31.322.021.01-2	R	41.316.073.01-2	40.316.008.02-2			33.335.754.01-2	3	
31.312.021.01-2	NR					1,5	33.435.754.01-2	4
31.323.025.01-2	R	41.314.039.01-2	40.314.008.01-2			33.390.716.01-2	3	
						0,3	33.490.716.01-2	4
							33.690.716.01-2	6

INTRAORAL SCANBODY

MODEL	IMPLANT Ø	PLATFORM	SCANBODY	HEIGHT mm	INTRAORAL LIBRARY CODE	ADAPTOR	DIGITAL ANALOG
SPR/CIM	3,3	3,3	52.410.101.01-2	10	DAS_I_10_0040	50.312.040.01-2	34.612.040.01-2
			52.412.101.01-2	12	DAS_I_12_0040		
	3,75	3,75	52.410.101.01-2	10	DAS_I_10_0040	50.312.040.01-2	34.612.040.01-2
			52.412.101.01-2	12	DAS_I_12_0040		
SPR/SPTT/CIM	4,2	4,2	52.410.101.01-2	10	DAS_I_10_0040	50.312.040.01-2	34.612.040.01-2
			52.412.101.01-2	12	DAS_I_12_0040		
	5	5	52.410.101.01-2	10	DAS_I_10_0040	50.312.040.01-2	34.612.040.01-2
			52.412.101.01-2	12	DAS_I_12_0040		

INTRAORAL SCANBODY

MODEL	IMPLANT Ø	PLATFORM	SCANBODY	HEIGHT mm	INTRAORAL LIBRARY CODE	ADAPTOR	DIGITAL ANALOG
External Connection	3,75/4/4,5/5	Universal 4,1	52.410.101.01-2	10	DAS_I_10_0024	50.313.024.01-2	34.613.024.01-2
			52.412.101.01-2	12	DAS_I_12_0024		

DYNAMIC TI-BASE® SCREWS PRE-MILLED DYNAMIC MILLING TOOL

NON-ENGAGING (R) ENGAGING (NR)		GINGIVAL HEIGHT	DYNAMIC SCREW	STRAIGHT SCREW	COBALT-CHROME	TITANIUM	DYNAMIC MILLING TOOL	SHANK
31.322.040.01-2	R	0,6	41.317.071.01-2	40.317.004.01-2	32.212.040.01-2	32.312.040.01-2	33.370.716.01-2	3
31.312.040.01-2	NR						33.470.716.01-2	4
31.322.040.01-2	R	0,6	41.317.071.01-2	40.317.004.01-2	32.212.040.01-2	32.312.040.01-2	33.370.716.01-2	3
31.312.040.01-2	NR						33.470.716.01-2	4
31.322.040.01-2	R	0,6	41.317.071.01-2	40.317.004.01-2	32.212.040.01-2	32.312.040.01-2	33.370.716.01-2	3
31.312.040.01-2	NR						33.470.716.01-2	4
31.322.040.01-2	R	0,6	41.317.071.01-2	40.317.004.01-2	32.212.040.01-2	32.312.040.01-2	33.370.716.01-2	3
31.312.040.01-2	NR						33.470.716.01-2	4

DYNAMIC TI-BASE® SCREWS PRE-MILLED DYNAMIC MILLING TOOL

NON-ENGAGING (R) ENGAGING (NR)		GINGIVAL HEIGHT	DYNAMIC SCREW	STRAIGHT SCREW	COBALT-CHROME	TITANIUM	DYNAMIC MILLING TOOL	SHANK
31.323.024.01-2	R	0,3	41.320.060.01-2	40.320.003.02-2	32.213.024.01-2	32.313.024.01-2	33.390.716.01-2	3
31.313.024.01-2	NR						33.490.716.01-2	4
							33.690.716.01-2	6

INTRAORAL SCANBODY

MODEL	IMPLANT Ø	PLATFORM	SCANBODY	HEIGHT mm	INTRAORAL LIBRARY CODE	ADAPTOR	DIGITAL ANALOG
Klassic / Konic	3,25PL/3,75/4	4,1 ER	52.410.101.01-2	10	DAS_I_10_0024	50.313.024.01-2	34.613.024.01-2
			52.412.101.01-2	12	DAS_I_12_0024		
	3,25/4	3,5 IR	52.410.101.01-2	10	DAS_I_10_0040	50.312.040.01-2	34.612.040.01-2
			52.412.101.01-2	12	DAS_I_12_0040		

INTRAORAL SCANBODY

MODEL	IMPLANT Ø	PLATFORM	SCANBODY	HEIGHT mm	INTRAORAL LIBRARY CODE	ADAPTOR	DIGITAL ANALOG
External Hexagon	3,75/4	4,1	52.410.101.01-2	10	DAS_I_10_0024	50.313.024.01-2	34.613.024.01-2
			52.412.101.01-2	12	DAS_I_12_0024		

DYNAMIC TI-BASE® SCREWS PRE-MILLED DYNAMIC MILLING TOOL

NON-ENGAGING (R) ENGAGING (NR)		GINGIVAL HEIGHT	DYNAMIC SCREW	STRAIGHT SCREW	COBALT-CHROME	TITANIUM	DYNAMIC MILLING TOOL	SHANK
31.323.024.01-2	R	0,3	41.320.060.01-2	40.320.008.01-2	32.213.024.01-2	32.313.024.01-2	33.390.716.01-2	3
31.313.024.01-2	NR						33.490.716.01-2	4
31.322.040.01-2	R	0,6	41.317.071.01-2	40.317.004.01-2	32.212.040.01-2	32.312.040.01-2	33.370.716.01-2	3
31.312.040.01-2	NR						33.470.716.01-2	4
							33.670.716.01-2	6

DYNAMIC TI-BASE® SCREWS PRE-MILLED DYNAMIC MILLING TOOL

NON-ENGAGING (R) ENGAGING (NR)		GINGIVAL HEIGHT	DYNAMIC SCREW	STRAIGHT SCREW	COBALT-CHROME	TITANIUM	DYNAMIC MILLING TOOL	SHANK
31.323.024.01-2	R	0,3	41.320.060.01-2	40.320.008.01-2	32.213.024.01-2	32.313.024.01-2	33.390.716.01-2	3
31.313.024.01-2	NR						33.490.716.01-2	4
							33.690.716.01-2	6

INTRAORAL SCANBODY

MODEL	IMPLANT Ø	PLATFORM	SCANBODY	HEIGHT mm	INTRAORAL LIBRARY CODE	ADAPTOR	DIGITAL ANALOG
Flash	3,5/4,3/5	Universal	52.410.103.01-2	10	DAS_I_10_0021	50.312.021.01-2	34.612.021.01-2
			52.412.103.01-2	12	DAS_I_12_0021		
Torq	3,5/3,75/4	Universal	52.410.103.01-2	10	DAS_I_10_0021	50.312.021.01-2	34.612.021.01-2
			52.412.103.01-2	12	DAS_I_12_0021		
Expand	3,75/4/5	Universal	52.410.103.01-2	10	DAS_I_10_0021	50.312.021.01-2	34.612.021.01-2
			52.412.103.01-2	12	DAS_I_12_0021		

DYNAMIC TI-BASE®		SCREWS		PRE-MILLED		DYNAMIC MILLING TOOL	
------------------	--	--------	--	------------	--	----------------------	--

NON-ENGAGING (R) ENGAGING (NR)	GINGIVAL HEIGHT	DYNAMIC SCREW	STRAIGHT SCREW	COBALT-CHROME	TITANIUM	DYNAMIC MILLING TOOL	SHANK
31.322.021.01-2	R	41.316.073.01-2	40.316.008.02-2	--	--	33.335.754.01-2	3
31.312.021.01-2	NR					33.435.754.01-2	4
31.322.021.01-2	R	41.316.073.01-2	40.316.008.02-2	--	--	33.335.754.01-2	3
31.312.021.01-2	NR					33.435.754.01-2	4
31.322.021.01-2	R	41.316.073.01-2	40.316.008.02-2	--	--	33.335.754.01-2	3
31.312.021.01-2	NR					33.435.754.01-2	4
31.312.021.01-2	NR	41.316.073.01-2	40.316.008.02-2	--	--	33.635.754.01-2	6
31.322.021.01-2	R					33.335.754.01-2	3

Compatible with - CORTEX

INTRAORAL SCANBODY

MODEL	IMPLANT Ø	PLATFORM	SCANBODY	HEIGHT mm	INTRAORAL LIBRARY CODE	ADAPTOR	DIGITAL ANALOG
Dynamix	3,3/3,8/4,2/5/6	3,75	52.410.101.01-2	10	DAS_I_10_0040	50.312.040.01-2	34.612.040.01-2
			52.412.101.01-2	12	DAS_I_12_0040		
Classix	3,3/3,8/4,2/5/6	3,75	52.410.101.01-2	10	DAS_I_10_0040	50.312.040.01-2	34.612.040.01-2
			52.412.101.01-2	12	DAS_I_12_0040		
Saturn	3,8/4,2	3,5	52.410.101.01-2	10	DAS_I_10_0040	50.312.040.01-2	34.612.040.01-2
			52.412.101.01-2	12	DAS_I_12_0040		

Compatible with - DENTAL TECH

INTRAORAL SCANBODY

MODEL	IMPLANT Ø	PLATFORM	SCANBODY	HEIGHT mm	INTRAORAL LIBRARY CODE	ADAPTOR	DIGITAL ANALOG
Implagic	4,5	4,5 (Blue)	52.410.102.01-2	10	DAS_I_10_0041	50.313.041.01-2	34.613.041.01-2
			52.412.102.01-2	12	DAS_I_12_0041		

DYNAMIC TI-BASE® **SCREWS** **PRE-MILLED** **DYNAMIC MILLING TOOL**

NON-ENGAGING (R) ENGAGING (NR)		GINGIVAL HEIGHT	DYNAMIC SCREW	STRAIGHT SCREW	COBALT-CHROME	TITANIUM	DYNAMIC MILLING TOOL	SHANK
31.322.040.01-2	R	0,6	41.317.071.01-2	40.317.004.01-2	32.212.040.01-2	32.312.040.01-2	33.370.716.01-2	3
31.312.040.01-2	NR						33.470.716.01-2	4
31.322.040.01-2	R	0,6	41.317.071.01-2	40.317.004.01-2	32.212.040.01-2	32.312.040.01-2	33.370.716.01-2	3
31.312.040.01-2	NR						33.470.716.01-2	4
31.322.040.01-2	R	0,6	41.317.071.01-2	40.317.004.01-2	32.212.040.01-2	32.312.040.01-2	33.370.716.01-2	3
31.312.040.01-2	NR						33.470.716.01-2	4

DYNAMIC TI-BASE® **SCREWS** **PRE-MILLED** **DYNAMIC MILLING TOOL**

NON-ENGAGING (R) ENGAGING (NR)		GINGIVAL HEIGHT	DYNAMIC SCREW	STRAIGHT SCREW	COBALT-CHROME	TITANIUM	DYNAMIC MILLING TOOL	SHANK
31.323.041.01-2	R	0,4	41.317.071.01-2	40.317.004.01-2	32.213.041.01-2	32.313.041.01-2	33.370.716.01-2	3
31.313.041.01-2	NR						33.470.716.01-2	4
							33.670.716.01-2	6

INTRAORAL SCANBODY

MODEL	IMPLANT Ø	PLATFORM	SCANBODY	HEIGHT mm	INTRAORAL LIBRARY CODE	ADAPTOR	DIGITAL ANALOG
s-Clean	3,7	Mini	52.410.101.01-2	10	DAS_I_10_0030	50.313.030.01-2	34.613.030.01-2
			52.412.101.01-2	12	DAS_I_12_0030		
	4,1/4,3	Regular	52.410.101.01-2	10	DAS_I_10_0030	50.313.030.01-2	34.613.030.01-2
			52.412.101.01-2	12	DAS_I_12_0030		
	4,8	Wide	52.410.101.01-2	10	DAS_I_10_0030	50.313.030.01-2	34.613.030.01-2
			52.412.101.01-2	12	DAS_I_12_0030		

DYNAMIC TI-BASE®		SCREWS		PRE-MILLED		DYNAMIC MILLING TOOL	
------------------	--	--------	--	------------	--	----------------------	--

NON-ENGAGING (R) ENGAGING (NR)		GINGIVAL HEIGHT	DYNAMIC SCREW	STRAIGHT SCREW	COBALT-CHROME	TITANIUM	DYNAMIC MILLING TOOL	SHANK
31.323.030.01-2 31.313.030.01-2	R NR	1,1	41.320.079.01-2		--	--	33.345.808.01-2 33.445.808.01-2 33.645.808.01-2	3 4 6
31.323.030.02-2 31.313.030.02-2	R NR	2						
31.323.030.01-2 31.313.030.01-2	R NR	1,1	41.320.079.01-2		--	--	33.345.808.01-2 33.445.808.01-2 33.645.808.01-2	3 4 6
31.323.030.02-2 31.313.030.02-2	R NR	2						
31.323.030.01-2 31.313.030.01-2	R NR	1,1	41.320.079.01-2		--	--	33.345.808.01-2 33.445.808.01-2 33.645.808.01-2	3 4 6
31.323.030.02-2 31.313.030.02-2	R NR	2						

INTRAORAL SCANBODY

MODEL	IMPLANT Ø	PLATFORM	SCANBODY	HEIGHT mm	INTRAORAL LIBRARY CODE	ADAPTOR	DIGITAL ANALOG
SimpleLine II	3,8/4,3	4,8	52.410.110.01-2	10	DAS_I_10_0037	50.313.037.01-2	34.613.037.01-2
			52.412.110.01-2	12	DAS_I_12_0037		
SuperLine and Implantium	3,4	3,6	52.410.101.01-2	10	DAS_I_10_0030	50.313.030.01-2	34.613.030.01-2
			52.412.101.01-2	12	DAS_I_12_0030		
	3,8	4	52.410.101.01-2	10	DAS_I_10_0030	50.313.030.01-2	34.613.030.01-2
			52.412.101.01-2	12	DAS_I_12_0030		
	4,3	4,5	52.410.101.01-2	10	DAS_I_10_0030	50.313.030.01-2	34.613.030.01-2
			52.412.101.01-2	12	DAS_I_12_0030		
	4,8	5	52.410.101.01-2	10	DAS_I_10_0030	50.313.030.01-2	34.613.030.01-2
			52.412.101.01-2	12	DAS_I_12_0030		
	4,8	6	52.410.101.01-2	10	DAS_I_10_0030	50.313.030.01-2	34.613.030.01-2
			52.412.101.01-2	12	DAS_I_12_0030		

DYNAMIC TI-BASE® **SCREWS** **PRE-MILLED** **DYNAMIC MILLING TOOL**

NON-ENGAGING (R) ENGAGING (NR)		GINGIVAL HEIGHT	DYNAMIC SCREW	STRAIGHT SCREW	COBALT-CHROME	TITANIUM	DYNAMIC MILLING TOOL	SHANK
31.323.037.01-2	R	0,6	41.320.067.01-2	40.320.007.01-2	32.213.037.01-2	32.313.037.01-2	33.315.708.01-2	3
31.313.037.01-2	NR						33.415.708.01-2	4
31.323.030.01-2	R	1,1	41.320.079.01-2		--	--	33.345.808.01-2	3
31.313.030.01-2	NR						33.445.808.01-2	4
31.323.030.02-2	R	2			--	--	33.645.808.01-2	6
31.313.030.02-2	NR							
31.323.030.01-2	R	1,1	41.320.079.01-2		--	--	33.345.808.01-2	3
31.313.030.01-2	NR						33.445.808.01-2	4
31.323.030.02-2	R	2			--	--	33.645.808.01-2	6
31.313.030.02-2	NR							
31.323.030.01-2	R	1,1	41.320.079.01-2		--	--	33.345.808.01-2	3
31.313.030.01-2	NR						33.445.808.01-2	4
31.323.030.02-2	R	2			--	--	33.645.808.01-2	6
31.313.030.02-2	NR							
31.323.030.01-2	R	1,1	41.320.079.01-2		--	--	33.345.808.01-2	3
31.313.030.01-2	NR						33.445.808.01-2	4
31.323.030.02-2	R	2			--	--	33.645.808.01-2	6
31.313.030.02-2	NR							

INTRAORAL SCANBODY

MODEL	IMPLANT Ø	PLATFORM	SCANBODY	HEIGHT mm	INTRAORAL LIBRARY CODE	ADAPTOR	DIGITAL ANALOG
UF II	3,8/4/4,5/5/5,5	Regular	52.410.101.01-2	10	DAS_I_10_0030	50.313.030.01-2	34.613.030.01-2
			52.412.101.01-2	12	DAS_I_12_0030		
External	3,75/4/4,5	Regular 4,1	52.410.101.01-2	10	DAS_I_10_0024	50.313.024.01-2	34.613.024.01-2
			52.412.101.01-2	12	DAS_I_12_0024		

DYNAMIC TI-BASE®		SCREWS		PRE-MILLED		DYNAMIC MILLING TOOL		
NON-ENGAGING (R)	ENGAGING (NR)	GINGIVAL HEIGHT	DYNAMIC SCREW	STRAIGHT SCREW	COBALT-CHROME	TITANIUM	DYNAMIC MILLING TOOL	SHANK

NON-ENGAGING (R)	ENGAGING (NR)	GINGIVAL HEIGHT	DYNAMIC SCREW	STRAIGHT SCREW	COBALT-CHROME	TITANIUM	DYNAMIC MILLING TOOL	SHANK
31.323.030.01-2	R	1,1	41.320.079.01-2		--	--	33.345.808.01-2	3
31.313.030.01-2	NR							
31.323.030.02-2	R	2	41.320.079.01-2		--	--	33.445.808.01-2	4
31.313.030.02-2	NR							
31.323.024.01-2	R	0,3	41.320.060.01-2	40.320.008.01-2	32.213.024.01-2	32.313.024.01-2	33.390.716.01-2	3
31.313.024.01-2	NR						33.490.716.01-2	4
							33.690.716.01-2	6

Compatible with - DSP BIOMEDICAL

INTRAORAL SCANBODY

MODEL	IMPLANT Ø	PLATFORM	SCANBODY	HEIGHT mm	INTRAORAL LIBRARY CODE	ADAPTOR	DIGITAL ANALOG
External Hexagon	3,75/4/5//3,5/3,8/4,3	4,1	52.410.101.01-2	10	DAS_I_10_0024	50.313.024.01-2	34.613.024.01-2
			52.412.101.01-2	12	DAS_I_12_0024		

Compatible with - ECKERMANN

INTRAORAL SCANBODY

MODEL	IMPLANT Ø	PLATFORM	SCANBODY	HEIGHT mm	INTRAORAL LIBRARY CODE	ADAPTOR	DIGITAL ANALOG
Hexagon	3/3,5/4/4,5/5	4,1	52.410.101.01-2	10	DAS_I_10_0024	50.313.024.01-2	34.613.024.01-2
			52.412.101.01-2	12	DAS_I_12_0024		

Compatible with - ELITE MEDICAL

INTRAORAL SCANBODY

MODEL	IMPLANT Ø	PLATFORM	SCANBODY	HEIGHT mm	INTRAORAL LIBRARY CODE	ADAPTOR	DIGITAL ANALOG
External Connection		Narrow	52.410.103.01-2	10	DAS_I_10_0023	50.312.023.01-2	34.612.023.01-2
			52.412.103.01-2	12	DAS_I_12_0023		
		Regular	52.410.101.01-2	10	DAS_I_10_0024	50.313.024.01-2	34.613.024.01-2
			52.412.101.01-2	12	DAS_I_12_0024		

DYNAMIC TI-BASE® **SCREWS** **PRE-MILLED** **DYNAMIC MILLING TOOL**

NON-ENGAGING (R) ENGAGING (NR)	GINGIVAL HEIGHT	DYNAMIC SCREW	STRAIGHT SCREW	COBALT-CHROME	TITANIUM	DYNAMIC MILLING TOOL	SHANK
31.323.024.01-2	R	41.320.065.01-2	40.320.008.01-2	32.213.024.01-2	32.313.024.01-2	33.390.716.01-2	3
31.313.024.01-2	NR					33.490.716.01-2	4
						33.690.716.01-2	6

DYNAMIC TI-BASE® **SCREWS** **PRE-MILLED** **DYNAMIC MILLING TOOL**

NON-ENGAGING (R) ENGAGING (NR)	GINGIVAL HEIGHT	DYNAMIC SCREW	STRAIGHT SCREW	COBALT-CHROME	TITANIUM	DYNAMIC MILLING TOOL	SHANK
31.323.024.01-2	R	41.320.060.01-2	40.320.008.01-2	32.213.024.01-2	32.313.024.01-2	33.390.716.01-2	3
31.313.024.01-2	NR					33.490.716.01-2	4
						33.690.716.01-2	6

DYNAMIC TI-BASE® **SCREWS** **PRE-MILLED** **DYNAMIC MILLING TOOL**

NON-ENGAGING (R) ENGAGING (NR)	GINGIVAL HEIGHT	DYNAMIC SCREW	STRAIGHT SCREW	COBALT-CHROME	TITANIUM	DYNAMIC MILLING TOOL	SHANK
31.322.023.01-2	R	41.316.059.01-2	40.316.008.01-2	--	--	33.390.805.01-2	3
31.312.023.01-2	NR					33.490.805.01-2	4
						33.690.805.01-2	6
31.323.024.01-2	R	41.320.060.01-2	40.320.008.01-2	32.213.024.01-2	32.313.024.01-2	33.390.716.01-2	3
31.313.024.01-2	NR					33.490.716.01-2	4
						33.690.716.01-2	6

INTRAORAL SCANBODY

MODEL	IMPLANT Ø	PLATFORM	SCANBODY	HEIGHT mm	INTRAORAL LIBRARY CODE	ADAPTOR	DIGITAL ANALOG
Naturactis	3,5	3,4	52.410.103.01-2	10	DAS_I_10_0004	50.313.004.01-2	34.613.004.01-2
			52.412.103.01-2	12	DAS_I_12_0004		
	4	3,8	52.410.103.01-2	10	DAS_I_10_0004	50.313.004.01-2	34.613.004.01-2
			52.412.103.01-2	12	DAS_I_12_0004		
	4,5	4,3	52.410.103.01-2	10	DAS_I_10_0004	50.313.004.01-2	34.613.004.01-2
			52.412.103.01-2	12	DAS_I_12_0004		
	5	4,8	52.410.103.01-2	10	DAS_I_10_0004	50.313.004.01-2	34.613.004.01-2
			52.412.103.01-2	12	DAS_I_12_0004		

DYNAMIC TI-BASE®		SCREWS		PRE-MILLED		DYNAMIC MILLING TOOL	
------------------	--	--------	--	------------	--	----------------------	--

NON-ENGAGING (R) ENGAGING (NR)		GINGIVAL HEIGHT	DYNAMIC SCREW	STRAIGHT SCREW	COBALT-CHROME	TITANIUM	DYNAMIC MILLING TOOL	SHANK
31.323.004.01-2 31.313.004.01-2	R NR	1	41.316.076.01-2	40.316.005.02-2	32.213.004.01-2	32.313.004.01-2	33.390.754.01-2 33.490.754.01-2 33.690.754.01-2	3
31.323.004.02-2 31.313.004.02-2	R NR	2						4
31.323.004.01-2 31.313.004.01-2	R NR	1	41.316.076.01-2	40.316.005.02-2	32.213.004.01-2	32.313.004.01-2	33.390.754.01-2 33.490.754.01-2 33.690.754.01-2	3
31.323.004.02-2 31.313.004.02-2	R NR	2						4
31.323.004.01-2 31.313.004.01-2	R NR	1	41.316.076.01-2	40.316.005.02-2	32.213.004.01-2	32.313.004.01-2	33.390.754.01-2 33.490.754.01-2 33.690.754.01-2	3
31.323.004.02-2 31.313.004.02-2	R NR	2						4
31.323.004.01-2 31.313.004.01-2	R NR	1	41.316.076.01-2	40.316.005.02-2	32.213.004.01-2	32.313.004.01-2	33.390.754.01-2 33.490.754.01-2 33.690.754.01-2	3
31.323.004.02-2 31.313.004.02-2	R NR	2						4

INTRAORAL SCANBODY

MODEL	IMPLANT Ø	PLATFORM	SCANBODY	HEIGHT mm	INTRAORAL LIBRARY CODE	ADAPTOR	DIGITAL ANALOG
Uneva	3,6	4,1	52.410.101.01-2	10	DAS_I_10_0024	50.313.024.01-2	34.613.024.01-2
			52.412.101.01-2	12	DAS_I_12_0024		
	4,1	4,1	52.410.101.01-2	10	DAS_I_10_0024	50.313.024.01-2	34.613.024.01-2
			52.412.101.01-2	12	DAS_I_12_0024		
Uneva (Platform Switching)	4,8	4,1	52.410.101.01-2	10	DAS_I_10_0024	50.313.024.01-2	34.613.024.01-2
			52.412.101.01-2	12	DAS_I_12_0024		
	6	4,1	52.410.101.01-2	10	DAS_I_10_0024	50.313.024.01-2	34.613.024.01-2
			52.412.101.01-2	12	DAS_I_12_0024		
Natea	3,6/4,1/4,8	Narrow	52.410.103.01-2	10	DAS_I_10_0004	50.313.004.01-2	34.613.004.01-2
			52.412.103.01-2	12	DAS_I_12_0004		
	3,6/4,1/4,8	Regular	52.410.103.01-2	10	DAS_I_10_0004	50.313.004.01-2	34.613.004.01-2
			52.412.103.01-2	12	DAS_I_12_0004		
	6	Wide	52.410.102.01-2	10	DAS_I_10_0005	50.314.005.01-2	34.614.005.01-2
			52.412.102.01-2	12	DAS_I_12_0005		

DYNAMIC TI-BASE®		SCREWS		PRE-MILLED		DYNAMIC MILLING TOOL	
NON-ENGAGING (R) ENGAGING (NR)	GINGIVAL HEIGHT	DYNAMIC SCREW	STRAIGHT SCREW	COBALT-CHROME	TITANIUM	DYNAMIC MILLING TOOL	SHANK
31.323.024.01-2	R	41.320.060.01-2	40.320.008.01-2	32.213.024.01-2	32.313.024.01-2	33.390.716.01-2	3
31.313.024.01-2	NR					33.490.716.01-2	4
31.323.024.01-2	R	41.320.060.01-2	40.320.008.01-2	32.213.024.01-2	32.313.024.01-2	33.390.716.01-2	3
31.313.024.01-2	NR					33.490.716.01-2	4
31.323.024.01-2	R	41.320.060.01-2	40.320.008.01-2	32.213.024.01-2	32.313.024.01-2	33.390.716.01-2	3
31.313.024.01-2	NR					33.490.716.01-2	4
31.323.004.01-2	R	41.316.076.01-2	40.316.005.02-2	32.213.004.01-2	32.313.004.01-2	33.390.716.01-2	3
31.313.004.01-2	NR					33.490.716.01-2	4
31.323.004.02-2	R	41.316.076.01-2	40.316.005.02-2	32.213.004.01-2	32.313.004.01-2	33.690.716.01-2	6
31.313.004.02-2	NR					33.690.716.01-2	6
31.323.004.01-2	R	41.316.076.01-2	40.316.005.02-2	32.213.004.01-2	32.313.004.01-2	33.390.754.01-2	3
31.313.004.01-2	NR					33.490.754.01-2	4
31.323.004.02-2	R	41.316.076.01-2	40.316.005.02-2	32.213.004.01-2	32.313.004.01-2	33.690.754.01-2	6
31.313.004.02-2	NR					33.690.754.01-2	6
31.324.005.01-2	R	41.320.090.01-2	40.320.005.03-2	32.214.005.01-2	32.314.005.01-2	33.390.958.01-2	3
31.314.005.01-2	NR					33.490.958.01-2	4
31.324.005.02-2	R	41.320.090.01-2	40.320.005.03-2	32.214.005.01-2	32.314.005.01-2	33.690.958.01-2	6
31.314.005.02-2	NR					33.690.958.01-2	6

INTRAORAL SCANBODY

MODEL	IMPLANT Ø	PLATFORM	SCANBODY	HEIGHT mm	INTRAORAL LIBRARY CODE	ADAPTOR	DIGITAL ANALOG
Aesthetica	4,1	4,8	52.410.110.01-2	10	DAS_I_10_0037	50.313.037.01-2	34.613.037.01-2
			52.412.110.01-2	12	DAS_I_12_0037		
Naturall	3,5	Narrow	52.410.103.01-2	10	DAS_I_10_0004	50.313.004.01-2	34.613.004.01-2
			52.412.103.01-2	12	DAS_I_12_0004		
	4/4,5	Regular	52.410.103.01-2	10	DAS_I_10_0004	50.313.004.01-2	34.613.004.01-2
			52.412.103.01-2	12	DAS_I_12_0004		
	5	Wide	52.410.102.01-2	10	DAS_I_10_0005	50.314.005.01-2	34.614.005.01-2
			52.412.102.01-2	12	DAS_I_12_0005		

DYNAMIC TI-BASE® **SCREWS** **PRE-MILLED** **DYNAMIC MILLING TOOL**

NON-ENGAGING (R) ENGAGING (NR)		GINGIVAL HEIGHT	DYNAMIC SCREW	STRAIGHT SCREW	COBALT-CHROME	TITANIUM	DYNAMIC MILLING TOOL	SHANK
31.323.037.01-2	R	0,6	41.320.067.01-2	40.320.007.01-2	32.213.037.01-2	32.313.037.01-2	33.315.708.01-2	3
31.313.037.01-2	NR						33.415.708.01-2	4
31.323.004.01-2	R	1	41.316.076.01-2	40.316.005.02-2	32.213.004.01-2	32.313.004.01-2	33.390.754.01-2	3
31.313.004.01-2	NR						33.490.754.01-2	4
31.323.004.02-2	R	2	41.316.076.01-2	40.316.005.02-2	32.213.004.01-2	32.313.004.01-2	33.690.754.01-2	6
31.313.004.02-2	NR						33.390.754.01-2	3
31.323.004.01-2	R	1	41.316.076.01-2	40.316.005.02-2	32.213.004.01-2	32.313.004.01-2	33.490.754.01-2	4
31.313.004.01-2	NR						33.690.754.01-2	6
31.324.005.01-2	R	1	41.320.090.01-2	40.320.005.03-2	32.214.005.01-2	32.314.005.01-2	33.390.958.01-2	3
31.314.005.01-2	NR						33.490.958.01-2	4
31.324.005.02-2	R	2	41.320.090.01-2	40.320.005.03-2	32.214.005.01-2	32.314.005.01-2	33.690.958.01-2	6
31.314.005.02-2	NR							

Compatible with - GALIMPLANT

INTRAORAL SCANBODY

MODEL	IMPLANT Ø	PLATFORM	SCANBODY	HEIGHT mm	INTRAORAL LIBRARY CODE	ADAPTOR	DIGITAL ANALOG
External Connection	3,5/4	4	52.410.101.01-2	10	DAS_I_10_0024	50.313.024.01-2	34.613.024.01-2
			52.412.101.01-2	12	DAS_I_12_0024		
Internal Connection	4	4	52.410.103.01-2	10	DAS_I_10_0004	50.313.004.01-2	34.613.004.01-2
			52.412.103.01-2	12	DAS_I_12_0004		

Compatible with - GMI (ILERIMPLANT)

INTRAORAL SCANBODY

MODEL	IMPLANT Ø	PLATFORM	SCANBODY	HEIGHT mm	INTRAORAL LIBRARY CODE	ADAPTOR	DIGITAL ANALOG
Phoenix	3,3/3,75/4	Standard 4,1	52.410.101.01-2	10	DAS_I_10_0024	50.313.024.01-2	34.613.024.01-2
			52.412.101.01-2	12	DAS_I_12_0024		

DYNAMIC TI-BASE® **SCREWS** **PRE-MILLED** **DYNAMIC MILLING TOOL**

NON-ENGAGING (R) ENGAGING (NR)		GINGIVAL HEIGHT	DYNAMIC SCREW	STRAIGHT SCREW	COBALT-CHROME	TITANIUM	DYNAMIC MILLING TOOL	SHANK
31.323.024.01-2	R	0,3	41.320.065.01-2	40.320.008.01-2	32.213.024.01-2	32.313.024.01-2	33.390.716.01-2	3
31.313.024.01-2	NR						33.490.716.01-2	4
31.323.004.01-2	R	1	41.316.076.01-2	40.316.005.02-2	32.213.004.01-2	32.313.004.01-2	33.390.716.01-2	3
31.313.004.01-2	NR						33.490.716.01-2	4
31.323.004.02-2	R	2					33.690.716.01-2	6
31.313.004.02-2	NR							

DYNAMIC TI-BASE® **SCREWS** **PRE-MILLED** **DYNAMIC MILLING TOOL**

NON-ENGAGING (R) ENGAGING (NR)		GINGIVAL HEIGHT	DYNAMIC SCREW	STRAIGHT SCREW	COBALT-CHROME	TITANIUM	DYNAMIC MILLING TOOL	SHANK
31.323.024.01-2	R	0,3	41.320.060.01-2	40.320.008.01-2	32.213.024.01-2	32.313.024.01-2	33.390.716.01-2	3
31.313.024.01-2	NR						33.490.716.01-2	4
							33.690.716.01-2	6

INTRAORAL SCANBODY

MODEL	IMPLANT Ø	PLATFORM	SCANBODY	HEIGHT mm	INTRAORAL LIBRARY CODE	ADAPTOR	DIGITAL ANALOG
Best Fit Internal Octagon	3,7/4,3/4,8	Regular	52.410.110.01-2	10	DAS_I_10_0037	50.313.037.01-2	34.613.037.01-2
			52.412.110.01-2	12	DAS_I_12_0037		
Best Fit Internal Hexagon	3,7/4,1/4,3/4,8	Wide	52.410.102.01-2	10	DAS_I_10_0005	50.314.005.01-2	34.614.005.01-2
			52.412.102.01-2	12	DAS_I_12_0005		
Best Fit External Hexagon	3,5	Narrow	52.410.103.01-2	10	DAS_I_10_0023	50.312.023.01-2	34.612.023.01-2
			52.412.103.01-2	12	DAS_I_12_0023		
	4,1	Regular	52.410.101.01-2	10	DAS_I_10_0024	50.313.024.01-2	34.613.024.01-2
			52.412.101.01-2	12	DAS_I_12_0024		

DYNAMIC TI-BASE®		SCREWS		PRE-MILLED		DYNAMIC MILLING TOOL		
NON-ENGAGING (R) ENGAGING (NR)	GINGIVAL HEIGHT	DYNAMIC SCREW	STRAIGHT SCREW	COBALT-CHROME	TITANIUM	DYNAMIC MILLING TOOL	SHANK	
31.323.037.01-2	R	41.320.067.01-2	40.320.007.01-2	32.213.037.01-2	32.313.037.01-2	33.315.708.01-2	3	
31.313.037.01-2	NR					0,6	33.415.708.01-2	4
31.324.005.01-2	R	41.320.090.01-2	40.320.005.03-2	32.214.005.01-2	32.314.005.01-2	33.390.958.01-2	3	
31.314.005.01-2	NR					1	33.490.958.01-2	4
31.324.005.02-2	R					2	33.690.958.01-2	6
31.314.005.02-2	NR							
31.322.023.01-2	R	41.316.059.01-2	40.316.008.01-2	--	--	33.390.805.01-2	3	
31.312.023.01-2	NR					0,3	33.490.805.01-2	4
31.323.024.01-2	R	41.320.060.01-2	40.320.008.01-2	32.213.024.01-2	32.313.024.01-2	33.390.716.01-2	3	
31.313.024.01-2	NR					0,3	33.490.716.01-2	4
						33.690.716.01-2	6	

INTRAORAL SCANBODY

MODEL	IMPLANT Ø	PLATFORM	SCANBODY	HEIGHT mm	INTRAORAL LIBRARY CODE	ADAPTOR	DIGITAL ANALOG
Tapered Self Thread	3,3/3,75	3,5	52.410.101.01-2	10	DAS_I_10_0040	50.312.040.01-2	34.612.040.01-2
			52.412.101.01-2	12	DAS_I_12_0040		
	4,2/5	4,5	52.410.102.01-2	10	DAS_I_10_0041	50.313.041.01-2	34.613.041.01-2
			52.412.102.01-2	12	DAS_I_12_0041		
Logic Plus	3,5	3,7	52.410.101.01-2	10	DAS_I_10_0040	50.312.040.01-2	34.612.040.01-2
			52.412.101.01-2	12	DAS_I_12_0040		
	4,3	3,9	52.410.101.01-2	10	DAS_I_10_0040	50.312.040.01-2	34.612.040.01-2
			52.412.101.01-2	12	DAS_I_12_0040		

DYNAMIC TI-BASE®		SCREWS		PRE-MILLED		DYNAMIC MILLING TOOL	
------------------	--	--------	--	------------	--	----------------------	--

NON-ENGAGING (R) ENGAGING (NR)		GINGIVAL HEIGHT	DYNAMIC SCREW	STRAIGHT SCREW	COBALT-CHROME	TITANIUM	DYNAMIC MILLING TOOL	SHANK
31.322.040.01-2	R	0,6	41.317.071.01-2	40.317.004.01-2	32.212.040.01-2	32.312.040.01-2	33.370.716.01-2	3
31.312.040.01-2	NR						33.470.716.01-2	4
31.323.041.01-2	R	0,4	41.317.071.01-2	40.317.004.01-2	32.213.041.01-2	32.313.041.01-2	33.370.716.01-2	3
31.313.041.01-2	NR						33.470.716.01-2	4
31.322.040.01-2	R	0,6	41.317.071.01-2	40.317.004.01-2	32.212.040.01-2	32.312.040.01-2	33.370.716.01-2	3
31.312.040.01-2	NR						33.470.716.01-2	4
31.322.040.01-2	R	0,6	41.317.071.01-2	40.317.004.01-2	32.212.040.01-2	32.312.040.01-2	33.370.716.01-2	3
31.312.040.01-2	NR						33.470.716.01-2	4

INTRAORAL SCANBODY

MODEL	IMPLANT Ø	PLATFORM	SCANBODY	HEIGHT mm	INTRAORAL LIBRARY CODE	ADAPTOR	DIGITAL ANALOG
Bone Level Plus	3,3	3,3	52.410.106.01-2	10	DAS_I_10_0033	50.312.033.01-2	34.612.033.01-2
			52.412.106.01-2	12	DAS_I_12_0033		
	4,1	4,1	52.410.107.01-2	10	DAS_I_10_0035	50.313.035.01-2	34.613.035.01-2
			52.412.107.01-2	12	DAS_I_12_0035		
	4,8	4,8	52.410.107.01-2	10	DAS_I_10_0035	50.313.035.01-2	34.613.035.01-2
			52.412.107.01-2	12	DAS_I_12_0035		

DYNAMIC TI-BASE®		SCREWS		PRE-MILLED		DYNAMIC MILLING TOOL		
NON-ENGAGING (R)	ENGAGING (NR)	GINGIVAL HEIGHT	DYNAMIC SCREW	STRAIGHT SCREW	COBALT-CHROME	TITANIUM	DYNAMIC MILLING TOOL	SHANK

NON-ENGAGING (R)	ENGAGING (NR)	GINGIVAL HEIGHT	DYNAMIC SCREW	STRAIGHT SCREW	COBALT-CHROME	TITANIUM	DYNAMIC MILLING TOOL	SHANK
31.322.033.01-2	R	1,3	41.316.078.01-2	40.316.007.01-2	--	--	33.315.804.01-2	3
31.312.033.01-2	NR						33.415.804.01-2	4
31.322.033.02-2	R	2	41.316.078.01-2	40.316.007.01-2	32.213.035.01-2	32.313.035.01-2	33.315.804.01-2	3
31.312.033.02-2	NR						33.415.804.01-2	4
31.323.035.01-2	R	1,1	41.316.078.01-2	40.316.007.01-2	32.213.035.01-2	32.313.035.01-2	33.315.804.01-2	3
31.313.035.01-2	NR						33.415.804.01-2	4
31.323.035.02-2	R	2	41.316.078.01-2	40.316.007.01-2	32.213.035.01-2	32.313.035.01-2	33.315.804.01-2	3
31.313.035.02-2	NR						33.415.804.01-2	4

INTRAORAL SCANBODY

MODEL	IMPLANT Ø	PLATFORM	SCANBODY	HEIGHT mm	INTRAORAL LIBRARY CODE	ADAPTOR	DIGITAL ANALOG
RePlus / Replant / Reactive	3,5/3,7/4,2	3,5	52.410.108.01-2	10	DAS_I_10_0026	50.312.026.01-2	34.612.026.01-2
			52.412.108.01-2	12	DAS_I_12_0026		
	4,3/4,7	4,3	52.410.109.01-2	10	DAS_I_10_0027	50.313.027.01-2	34.613.027.01-2
			52.412.109.01-2	12	DAS_I_12_0027		
Legacy	3,7	3,5	52.410.101.01-2	10	DAS_I_10_0040	50.312.040.01-2	34.612.040.01-2
			52.412.101.01-2	12	DAS_I_12_0040		
	4,7	4,5	52.410.102.01-2	10	DAS_I_10_0041	50.313.041.01-2	34.613.041.01-2
			52.412.102.01-2	12	DAS_I_12_0041		
Swishplant / Swishplus	4,1/4,8	4,8	52.410.110.01-2	10	DAS_I_10_0037	50.313.037.01-2	34.613.037.01-2
			52.412.110.01-2	12	DAS_I_12_0037		

DYNAMIC TI-BASE®		SCREWS		PRE-MILLED		DYNAMIC MILLING TOOL	
NON-ENGAGING (R) ENGAGING (NR)	GINGIVAL HEIGHT	DYNAMIC SCREW	STRAIGHT SCREW	COBALT-CHROME	TITANIUM	DYNAMIC MILLING TOOL	SHANK

NON-ENGAGING (R) ENGAGING (NR)	GINGIVAL HEIGHT	DYNAMIC SCREW	STRAIGHT SCREW	COBALT-CHROME	TITANIUM	DYNAMIC MILLING TOOL	SHANK
31.322.026.01-2 31.312.026.01-2	R NR 0,5	41.318.075.01-2	40.318.008.01-2	--	--	33.390.805.01-2 33.490.805.01-2 33.690.805.01-2	3 4 6
31.322.026.02-2 31.312.026.02-2	R NR 1,2						
31.323.027.01-2 31.313.027.01-2	R NR 0,3	41.320.090.01-2	40.320.008.03-2	32.213.027.01-2	32.313.027.01-2	33.390.958.01-2 33.490.958.01-2 33.690.958.01-2	3 4 6
31.323.027.02-2 31.313.027.02-2	R NR 1,2						
31.322.040.01-2 31.312.040.01-2	R NR 0,6	41.317.071.01-2	40.317.004.01-2	32.212.040.01-2	32.312.040.01-2	33.370.716.01-2 33.470.716.01-2 33.670.716.01-2	3 4 6
31.323.041.01-2 31.313.041.01-2	R NR 0,4						
31.323.037.01-2 31.313.037.01-2	R NR 0,6	41.320.067.01-2	40.320.007.01-2	32.213.037.01-2	32.313.037.01-2	33.315.708.01-2 33.415.708.01-2 33.615.708.01-2	3 4 6

INTRAORAL SCANBODY

MODEL	IMPLANT Ø	PLATFORM	SCANBODY	HEIGHT mm	INTRAORAL LIBRARY CODE	ADAPTOR	DIGITAL ANALOG
SwishActive	3,3	3	52.410.103.01-2	10	DAS_I_10_0021	50.312.021.01-2	34.612.021.01-2
			52.412.103.01-2	12	DAS_I_12_0021		
	4,1/4,8	3,4	52.410.101.01-2	10	DAS_I_10_0022	50.313.022.01-2	34.613.022.01-2
			52.412.101.01-2	12	DAS_I_12_0022		
Interactive	3,2/3,7	3	52.410.103.01-2	10	DAS_I_10_0021	50.312.021.01-2	34.612.021.01-2
			52.412.103.01-2	12	DAS_I_12_0021		
	4,3/5	3,4	52.410.101.01-2	10	DAS_I_10_0022	50.313.022.01-2	34.613.022.01-2
			52.412.101.01-2	12	DAS_I_12_0022		

DYNAMIC TI-BASE®		SCREWS		PRE-MILLED		DYNAMIC MILLING TOOL	
------------------	--	--------	--	------------	--	----------------------	--

NON-ENGAGING (R) ENGAGING (NR)	GINGIVAL HEIGHT	DYNAMIC SCREW	STRAIGHT SCREW	COBALT-CHROME	TITANIUM	DYNAMIC MILLING TOOL	SHANK
31.322.021.01-2	R	41.316.073.01-2	40.316.008.02-2	--	--	33.335.754.01-2	3
31.312.021.01-2	NR					33.435.754.01-2	4
						33.635.754.01-2	6
31.323.022.01-2 31.313.022.01-2	R NR	41.320.075.01-2	40.320.008.02-2	32.213.022.01-2	32.313.022.01-2	33.335.758.01-2	3
31.323.022.02-2 31.313.022.02-2	R NR					33.435.758.01-2	4
						33.635.758.01-2	6
31.322.021.01-2	R	41.316.073.01-2	40.316.008.02-2	--	--	33.335.754.01-2	3
31.312.021.01-2	NR					33.435.754.01-2	4
						33.635.754.01-2	6
31.323.022.01-2 31.313.022.01-2	R NR	41.320.075.01-2	40.320.008.02-2	32.213.022.01-2	32.313.022.01-2	33.335.758.01-2	3
31.323.022.02-2 31.313.022.02-2	R NR					33.435.758.01-2	4
						33.635.758.01-2	6

Compatible with - JDENTALCARE

INTRAORAL SCANBODY

MODEL	IMPLANT Ø	PLATFORM	SCANBODY	HEIGHT mm	INTRAORAL LIBRARY CODE	ADAPTOR	DIGITAL ANALOG
JDEvolution/ JDEvolution Plus	3,7	3,7	52.410.101.01-2	10	DAS_I_10_0040	50.312.040.01-2	34.612.040.01-2
			52.412.101.01-2	12	DAS_I_12_0040		
	4,3/5	4	52.410.101.01-2	10	DAS_I_10_0040	50.312.040.01-2	34.612.040.01-2
			52.412.101.01-2	12	DAS_I_12_0040		
	6	5	52.410.101.01-2	10	DAS_I_10_0040	50.312.040.01-2	34.612.040.01-2
			52.412.101.01-2	12	DAS_I_12_0040		

Compatible with - KEYSTONE

INTRAORAL SCANBODY

MODEL	IMPLANT Ø	PLATFORM	SCANBODY	HEIGHT mm	INTRAORAL LIBRARY CODE	ADAPTOR	DIGITAL ANALOG
Restore	3,75/4	RD 4,1	52.410.101.01-2	10	DAS_I_10_0024	50.313.024.01-2	34.613.024.01-2
			52.412.101.01-2	12	DAS_I_12_0024		

DYNAMIC TI-BASE® **SCREWS** **PRE-MILLED** **DYNAMIC MILLING TOOL**

NON-ENGAGING (R) ENGAGING (NR)		GINGIVAL HEIGHT	DYNAMIC SCREW	STRAIGHT SCREW	COBALT-CHROME	TITANIUM	DYNAMIC MILLING TOOL	SHANK
31.322.040.01-2	R	0,6	41.317.071.01-2	40.317.004.01-2	32.212.040.01-2	32.312.040.01-2	33.370.716.01-2	3
31.312.040.01-2	NR						33.470.716.01-2	4
31.322.040.01-2	R	0,6	41.317.071.01-2	40.317.004.01-2	32.212.040.01-2	32.312.040.01-2	33.370.716.01-2	3
31.312.040.01-2	NR						33.470.716.01-2	4
31.322.040.01-2	R	0,6	41.317.071.01-2	40.317.004.01-2	32.212.040.01-2	32.312.040.01-2	33.370.716.01-2	3
31.312.040.01-2	NR						33.470.716.01-2	4

DYNAMIC TI-BASE® **SCREWS** **PRE-MILLED** **DYNAMIC MILLING TOOL**

NON-ENGAGING (R) ENGAGING (NR)		GINGIVAL HEIGHT	DYNAMIC SCREW	STRAIGHT SCREW	COBALT-CHROME	TITANIUM	DYNAMIC MILLING TOOL	SHANK
31.323.024.01-2	R	0,3	41.320.060.01-2	40.320.008.01-2	32.213.024.01-2	32.313.024.01-2	33.390.805.01-2	3
31.313.024.01-2	NR						33.490.805.01-2	4
							33.690.805.01-2	6

Compatible with - KLOCKNER

INTRAORAL SCANBODY

MODEL	IMPLANT Ø	PLATFORM	SCANBODY	HEIGHT mm	INTRAORAL LIBRARY CODE	ADAPTOR	DIGITAL ANALOG
KL	4,1	Regular	52.410.101.01-2	10	DAS_I_10_0024	50.313.024.01-2	34.613.024.01-2
			52.412.101.01-2	12	DAS_I_12_0024		

Compatible with - LEADER

INTRAORAL SCANBODY

MODEL	IMPLANT Ø	PLATFORM	SCANBODY	HEIGHT mm	INTRAORAL LIBRARY CODE	ADAPTOR	DIGITAL ANALOG
Tixos Internal Hex	3,3	3,5	52.410.101.01-2	10	DAS_I_10_0040	50.312.040.01-2	34.612.040.01-2
			52.412.101.01-2	12	DAS_I_12_0040		
	3,75	4	52.410.101.01-2	10	DAS_I_10_0040	50.312.040.01-2	34.612.040.01-2
			52.412.101.01-2	12	DAS_I_12_0040		
Tixos External Hex	3,3/3,75	4,1	52.410.101.01-2	10	DAS_I_10_0024	50.313.024.01-2	34.613.024.01-2
			52.412.101.01-2	12	DAS_I_12_0024		

DYNAMIC TI-BASE® **SCREWS** **PRE-MILLED** **DYNAMIC MILLING TOOL**

NON-ENGAGING (R) ENGAGING (NR)		GINGIVAL HEIGHT	DYNAMIC SCREW	STRAIGHT SCREW	COBALT-CHROME	TITANIUM	DYNAMIC MILLING TOOL	SHANK
31.323.024.01-2	R	0,3	41.320.060.01-2	40.320.003.02-2	32.213.024.01-2	32.313.024.01-2	33.390.805.01-2	3
31.313.024.01-2	NR						33.490.805.01-2	4
							33.690.805.01-2	6

DYNAMIC TI-BASE® **SCREWS** **PRE-MILLED** **DYNAMIC MILLING TOOL**

NON-ENGAGING (R) ENGAGING (NR)		GINGIVAL HEIGHT	DYNAMIC SCREW	STRAIGHT SCREW	COBALT-CHROME	TITANIUM	DYNAMIC MILLING TOOL	SHANK
31.322.040.01-2	R	0,6	41.317.071.01-2	40.317.004.01-2	32.212.040.01-2	32.312.040.01-2	33.370.716.01-2	3
31.312.040.01-2	NR						33.470.716.01-2	4
							33.670.716.01-2	6
31.322.040.01-2	R	0,6	41.317.071.01-2	40.317.004.01-2	32.212.040.01-2	32.312.040.01-2	33.370.716.01-2	3
31.312.040.01-2	NR						33.470.716.01-2	4
							33.670.716.01-2	6
31.323.024.01-2	R	0,3	41.320.060.01-2	40.320.008.01-2	32.213.024.01-2	32.313.024.01-2	33.390.805.01-2	3
31.313.024.01-2	NR						33.490.805.01-2	4
							33.690.805.01-2	6

INTRAORAL SCANBODY

MODEL	IMPLANT Ø	PLATFORM	SCANBODY	HEIGHT mm	INTRAORAL LIBRARY CODE	ADAPTOR	DIGITAL ANALOG
AnyOne Internal	3,5/4/4,5/5/6/7	General	52.410.101.01-2	10	DAS_I_10_0030	50.313.030.01-2	34.613.030.01-2
			52.412.101.01-2	12	DAS_I_12_0030		
AnyOne External	4	Regular 4,1	52.410.101.01-2	10	DAS_I_10_0024	50.313.024.01-2	34.613.024.01-2
			52.412.101.01-2	12	DAS_I_12_0024		
	4,5	Regular 4,5	52.410.101.01-2	10	DAS_I_10_0024	50.313.024.01-2	34.613.024.01-2
			52.412.101.01-2	12	DAS_I_12_0024		

DYNAMIC TI-BASE®		SCREWS		PRE-MILLED		DYNAMIC MILLING TOOL	
------------------	--	--------	--	------------	--	----------------------	--

NON-ENGAGING (R) ENGAGING (NR)		GINGIVAL HEIGHT	DYNAMIC SCREW	STRAIGHT SCREW	COBALT-CHROME	TITANIUM	DYNAMIC MILLING TOOL	SHANK
31.323.030.01-2	R	1,1	41.320.079.01-2		--	--	33.345.808.01-2	3
31.313.030.01-2	NR						33.445.808.01-2	4
31.323.030.02-2	R	2					33.645.808.01-2	6
31.313.030.02-2	NR							
31.323.024.01-2	R	0,3	41.320.060.01-2	40.320.008.01-2	32.213.024.01-2	32.313.024.01-2	33.390.716.01-2	3
31.313.024.01-2	NR						33.490.716.01-2	4
31.323.024.01-2	R	0,3	41.320.060.01-2	40.320.008.01-2	32.213.024.01-2	32.313.024.01-2	33.390.716.01-2	3
31.313.024.01-2	NR						33.490.716.01-2	4

INTRAORAL SCANBODY

MODEL	IMPLANT Ø	PLATFORM	SCANBODY	HEIGHT mm	INTRAORAL LIBRARY CODE	ADAPTOR	DIGITAL ANALOG
Universal	3,3/3,5/3,75/4	4,1	52.410.101.01-2	10	DAS_I_10_0024	50.313.024.01-2	34.613.024.01-2
			52.412.101.01-2	12	DAS_I_12_0024		
Ektos	3,7/4,2	3,5	52.410.101.01-2	10	DAS_I_10_0040	50.312.040.01-2	34.612.040.01-2
			52.412.101.01-2	12	DAS_I_12_0040		

DYNAMIC TI-BASE®		SCREWS		PRE-MILLED		DYNAMIC MILLING TOOL	
NON-ENGAGING (R) ENGAGING (NR)	GINGIVAL HEIGHT	DYNAMIC SCREW	STRAIGHT SCREW	COBALT-CHROME	TITANIUM	DYNAMIC MILLING TOOL	SHANK

31.323.024.01-2	R	0,3	41.320.060.01-2	40.320.008.01-2	32.213.024.01-2	32.313.024.01-2	33.390.716.01-2	3
31.313.024.01-2	NR						33.490.716.01-2	4
31.322.040.01-2	R	0,6	41.318.075.01-2	40.318.003.01-2	32.212.040.01-2	32.312.040.01-2	33.370.716.01-2	3
31.312.040.01-2	NR						33.470.716.01-2	4
							33.670.716.01-2	6

INTRAORAL SCANBODY

MODEL	IMPLANT Ø	PLATFORM	SCANBODY	HEIGHT mm	INTRAORAL LIBRARY CODE	ADAPTOR	DIGITAL ANALOG
Lance	3,75/4,2	Standard	52.410.101.01-2	10	DAS_I_10_0024	50.313.024.01-2	34.613.024.01-2
			52.412.101.01-2	12	DAS_I_12_0024		
Seven	3,75/4,2	Standard	52.410.101.01-2	10	DAS_I_10_0040	50.312.040.01-2	34.612.040.01-2
			52.412.101.01-2	12	DAS_I_12_0040		
	5/6	Wide	52.410.102.01-2	10	DAS_I_10_0041	50.313.041.01-2	34.613.041.01-2
			52.412.102.01-2	12	DAS_I_12_0041		
M4	3,75/4,2	Standard	52.410.101.01-2	10	DAS_I_10_0040	50.312.040.01-2	34.612.040.01-2
			52.412.101.01-2	12	DAS_I_12_0040		
	5/6	Wide	52.410.102.01-2	10	DAS_I_10_0041	50.313.041.01-2	34.613.041.01-2
			52.412.102.01-2	12	DAS_I_12_0041		

DYNAMIC TI-BASE®		SCREWS		PRE-MILLED		DYNAMIC MILLING TOOL	
NON-ENGAGING (R) ENGAGING (NR)	GINGIVAL HEIGHT	DYNAMIC SCREW	STRAIGHT SCREW	COBALT-CHROME	TITANIUM	DYNAMIC MILLING TOOL	SHANK
31.323.024.01-2	R	41.320.060.01-2	40.320.008.01-2	32.213.024.01-2	32.313.024.01-2	33.390.716.01-2	3
31.313.024.01-2	NR					0,3	33.490.716.01-2
31.322.040.01-2	R	41.317.071.01-2	40.317.004.01-2	32.212.040.01-2	32.312.040.01-2	33.370.716.01-2	3
31.312.040.01-2	NR					0,6	33.470.716.01-2
31.323.041.01-2	R	41.317.071.01-2	40.317.004.01-2	32.213.041.01-2	32.313.041.01-2	33.370.716.01-2	3
31.313.041.01-2	NR					0,4	33.470.716.01-2
31.322.040.01-2	R	41.317.071.01-2	40.317.004.01-2	32.212.040.01-2	32.312.040.01-2	33.370.716.01-2	3
31.312.040.01-2	NR					0,6	33.470.716.01-2
31.323.041.01-2	R	41.317.071.01-2	40.317.004.01-2	32.213.041.01-2	32.313.041.01-2	33.370.716.01-2	3
31.313.041.01-2	NR					0,4	33.470.716.01-2
31.322.040.01-2	R	41.317.071.01-2	40.317.004.01-2	32.212.040.01-2	32.312.040.01-2	33.370.716.01-2	3
31.312.040.01-2	NR					0,6	33.470.716.01-2
31.323.041.01-2	R	41.317.071.01-2	40.317.004.01-2	32.213.041.01-2	32.313.041.01-2	33.370.716.01-2	3
31.313.041.01-2	NR					0,4	33.470.716.01-2

INTRAORAL SCANBODY

MODEL	IMPLANT Ø	PLATFORM	SCANBODY	HEIGHT mm	INTRAORAL LIBRARY CODE	ADAPTOR	DIGITAL ANALOG
MG Osseous	3,3	3,4 Mini	52.410.104.01-2	10	DAS_I_10_0003	50.312.003.01-2	34.612.003.01-2
			52.410.101.01-2	10	DAS_I_10_0024		
	3,4/3,75/4,25	4,1 Standard	52.412.101.01-2	12	DAS_I_12_0024	50.313.024.01-2	34.613.024.01-2
			52.410.103.01-2	10	DAS_I_10_0004		
MG Inhex	3,75/4,25	2,8 Standard	52.412.103.01-2	12	DAS_I_12_0004	50.313.004.01-2	34.613.004.01-2
			52.410.102.01-2	10	DAS_I_10_0005		
	5	3,8 Maxi	52.412.102.01-2	12	DAS_I_12_0005	50.314.005.01-2	34.614.005.01-2
			52.410.102.01-2	10	DAS_I_10_0005		

DYNAMIC TI-BASE®		SCREWS		PRE-MILLED		DYNAMIC MILLING TOOL	
------------------	--	--------	--	------------	--	----------------------	--

NON-ENGAGING (R) ENGAGING (NR)	GINGIVAL HEIGHT	DYNAMIC SCREW	STRAIGHT SCREW	COBALT-CHROME	TITANIUM	DYNAMIC MILLING TOOL	SHANK
31.322.003.01-2	R	41.320.065.01-2	40.320.003.02-2	--	--	33.390.716.01-2	3
31.312.003.01-2	NR					33.490.716.01-2	4
31.323.024.01-2	R	41.320.060.01-2	40.320.008.01-2	32.213.024.01-2	32.313.024.01-2	33.390.716.01-2	3
31.313.024.01-2	NR					33.490.716.01-2	4
31.323.004.01-2	R	41.316.076.01-2	40.316.005.02-2	32.213.004.01-2	32.313.004.01-2	33.390.754.01-2	3
31.313.004.01-2	NR					33.490.754.01-2	4
31.323.004.02-2	R	41.320.090.01-2	40.320.005.03-2	32.214.005.01-2	32.314.005.01-2	33.690.754.01-2	6
31.313.004.02-2	NR					33.390.958.01-2	3
31.324.005.01-2	R	41.320.090.01-2	40.320.005.03-2	32.214.005.01-2	32.314.005.01-2	33.490.958.01-2	4
31.314.005.01-2	NR					33.690.958.01-2	6
31.324.005.02-2	R	41.320.090.01-2	40.320.005.03-2	32.214.005.01-2	32.314.005.01-2	33.490.958.01-2	4
31.314.005.02-2	NR					33.690.958.01-2	6

INTRAORAL SCANBODY

MODEL	IMPLANT Ø	PLATFORM	SCANBODY	HEIGHT mm	INTRAORAL LIBRARY CODE	ADAPTOR	DIGITAL ANALOG
External Connection HE	3,3/4	4,1	52.410.101.01-2	10	DAS_I_10_0024	50.313.024.01-2	34.613.024.01-2
			52.412.101.01-2	12	DAS_I_12_0024		
Internal Connection CM	3,5/4	Regular	52.410.103.01-2	10	DAS_I_10_0004	50.313.004.01-2	34.613.004.01-2
			52.412.103.01-2	12	DAS_I_12_0004		
	5	Wide	52.410.102.01-2	10	DAS_I_10_0005	50.314.005.01-2	34.614.005.01-2
			52.412.102.01-2	12	DAS_I_12_0005		

DYNAMIC TI-BASE®		SCREWS		PRE-MILLED		DYNAMIC MILLING TOOL	
NON-ENGAGING (R) ENGAGING (NR)	GINGIVAL HEIGHT	DYNAMIC SCREW	STRAIGHT SCREW	COBALT-CHROME	TITANIUM	DYNAMIC MILLING TOOL	SHANK
31.323.024.01-2	R	41.320.060.01-2	40.320.008.01-2	32.213.024.01-2	32.313.024.01-2	33.390.716.01-2	3
31.313.024.01-2	NR					0,3	33.490.716.01-2
31.323.004.01-2	R	41.316.076.01-2	40.316.005.02-2	32.213.004.01-2	32.313.004.01-2	33.390.754.01-2	3
31.313.004.01-2	NR					1	33.490.754.01-2
31.323.004.02-2	R	41.320.090.01-2	40.320.005.03-2	32.214.005.01-2	32.314.005.01-2	33.390.958.01-2	3
31.313.004.02-2	NR					2	33.490.958.01-2
31.324.005.01-2	R	41.320.090.01-2	40.320.005.03-2	32.214.005.01-2	32.314.005.01-2	33.390.958.01-2	3
31.314.005.01-2	NR					1	33.490.958.01-2
31.324.005.02-2	R	41.320.090.01-2	40.320.005.03-2	32.214.005.01-2	32.314.005.01-2	33.690.958.01-2	6
31.314.005.02-2	NR					2	33.690.958.01-2

INTRAORAL SCANBODY

MODEL	IMPLANT Ø	PLATFORM	SCANBODY	HEIGHT mm	INTRAORAL LIBRARY CODE	ADAPTOR	DIGITAL ANALOG	
EB External System	3,5	Narrow	52.410.103.01-2	10	DAS_I_10_0023	50.312.023.01-2	34.612.023.01-2	
			52.412.103.01-2	12	DAS_I_12_0023			
IS Implant System	4	Regular 4	52.410.101.01-2	10	DAS_I_10_0030	50.313.030.01-2	34.613.030.01-2	
			52.412.101.01-2	12	DAS_I_12_0030			
	4,5	Regular 4,5	52.410.101.01-2	10	DAS_I_10_0030	50.313.030.01-2	34.613.030.01-2	
			52.412.101.01-2	12	DAS_I_12_0030			
	5	Wide 5	52.410.101.01-2	10	DAS_I_10_0030	50.313.030.01-2	34.613.030.01-2	
			52.412.101.01-2	12	DAS_I_12_0030			
		4,8		52.410.111.01-2	10	DAS_I_10_0025	50.313.025.01-2	34.613.025.01-2

DYNAMIC TI-BASE® SCREWS PRE-MILLED DYNAMIC MILLING TOOL

NON-ENGAGING (R) ENGAGING (NR)		GINGIVAL HEIGHT	DYNAMIC SCREW	STRAIGHT SCREW	COBALT-CHROME	TITANIUM	DYNAMIC MILLING TOOL	SHANK
31.322.023.01-2	R	0,3	41.316.059.01-2	40.316.008.01-2	--	--	33.390.805.01-2	3
31.312.023.01-2	NR						33.490.805.01-2	4
31.323.030.01-2	R	1,1	41.320.079.01-2		--	--	33.345.808.01-2	3
31.313.030.01-2	NR						33.445.808.01-2	4
31.323.030.02-2	R	2			--	--	33.645.808.01-2	6
31.313.030.02-2	NR							
31.323.030.01-2	R	1,1	41.320.079.01-2		--	--	33.345.808.01-2	3
31.313.030.01-2	NR						33.445.808.01-2	4
31.323.030.02-2	R	2			--	--	33.645.808.01-2	6
31.313.030.02-2	NR							
31.323.030.01-2	R	1,1	41.320.079.01-2		--	--	33.345.808.01-2	3
31.313.030.01-2	NR						33.445.808.01-2	4
31.323.030.02-2	R	2			--	--	33.645.808.01-2	6
31.313.030.02-2	NR							
31.323.025.01-2	R	0,3	41.314.039.01-2	40.314.008.01-2	--	--	33.390.716.01-2	3
	NR						33.490.716.01-2	4

INTRAORAL SCANBODY

MODEL	IMPLANT Ø	PLATFORM	SCANBODY	HEIGHT mm	INTRAORAL LIBRARY CODE	ADAPTOR	DIGITAL ANALOG
Cono Morse Mini Pilar		Regular	52.410.111.01-2	10	DAS_I_10_0025	50.313.025.01-2	34.613.025.01-2
Smart HE	3,75/4	4,1	52.410.101.01-2	10	DAS_I_10_0024	50.313.024.01-2	34.613.024.01-2
			52.412.101.01-2	12	DAS_I_12_0024		

DYNAMIC TI-BASE®		SCREWS		PRE-MILLED		DYNAMIC MILLING TOOL		
NON-ENGAGING (R) ENGAGING (NR)	GINGIVAL HEIGHT	DYNAMIC SCREW	STRAIGHT SCREW	COBALT-CHROME	TITANIUM	DYNAMIC MILLING TOOL	SHANK	
31.323.025.01-2	R	0,3	41.314.039.01-2	40.314.008.01-2	--	--	33.390.716.01-2 33.490.716.01-2 33.690.716.01-2	3 4 6
31.323.024.01-2	R	0,3	41.320.070.01-2	40.320.008.01-2	32.213.024.01-2	32.313.024.01-2	33.390.716.01-2 33.490.716.01-2 33.690.716.01-2	3 4 6
31.313.024.01-2	NR							

INTRAORAL SCANBODY

MODEL	IMPLANT Ø	PLATFORM	SCANBODY	HEIGHT mm	INTRAORAL LIBRARY CODE	ADAPTOR	DIGITAL ANALOG
Branemark	3,3	Narrow	52.410.103.01-2	10	DAS_I_10_0023	50.312.023.01-2	34.612.023.01-2
			52.412.103.01-2	12	DAS_I_12_0023		
	3,75/4	Regular	52.410.101.01-2	10	DAS_I_10_0024	50.313.024.01-2	34.613.024.01-2
			52.412.101.01-2	12	DAS_I_12_0024		
Multi-Unit		Regular	52.410.111.01-2	10	DAS_I_10_0025	50.313.025.01-2	34.613.025.01-2
Replace	3,5	Narrow	52.410.108.01-2	10	DAS_I_10_0026	50.312.026.01-2	34.612.026.01-2
			52.412.108.01-2	12	DAS_I_12_0026		
	4,3	Regular	52.410.109.01-2	10	DAS_I_10_0027	50.313.027.01-2	34.613.027.01-2
			52.412.109.01-2	12	DAS_I_12_0027		

DYNAMIC TI-BASE® **SCREWS** **PRE-MILLED** **DYNAMIC MILLING TOOL**

NON-ENGAGING (R) ENGAGING (NR)		GINGIVAL HEIGHT	DYNAMIC SCREW	STRAIGHT SCREW	COBALT-CHROME	TITANIUM	DYNAMIC MILLING TOOL	SHANK
31.322.023.01-2	R	0,3	41.316.059.01-2	40.316.008.01-2	--	--	33.390.805.01-2	3
31.312.023.01-2	NR						33.490.805.01-2	4
31.323.024.01-2	R	0,3	41.320.060.01-2	40.320.008.01-2	32.213.024.01-2	32.313.024.01-2	33.390.716.01-2	3
31.313.024.01-2	NR						33.490.716.01-2	4
31.323.025.01-2	R	0,3	41.314.039.01-2	40.314.008.01-2	--	--	33.390.716.01-2	3
							33.490.716.01-2	4
							33.690.716.01-2	6
31.322.026.01-2	R	0,5	41.318.075.01-2	40.318.008.01-2	--	--	33.390.805.01-2	3
31.312.026.01-2	NR						33.490.805.01-2	4
31.322.026.02-2	R	1,2					33.690.805.01-2	6
31.312.026.02-2	NR							
31.323.027.01-2	R	0,3	41.320.090.01-2	40.320.008.03-2	32.213.027.01-2	32.313.027.01-2	33.390.958.01-2	3
31.313.027.01-2	NR						33.490.958.01-2	4
31.323.027.02-2	R	1,2					33.690.958.01-2	6
31.313.027.02-2	NR							

INTRAORAL SCANBODY

MODEL	IMPLANT Ø	PLATFORM	SCANBODY	HEIGHT mm	INTRAORAL LIBRARY CODE	ADAPTOR	DIGITAL ANALOG
Active	3,5	Narrow	52.410.103.01-2	10	DAS_I_10_0021	50.312.021.01-2	34.612.021.01-2
			52.412.103.01-2	12	DAS_I_12_0021		
	4,3/5	Regular	52.410.101.01-2	10	DAS_I_10_0022	50.313.022.01-2	34.613.022.01-2
			52.412.101.01-2	12	DAS_I_12_0022		

DYNAMIC TI-BASE®		SCREWS		PRE-MILLED		DYNAMIC MILLING TOOL	
------------------	--	--------	--	------------	--	----------------------	--

NON-ENGAGING (R) ENGAGING (NR)	GINGIVAL HEIGHT	DYNAMIC SCREW	STRAIGHT SCREW	COBALT-CHROME	TITANIUM	DYNAMIC MILLING TOOL	SHANK
31.322.021.01-2	1,5	41.316.073.01-2	40.316.008.02-2	--	--	33.335.754.01-2	3
31.312.021.01-2						33.435.754.01-2	4
31.312.021.01-2	1,3	41.320.075.01-2	40.320.008.02-2	32.213.022.01-2	32.313.022.01-2	33.635.754.01-2	6
31.323.022.01-2						33.335.758.01-2	3
31.313.022.01-2	2	41.320.075.01-2	40.320.008.02-2	32.213.022.01-2	32.313.022.01-2	33.435.758.01-2	4
31.323.022.02-2						33.635.758.01-2	6
31.313.022.02-2							

Compatible with - NORMON

INTRAORAL SCANBODY

MODEL	IMPLANT Ø	PLATFORM	SCANBODY	HEIGHT mm	INTRAORAL LIBRARY CODE	ADAPTOR	DIGITAL ANALOG
Normoimplant HE	3,25/3,75/4,25/4,75	4,1	52.410.101.01-2	10	DAS_I_10_0024	50.313.024.01-2	34.613.024.01-2
			52.412.101.01-2	12	DAS_I_12_0024		

Compatible with - OSSEOLIFE (ZIACOM)

INTRAORAL SCANBODY

MODEL	IMPLANT Ø	PLATFORM	SCANBODY	HEIGHT mm	INTRAORAL LIBRARY CODE	ADAPTOR	DIGITAL ANALOG
OEX	3,75/4,25	RP 4,1	52.410.101.01-2	10	DAS_I_10_0024	50.313.024.01-2	34.613.024.01-2
			52.412.101.01-2	12	DAS_I_12_0024		

DYNAMIC TI-BASE® **SCREWS** **PRE-MILLED** **DYNAMIC MILLING TOOL**

NON-ENGAGING (R) ENGAGING (NR)	GINGIVAL HEIGHT	DYNAMIC SCREW	STRAIGHT SCREW	COBALT-CHROME	TITANIUM	DYNAMIC MILLING TOOL	SHANK
31.323.024.01-2	R	41.320.060.01-2	40.320.008.01-2	32.213.024.01-2	32.313.024.01-2	33.390.716.01-2	3
31.313.024.01-2	NR					33.490.716.01-2	4
						33.690.716.01-2	6

DYNAMIC TI-BASE® **SCREWS** **PRE-MILLED** **DYNAMIC MILLING TOOL**

NON-ENGAGING (R) ENGAGING (NR)	GINGIVAL HEIGHT	DYNAMIC SCREW	STRAIGHT SCREW	COBALT-CHROME	TITANIUM	DYNAMIC MILLING TOOL	SHANK
31.323.024.01-2	R	41.320.060.01-2	40.320.008.01-2	32.213.024.01-2	32.313.024.01-2	33.390.716.01-2	3
31.313.024.01-2	NR					33.490.716.01-2	4
						33.690.716.01-2	6

INTRAORAL SCANBODY

MODEL	IMPLANT Ø	PLATFORM	SCANBODY	HEIGHT mm	INTRAORAL LIBRARY CODE	ADAPTOR	DIGITAL ANALOG
TS	3,5	Mini	52.410.103.01-2	10	DAS_I_10_0029	50.312.029.01-2	34.613.029.01-2
			52.412.103.01-2	12	DAS_I_12_0029		
	4/4,5/5/6/7	Regular	52.410.101.01-2	10	DAS_I_10_0030	50.313.030.01-2	34.613.030.01-2
			52.412.101.01-2	12	DAS_I_12_0030		
US	3,75/4/4,5	Regular 4,1	52.410.101.01-2	10	DAS_I_10_0024	50.313.024.01-2	34.613.024.01-2
			52.412.101.01-2	12	DAS_I_12_0024		

DYNAMIC TI-BASE®		SCREWS		PRE-MILLED		DYNAMIC MILLING TOOL	
NON-ENGAGING (R) ENGAGING (NR)	GINGIVAL HEIGHT	DYNAMIC SCREW	STRAIGHT SCREW	COBALT-CHROME	TITANIUM	DYNAMIC MILLING TOOL	SHANK
31.322.029.01-2	R	41.316.094.01-2	40.316.005.04-2	--	--	33.345.804.01-2	3
31.312.029.01-2	NR					33.445.804.01-2	4
31.323.030.01-2	R	41.320.079.01-2		--	--	33.345.808.01-2	3
31.313.030.01-2	NR					33.445.808.01-2	4
31.323.030.02-2	R	41.320.079.01-2		--	--	33.645.808.01-2	6
31.313.030.02-2	NR						
31.323.024.01-2	R	41.320.060.01-2	40.320.008.01-2	32.213.024.01-2	32.313.024.01-2	33.390.716.01-2	3
31.313.024.01-2	NR					33.490.716.01-2	4
						33.690.716.01-2	6

INTRAORAL SCANBODY

MODEL	IMPLANT Ø	PLATFORM	SCANBODY	HEIGHT mm	INTRAORAL LIBRARY CODE	ADAPTOR	DIGITAL ANALOG
She	3,75 / 4	4	52.410.101.01-2	10	DAS_I_10_0024	50.313.024.01-2	34.613.024.01-2
			52.412.101.01-2	12	DAS_I_12_0024		
Shi	3,3 / 3,75 / 4,2	3,5	52.410.101.01-2	10	DAS_I_10_0040	50.312.040.01-2	34.612.040.01-2
			52.412.101.01-2	12	DAS_I_12_0040		

INTRAORAL SCANBODY

MODEL	IMPLANT Ø	PLATFORM	SCANBODY	HEIGHT mm	INTRAORAL LIBRARY CODE	ADAPTOR	DIGITAL ANALOG
TSH/BNT Serie 3	3,6	4	52.410.101.01-2	10	DAS_I_10_0024	50.313.024.01-2	34.613.024.01-2
			52.412.101.01-2	12	DAS_I_12_0024		
TSH/BNT Serie 4	4,2	4	52.410.101.01-2	10	DAS_I_10_0024	50.313.024.01-2	34.613.024.01-2
			52.412.101.01-2	12	DAS_I_12_0024		

DYNAMIC TI-BASE® SCREWS PRE-MILLED DYNAMIC MILLING TOOL

NON-ENGAGING (R) ENGAGING (NR)		GINGIVAL HEIGHT	DYNAMIC SCREW	STRAIGHT SCREW	COBALT-CHROME	TITANIUM	DYNAMIC MILLING TOOL	SHANK
31.323.024.01-2	R	0,3	41.320.065.01-2	40.320.008.01-2	32.213.024.01-2	32.313.024.01-2	33.390.716.01-2	3
31.313.024.01-2	NR						33.490.716.01-2	4
31.322.040.01-2	R	0,6	41.317.071.01-2	40.317.004.01-2	32.212.040.01-2	32.312.040.01-2	33.370.716.01-2	3
31.312.040.01-2	NR						33.470.716.01-2	4
							33.670.716.01-2	6

DYNAMIC TI-BASE® SCREWS PRE-MILLED DYNAMIC MILLING TOOL

NON-ENGAGING (R) ENGAGING (NR)		GINGIVAL HEIGHT	DYNAMIC SCREW	STRAIGHT SCREW	COBALT-CHROME	TITANIUM	DYNAMIC MILLING TOOL	SHANK
31.323.024.01-2	R	0,3	41.320.060.01-2	40.320.003.02-2	32.213.024.01-2	32.313.024.01-2	33.390.716.01-2	3
31.313.024.01-2	NR						33.490.716.01-2	4
31.323.024.01-2	R	0,3	41.320.060.01-2	40.320.003.02-2	32.213.024.01-2	32.313.024.01-2	33.390.716.01-2	3
31.313.024.01-2	NR						33.490.716.01-2	4
							33.690.716.01-2	6

INTRAORAL SCANBODY

MODEL	IMPLANT Ø	PLATFORM	SCANBODY	HEIGHT mm	INTRAORAL LIBRARY CODE	ADAPTOR	DIGITAL ANALOG
External Cylinder/ External Conical	3,75/4,25//3,5/4	4,1 Standard	52.410.101.01-2	10	DAS_I_10_0024	50.313.024.01-2	34.613.024.01-2
			52.412.101.01-2	12	DAS_I_12_0024		
Internal Cylinder/ Conical Internal	3,3/3,75/4,25/5//3,5/4/5	3,5	52.410.101.01-2	10	DAS_I_10_0040	50.312.040.01-2	34.612.040.01-2
			52.412.101.01-2	12	DAS_I_12_0040		
SP Octa	3,3/4,1/4,8	4,8	52.410.110.01-2	10	DAS_I_10_0037	50.313.037.01-2	34.613.037.01-2
			52.412.110.01-2	12	DAS_I_12_0037		

DYNAMIC TI-BASE® **SCREWS** **PRE-MILLED** **DYNAMIC MILLING TOOL**

NON-ENGAGING (R) ENGAGING (NR)		GINGIVAL HEIGHT	DYNAMIC SCREW	STRAIGHT SCREW	COBALT-CHROME	TITANIUM	DYNAMIC MILLING TOOL	SHANK
31.323.024.01-2	R	0,3	41.320.060.01-2	40.320.008.01-2	32.213.024.01-2	32.313.024.01-2	33.390.716.01-2	3
31.313.024.01-2	NR						33.490.716.01-2	4
							33.690.716.01-2	6
31.322.040.01-2	R	0,6	41.317.071.01-2	40.317.004.01-2	32.212.040.01-2	32.312.040.01-2	33.390.716.01-2	3
31.312.040.01-2	NR						33.490.716.01-2	4
							33.690.716.01-2	6
31.323.037.01-2	R	0,6	41.320.067.01-2	40.320.007.01-2	32.213.037.01-2	32.313.037.01-2	33.315.708.01-2	3
31.313.037.01-2	NR						33.415.708.01-2	4
							33.615.708.01-2	6

INTRAORAL SCANBODY

MODEL	IMPLANT Ø	PLATFORM	SCANBODY	HEIGHT mm	INTRAORAL LIBRARY CODE	ADAPTOR	DIGITAL ANALOG
PHE	3,5	3,5	52.410.103.01-2	10	DAS_I_10_0023	50.312.023.01-2	34.612.023.01-2
			52.412.103.01-2	12	DAS_I_12_0023		
	4/4,5/5	4,1	52.410.101.01-2	10	DAS_I_10_0024	50.313.024.01-2	34.613.024.01-2
			52.412.101.01-2	12	DAS_I_12_0024		
PHI	3,75	3,5	52.410.101.01-2	10	DAS_I_10_0040	50.312.040.01-2	34.612.040.01-2
			52.412.101.01-2	12	DAS_I_12_0040		
	4,5/5	4,5	52.410.102.01-2	10	DAS_I_10_0041	50.313.041.01-2	34.613.041.01-2
			52.412.102.01-2	12	DAS_I_12_0041		

DYNAMIC TI-BASE® **SCREWS** **PRE-MILLED** **DYNAMIC MILLING TOOL**

NON-ENGAGING (R) ENGAGING (NR)	GINGIVAL HEIGHT	DYNAMIC SCREW	STRAIGHT SCREW	COBALT-CHROME	TITANIUM	DYNAMIC MILLING TOOL	SHANK
31.322.023.01-2	R	41.316.076.01-2	40.316.008.01-2	--	--	33.390.805.01-2	3
31.312.023.01-2	NR					33.490.805.01-2	4
31.323.024.01-2	R	41.320.065.01-2	40.320.008.01-2	32.213.024.01-2	32.313.024.01-2	33.390.716.01-2	3
31.313.024.01-2	NR					33.490.716.01-2	4
31.322.040.01-2	R	41.318.075.01-2		32.212.040.01-2	32.312.040.01-2	33.390.716.01-2	3
31.312.040.01-2	NR					33.490.716.01-2	4
31.323.041.01-2	R	41.317.071.01-2	40.317.004.01-2	32.213.041.01-2	32.313.041.01-2	33.390.716.01-2	3
31.313.041.01-2	NR					33.490.716.01-2	4
						33.690.716.01-2	6

INTRAORAL SCANBODY

MODEL	IMPLANT Ø	PLATFORM	SCANBODY	HEIGHT mm	INTRAORAL LIBRARY CODE	ADAPTOR	DIGITAL ANALOG
P1	3,2/3,75/4,2/5/6	3,75	52.410.101.01-2	10	DAS_I_10_0040	50.312.040.01-2	34.612.040.01-2
			52.412.101.01-2	12	DAS_I_12_0040		
P7	3,2/3,75/4,2/4,5/5/6	3,75	52.410.101.01-2	10	DAS_I_10_0040	50.312.040.01-2	34.612.040.01-2
			52.412.101.01-2	12	DAS_I_12_0040		

DYNAMIC TI-BASE® **SCREWS** **PRE-MILLED** **DYNAMIC MILLING TOOL**

NON-ENGAGING (R) ENGAGING (NR)	GINGIVAL HEIGHT	DYNAMIC SCREW	STRAIGHT SCREW	COBALT-CHROME	TITANIUM	DYNAMIC MILLING TOOL	SHANK
31.322.040.01-2	R	41.317.071.01-2	40.317.004.01-2	--	--	33.370.716.01-2	3
31.312.040.01-2	NR					33.470.716.01-2	4
31.312.040.01-2	R	41.317.071.01-2	40.317.004.01-2	32.212.040.01-2	32.312.040.01-2	33.670.716.01-2	6
31.322.040.01-2	NR					33.370.716.01-2	3
						33.470.716.01-2	4
						33.670.716.01-2	6

INTRAORAL SCANBODY

MODEL	IMPLANT Ø	PLATFORM	SCANBODY	HEIGHT mm	INTRAORAL LIBRARY CODE	ADAPTOR	DIGITAL ANALOG
Duo	4,6	4,1	52.410.101.01-2	10	DAS_I_10_0024	50.313.024.01-2	34.613.024.01-2
			52.412.101.01-2	12	DAS_I_12_0024		
Integra	3,75/4	4,1	52.410.101.01-2	10	DAS_I_10_0024	50.313.024.01-2	34.613.024.01-2
			52.412.101.01-2	12	DAS_I_12_0024		
Compact	4,5	CM3,8	52.410.103.01-2	10	DAS_I_10_0004	50.313.004.01-2	34.613.004.01-2
			52.412.103.01-2	12	DAS_I_12_0004		
Duocon	3,8	CM3,8	52.410.103.01-2	10	DAS_I_10_0004	50.313.004.01-2	34.613.004.01-2
			52.412.103.01-2	12	DAS_I_12_0004		
	4,6/5,5	CM4,6	52.410.102.01-2	10	DAS_I_10_0005	50.314.005.01-2	34.614.005.01-2
			52.412.102.01-2	12	DAS_I_12_0005		

DYNAMIC TI-BASE®		SCREWS		PRE-MILLED		DYNAMIC MILLING TOOL	
------------------	--	--------	--	------------	--	----------------------	--

NON-ENGAGING (R) ENGAGING (NR)		GINGIVAL HEIGHT	DYNAMIC SCREW	STRAIGHT SCREW	COBALT-CHROME	TITANIUM	DYNAMIC MILLING TOOL	SHANK
31.323.024.01-2	R	0,3	41.320.074.01-2	40.320.008.01-2	32.213.024.01-2	32.313.024.01-2	33.370.716.01-2	3
31.313.024.01-2	NR						33.470.716.01-2	4
31.323.024.01-2	R	0,3	41.320.070.01-2	40.320.008.01-2	32.213.024.01-2	32.313.024.01-2	33.370.716.01-2	3
31.313.024.01-2	NR						33.470.716.01-2	4
31.323.004.01-2	R	1	41.316.076.01-2	40.316.005.02-2	32.213.004.01-2	32.313.004.01-2	33.390.754.01-2	3
31.313.004.01-2	NR						33.490.754.01-2	4
31.323.004.02-2	R	2	41.316.076.01-2	40.316.005.02-2	32.213.004.01-2	32.313.004.01-2	33.690.754.01-2	6
31.313.004.02-2	NR						33.690.754.01-2	6
31.323.004.01-2	R	1	41.316.076.01-2	40.316.005.02-2	32.213.004.01-2	32.313.004.01-2	33.390.754.01-2	3
31.313.004.01-2	NR						33.490.754.01-2	4
31.323.004.02-2	R	2	41.316.076.01-2	40.316.005.02-2	32.213.004.01-2	32.313.004.01-2	33.690.754.01-2	6
31.313.004.02-2	NR						33.690.754.01-2	6
31.324.005.01-2	R	1	41.320.090.01-2	40.320.005.03-2	32.214.005.01-2	32.314.005.01-2	33.390.958.01-2	3
31.314.005.01-2	NR						33.490.958.01-2	4
31.324.005.02-2	R	2	41.320.090.01-2	40.320.005.03-2	32.214.005.01-2	32.314.005.01-2	33.690.958.01-2	6
31.314.005.02-2	NR						33.690.958.01-2	6

INTRAORAL SCANBODY

MODEL	IMPLANT Ø	PLATFORM	SCANBODY	HEIGHT mm	INTRAORAL LIBRARY CODE	ADAPTOR	DIGITAL ANALOG
Tri-Nex	3,5	3,5	52.410.108.01-2	10	DAS_I_10_0026	50.312.026.01-2	34.612.026.01-2
			52.412.108.01-2	12	DAS_I_12_0026		
	4,3	4,3	52.410.109.01-2	10	DAS_I_10_0027	50.313.027.01-2	34.613.027.01-2
			52.412.109.01-2	12	DAS_I_12_0027		
IT Connection	3,3/4/4,1/4,9/5	4,8	52.410.110.01-2	10	DAS_I_10_0037	50.313.037.01-2	34.613.037.01-2
		4,8	52.412.110.01-2	12	DAS_I_12_0037		
External Hex	3,25	3,4	52.410.104.01-2	10	DAS_I_10_0003	50.312.003.01-2	34.612.003.01-2
	3,75/4	4,1	52.410.101.01-2	10	DAS_I_10_0024	50.313.024.01-2	34.613.024.01-2
			52.412.101.01-2	12	DAS_I_12_0024		

DYNAMIC TI-BASE® **SCREWS** **PRE-MILLED** **DYNAMIC MILLING TOOL**

NON-ENGAGING (R) ENGAGING (NR)		GINGIVAL HEIGHT	DYNAMIC SCREW	STRAIGHT SCREW	COBALT-CHROME	TITANIUM	DYNAMIC MILLING TOOL	SHANK
31.322.026.01-2 31.312.026.01-2	R NR	0,5	41.318.075.01-2	40.318.008.01-2	--	--	33.390.805.01-2 33.490.805.01-2 33.690.805.01-2	3 4 6
	31.322.026.02-2 31.312.026.02-2		R NR	41.318.075.01-2				
31.323.027.01-2 31.313.027.01-2	R NR	0,3	41.320.090.01-2	40.320.008.03-2	32.213.027.01-2	32.313.027.01-2	33.390.958.01-2 33.490.958.01-2 33.690.958.01-2	3 4 6
	31.323.027.02-2 31.313.027.02-2		R NR	41.320.090.01-2				
31.323.037.01-2	R	0,6	41.320.067.01-2	40.320.007.01-2	32.213.037.01-2	32.313.037.01-2	33.315.708.01-2 33.415.708.01-2	3 4
31.313.037.01-2	NR							
31.322.003.01-2	R	0,3	41.320.065.01-2	40.320.003.02-2	--	--	33.370.716.01-2 33.470.716.01-2 33.670.716.01-2	3 4 6
31.323.024.01-2	R	0,3	41.320.060.01-2	40.320.003.02-2	32.213.024.01-2	32.313.024.01-2	33.370.716.01-2 33.470.716.01-2 33.670.716.01-2	3 4 6
31.313.024.01-2	NR							

INTRAORAL SCANBODY

MODEL	IMPLANT Ø	PLATFORM	SCANBODY	HEIGHT mm	INTRAORAL LIBRARY CODE	ADAPTOR	DIGITAL ANALOG
Deep Conical	3,5/4	2,95/3,1	52.410.103.01-2	10	DAS_I_10_0004	50.313.004.01-2	34.613.004.01-2
			52.412.103.01-2	12	DAS_I_12_0004		
	5	4,1	52.410.102.01-2	10	DAS_I_10_0005	50.314.005.01-2	34.614.005.01-2
			52.412.102.01-2	12	DAS_I_12_0005		
Internal Hex	3,75/4,2/5	Universal	52.410.101.01-2	10	DAS_I_10_0040	50.312.040.01-2	34.612.040.01-2
			52.412.101.01-2	12	DAS_I_12_0040		
Compact Conical	4,8	4,8	52.410.111.01-2	10	DAS_I_10_0025	50.313.025.01-2	34.613.025.01-2

DYNAMIC TI-BASE® **SCREWS** **PRE-MILLED** **DYNAMIC MILLING TOOL**

NON-ENGAGING (R) ENGAGING (NR)		GINGIVAL HEIGHT	DYNAMIC SCREW	STRAIGHT SCREW	COBALT-CHROME	TITANIUM	DYNAMIC MILLING TOOL	SHANK
31.323.004.01-2 31.313.004.01-2	R NR	1	41.316.076.01-2	40.316.005.02-2	32.213.004.01-2	32.313.004.01-2	33.390.754.01-2 33.490.754.01-2 33.690.754.01-2	3 4 6
31.323.004.02-2 31.313.004.02-2	R NR	2						
31.324.005.01-2 31.314.005.01-2	R NR	1	41.320.090.01-2	40.320.005.03-2	32.214.005.01-2	32.314.005.01-2	33.390.958.01-2 33.490.958.01-2 33.690.958.01-2	3 4 6
31.324.005.02-2 31.314.005.02-2	R NR	2						
31.322.040.01-2 31.312.040.01-2	R NR	0,6	41.317.071.01-2	40.317.004.01-2	32.212.040.01-2	32.312.040.01-2	33.370.716.01-2 33.470.716.01-2 33.670.716.01-2	3 4 6
31.323.025.01-2	R	0,3	41.314.039.01-2	40.314.008.01-2	--	--	33.370.716.01-2 33.470.716.01-2 33.670.716.01-2	3 4 6

INTRAORAL SCANBODY

MODEL	IMPLANT Ø	PLATFORM	SCANBODY	HEIGHT mm	INTRAORAL LIBRARY CODE	ADAPTOR	DIGITAL ANALOG
Internal Octagon	3,3/4,1/4,8	Regular 4,8	52.410.110.01-2	10	DAS_I_10_0037	50.313.037.01-2	34.613.037.01-2
			52.412.110.01-2	12	DAS_I_12_0037		
External Octagon	3,3/4,1/4,8	Regular 4,8	52.410.110.01-2	10	DAS_I_10_0074	50.313.074.01-2	34.613.074.01-2
			52.412.110.01-2	12	DAS_I_12_0074		
Bone Level	3,3	NC- 3,3	52.412.110.01-2	10	DAS_I_10_0033	50.312.033.01-2	34.612.033.01-2
			52.412.106.01-2	12	DAS_I_12_0033		
	4,1	RC-4,1	52.410.107.01-2	10	DAS_I_10_0035	50.313.035.01-2	34.613.035.01-2
			52.412.107.01-2	12	DAS_I_12_0035		
	4,8	RC-4,8	52.410.107.01-2	10	DAS_I_10_0035	50.313.035.01-2	34.613.035.01-2
			52.412.107.01-2	12	DAS_I_12_0035		

DYNAMIC TI-BASE®		SCREWS		PRE-MILLED		DYNAMIC MILLING TOOL	
------------------	--	--------	--	------------	--	----------------------	--

NON-ENGAGING (R) ENGAGING (NR)		GINGIVAL HEIGHT	DYNAMIC SCREW	STRAIGHT SCREW	COBALT-CHROME	TITANIUM	DYNAMIC MILLING TOOL	SHANK
31.323.037.01-2	R	0,6	41.320.067.01-2	40.320.007.01-2	32.213.037.01-2	32.313.037.01-2	33.315.708.01-2	3
31.313.037.01-2	NR						33.415.708.01-2	4
--	--	--	41.320.051.01-2	40.320.007.012	--	--	33.330.708.01-2	3
--	--						33.430.708.01-2	4
31.322.033.01-2	R	1,3	41.316.078.01-2	40.316.007.01-2	--	--	33.315.804.01-2	3
31.312.033.01-2	NR						33.415.804.01-2	4
31.322.033.02-2	R	2	41.316.078.01-2	40.316.007.01-2	32.213.035.01-2	32.313.035.01-2	33.615.804.01-2	6
31.312.033.02-2	NR						33.315.804.01-2	3
31.323.035.01-2	R	1,1	41.316.078.01-2	40.316.007.01-2	32.213.035.01-2	32.313.035.01-2	33.415.804.01-2	4
31.313.035.01-2	NR						33.615.804.01-2	6
31.323.035.02-2	R	2	41.316.078.01-2	40.316.007.01-2	32.213.035.01-2	32.313.035.01-2	33.315.804.01-2	3
31.313.035.02-2	NR						33.415.804.01-2	4
31.323.035.01-2	R	1,1	41.316.078.01-2	40.316.007.01-2	32.213.035.01-2	32.313.035.01-2	33.315.804.01-2	3
31.313.035.01-2	NR						33.415.804.01-2	4
31.323.035.02-2	R	2	41.316.078.01-2	40.316.007.01-2	32.213.035.01-2	32.313.035.01-2	33.615.804.01-2	6
31.313.035.02-2	NR						33.315.804.01-2	3

Compatible with - SYBRON IMPLANT SOLUTIONS

INTRAORAL SCANBODY

MODEL	IMPLANT Ø	PLATFORM	SCANBODY	HEIGHT mm	INTRAORAL LIBRARY CODE	ADAPTOR	DIGITAL ANALOG
Endopore (Innova)	4,1	4,1	52.410.101.01-2	10	DAS_I_10_0024	50.313.024.01-2	34.613.024.01-2
			52.412.101.01-2	12	DAS_I_12_0024		

Compatible with - TITANIUM-FIX

INTRAORAL SCANBODY

MODEL	IMPLANT Ø	PLATFORM	SCANBODY	HEIGHT mm	INTRAORAL LIBRARY CODE	ADAPTOR	DIGITAL ANALOG
b-fix	3,5/4	Regular	52.410.103.01-2	10	DAS_I_10_0004	50.313.004.01-2	34.613.004.01-2
			52.412.103.01-2	12	DAS_I_12_0004		
	4,5/5	Long	52.410.102.01-2	10	DAS_I_10_0005	50.314.005.01-2	34.614.005.01-2
			52.412.102.01-2	12	DAS_I_12_0005		

DYNAMIC TI-BASE® SCREWS PRE-MILLED DYNAMIC MILLING TOOL

NON-ENGAGING (R) ENGAGING (NR)		GINGIVAL HEIGHT	DYNAMIC SCREW	STRAIGHT SCREW	COBALT-CHROME	TITANIUM	DYNAMIC MILLING TOOL	SHANK
31.323.024.01-2	R	0,3	41.320.060.01-2	40.320.008.01-2	32.213.024.01-2	32.313.024.01-2	33.370.716.01-2	3
31.313.024.01-2	NR						33.470.716.01-2	4
							33.670.716.01-2	6

DYNAMIC TI-BASE® SCREWS PRE-MILLED DYNAMIC MILLING TOOL

NON-ENGAGING (R) ENGAGING (NR)		GINGIVAL HEIGHT	DYNAMIC SCREW	STRAIGHT SCREW	COBALT-CHROME	TITANIUM	DYNAMIC MILLING TOOL	SHANK
31.323.004.01-2	R	1	41.316.076.01-2	40.316.005.02-2	32.213.004.01-2	32.313.004.01-2	33.390.754.01-2	3
31.313.004.01-2	NR						33.490.754.01-2	4
31.323.004.02-2	R	2	41.316.076.01-2	40.316.005.02-2	32.213.004.01-2	32.313.004.01-2	33.690.754.01-2	6
31.313.004.02-2	NR							
31.324.005.01-2	R	1	41.320.090.01-2	40.320.005.03-2	32.214.005.01-2	32.314.005.01-2	33.390.958.01-2	3
31.314.005.01-2	NR						33.490.958.01-2	4
31.324.005.02-2	R	2	41.320.090.01-2	40.320.005.03-2	32.214.005.01-2	32.314.005.01-2	33.690.958.01-2	6
31.314.005.02-2	NR							

Compatible with - TRI DENTAL IMPLANTS

INTRAORAL SCANBODY

MODEL	IMPLANT Ø	PLATFORM	SCANBODY	HEIGHT mm	INTRAORAL LIBRARY CODE	ADAPTOR	DIGITAL ANALOG
TRI-Vent	3,75/4,1/4,7	3,5	52.410.101.01-2	10	DAS_I_10_0040	50.312.040.01-2	34.612.040.01-2
			52.412.101.01-2	12	DAS_I_12_0040		

Compatible with - TRINON

INTRAORAL SCANBODY

MODEL	IMPLANT Ø	PLATFORM	SCANBODY	HEIGHT mm	INTRAORAL LIBRARY CODE	ADAPTOR	DIGITAL ANALOG
Q2	3,5/3,75/4,5	4	52.410.101.01-2	10	DAS_I_10_0024	50.313.024.01-2	34.613.024.01-2
			52.412.101.01-2	12	DAS_I_12_0024		
QK	4	4,8	52.410.110.01-2	10	DAS_I_10_0037	50.313.037.01-2	34.613.037.01-2
			52.412.110.01-2	12	DAS_I_12_0037		

DYNAMIC TI-BASE® **SCREWS** **PRE-MILLED** **DYNAMIC MILLING TOOL**

NON-ENGAGING (R) ENGAGING (NR)	GINGIVAL HEIGHT	DYNAMIC SCREW	STRAIGHT SCREW	COBALT-CHROME	TITANIUM	DYNAMIC MILLING TOOL	SHANK
31.322.040.01-2	R	41.317.071.01-2	40.317.004.01-2	--	--	33.370.716.01-2	3
31.312.040.01-2	NR					33.470.716.01-2	4
						33.670.716.01-2	6

DYNAMIC TI-BASE® **SCREWS** **PRE-MILLED** **DYNAMIC MILLING TOOL**

NON-ENGAGING (R) ENGAGING (NR)	GINGIVAL HEIGHT	DYNAMIC SCREW	STRAIGHT SCREW	COBALT-CHROME	TITANIUM	DYNAMIC MILLING TOOL	SHANK
31.323.024.01-2	R	41.320.060.01-2	40.320.008.01-2	32.213.024.01-2	32.313.024.01-2	33.390.716.01-2	3
31.313.024.01-2	NR					33.490.716.01-2	4
						33.690.716.01-2	6
31.323.037.01-2	R	41.320.067.01-2	40.320.007.01-2	32.213.037.01-2	32.313.037.01-2	33.315.708.01-2	3
31.313.037.01-2	NR					33.415.708.01-2	4
						33.615.708.01-2	6

INTRAORAL SCANBODY

MODEL	IMPLANT Ø	PLATFORM	SCANBODY	HEIGHT mm	INTRAORAL LIBRARY CODE	ADAPTOR	DIGITAL ANALOG
Screw-Vent	3,7/4,1	3,5	52.410.101.01-2	10	DAS_I_10_0040	50.312.040.01-2	34.612.040.01-2
			52.412.101.01-2	12	DAS_I_12_0040		
	4,7	4,5	52.410.102.01-2	10	DAS_I_10_0041	50.313.041.01-2	34.613.041.01-2
			52.412.102.01-2	12	DAS_I_12_0041		
Swiss-Plus	3,7/4,1/4,8	4,8	52.410.110.01-2	10	DAS_I_10_0037	50.313.037.01-2	34.613.037.01-2
			52.412.110.01-2	12	DAS_I_12_0037		

DYNAMIC TI-BASE®		SCREWS		PRE-MILLED		DYNAMIC MILLING TOOL	
NON-ENGAGING (R) ENGAGING (NR)	GINGIVAL HEIGHT	DYNAMIC SCREW	STRAIGHT SCREW	COBALT-CHROME	TITANIUM	DYNAMIC MILLING TOOL	SHANK
31.322.040.01-2	R	41.317.071.01-2	40.317.004.01-2	32.212.040.01-2	32.312.040.01-2	33.370.716.01-2	3
31.312.040.01-2	NR					0,6	33.470.716.01-2
31.323.041.01-2	R	41.317.071.01-2	40.317.004.01-2	32.212.040.01-2	32.312.040.01-2	33.370.716.01-2	3
31.313.041.01-2	NR					0,4	33.470.716.01-2
31.323.037.01-2	R	41.320.067.01-2	40.320.007.01-2	32.213.037.01-2	32.313.037.01-2	33.315.708.01-2	3
31.313.037.01-2	NR					0,6	33.415.708.01-2
						33.615.708.01-2	6

DYNAMIC SCREWS

They cover all the thread metrics available on the market. They are used with the 3.0 Dynamic Abutment®, the 3.0 Dynamic TiBase® or milled structures with an angled screw channel of up to 30°. There are several lengths for each metric to ease adaptation to the structures. All of them are made of grade 5 titanium.



DYNAMIC SCREWDRIVER

Screwdriver with hexalobular head, exclusively to the 3.0 Dynamic Abutment® system; lengths: 18, 24, 32mm. Our screwdriver has a contra-angle connection to make it easier to use with a dynamometer or manual ratchet, with the corresponding adaptors or handles.

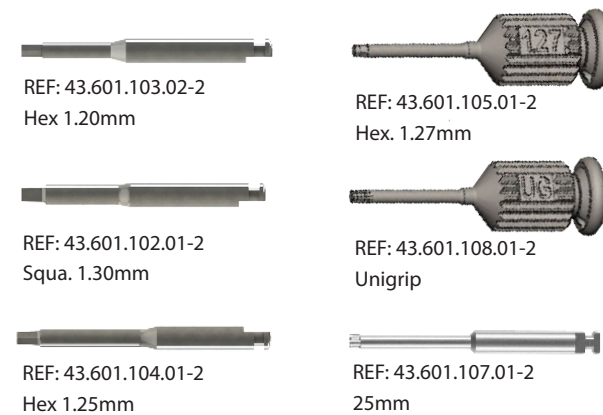


STRAIGHT SCREWS

They cover all the thread metrics available on the market. We have several lengths for each metric to make the adaptation to the milled structures easier. Made of grade 5 Titanium.



SCREWDRIVERS FOR STRAIGHT SCREWS



COMPLEMENTS



Manual handle
Made of stainless steel. They are used to connect screwdriver bits with the contra-angle connection

Large manual handle for laboratory Ref. 49.601.000.03-2
Ideal to manipulate models in the laboratory. Length 55.65mm.



Manual handle for clinic
Ref. 49.601.000.01-2
Clinic handle: used to position the prosthesis in the mouth prior to torque control in the clinic. Length: 15.65mm.



Universal manual torque wrench prosthetic
Ref. 11.990.990.07-2

Manual torque wrench adapter prosthetic

Piece to connect the screwdriver with contra-angle connection to the torque wrench.



Universal Manual torque wrench adapter
Ref. 49.604.000.05-2
4mm Square connection



Straumann Manual torque wrench adapter
Ref. 49.604.000.07-2
Straumann connection



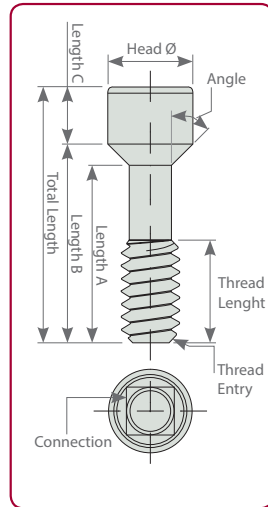
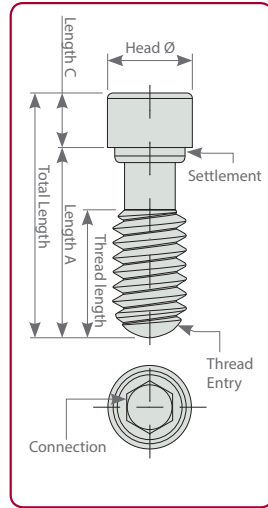
Nobel Biocare Manual torque wrench adapter
Ref. 49.604.000.08-2

Torque wrench. 4mm square connection. Torque 10-35N.c

DYNAMIC SCREWS TECHNICAL SPECIFICATIONS



REFERENCE	METRIC	TORQUE	TOTAL LENGTH	THREAD LENGTH	A LENGTH	B LENGTH	C LENGTH	HEAD DIAMETER	SEAT	ANGLE	THREAD ENTRY	CONNECTION
41.314.039.01-2	1,4	15 N·cm	3,90	1,80	2,10	-	1,80	2,40	staight	-	45° Chamfer	Hexalobular 1,70
41.314.040.01-2	1,4	15 N·cm	4,00	1,85	2,00	2,78	1,22	2,30	conical	30°	45° Chamfer	
41.314.045.01-2	1,4	15 N·cm	4,50	2,30	2,50	3,28	1,22	2,30	conical	30°	45° Chamfer	
41.314.052.01-2	1,4	15 N·cm	5,20	2,90	3,40	-	1,80	2,30	staight	-	45° Chamfer	
41.314.064.01-2	1,4	15 N·cm	6,40	2,20	4,21	5,15	1,25	2,30	conical	25°	45° Chamfer	
41.314.067.01-2	1,4	15 N·cm	6,70	2,31	5,00	5,45	1,25	2,30	conical	45°	45° Chamfer	
41.314.070.01-2	1,4	15 N·cm	7,00	2,30	5,39	5,65	1,61	2,30	conical	60°	45° Chamfer	
41.314.074.01-2	1,4	15 N·cm	7,40	3,55	5,00	5,99	1,41	2,30	conical	25°	45° Chamfer	
41.316.044.01-2	1,6	20 N·cm	4,40	2,50	2,90	-	1,50	2,30	staight	-	Semi-sphere	
41.316.059.01-2	1,6	20 N·cm	5,90	3,00	4,40	-	1,50	2,30	staight	-	Semi-sphere	
41.316.071.01-2	1,6	20 N·cm	7,10	2,80	5,20	5,53	1,57	2,30	conical	60°	45° Chamfer	
41.316.072.01-2	1,6	20 N·cm	7,20	3,50	5,20	5,85	1,35	2,30	conical	30°	45° Chamfer	
41.316.073.01-2	1,6	20 N·cm	7,30	2,20	4,87	5,56	1,74	2,30	conical	35°	45° Chamfer	
41.316.074.01-2	1,6	20 N·cm	7,40	2,70	5,50	6,00	1,40	2,30	conical	45°	45° Chamfer	
41.316.076.01-2	1,6	20 N·cm	7,60	3,60	6,10	-	1,50	2,30	staight	-	Semi-sphere	
41.316.078.01-2	1,6	20 N·cm	7,80	2,00	5,36	7,03	0,81	2,30	conical	15°	45° Chamfer	
41.316.081.01-2	1,6	20 N·cm	8,10	3,00	6,35	6,72	1,38	2,30	conical	45°	45° Chamfer	
41.316.084.01-2	1,6	20 N·cm	8,40	3,50	6,80	-	1,60	2,30	staight	-	Semi-sphere	
41.316.094.01-2	1,6	20 N·cm	9,40	2,90	7,65	8,00	1,40	2,30	conical	45°	45° Chamfer	
41.317.065.01-2	N1-72	25 N·cm	6,50	2,40	4,70	5,18	1,33	2,30	conical	45°	45° Chamfer	
41.317.071.01-2	N1-72	25 N·cm	7,10	2,60	5,56	5,65	1,45	2,30	conical	70°	45° Chamfer	
41.317.073.01-2	N1-72	25 N·cm	7,30	2,50	5,50	5,77	1,53	2,30	conical	60	45° Chamfer	
41.318.044.01-2	1,8	25 N·cm	4,40	2,75	3,00	-	1,40	2,30	staight	-	Semi-sphere	
41.318.045.01-2	1,8	25 N·cm	4,50	2,30	2,81	2,90	1,60	2,30	conical	70°	45° Chamfer	
41.318.048.01-2	1,8	25 N·cm	4,80	2,80	3,22	3,65	1,15	2,30	conical	30°	Semi-sphere	
41.318.051.01-2	1,8	25 N·cm	5,10	2,70	3,55	3,70	1,40	2,30	conical	60°	45° Chamfer	
41.318.052.01-2	1,8	25 N·cm	5,20	2,90	3,65	3,80	1,40	2,30	conical	60°	45° Chamfer	



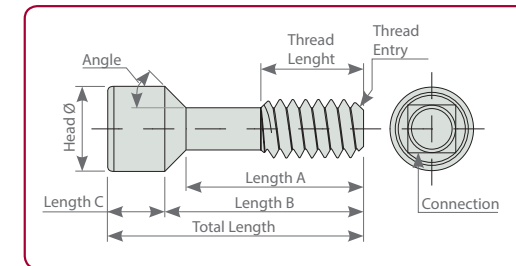
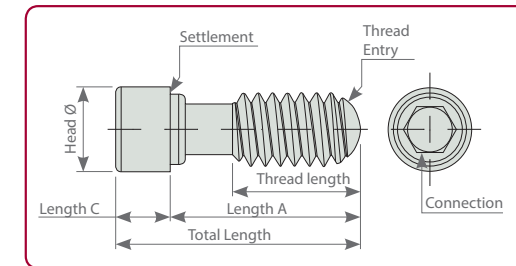
REFERENCE	METRIC	TORQUE	TOTAL LENGTH	THREAD LENGTH	A LENGTH	B LENGTH	C LENGTH	HEAD DIAMETER	SEAT	ANGLE	THREAD ENTRY	CONNECTION
41.318.064.01-2	1,8	25 N·cm	6,40	3,45	4,73	5,10	1,30	2,30	conical	35°	45° Chamfer	Hexalobular 1,70
41.318.065.01-2	1,8	25 N·cm	6,50	2,80	5,00	-	1,50	2,30	straight	-	Semi-sphere	
41.318.066.01-2	1,8	25 N·cm	6,60	4,18	5,05	5,20	1,40	2,30	conical	60°	45° Chamfer	
41.318.067.01-2	1,8	25 N·cm	6,70	2,35	5,00	5,40	1,30	2,30	conical	45°	45° Chamfer	
41.318.068.01-2	1,8	25 N·cm	6,80	4,00	5,25	5,40	1,40	2,30	conical	60°	45° Chamfer	
41.318.071.01-2	1,8	25 N·cm	7,10	2,60	5,56	5,65	1,45	2,30	conical	70°	45° Chamfer	
41.318.074.01-2	1,8	25 N·cm	7,40	3,80	5,80	6,03	1,60	2,30	conical	50°	45° Chamfer	
41.318.075.01-2	1,8	25 N·cm	7,50	3,30	6,10	-	1,40	2,30	straight	-	Semi-sphere	
41.318.076.01-2	1,8	25 N·cm	7,60	2,52	5,80	6,20	1,40	2,30	conical	45°	45° Chamfer	
41.318.080.01-2	1,8	25 N·cm	8,00	4,00	6,50	-	1,50	2,30	straight	-	45° Chamfer	
41.320.047.01-2	2,0	25 N·cm	4,70	3,00	3,30	-	1,40	2,30	straight	-	Semi-sphere	
41.320.048.01-2	2,0	25 N·cm	4,80	2,70	3,30	3,40	1,40	2,30	conical	60°	45° Chamfer	
41.320.049.01-2	2,0	25 N·cm	4,90	2,90	3,40	3,50	1,40	2,30	conical	60°	45° Chamfer	
41.320.050.01-2	2,0	25 N·cm	5,00	2,80	3,39	3,60	1,40	2,30	conical	30°	Semi-sphere	
41.320.051.01-2	2,0	25 N·cm	5,10	3,10	3,60	-	1,50	2,30	straight	-	Semi-sphere	
41.320.060.01-2	2,0	25 N·cm	6,00	2,70	4,50	-	1,50	2,30	straight	-	Semi-sphere	
41.320.065.01-2	2,0	25 N·cm	6,50	2,70	5,00	-	1,50	2,30	straight	-	45° Chamfer	
41.320.066.01-2	2,0	25 N·cm	6,60	4,18	5,11	5,20	1,40	2,30	conical	60°	45° Chamfer	
41.320.067.01-2	2,0	25 N·cm	6,70	2,30	3,65	5,68	1,02	2,58	conical	15°	45° Chamfer	
41.320.068.01-2	2,0	25 N·cm	6,80	4,40	5,30	5,40	1,40	2,30	conical	60°	45° Chamfer	
41.320.070.01-2	2,0	25 N·cm	7,00	3,00	5,60	-	1,40	2,30	straight	-	Semi-sphere	
41.320.074.01-2	2,0	25 N·cm	7,40	3,30	6,00	-	1,40	2,30	straight	-	Semi-sphere	
41.320.075.01-2	2,0	25 N·cm	7,50	2,75	5,93	6,18	1,32	2,30	conical	35°	45° Chamfer	
41.320.079.01-2	2,0	25 N·cm	7,90	3,30	6,33	6,50	1,40	2,30	conical	45°	45° Chamfer	
41.320.082.01-2	2,0	25 N·cm	8,20	4,70	6,70	-	1,50	2,40	straight	-	Semi-sphere	
41.320.090.01-2	2,0	25 N·cm	9,00	4,00	7,50	-	1,50	2,30	straight	-	Semi-sphere	
41.320.094.01-2	2,0	25 N·cm	9,4	3,00	7,85	8,00	1,40	2,30	conical	45°	45° Chamfer	
41.325.054.01-2	2,5	25 N·cm	5,40	3,80	4,10	-	1,30	2,85	straight	-	Semi-sphere	
41.325.067.01-2	2,5	25 N·cm	6,70	4,60	5,10	-	1,60	2,85	straight	-	Semi-sphere	

STRAIGHT SCREWS TECHNICAL SPECIFICATIONS



REFERENCE	METRIC	TORQUE	TOTAL LENGTH	THREAD LENGTH	A LENGTH	B LENGTH	C LENGTH	HEAD DIAMETER	SEAT	ANGLE	THREAD ENTRY	CONNECTION
40.314.008.01-2	1,4	15 N-cm	3,5	1,8	2,1	-	1,4	2	straight	-	45° Chamfer	Unigrip
40.314.003.01-2	1,4	15 N-cm	3,9	1,91	2,1	-	1,8	2,4	straight	-	45° Chamfer	Hex. 1,20
40.314.003.02-2	1,4	15 N-cm	4	2	2,2	-	1,8	2,3	straight	-	45° Chamfer	Hex. 1,20
40.314.005.01-2	1,4	15 N-cm	7,6	3,55	5,17	6	1,6	2,15	conical	25°	45° Chamfer	Hex. 1,27
40.316.002.01-2	1,6	20 N-cm	7	2,79	4,86	5,44	1,56	2,3	conical	45°	45° Chamfer	Sq. 1,30
40.316.008.01-2	1,6	20 N-cm	7	2,7	5,15	-	1,8	2,3	straight	-	45° Chamfer	Unigrip
40.316.008.02-2	1,6	20 N-cm	7,3	2,7	5,15	5,9	1,4	2,2	conical	35°	45° Chamfer	Unigrip
40.316.005.01-2	1,6	20 N-cm	7,5	3,6	5,33	5,85	1,65	2,15	conical	30°	45° Chamfer	Hex. 1,27
40.316.007.01-2	1,6	20 N-cm	7,9	2	5,72	6,9	2,18	2,18	conical	15°	45° Chamfer	Torx T6
40.316.005.02-2	1,6	20 N-cm	8,2	3,03	6,25	-	2	2,33	straight	-	45° Chamfer	Hex. 1,27
40.316.005.03-2	1,6	20 N-cm	8,25	3,03	6,25	-	2	2,45	straight	-	45° Chamfer	Hex. 1,27
40.316.003.01-2	1,6	20 N-cm	8,4	2,5	6,6	-	1,8	2	straight	-	45° Chamfer	Hex. 1,20
40.316.002.02-2	1,6	20 N-cm	9,3	3,3	7,3	-	2	2,3	straight	-	Semi-sphere	Sq. 1,30
40.316.005.04-2	1,6	20 N-cm	10,5	2,9	8,15	8,4	2,1	2,1	conical	45°	45° Chamfer	Hex. 1,27
40.318.005.01-2	1,8	25 N-cm	4,5	2,3	2,8	2,9	1,6	2,35	conical	70°	45° Chamfer	Hex. 1,27
40.318.006.01-2	1,8	25 N-cm	6	3,18	3,5	3,85	2,15	2,4	conical	45°	45° Chamfer	Hex. 1,50
40.318.003.01-2	1,8	25 N-cm	6,8	3,3	5,2	-	1,6	2,3	straight	-	45° Chamfer	Hex. 1,20
40.318.002.01-2	1,8	25 N-cm	7	3,2	5,2	-	1,8	2,5	straight	-	45° Chamfer	Sq. 1,30
40.318.004.01-2	1,8	25 N-cm	7,2	4,47	2,3	6,2	1	2,4	conical	30°	45° Chamfer	Hex. 1,25
40.318.005.02-2	1,8	25 N-cm	7,6	3,8	5,8	6,05	1,55	2,35	conical	50°	45° Chamfer	Hex. 1,27
40.318.008.01-2	1,8	25 N-cm	8,3	2,5	6,5	-	1,8	2,45	straight	-	45° Chamfer	Unigrip
40.318.004.02-2	1,8	25 N-cm	9,8	5,094	8,3	8,8	1	2,4	conical	30°	45° Chamfer	Hex. 1,25
40.318.002.02-2	1,8	25 N-cm	8,3	2,6	6,6	-	1,7	2,45	straight	-	45° Chamfer	Sq. 1,30
40.317.004.01-2	N1-72	25 N-cm	7,6	2,8	5,6	5,76	1,84	2,3	conical	70°	45° Chamfer	Hex. 1,25

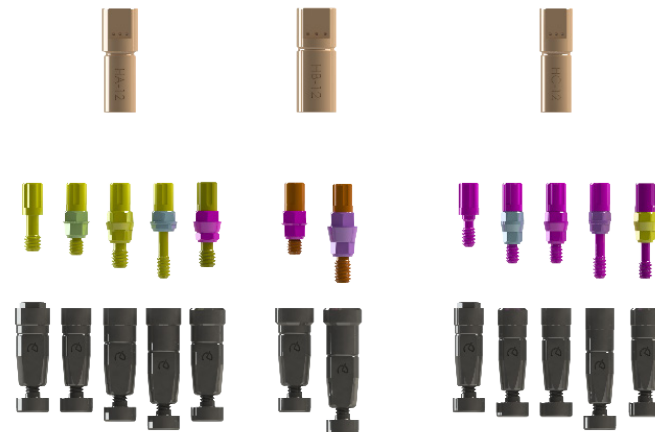
REFERENCE	METRIC	TORQUE	TOTAL LENGTH	THREAD LENGTH	A LENGTH	B LENGTH	C LENGTH	HEAD DIAMETER	SEAT	ANGLE	THREAD ENTRY	CONNECTION
40.317.002.01-2	N1-72	25 N-cm	8,17	3	5,31	5,87	2,3	2,4	conical	45°	45° Chamfer	Sq. 1,30
40.320.003.01-2	2	30 N-cm	4,7	2,7	3,33	-	1,37	2,35	straight	-	45° Chamfer	Hex. 1,20
40.320.002.01-2	2	30 N-cm	5	3,06	3,26	3,5	1,5	2,49	conical	45°	45° Chamfer	Sq. 1,30
40.320.007.01-2	2	30 N-cm	6,7	2,25	3,59	5,7	1	2,58	conical	15°	45° Chamfer	Torx T6
40.320.003.02-2	2	30 N-cm	7	3,25	5	-	2	2,4	straight	-	45° Chamfer	Hex. 1,20
40.320.008.01-2	2	30 N-cm	7	3,25	5	-	2	2,4	straight	-	45° Chamfer	Unigrip
40.320.008.02-2	2	30 N-cm	7,3	3	5,8	6,2	1,1	2,5	conical	35°	45° Chamfer	Unigrip
40.320.007.02-2	2	30 N-cm	7,4	3,3	6	-	1,4	2,3	straight	-	Semi-sphere	Torx T6
40.320.003.03-2	2	30 N-cm	7,4	3,34	5,1	5,6	1,8	2,4	conical	45°	45° Chamfer	Hex. 1,20
40.320.002.02-2	2	30 N-cm	7,45	3	5,7	5,9	1,5	2,4	conical	45°	45° Chamfer	Sq. 1,30
40.320.007.03-2	2	30 N-cm	7,6	3	6,1	6,3	1,3	2,4	conical	45°	Semi-sphere	Torx T6
40.320.005.01-2	2	30 N-cm	7,6	3,7	6	-	1,6	2,4	straight	-	45° Chamfer	Hex. 1,27
40.320.008.03-2	2	30 N-cm	10	3,6	8,5	-	1,5	2,45	straight	-	45° Chamfer	Unigrip
40.320.002.03-2	2	30 N-cm	10,2	3,15	8,4	-	1,8	2,45	straight	-	45° Chamfer	Sq. 1,30
40.320.005.02-2	2	30 N-cm	10,3	4	8,3	-	2	2,45	straight	-	45° Chamfer	Hex. 1,27
40.320.005.03-2	2	30 N-cm	10,3	3,5	8,3	-	2	2,33	straight	-	45° Chamfer	Hex. 1,27
40.320.005.04-2	2	30 N-cm	10,5	3,06	8,15	8,4	2,1	2,5	conical	45°	45° Chamfer	Hex. 1,27
40.325.002.01-2	2,5	30 N-cm	7,41	3,5	4,75	5,29	2,12	2,87	conical	45°	Semi-sphere	Sq. 1,30



INTRAORAL SYSTEM COLORS ACCORDING TO COMPATIBILITY

NUMBER	CONNECTION	PLATFORM	SCANBODY TYPE	ADAPTOR REFERENCE	MIDDLE PIECE	MAGNETIC SCREW
1	Nobel Biocare Branemark	4.1	HA	50.313.024.01-2	X	
2	Zimmer Screw-vent	3.5	HA	50.312.040.01-2		
3	Nobel Biocare Active	RP	HA	50.313.022.01-2		
4	Biomet 3I Certain	RP	HA	50.313.002.01-2		
5	Osstem TS	RP	HA	50.313.030.01-2		
6	Zimmer Screw-vent	4.5	HB	50.313.041.01-2		
7	Astra Lilac	WP	HB	50.314.005.01-2		
8	Nobel Biocare Branemark	NP	HC	50.312.023.01-2	X	
9	Astra Aqua	RP	HC	50.313.004.01-2		
10	Nobel Biocare Active	NP	HC	50.312.021.01-2		
11	Biomet 3I Certain	NP	HC	50.312.001.01-2		
12	Osstem TS	NP	HC	50.312.029.01-2		

*Full compatibility chart in the CadCam Intraoral Solutions catalogue



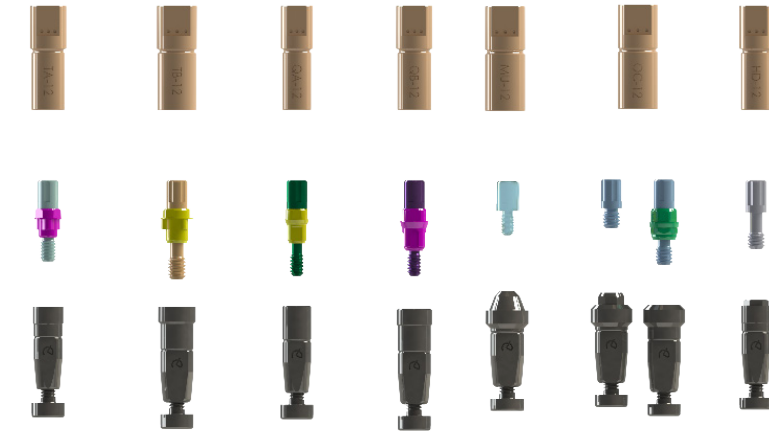
NUMBER	CONNECTION	PLATFORM	SCANBODY TYPE	ADAPTOR REFERENCE	MIDDLE PIECE	MAGNETIC SCREW
13	Nobel Biocare Replace	3.5	TA	50.312.026.01-2		
14	Nobel Biocare Replace	4.3	TB	50.313.027.01-2		
15	Straumann Bone Level	NP	SA	50.312.033.01-2		
16	Straumann Bone Level	RP	SB	50.313.035.01-2		
17	Nobel Biocare Multi-Unit	RP	MA	50.313.025.01-2	X	
18	Straumann Synocta	4.8	OA	50.313.074.01-2	X	
19	Straumann Internal Octagon	4.8	OA	50.313.037.01-2		
20	Biomet 3I Osseotite	3.3	HD	50.312.003.01-2	X	

*Full compatibility chart in the CadCam Intraoral Solutions catalogue

INTRAORAL ADAPTOR SCREWDRIVER:

43.624.410.01-2
(Lenght 24mm)

43.630.410.01-2
(Lenght 30mm)



Dynamic Milling Tool

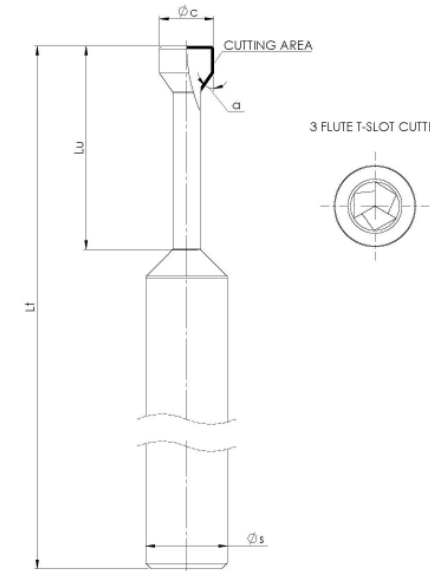
Reference code:

33.(4)(45).(80)(4).01-2

Shank Cutting seat Cutting diameter code Useful length



DYNAMIC MILLING TOOL SPECIFICATIONS



CONNECTION*	REFERENCE	CUTTING DIAMETER	SEAT	USEFUL LENGTH (max drilling depth)	SUPPORT DIAMETER (SHANK)	TOTAL LENGTH
		ϕ_c	α	L_u	ϕ_s	L_t
STRAUMANN BONE LEVEL NP STRAUMANN BONE LEVEL RP	33.315.804.01-2	1,6	15	8	3	50
	33.415.804.01-2	1,6	15	8	4	50
	33.615.804.01-2	1,6	15	8	6	50
NOBEL BIOCARE ACTIVE NP	33.335.754.01-2	1,6	35	7,5	3	50
	33.435.754.01-2	1,6	35	7,5	4	50
	33.635.754.01-2	1,6	35	7,5	6	50
OSSTEM TS NP	33.345.804.01-2	1,6	45	8	3	50
	33.445.804.01-2	1,6	45	8	4	50
	33.645.804.01-2	1,6	45	8	6	50
BIOMET 3I CERTAIN NP ASTRA AQUA	33.390.754.01-2	1,6	90	7,5	3	50
	33.490.754.01-2	1,6	90	7,5	4	50
	33.690.754.01-2	1,6	90	7,5	6	50
BIOMET 3I CERTAIN RP NOBEL BIOCARE BRANEMARK NP NOBEL BIOCARE REPLACE NP	33.390.805.01-2	1,7	90	8	3	50
	33.490.805.01-2	1,7	90	8	4	50
	33.690.805.01-2	1,7	90	8	6	50
ZIMMER SCREW-VENT 3.5 ZIMMER SCREW-VENT 4.5	33.370.716.01-2	1,8	70	7,1	3	50
	33.470.716.01-2	1,8	70	7,1	4	50
	33.670.716.01-2	1,8	70	7,1	6	50
NOBEL BIOCARE BRANEMARK RP NOBEL BIOCARE MULTI-UNIT RP BIOMET 3I OSSEOTITE NP	33.390.716.01-2	1,8	90	7,1	3	50
	33.490.716.01-2	1,8	90	7,1	4	50
	33.690.716.01-2	1,8	90	7,1	6	50
STRAUMANN INTERNAL OCTAGON RP	33.315.708.01-2	2	15	7	3	50
	33.415.708.01-2	2	15	7	4	50
	33.615.708.01-2	2	15	7	6	50
STRAUMANN SYNOCSTA RP	33.330.708.01-2	2	30	7	3	50
	33.430.708.01-2	2	30	7	4	50
	33.630.708.01-2	2	30	7	6	50
NOBEL BIOCARE ACTIVE RP	33.335.758.01-2	2	35	7,5	3	50
	33.435.758.01-2	2	35	7,5	4	50
	33.635.758.01-2	2	35	7,5	6	50
OSSTEM TS RP	33.345.808.01-2	2	45	8	3	50
	33.445.808.01-2	2	45	8	4	50
	33.645.808.01-2	2	45	8	6	50
NOBEL BIOCARE REPLACE RP ASTRA LILAC	33.390.958.01-2	2	90	9,5	3	50
	33.490.958.01-2	2	90	9,5	4	50
	33.690.958.01-2	2	90	9,5	6	50

*Full compatibility chart in the CadCam Intraoral Solutions catalogue

TALLADIUM GUARANTEE

TERMS AND CONDITIONS

These guarantee terms and conditions (“T&C”) cover the entire range of Talladium products (“Products”), manufactured by TALLADIUM ESPAÑA S.L. and distributed by Geoda Medical S.L. or official dealers. The guarantee described in these T&C is exclusively in benefit of the clinician (“Clinician”) and of the dental technician (“Technician”) and not for the benefit of third parties or institutions, including patients.

GUARANTEE PERIOD

TALLADIUM ESPAÑA S.L. offers a lifelong guarantee for its entire range of products starting from the date of issue of the invoice.

GUARANTEE SCOPE

Subject to the limitations and exceptions described in these T&C, TALLADIUM ESPAÑA S.L. will offer the following benefits:

QUALITY: If there are defects in the materials or in the manufacturing of the Product, TALLADIUM ESPAÑA S.L. will replace the Product with no additional cost.

SAFETY: If, having complied with all the product indications, the prosthesis should have to be made again, due to a fault in the Dynamic Abutment® or Dynamic Titanium Base® system, TALLADIUM ESPAÑA S.L. will replace the abutments and screws necessary to remake the prosthesis, as well as the costs derived from its manufacturing.

In case of having used our products and having complied with all the product indications, the implants suffer any damage, TALLADIUM ESPAÑA S.L. will pay the cost of the implants. This coverage will only be valid during the first 6 months after the collocation of the prosthesis which includes our products.

CLAIM REQUIREMENTS AND PROCEDURE

To receive the benefits indicated in these T&C, the treating Clinician must satisfy the following requirements:

- a) The claim must be notified to TALLADIUM ESPAÑA S.L. within (30) days since the date the claimed defect was detected.
- b) This requires that the Clinician or Technician must contact the customer service department by telephone or by e-mail to make the claim.
- c) A claim form will be completed, which, together with a document or report which justifies the faulty Product and the faulty Product itself, will be sent by the customer to TALLADIUM ESPAÑA S.L. offices, within the previously indicated period.
- d) Clinicians or Technicians presenting a claim in agreement with these T&C must be up to date in any payments owing to TALLADIUM ESPAÑA S.L. or to any of its subsidiaries, at the time when the claim form is presented.
- e) All the use procedures of our Products must be carried out in agreement with the instructions of TALLADIUM ESPAÑA S.L. as well as in accordance with commonly accepted dentistry practices.
- f) The expenses derived from this procedure will be assumed by the customer. The return shipping costs will be assumed by TALLADIUM ESPAÑA S.L. in all those cases covered by these T&C.

Regardless of the guarantee rights, claims should be notified as soon as possible in order to comply with regulatory requirements.

GENERAL LIMITATIONS OF THIS GUARANTEE

With the exception of the guarantee described in these T&C, neither TALLADIUM ESPAÑA S.L. nor its representatives, nor third parties manufacturing or distributing the Products, represent or offer a guarantee, agreement or any other express or implicit, oral or written, commitment, with respect to the Products (without limitation), including guarantees involved in the marketing, durability or suitability for individual uses or purposes.

In addition and within the maximum extent permitted by the relative law, TALLADIUM ESPAÑA S.L. rejects (on its own behalf, and on behalf of its representatives and third parties that manufacture or distribute Products) any responsibility with respect to any direct or indirect damage caused, which may result from or be a consequence of the design, composition of the dental prosthesis into which the Products are integrated.

GUARANTEE EXCLUSIONS

TALLADIUM ESPAÑA S.L. limits this guarantee to:

- Transformed abutments that form part of the dental prosthesis. But not the screws used to anchor them.
- Problems derived from the use of laboratory screws for the definite fixation of the prosthesis. TALLADIUM ESPAÑA S.L. has clinical screws that satisfy that function.
- Clinical screws that have been in the mouth for more than 2 years, as it is understood that the patient has to have annual check-ups with the subsequent change of screws.
- The fault is due to normal wear and tear.

AMENDMENT OR SUSPENSION OF THE GUARANTEE

TALLADIUM ESPAÑA S.L. reserves the right to amend or withdraw these T&C at any time and without prior notification. Any modification or suspension shall not affect products already placed in patients.

NOTES:

NOTES:

A large, empty rectangular box with rounded corners, intended for taking notes.



AV. BLONDEL, 54 3º · 25002 · LLEIDA (SPAIN)
TEL. +34 973 289 580
das@dynamicabutment.com
www.dynamicabutment.com



AV. BLONDEL, 54 3º · 25002 · LLEIDA (SPAIN)
TEL. +34 973 289 580
das@dynamicabutment.com
www.dynamicabutment.com

DYNAMIC ABUTMENT® SOLUTIONS