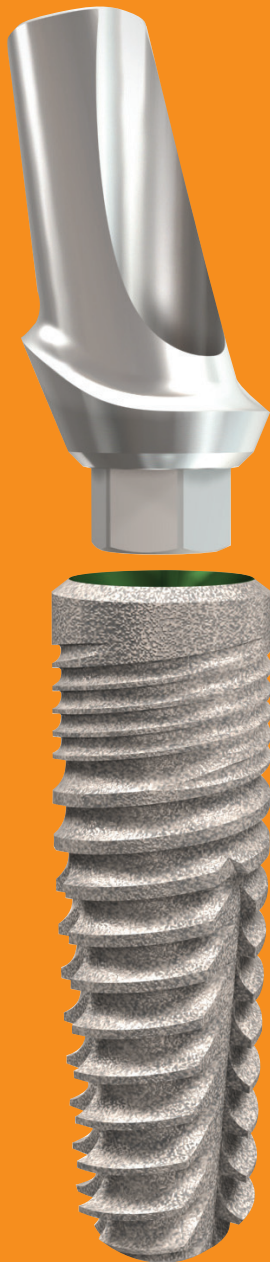




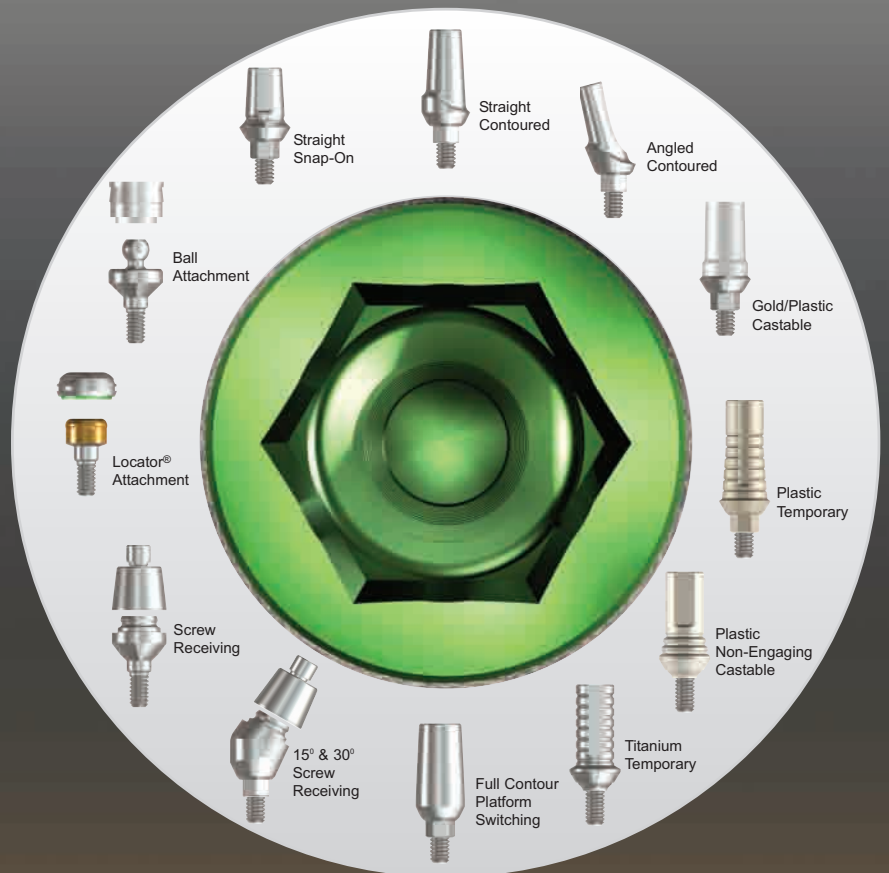
Implant
Direct™

simply smarter.

Legacy™ Prosthetic Catalog

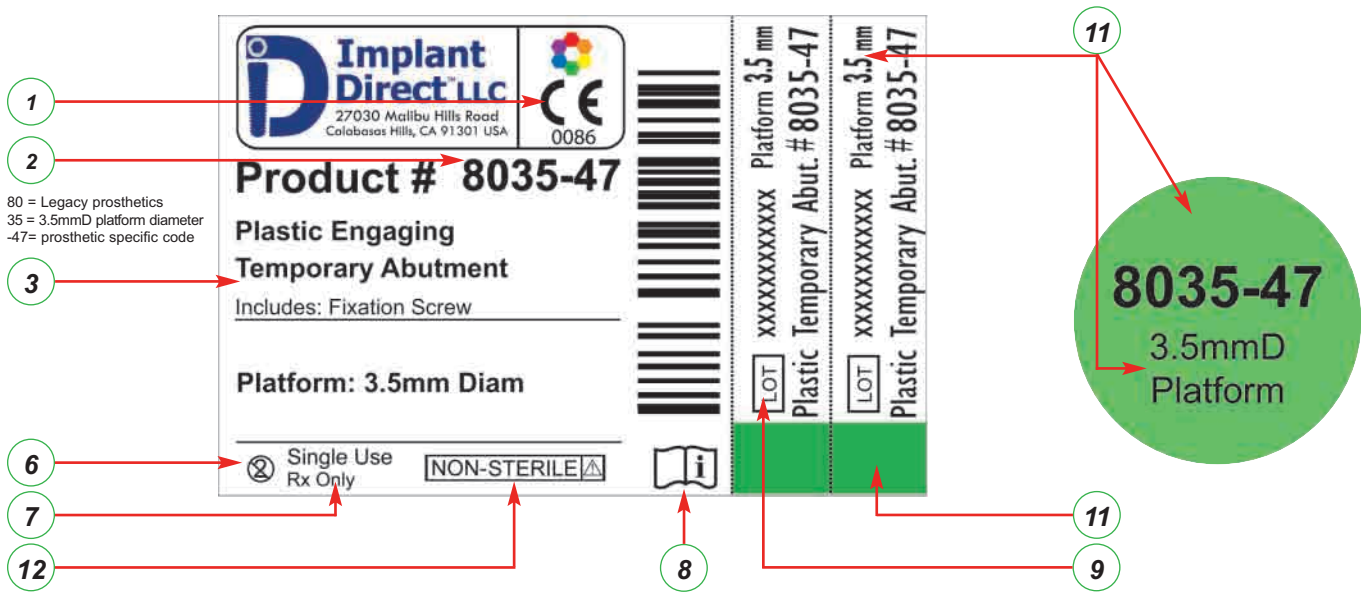


Legacy2





Legacy *Prosthetic* Vial and Cap Label



- | | |
|--|---|
| | 1) Implant direct products carry the CE mark and fulfill the requirements of the Medical Device Directive 93/42/EEC |
| | 2) Product code or reference number |
| | 3) Product description |
| | 4) Use before expiration date (XXXXXX) |
| | 5) Gamma sterilization symbol |
| | 6) Single-use only symbol |
| | 7) Caution: US law restricts the sale of these devices by or on the order of a dentist or physician |
| | 8) Refer to Instructions For Use (IFU) |
| | 9) Lot number (XXXXXXXXXX) |
| | 10) Implant body diameter color reference on surgical tray |
| | 11) Implant prosthetic platform diameter (written and color coded) |
| | 12) Non-sterile |



Legacy Fixture-Mount Packaging

The implant is mounted on a color-coded Transfer/Carrier.
A cover screw and extender are included in each vial.

Prepare surgical site with double cutting step drill



All of Implant Direct's implants come in a sterile vial



Each label is color-coded with two tear-off labels



Each cap is color coded by platform diameter of implant



Drop implant assembly out of vial onto a sterile surface



Remove implant assembly with insertion tool & drill or ratchet



Insert implant into osteotomy



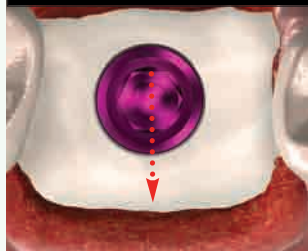
Index fixture-mount flat to labial



Remove fixture-mount



The flat of the fixture mount aligned the flat to the labial



Remove the holder containing the cover screw & extender



Unscrew the cover screw & extender



Attach the cover screw to implant



Suture soft tissue over cover screw



Attach the cover screw and extender to implant



Suture soft tissue around cover screw and extender





Orienting the 15° Angled Abutment

The flat side of the transfer [Fig. 1] or Hexagon Tool [Fig. 2] and the angle of the 15° abutment [Fig. 3] are manufactured to align with the flat of the implant's internal hexagon.



Fig. 1
Fixture Mount/
Transfer

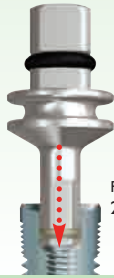


Fig. 2
2.5mmD Hex Tool

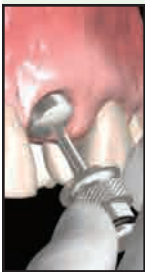


Fig. 3 The two-piece, 15° Angled
Abutment consists of an angled
body and a fixation screw



To establish the optimum angle of the abutment, index the flat surface of the Fixture Mount/Transfer either toward or away from the desired direction of abutment angle at the time of implant placement.

Option 1 : Attaching an Angled Abutment and **chairside procedures** for preparation



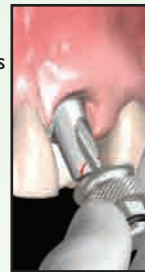
Remove the Healing Collar with a 1.25mmD Hex Tool



Attach the abutment with the 1.25mmD Hex Tool



Mark the required modifications to achieve appropriate clearance

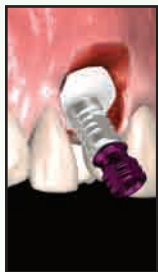


Detach the abutment with the 1.25mmD Hex Tool



Attach the abutment to the corresponding Implant Analog
Reduce the abutment to achieve appropriate clearance

Option 2 : Stage-One transfer followed by **laboratory procedures** for abutment preparation and provisionalization



During implant placement, index the flat of the Fixture-Mount



With Fixture-Mount in place make a conventional transfer impression



Attach the Cover Screw and submerge implant



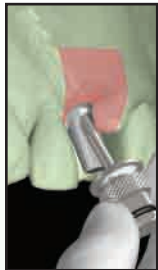
The Fixture-Mount is retained within the impression material when it is removed



Pour the working cast in dental stone with soft tissue replication material



Remove the impression from the working cast exposing top of Implant Analog



Attach the Angled Abutment to the Implant Analog in the working cast with a 1.25mmD Hex Tool



Modify angle of abutment and refine margins as required



Fabricate the temporary crown



At Stage-2 Surgery, Attach the prepared abutment, tighten to 30 Ncm with a Torque Wrench



Occlude screw access hole and confirm contour of restoration



Cement the provisional restoration

Common procedures for abutment placement, margin finessing, impressing and placement of restoration



Tighten to 30 Ncm with a Torque Wrench



Finesse the margins with a high-speed bur and copious irrigation prior to final impressing



Make an impression following standard clinical procedures



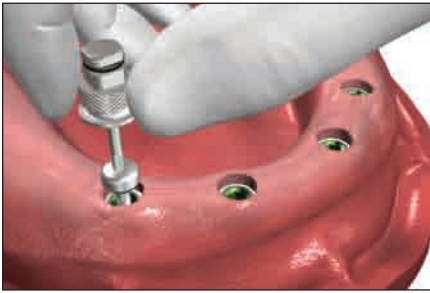
Attach provisional restoration and cement onto the prepared abutment



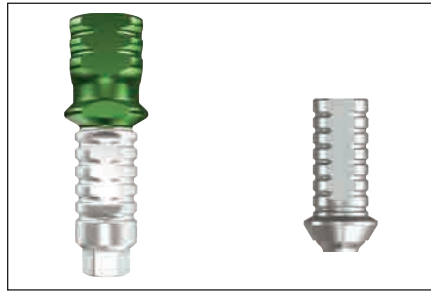
Follow standard laboratory procedures, fabricate the final restoration and cement onto the prepared abutment



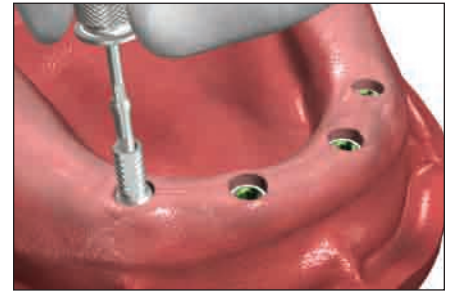
Clinical Procedures for Titanium Temporary Abutment/Fixture-Mount



1. Unthread the healing collars from the implant using 1.25mmD Hex Tool. The top of the implants are exposed.



2. Use the prepared implant fixture mount as a temporary abutment or select the Titanium Temporary Abutment matching the implant prosthetic platform.



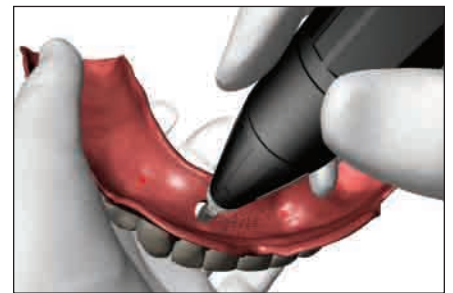
3. Place the fixation screw through the abutment and tighten in place using the appropriate 1.25mmD Hex Tool. The torque value of the fixation screw is determined by clinician. Standard torque value for fixation screws is 30Ncm.



4. Confirm there is less than 40 degrees of relative divergence between abutments to be splinted together



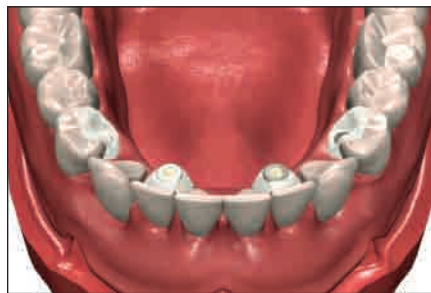
5. Mark position of Titanium Temporary Abutments on under surface of denture with indelible marker.



6. Use acrylic trimmer to drill holes through denture corresponding to marked positions.



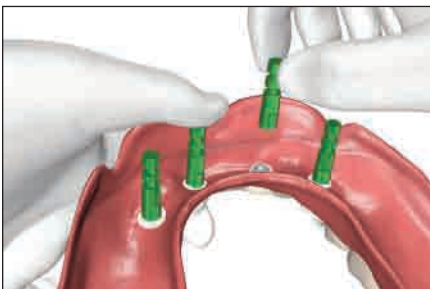
7. Seat denture over Titanium Temporary Abutment to confirm passive placement. Check occlusion with opposing arch. Occlude screw access hole with cotton pellet.



8. Use autopolymerizing acrylic or similar light cure material to attach prosthesis to Titanium Temporary Abutments. Allow to set prior to removal from mouth.



9. Remove prosthesis from the mouth, flip over to expose tissue side. Use additional autopolymerizing resin to fill in any voids around the processed abutments



10. Optional step: Attach implant analogs to base of denture. Pour a soft tissue working cast to prevent engagement with undercuts. Articulate with opposing arch.



11. Remove denture and trim the prosthesis to allow access for patient cleaning. The prosthesis is now a fixed restoration, removable by clinician only.

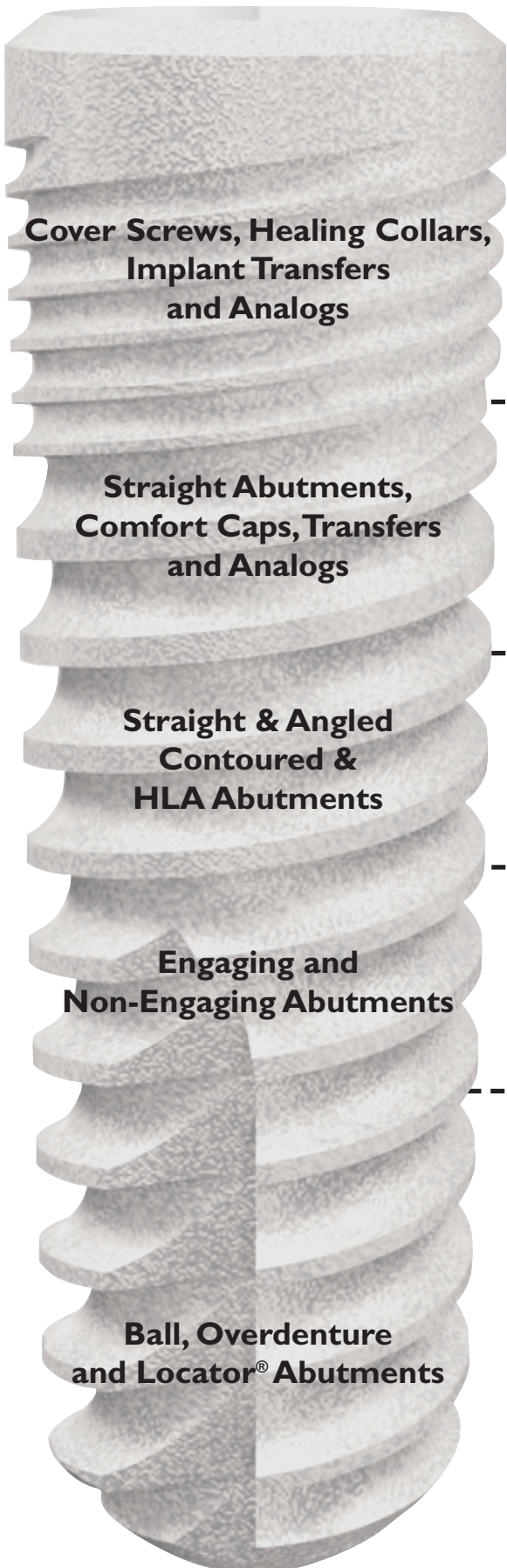


12. Attach prosthesis to implants and tighten in place using the appropriate tooling. Occlude screw access holes with material of choice.



3.0mmD Platform

3.5mmD Platform



Cover Screws, Healing Collars, Implant Transfers and Analogs

Straight Abutments, Comfort Caps, Transfers and Analogs

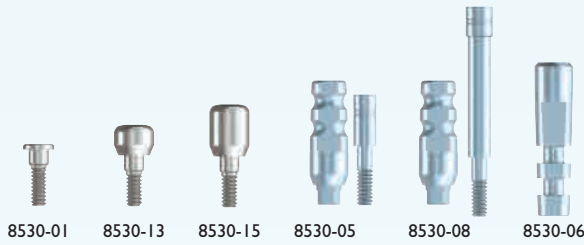
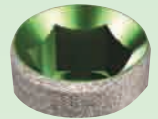
Straight & Angled Contoured & HLA Abutments

Engaging and Non-Engaging Abutments

Ball, Overdenture and Locator® Abutments



Fixture Mount



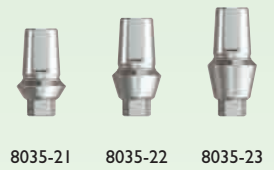
8530-01 8530-13 8530-15 8530-05 8530-08 8530-06



8035-01 8035-13 8035-15



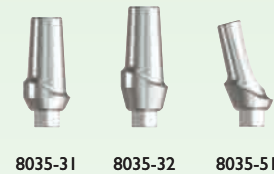
8530-21 8530-22 8530-23 3037-26 8537 8537-02



8035-21 8035-22 8035-23



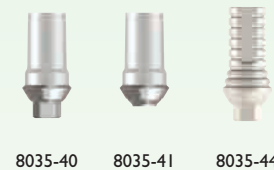
8530-31 8530-32 8530-51 8530-52



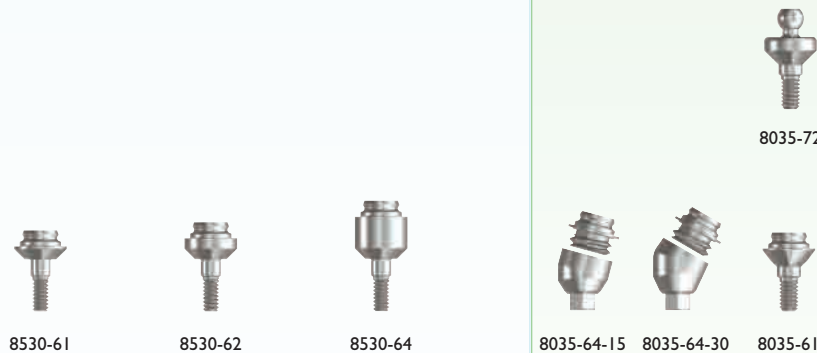
8035-31 8035-32 8035-51



8530-40 8530-41 8530-46 8530-47 8530-49



8035-40 8035-41 8035-44



8530-61 8530-62 8530-64



8035-72 8035-64-15 8035-64-30 8035-61



8035-90 8035-91 8035-92



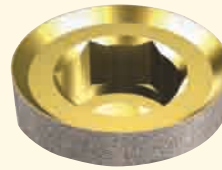
Fixture Mount

4.5mmD Platform

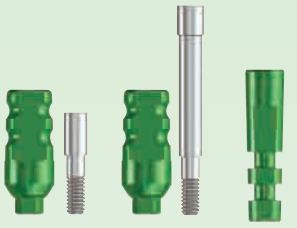


Fixture Mount

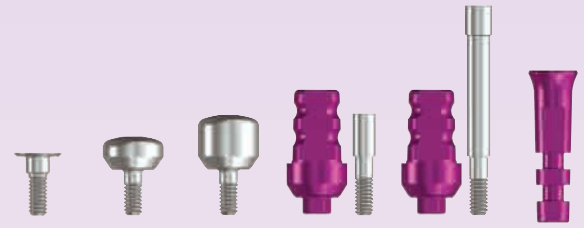
5.7mmD Platform



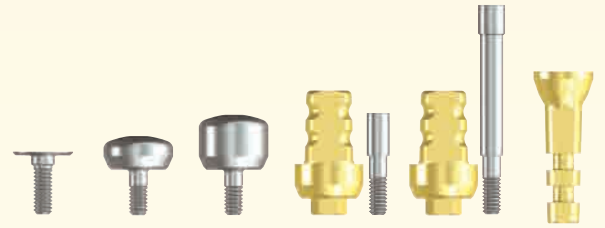
Fixture Mount



8035-05 8035-08 8035-06



8045-01 8045-13 8045-15 8045-05 8045-08 8045-06



8057-01 8057-13 8057-15 8057-05 8057-08 8057-06



3047-26 3047 3047-02



8045-21 8045-22 8045-23 3057-26 3057 3057-02



8057-21 8057-22 8057-23 3065-26 3065 3065-02



8035-52 HLA3-4 HLA3-5



8045-31 8045-32 8045-51 8045-52 HLA4-5 HLA4-6



8057-31 8057-32 8057-51 8057-52 HLA5-6 HLA5-7



8035-46 8035-47 8035-49



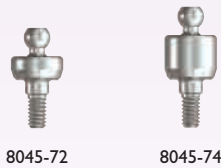
8045-40 8045-41 8045-44 8045-46 8045-47 8045-49



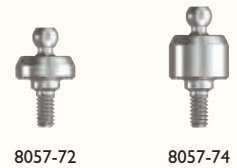
8057-40 8057-44 8057-46 8057-47 8057-49



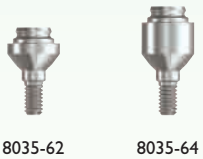
8035-74



8045-72 8045-74



8057-72 8057-74



8035-62 8035-64



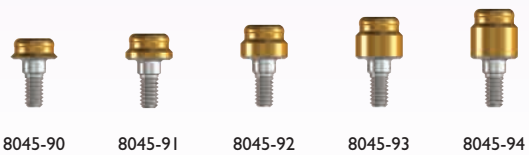
8045-64-15 8045-64-30 8045-61 8045-62 8045-64



8057-61 8057-62 8057-64



8035-93 8035-94



8045-90 8045-91 8045-92 8045-93 8045-94



8057-91 8057-92 8057-93 8057-94



Cover Screws, Healing Collars, Transfers & Analogs

Surgical Cover Screws

Requires 1.25mmD Hex Tool

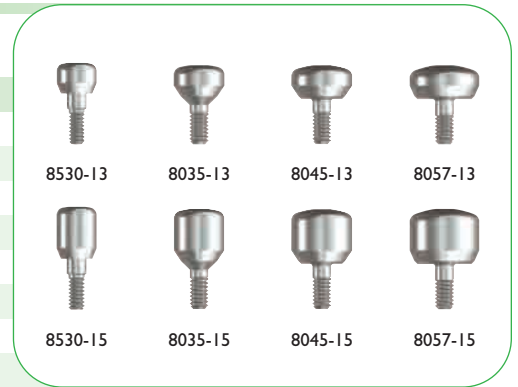
Code	Platform	Price
8530-01	3.0mmD	\$20.00
8035-01	3.5mmD	\$20.00
8045-01	4.5mmD	\$20.00
8057-01	5.7mmD	\$20.00



Healing Collars

Requires 1.25mmD Hex Tool

Code	Platform	Width	Length	Price
8530-13	3.0mmD	3.8mmD	3mmL	\$30.00
8530-15	3.0mmD	3.8mmD	5mmL	\$30.00
8035-13	3.5mmD	4.8mmD	3mmL	\$30.00
8035-15	3.5mmD	4.8mmD	5mmL	\$30.00
8045-13	4.5mmD	5.8mmD	3mmL	\$30.00
8045-15	4.5mmD	5.8mmD	5mmL	\$30.00
8057-13	5.7mmD	6.6mmD	3mmL	\$30.00
8057-15	5.7mmD	6.6mmD	5mmL	\$30.00



Closed-Tray Implant Transfers

Price includes Fixation Screw with 1.25mmD Hex

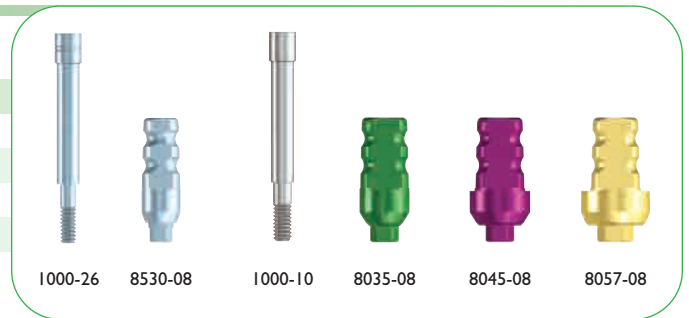
Code	Platform	Replacement Screw	Price
8530-05	3.0mmD	1000-09	\$30.00
8035-05	3.5mmD	1000-06	\$30.00
8045-05	4.5mmD	1000-06	\$30.00
8057-05	5.7mmD	1000-06	\$30.00



Open-Tray Implant Transfers

Price includes Fixation Screw with 1.25mmD Hex

Code	Platform	Replacement Screw	Price
8530-08	3.0mmD	1000-26	\$30.00
8035-08	3.5mmD	1000-10	\$30.00
8045-08	4.5mmD	1000-10	\$30.00
8057-08	5.7mmD	1000-10	\$30.00



Implant Analogs

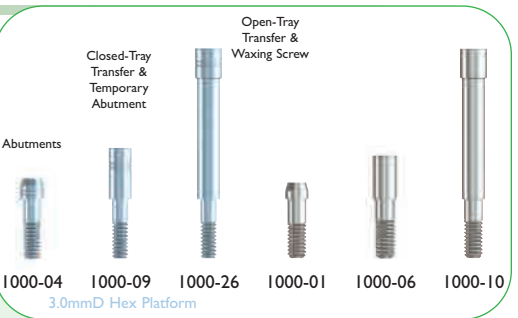
Code	Platform	Price
8530-06	3.0mmD	\$20.00
8035-06	3.5mmD	\$20.00
8045-06	4.5mmD	\$20.00
8057-06	5.7mmD	\$20.00



Replacement Fixation Screws

Requires 1.25mmD Hex Tool

Code	Description	Price (includes two pieces)
1000-04	For use with 3.0 hexagon platform	\$30.00
1000-09	For use with 3.0 hexagon platform	\$30.00
1000-26	For use with 3.0 hexagon platform	\$30.00
1000-01	For use with 3.5, 4.5 & 5.7mmD hexagon platforms	\$30.00
1000-06	For use with 3.5, 4.5 & 5.7mmD hexagon platforms	\$30.00
1000-10	For use with 3.5, 4.5 & 5.7mmD hexagon platforms	\$30.00



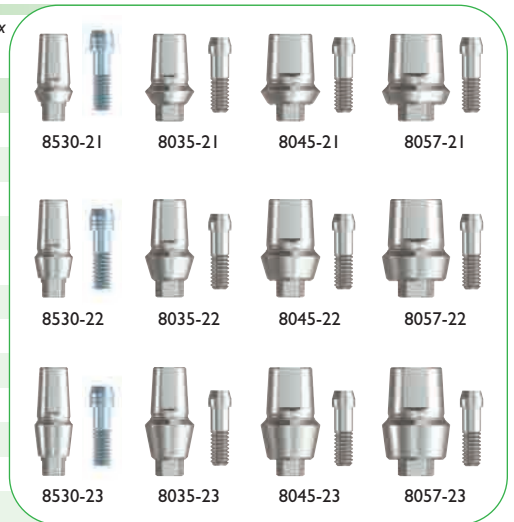


Straight Abutments, Snap-on Transfers and Lab Analogs

Straight Abutments

Includes Transfer, Comfort Cap & Fixation Screw with 1.25mmD Hex

Code	Platform	Collar Heights	Use Analog	Price
8530-21	3.0mmD	1.0mm	8537	\$85.00
8530-22	3.0mmD	2.0mm	8537	\$85.00
8530-23	3.0mmD	3.0mm	8537	\$85.00
8035-21	3.5mmD	1.0mm	3047	\$85.00
8035-22	3.5mmD	2.0mm	3047	\$85.00
8035-23	3.5mmD	3.0mm	3047	\$85.00
8045-21	4.5mmD	1.0mm	3057	\$85.00
8045-22	4.5mmD	2.0mm	3057	\$85.00
8045-23	4.5mmD	3.0mm	3057	\$85.00
8057-21	5.7mmD	1.0mm	3065	\$85.00
8057-22	5.7mmD	2.0mm	3065	\$85.00
8057-23	5.7mmD	3.0mm	3065	\$85.00



Straight Abutment Transfers

Code	Abutment Width	Price (includes two pieces)
8537-02	3.7mmD	\$30.00
3047-02	4.7mmD	\$30.00
3057-02	5.7mmD	\$30.00
3065-02	6.5mmD	\$30.00



Straight Abutment Comfort Caps

Code	Abutment Width	Price (includes two pieces)
3037-26	3.7mmD	\$30.00
3047-26	4.7mmD	\$30.00
3057-26	5.7mmD	\$30.00
3065-26	6.5mmD	\$30.00



Straight Abutment Analogs

Includes Castable Coping

Code	Abutment Width	Price
8537	3.7mmD	\$35.00
3047	4.7mmD	\$35.00
3057	5.7mmD	\$35.00
3065	6.5mmD	\$35.00



Straight Abutment Castable Coping

Code	Abutment Width	Price (includes two pieces)
3037-28	3.7mmD	\$30.00
3047-28	4.7mmD	\$30.00
3057-28	5.7mmD	\$30.00
3065-28	6.5mmD	\$30.00



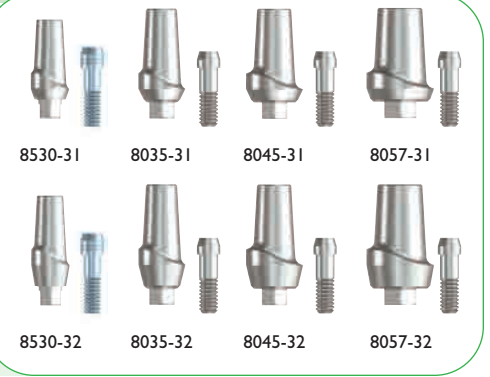


Straight and Angled Contoured Abutments and HLA Abutments

Straight I & 2mm Contoured Abutments

Price includes Fixation Screw with 1.25mmD Hex

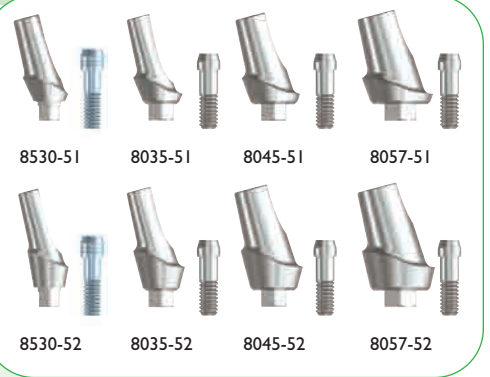
Code	Platform	Collar Heights	Replacement Screw	Price
8530-31	3.0mmD	1mm	1000-04	\$85.00
8530-32	3.0mmD	2mm	1000-04	\$85.00
8035-31	3.5mmD	1mm	1000-01	\$85.00
8035-32	3.5mmD	2mm	1000-01	\$85.00
8045-31	4.5mmD	1mm	1000-01	\$85.00
8045-32	4.5mmD	2mm	1000-01	\$85.00
8057-31	5.7mmD	1mm	1000-01	\$85.00
8057-32	5.7mmD	2mm	1000-01	\$85.00



Angled I & 2mm Contoured Abutments

Price includes Fixation Screw with 1.25mmD Hex

Code	Platform	Collar Heights	Replacement Screw	Price
8530-51	3.0mmD	.75mm	1000-04	\$85.00
8530-52	3.0mmD	2mm	1000-04	\$85.00
8035-51	3.5mmD	.75mm	1000-01	\$85.00
8035-52	3.5mmD	2mm	1000-01	\$85.00
8045-51	4.5mmD	.75mm	1000-01	\$85.00
8045-52	4.5mmD	2mm	1000-01	\$85.00
8057-51	5.7mmD	.75mm	1000-01	\$85.00
8057-52	5.7mmD	2mm	1000-01	\$85.00



Straight Full-Contoured (HLA) Abutments

Price includes Fixation Screw with 1.25mmD Hex

Code	Platform	Collar Heights	Replacement Screw	Price
HLA3-4	3.5mmD	0mm	1000-01	\$75.00
HLA3-5	3.5mmD	0mm	1000-01	\$75.00
HLA4-5	4.5mmD	0mm	1000-01	\$75.00
HLA4-6	4.5mmD	0mm	1000-01	\$75.00
HLA5-6	5.7mmD	0mm	1000-01	\$75.00
HLA5-7	5.7mmD	0mm	1000-01	\$75.00



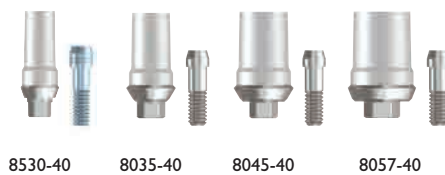


Gold, Plastic and Titanium Engaging and Non-Engaging Abutments

Gold Engaging Cast-to Abutments

Price includes Fixation Screw with 1.25mmD Hex

Code	Platform	Collar Heights	Replacement Screw	Price
8530-40	3.0mmD	1.0mm	1000-04	\$100.00
8035-40	3.5mmD	1.0mm	1000-01	\$100.00
8045-40	4.5mmD	1.0mm	1000-01	\$100.00
8057-40	5.7mmD	1.0mm	1000-01	\$125.00



Gold Non-Engaging Cast-to Abutments

Price includes Fixation Screw with 1.25mmD Hex

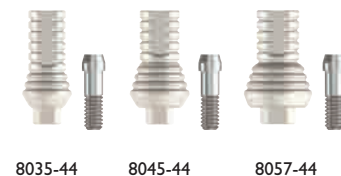
Code	Platform	Collar Heights	Replacement Screw	Price
8530-41	3.0mmD	1.0mm	1000-04	\$100.00
8035-41	3.5mmD	1.0mm	1000-01	\$100.00
8045-41	4.5mmD	1.0mm	1000-01	\$100.00



Plastic Engaging Castable Abutments

Price includes Fixation Screw with 1.25mmD Hex

Code	Platform	Collar Heights	Replacement Screw	Price
8035-44	3.5mmD	0mm	1000-01	\$35.00
8045-44	4.5mmD	0mm	1000-01	\$35.00
8057-44	5.7mmD	0mm	1000-01	\$35.00



Plastic Non-Engaging Castable Abutments

Price includes Fixation Screw with 1.25mmD Hex

Code	Platform	Collar Heights	Replacement Screw	Price
8530-46	3.0mmD	0mm	1000-04	\$30.00
8035-46	3.5mmD	0mm	1000-01	\$30.00
8045-46	4.5mmD	0mm	1000-01	\$30.00
8057-46	5.7mmD	0mm	1000-01	\$30.00



Plastic Engaging Temporary Abutments

Price includes Fixation Screw with 1.25mmD Hex

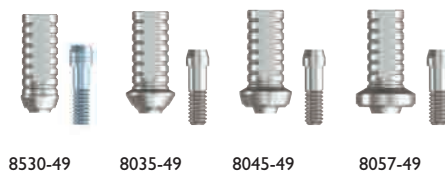
Code	Platform	Collar Heights	Replacement Screw	Price
8530-47	3.0mmD	1.0mm	1000-09	\$35.00
8035-47	3.5mmD	1.0mm	1000-06	\$35.00
8045-47	4.5mmD	1.0mm	1000-06	\$35.00
8057-47	5.7mmD	1.0mm	1000-06	\$35.00



Titanium Non-Engaging Temporary Abutments

Price includes Fixation Screw with 1.25mmD Hex

Code	Platform	Collar Heights	Replacement Screw	Price
8530-49	3.0mmD	1.0mm	1000-04	\$35.00
8035-49	3.5mmD	1.0mm	1000-01	\$35.00
8045-49	4.5mmD	1.0mm	1000-01	\$35.00
8057-49	5.7mmD	1.0mm	1000-01	\$35.00





Selection Chart: Overdenture & Screw-Retained Restorations

	3.0mmD Platform	3.5mmD Platform	4.5mmD Platform	5.7mmD Platform						
Overdenture Abutments (*Includes Transfer and Comfort Cap)										
Overdenture Abutments	 8530-61 8530-62 8530-64	 8035-61 8035-62 8035-64 8035-64-15 8035-64-30	 8045-61 8045-62 8045-64 8045-64-15 8045-64-30	 8057-61 8057-62 8057-64						
Overdenture Abutment Transfer, Analog & Comfort Cap										
OD Abutment Comfort Cap Transfer and Analog	 *4000-13	 *1000-68	 1000-61	 1000-62						
			Open-Tray Transfer	Closed-Tray Transfer						
Overdenture Copings										
Overdenture Abutment Components	 1000-64 Gold	 1000-65 Titanium	 1000-66 Plastic	 1000-67 Gold/Plastic	 1000-69 Titanium					
Ball Abutments (**Includes Transfer and Comfort Cap)										
Ball Abutments	 1000-70 Ball Top Screw to form 15° & 30° Angled Ball Abutments	 8035-72 8035-74	 8045-72 8045-74	 8057-72 8057-74						
Ball Attachments										
Ball Abutment Components	 **1000-87	 **1000-84	 1000-85	 1000-81	 1000-82	 1000-88	 1000-83	 1000-86		
Locator® Abutments										
Locator® Abutments		 8035-90 8035-91 8035-92 8035-93 8035-94	 8045-90 8045-91 8045-92 8045-93 8045-94	 8057-91 8057-92 8057-93 8057-94						
Locator® Attachments										
Locator® Abutment Components	 1000-94	 1000-95	 1000-92B	 1000-92G	 1000-92C	 1000-92P	 1000-92R	 1000-98	 1000-93	 1000-96

Abutments are compatible with Zimmer, BioHorizon (internal) and MIS Implants with 3.5mm, 4.5mmD and 5.7mmD prosthetic platforms

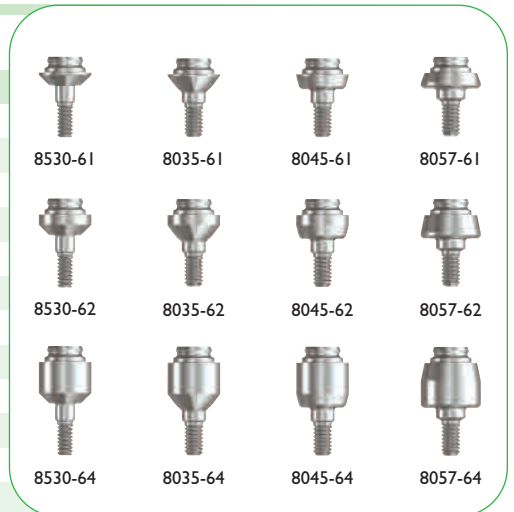


Abutments for Ball, Bar & Locator® Overdentures

Overdenture Abutments

Includes Transfer & Comfort Cap - requires 1.25mmD Hex Tool

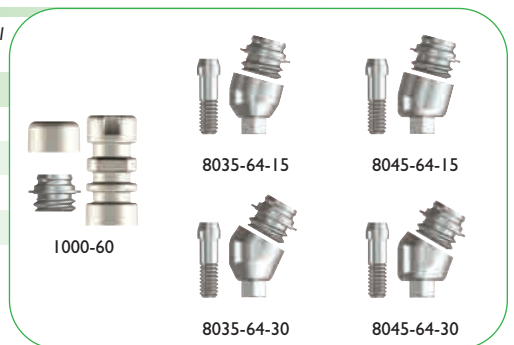
Code	Platform	Collar Heights	Price
8530-61	3.0mmD	1mm	\$85.00
8530-62	3.0mmD	2mm	\$85.00
8530-64	3.0mmD	4mm	\$85.00
8035-61	3.5mmD	1mm	\$85.00
8035-62	3.5mmD	2mm	\$85.00
8035-64	3.5mmD	4mm	\$85.00
8045-61	4.5mmD	1mm	\$85.00
8045-62	4.5mmD	2mm	\$85.00
8045-64	4.5mmD	4mm	\$85.00
8057-61	5.7mmD	1mm	\$85.00
8057-62	5.7mmD	2mm	\$85.00
8057-64	5.7mmD	4mm	\$85.00



Angled Overdenture Abutments

Includes Transfer & Comfort Cap - requires 1.25mmD & 2.5mmD Hex Tool

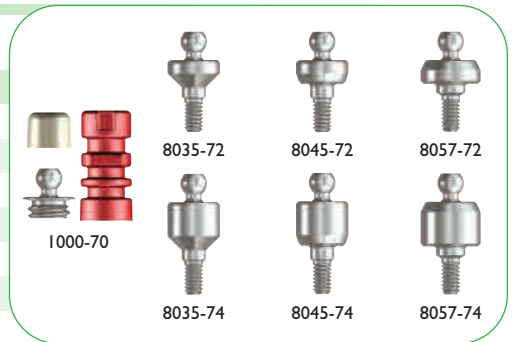
Code	Platform	Description	Price
8035-64-15	3.5mmD	15° Angled Abutment	\$100.00
8045-64-15	4.5mmD	15° Angled Abutment	\$100.00
8035-64-30	3.5mmD	30° Angled Abutment	\$100.00
8045-64-30	4.5mmD	30° Angled Abutment	\$100.00
1000-60	Replacement Screw Top for Angled Base		\$35.00



Ball Abutments

Includes Transfer & Comfort Cap - requires 1.25mmD Hex Tool

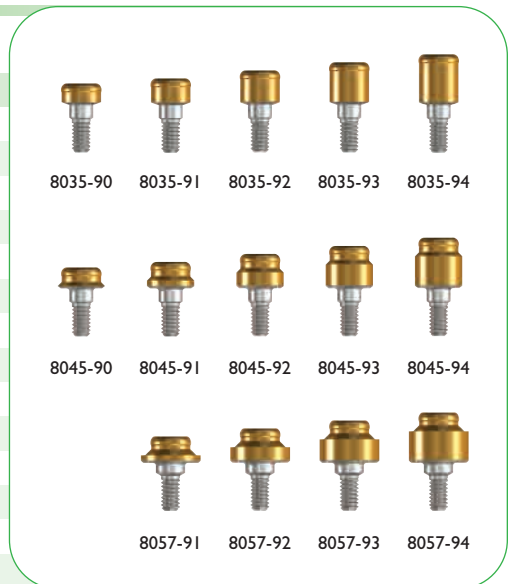
Code	Platform	Collar Heights	Price
8035-72	3.5mmD	2mm	\$85.00
8035-74	3.5mmD	4mm	\$85.00
8045-72	4.5mmD	2mm	\$85.00
8045-74	4.5mmD	4mm	\$85.00
8057-72	5.7mmD	2mm	\$85.00
8057-74	5.7mmD	4mm	\$85.00
1000-70	Replacement Ball Top for Angled Base		\$35.00



Locator® Abutments

Requires purchase of Abutment Processing Cap/Male Kit [1000-98]

Code	Platform	Collar Heights	Price
8035-90	3.5mmD	0mm	\$110.00
8035-91	3.5mmD	1mm	\$110.00
8035-92	3.5mmD	2mm	\$110.00
8035-93	3.5mmD	3mm	\$110.00
8035-94	3.5mmD	4mm	\$110.00
8045-90	4.5mmD	0mm	\$110.00
8045-91	4.5mmD	1mm	\$110.00
8045-92	4.5mmD	2mm	\$110.00
8045-93	4.5mmD	3mm	\$110.00
8045-94	4.5mmD	4mm	\$110.00
8057-91	5.7mmD	1mm	\$110.00
8057-92	5.7mmD	2mm	\$110.00
8057-93	5.7mmD	3mm	\$110.00
8057-94	5.7mmD	4mm	\$110.00

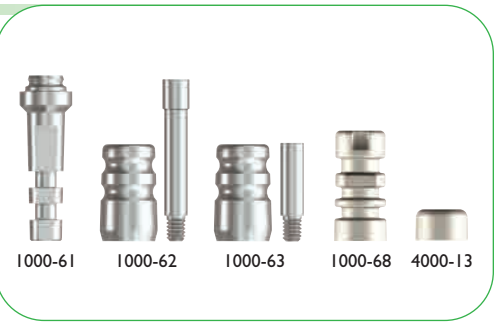




Ancillary Components for Overdenture & Screw-Retained Restorations

Overdenture Abutment Comfort Cap, Transfers & Analog Screws require 1.25mmD Hex Tool

Code	Prosthetic Platform	Description	Price
1000-61	5.0mmD	Aluminum Analog	\$20.00
1000-62	5.0mmD	Open-Tray Transfer plus Fixation Screw	\$30.00
1000-63	5.0mmD	Closed-Tray Transfer plus Fixation Screw	\$30.00
1000-68	5.0mmD	Plastic Abutment Transfer - 2ea	\$30.00
4000-13	5.0mmD	Plastic Comfort Cap - 2ea	\$30.00
1000-14	-	Replacement Open-Tray Fixation Screw - 2ea	\$30.00
1000-15	-	Replacement Closed-Tray Fixation Screw - 2ea	\$30.00



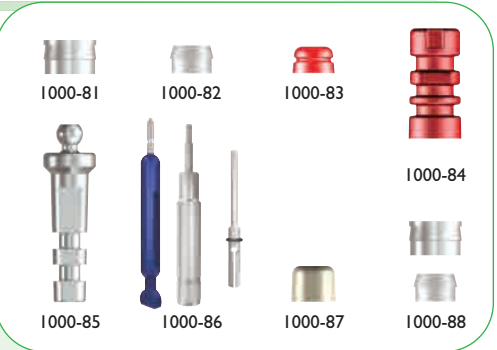
Overdenture Abutment Components Price includes Fixation Screw [1000-05] with 1.25mmD Hex

Code	Prosthetic Platform	Description	Price
1000-05	-	Coping Replacement Fixation Screw - 2ea	\$30.00
1000-64	5.0mmD	Gold Coping	\$80.00
1000-65	5.0mmD	Titanium Coping	\$40.00
1000-66	5.0mmD	Plastic Coping	\$35.00
1000-67	5.0mmD	Gold & Plastic Coping	\$80.00
1000-69	5.0mmD	Titanium Temporary Coping	\$35.00



Ball Abutment Components

Code	Description	Price
1000-81	Ball Abutment Housing - 2ea	\$30.00
1000-82	Nylon Liner - 2ea	\$15.00
1000-83	Nylon Liner Transfer - 2ea	\$15.00
1000-84	Ball Abutment Transfer - 2ea	\$30.00
1000-85	Ball Abutment Analog	\$20.00
1000-86	Ball Abutment Tools	\$65.00
1000-87	Ball Abutment Comfort Cap - 2ea	\$30.00
1000-88	Ball Abutment Housing & Nylon Liner	\$22.00



Locator® Abutment Transfer, Analogs and Alignment Tools

Code	Description	Price
1000-94	Locator® Impression Coping - 2ea	\$32.00
1000-95	Locator® Abutment Analog 4mmD - 2ea	\$32.00
1000-95W	Locator® Abutment Analog 5mmD - 2ea	\$32.00
1000-97	Locator® Abutment Parallel Post - 4ea	\$16.00
1000-10	Guide Screw for Legacy (excluding 3.0mmD platform) - 2ea	\$30.00
1000-99	Locator® Abutment Angle Measure Guide	\$21.00



Locator® Abutment Components

Code	Retention Force	Description	Price
1000-92C	5.0lbs	Replacement Male Clear - 4ea	\$21.00
1000-92P	3.0lbs	Light Replacement Male Pink - 4ea	\$21.00
1000-92B	1.5lbs	Extra Light Replacement Male Blue - 4ea	\$21.00
1000-92G	4.0lbs	Extended Range Male Green - 4ea	\$21.00
1000-92R	1.0lb	Extra Light Extended Range Male Red - 4ea	\$21.00
1000-93	-	Black Processing Male - 4ea	\$21.00
1000-98	Assorted	Abutment Processing Cap/Male Kit - 2ea	\$58.00



Locator® Instrumentation

Code	Description	Price
LDT	Locator® Abutment Driver Tool - Long	\$44.00
LDTs	Locator® Abutment Driver Tool - Short	\$44.00
LDD	Locator® Abutment Driver Drill - Long	\$44.00
LDdS	Locator® Abutment Driver Drill - Short	\$44.00
1000-96	Core Tool - Male Removal & Seating Tool and Abutment Driver	\$75.00



Tapered Hex Tools

Code	Description	Price
THT1.25	1.25mmD Tapered Hex Tool Long	\$40.00
THT1.25S	1.25mmD Tapered Hex Tool Short	\$40.00



THT1.25



THT1.25S

Straight Tools

Square connection for use with Ratchet or Torque Wrench

Code	Description	Price
HT1.25	1.25mmD Straight Hex Tool Long	\$40.00
HT1.25S	1.25mmD Straight Hex Tool Short	\$40.00
HT2.5	2.5mmD Hex Tool Long (with retentive O-ring)	\$40.00
HT2.5S	2.5mmD Hex Tool Short (with retentive O-ring)	\$40.00



HT1.25



HT2.5



HT1.25S



HT2.5S

Hex Drills

Latch head connection for use with Surgical Motor

Code	Description	Price
HD1.25	1.25mmD Hex Drill	\$40.00
HD2.5	2.5mmD Hex Drill (with retentive O-ring)	\$40.00



HD1.25



HD2.5

Ancillary Instruments

Code	Description	Price
TW30	30Ncm Torque Wrench	\$125.00
TW35	35Ncm Torque Wrench	\$125.00
DE	Drill Extender	\$40.00
TWM	Multi-Setting Torque Wrench (15, 20, 25, 30, 35, 40, 45, 50 & 60Ncm)	\$395.00
ABH	Analog Holder	\$85.00



TW30



TW35



DE



TWM



ABH



Implant Direct™

simply smarter.

27030 Malibu Hills Road,
Calabasas Hills, CA 91301
Phone: 1-818-444-3333

www.implantdirect.com

Legacy™ 3's All-in-1 Packaging

INCLUDES: Cover Screw, Healing Collar, Transfer & Straight Preparable Abutment Surgically and Prosthetically Compatible with Zimmer's Tapered Screw-Vent®

Legacy3 USA price = \$175

*Tapered Screw-Vent USA price = \$563

* Includes similar components provided with Legacy3 Implant



"Order Online for High Quality Products at factory-direct prices"



Gerald Niznick, DMD,MSD, Founder and President of Implant Direct

Three Implant Designs and Packaging Options

Original Conical Connection (GNiznick US Pat.#4,960,381)

Selection As Simple as 1-2-3

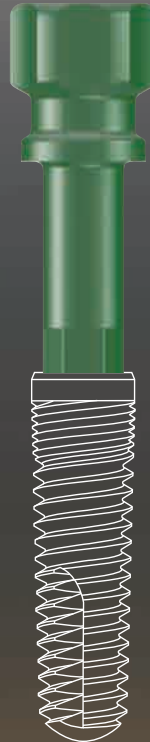
Select Implant based on Price, Packaging and Thread Design

Legacy1: \$125 includes Healing Collar

Legacy2: \$150 includes Healing Collar & Transfer

Legacy3: \$175 includes Healing Collar, Transfer & Abutment

Legacy1
"V" Threads
3 Diameter Options
Plastic Carrier



Legacy2
Spiral Threads
4 Diameter Options
Ti. Transfer Carrier



Legacy3
Buttress Threads
6 Diameter Options
Ti. Abutment Carrier



Prosthetic compatibility with Screw-Vent, BioHorizons® and MIS Implants

INTRODUCTORY LEGACY OFFER

Try a 13mmL Legacy1, Legacy2 and Legacy3 Implant at no charge with purchase of required instruments

US List Price for 3 Implants, Abutments and Prosthetic Components

Legacy = \$620

Zimmer Dental = \$1859



Compare US List Price	Straight Contoured	HLA Abutment	15° Angled Contoured	Straight Snap-On	Gold/Plastic	Titanium Temporary Abutment	Plastic Temporary Abutment	Ball Attachment	Locator® Abutment	Multiple-Unit w / Cap & Transfer Straight	Multiple-Unit w / Cap & Transfer Angled
Implant Direct	\$85	\$75	\$85	\$85	\$100	\$35	\$35	\$107	\$110	\$85	\$100
Zimmer Dental	\$150	\$150	\$191	\$185	\$182	\$40	\$49	\$172	\$110	\$180	N/A
Cost Savings	43%	50%	55%	54%	45%	13%	29%	38%	0%	53%	N/A

FREE Introductory Offers at
www.implantdirect.com

Terms and Conditions Apply

List prices as of 7/20/09

02-10-0041 Pros